

ABM/ABX

Multi-stage vacuum generator



Features

- Compact volume, tight structure, easy installation, and direct connection with suction cups.
- Multi-stage vacuum generator providing higher vacuum flow with lower energy consumption.
- Suitable for use in environments filled with harmful gases.
- For applications in acidic or alkaline environments, fluororubber sealing accessories should be selected.

Performance Overview

- Standard supply air pressure: 4.5~6 bar.
- Exhaust noise: 50~68 dB(A).
- Compact and easy installation of the product.
- Maximum vacuum level: -92 kPa.

Order Code

ABM 05 - A - V - □

① ② ③ ④ ⑤

① Model	② Specifications	③ Air supply port, vacuum port, and exhaust port connection specifications
ABM-Universal Type (-85kPa)	05	A - Φ6 air tube joint + G1/8 internal thread + built-in muffler
ABX-High Vacuum Type (-92kPa)	10 20 30	B - G1/8 internal thread + G3/8 internal thread + built-in muffler C - G1/8 internal thread + G3/8 internal thread + external muffler
④ Sealing Material	⑤ Control Device	
Blank - Default specification, Nitrile rubber V - Fluororubber (Sulfuric acid environment)	Blank - No valve RE - RE air supply valve	

Performance Parameters

■ ABM05~30

Model	Supply Air Pressure bar	Maximum Vacuum Level (-kPa)	Maximum Vacuum Flow Rate (NL/min)	Air Consumption (NL/min)	Recommended Pipe Diameter [Ømm]	
					Air Supply Port	Vacuum Port
ABM05	4.5~6	85	36~38	12~18	6	8
ABM10	4.5~6	85	70~74	24~41	6	10
ABM20	4.5~6	85	140~148	54~85	8	12
ABM30	5~6	85	175~220	86~125	8	12

Vacuum Flow Rate (NL/min) at Different Vacuum Levels (-kPa)

Model	Supply Air Pressure(bar)	Air Consumption (NL/min)	Maximum Vacuum Level (-kPa)										Maximum Vacuum Level (-kPa)
			0	10	20	30	40	50	60	70	80	90	
ABM05	4.5	12	36	17.5	13	11	10	8	5	2.5	0.8	-	85
ABM10	4.5	24	70	42	27	23	20	16	11	5	1.3	-	85
ABM20	4.5	54	140	72	50	44	38	32	20	11	3	-	85
ABM30	5	86	175	106	82	72	58	44	32	16	5	-	85
ABM05	5	18	38	26	16	14	10	8	6	2.4	0.66	-	85
ABM10	6	41	74	52	31	28	20	16	12	4.8	1.32	-	85
ABM20	6	85	148	99	62	54	40	32	22	10.5	2.7	-	85
ABM30	6	125	220	147	92	73	60	47	32	16	4.1	-	85

Evacuation Time (NL/min) at Different Vacuum Levels (-kPa)

Model	Supply Air Pressure(bar)	Air Consumption (NL/min)	Maximum Vacuum Level (-kPa)										Maximum Vacuum Level (-kPa)
			0	10	20	30	40	50	60	70	80	90	
ABM05	4.5	12	-	0.11	0.42	0.95	1.66	2.5	3.65	5.25	7.89	-	85
ABM10	4.5	24	-	0.08	0.2	0.44	0.8	1.24	1.8	2.55	3.8	-	85
ABM20	4.5	54	-	0.04	0.12	0.23	0.41	0.65	0.93	1.33	2.03	-	85
ABM30	5	86	-	0.03	0.09	0.16	0.27	0.43	0.66	0.95	1.43	-	85
ABM05	6	18	-	0.22	0.55	1	1.58	2.35	3.44	5.27	10.21	-	85
ABM10	6	41	-	0.11	0.28	0.5	0.8	1.18	1.72	2.63	5.16	-	85
ABM20	6	85	-	0.05	0.14	0.25	0.4	0.59	0.86	1.31	2.58	-	85
ABM30	6	125	-	0.04	0.01	0.186	0.44	0.44	0.65	0.9	1.9	-	85

■ ABX05~30

Model	Supply Air Pressure bar	Maximum Vacuum Level (-kPa)	Maximum Vacuum Flow Rate (NL/min)	Air Consumption (NL/min)	Recommended Pipe Diameter [Ømm]	
					Air Supply Port	Vacuum Port
ABX05	4.5~6	92	30~32	18~21	6	8
ABX10	4.5~6	92	52~62	20~40	6	10
ABX20	4.5~6	92	100~124	79~88	8	12
ABX30	5~6	92	180~185	125~137	8	12

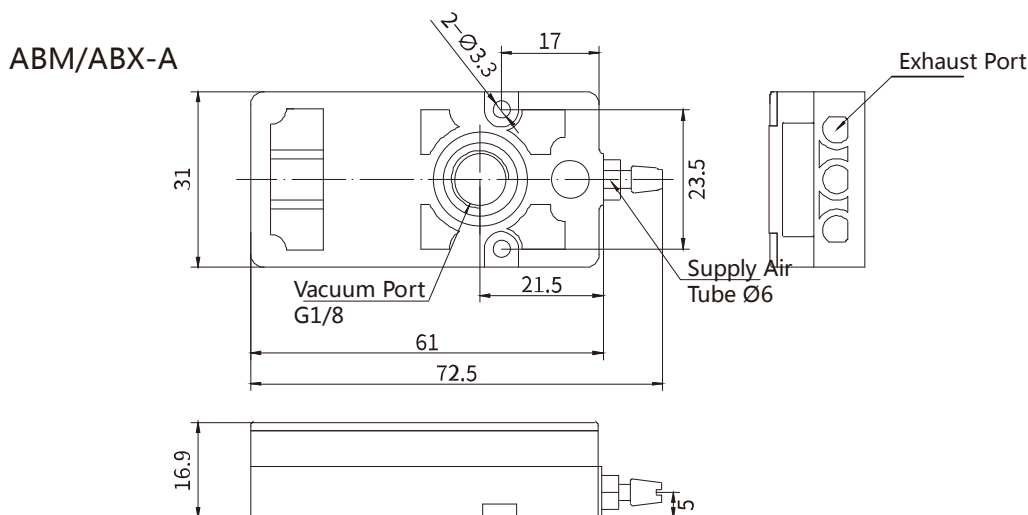
Vacuum Flow Rate (NL/min) at Different Vacuum Levels (-kPa)

Model	Supply Air Pressure(bar)	Air Consumption (NL/min)	0	10	20	30	40	50	60	70	80	90	Maximum Vacuum Level (-kPa)
ABX05	4.5	18	30	15.5	10	9	9	6.5	5.5	3	1.5	0.5	92
ABX10	4.5	20	52	31	20	18	17	13	11	7	2.5	1.5	92
ABX20	4.5	79	100	62	38	32	30	22	14	12	8	3	92
ABX30	5	125	180	74	60	52	46	38	26	19	8	6	92
ABX05	6	21	32	18	9	8	7	6	5	3	1.2	0.45	92
ABX10	6	40	62	36	18	16	14	11	9	6	2.4	0.9	92
ABX20	6	88	124	72	35	32	27	22	18	12	4.8	1.8	92
ABX30	6	137	185	108	52	47	41	33	26	18	7.2	2.7	92

Evacuation Time (NL/min) at Different Vacuum Levels (-kPa)

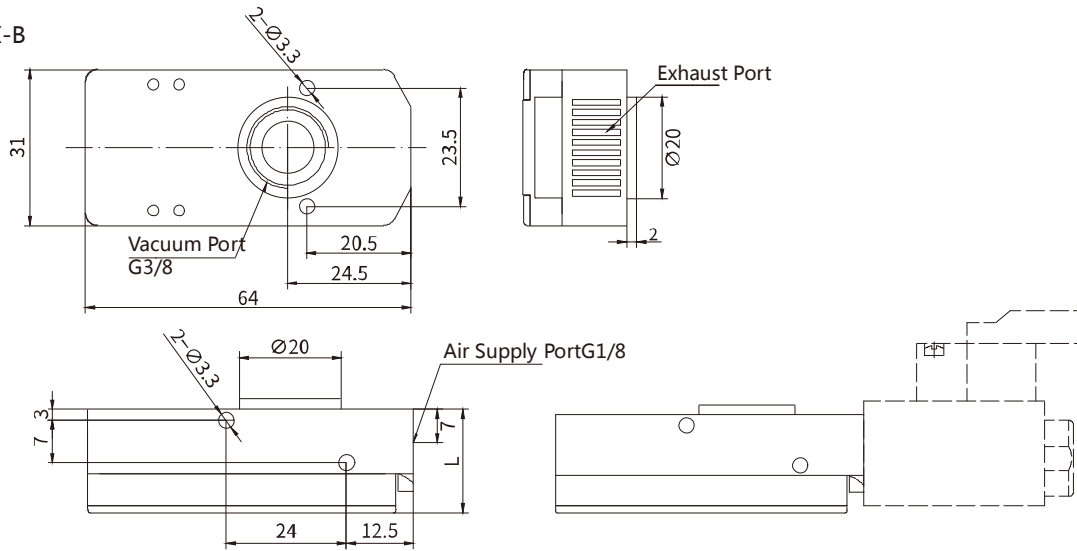
Model	Supply Air Pressure(bar)	Air Consumption (NL/min)	0	10	20	30	40	50	60	70	80	90	Maximum Vacuum Level (-kPa)
ABX05		18	-	0.13	0.6	1.26	2.3	3.2	4.5	6.15	8.5	15.5	92
ABX10	4.5	20	-	0.11	0.3	0.65	1.1	1.55	2.15	2.85	4.7	10.2	92
ABX20		79	-	0.09	0.16	0.32	0.55	0.8	1.5	1.8	2.7	5	92
ABX30	5	125	-	0.06	0.12	0.23	0.36	0.53	0.76	1.1	1.6	2.9	92
ABX05	6	21	-	0.26	0.8	1.16	2.4	3.56	4.9	6.9	10.16	19.2	92
ABX10	6	40	-	0.13	0.4	0.76	1.2	1.78	2.45	3.44	5.08	9.6	92
ABX20	6	88	-	0.06	0.2	0.38	0.6	0.89	1.23	1.72	2.54	4.8	92
ABX30	6	137	-	0.05	0.15	0.28	0.44	0.67	0.92	1.3	1.9	3.6	92

Dimensions



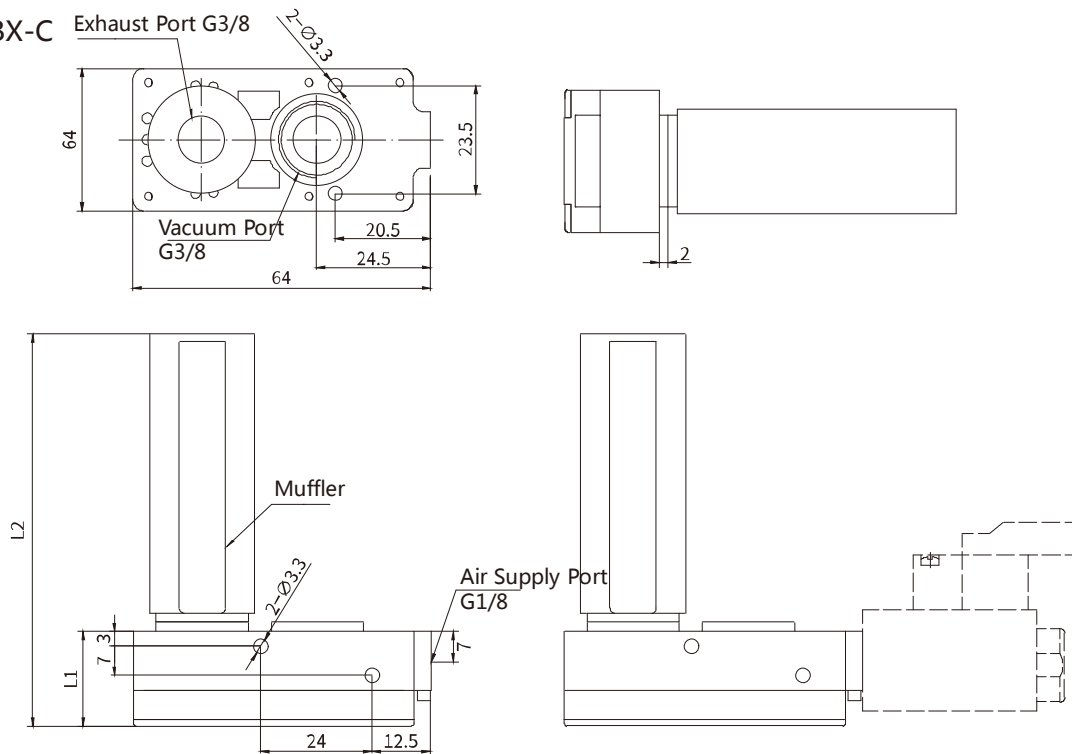
Model	Specifications	Connection Plate Material	Connection Plate Specifications	Air Supply Port Specifications	Vacuum Port Specifications	Weight (g)
ABM	05	PA66	A	Ø6	G1/8	36
ABX	10	PA66		Ø6		35.5

ABM/ABX-B



Model	Specifications	Connection Plate Material	Connection Plate Specifications	Air Supply Port Specifications	Vacuum Port Specifications	L	Weight (g)
ABM ABX	05	PA66	B	G1/8	G3/8	20.7	39.5
	10	PA66				20.7	39
	20	PA66				28	50
	30	PA66				35	63

ABM/ABX-C



Model	Specifications	Connection Plate Material	Connection Plate Specifications	Air Supply Port Specifications	Vacuum Port Specifications	L1	L2	Weight (g)
ABM ABX	05	PA66	C	G1/8	G3/8	20.7	87	55
	10	PA66				20.7	87	54.5
	20	PA66				28	94.2	67
	30	PA66				35	101.5	81