



## AD2 series Mini Air Gripper



### Feature

- Stainless steel fingers
- The gripping available for 2 mm hole
- Single acting, normally open, normally close in option

### Specification

Item	Bore size (mm)	Ø08		Ø11	
		Single acting normally open: P	Single acting normally closed: C	Single acting normally open: P	Single acting normally closed: C
Fluid		Air			
Pressure range	kgf / cm <sup>2</sup> (kPa)	2 ~ 7 ( 200 ~ 700 )			
Ambient and fluid temperature	°C	0 ~ 60			
Gripping force	kgf	0.8		2.0	
Gripping action angle	°	-4.5 ~ 10	—	-5.5 ~ 8	—
Available diameter/ Slot size		—	Ø2 ~ Ø10 3 ~ 9	—	Ø6 ~ Ø14 6 ~ 14
Port size	mm	M5 x 0.8P			
Lubrication		Non-lube			

※The gripping force is the force of open and close gripper, the acting pressure is 5 Kgf / cm<sup>2</sup>.

### Product weight

Model	Weight (kg)
AD2 Ø08	0.02
AD2 Ø11	0.04

Note: All of above are theoretical data. Weight tolerance about ±5%



## Code of order

AD2-08-C-1-D2  
① ② ③ ④

①

Mark	Bore size (mm)
08	Ø8
11	Ø11

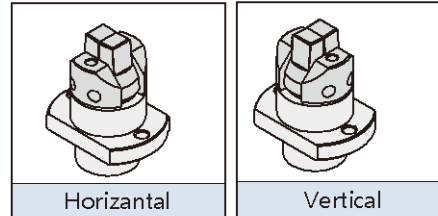
②

Mark	Action
C	Normally closed
P	Normally open

③

Mark	Mounting type
1	Basic
2	Body male thread
3	Thread base (Horizontal)
4	Thread base (Vertical)
5	Square base (Horizontal)
6	Square base (Vertical)
7	Flange base (Horizontal)
8	Flange base (Vertical)

● Image

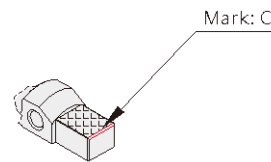
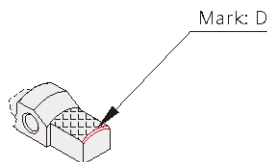


● Note: Horizontal and vertical indicates the direction to the base.

④

Gripper type				
Mark	Type of action	Bore size (mm)	Ø8	Ø11
D2 ↕ D12	C: Normally closed		D2: Ø2 ~ 3	D6: Ø6 ~ 8
			D3: Ø3 ~ 4	D8: Ø8 ~ 10
			D4: Ø4 ~ 6	D10: Ø10 ~ 12
			D6: Ø6 ~ 8	D12: Ø12 ~ 14
			D8: Ø8 ~ 10	—
C3 ↕ C12	C: Normally closed		C3: 3 ~ 5	C6: 6 ~ 8
			C5: 5 ~ 7	C8: 8 ~ 10
			C7: 7 ~ 9	C10: 10 ~ 12
			—	C12: 12 ~ 14
A	P: Normally open		Small finger	
B			Big finger	

### ■ Normal close type - Differentiation of D and C



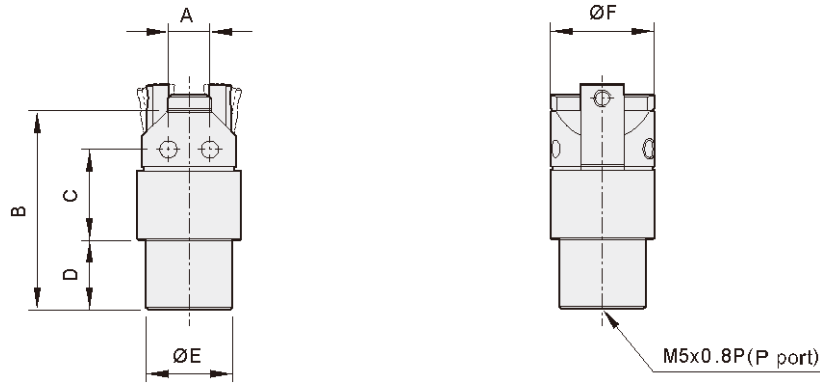
● D: Indicates the gripper finger with arc shape

● C: Indicates the gripper finger with flat shape



## Dimensions

### Basic type

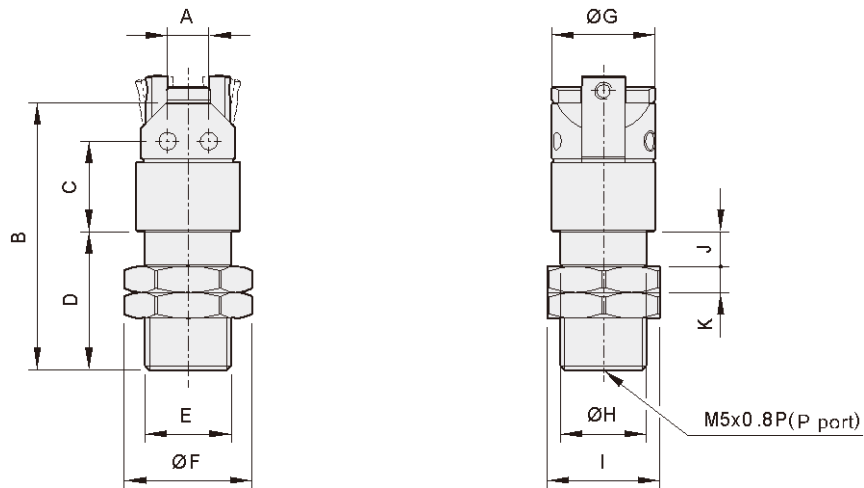


Unit: mm

Model \ Size	A	B	C	D	E	F
AD2 08	4.8	23	10.5	8	10	12
AD2 11	6	26	13	8	13	16

※ Note: Above dimensions refer to grippers.

### Body male thread



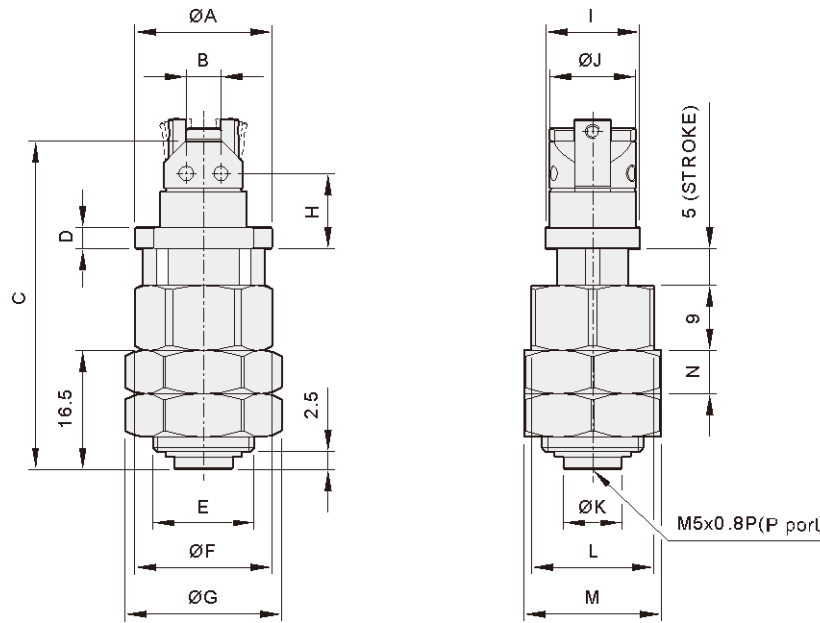
Unit: mm

Model \ Size	A	B	C	D	E	F	G	H	I	J	K
AD2 08	4.8	31	10.5	16	M10 x 1.0P	14.8	12	10	13	4	3
AD2 11	6	35	13	17	M12 x 1.0P	16	16	13	14	5	3

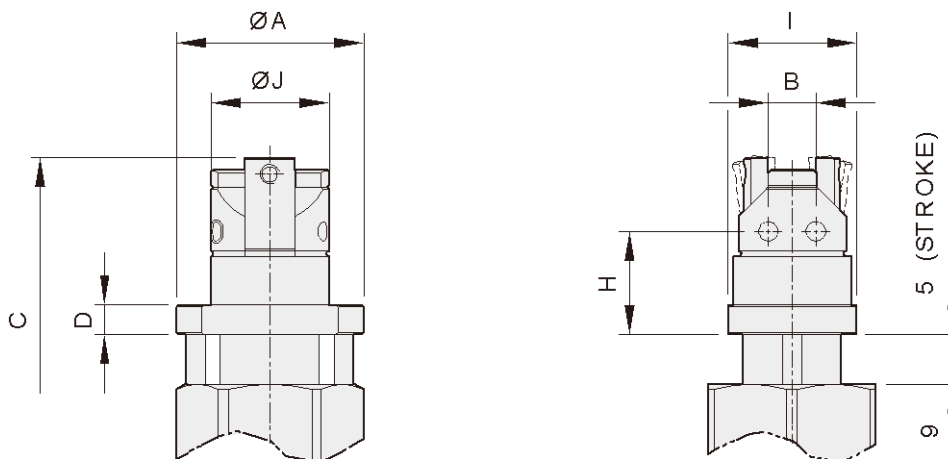
※ Note: Above dimensions refer to grippers.



## Thread base (Horizontal)



## Thread base (Vertical)



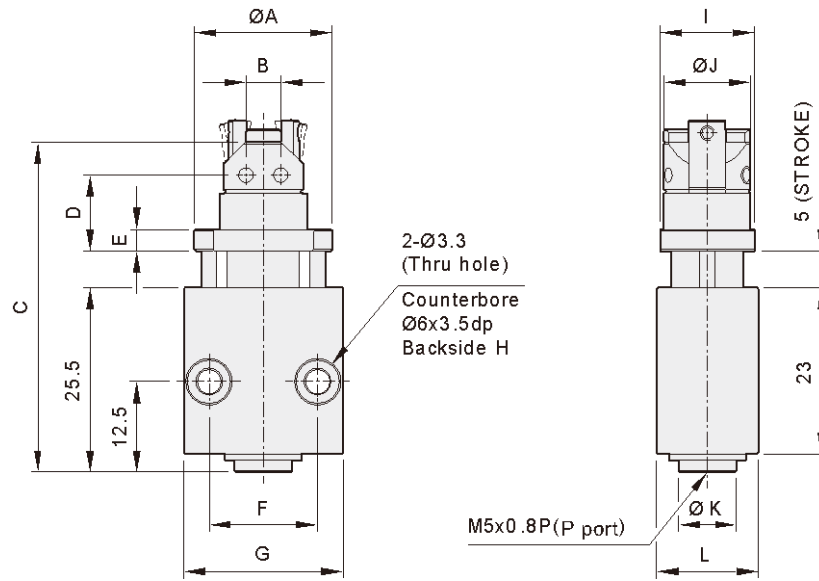
Unit: mm

Model \ Size	A	B	C	D	E	F	G	H	I	J	K	L	M	N
AD2 08	19	4.8	45.5	3	M14 x 1.5P	19	21.7	10.5	13	12	8	17	19	6
AD2 11	24	6	48.5	4	M18 x 1.5P	25	26	13	17	16	10	22	24	5

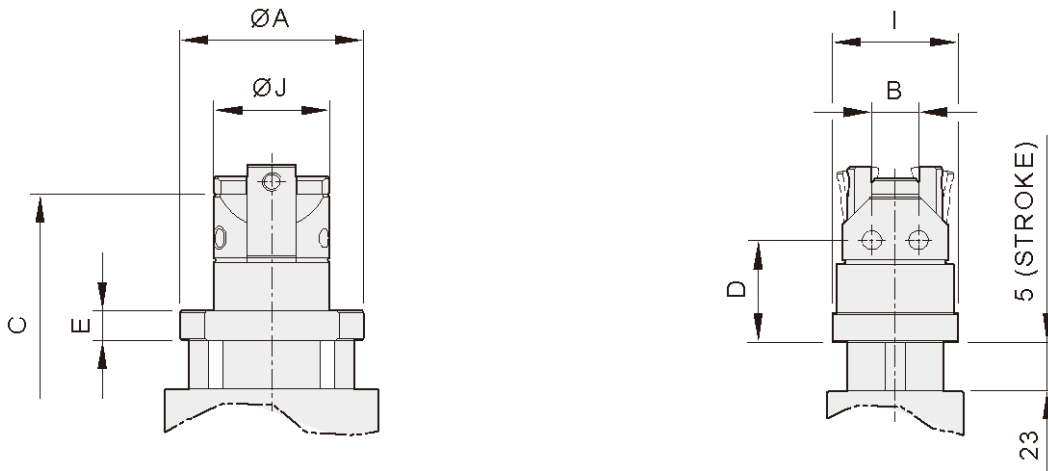
※ Note: Above dimensions refer to grippers.



## ■ Squire base (Horizontal)



## ■ Squire base (Vertical)



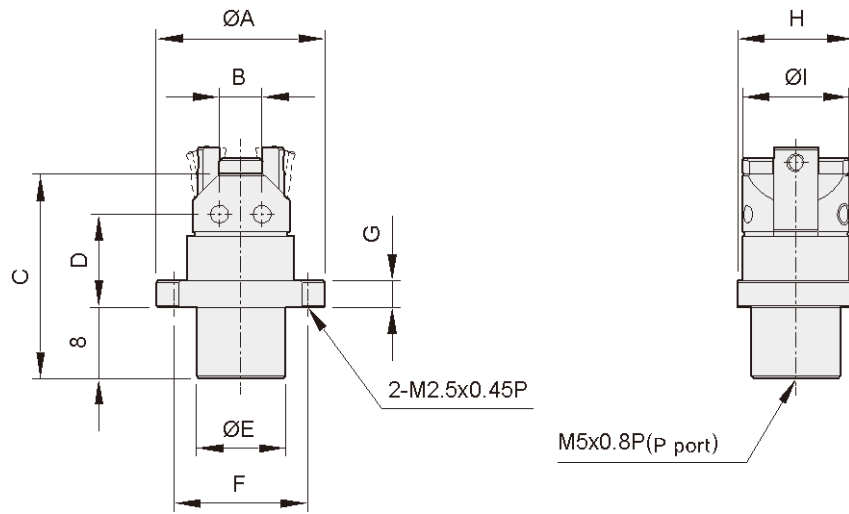
Unit: mm

Model	Size	A	B	C	D	E	F	G	H	I	J	K	L
AD2 08		19	4.8	45.5	10.5	3	15	22	M4x0.7Px7dp	13	12	8	14
AD2 11		24	6	48.5	13	4	18	25	M4x0.7Px9dp	17	16	10	18

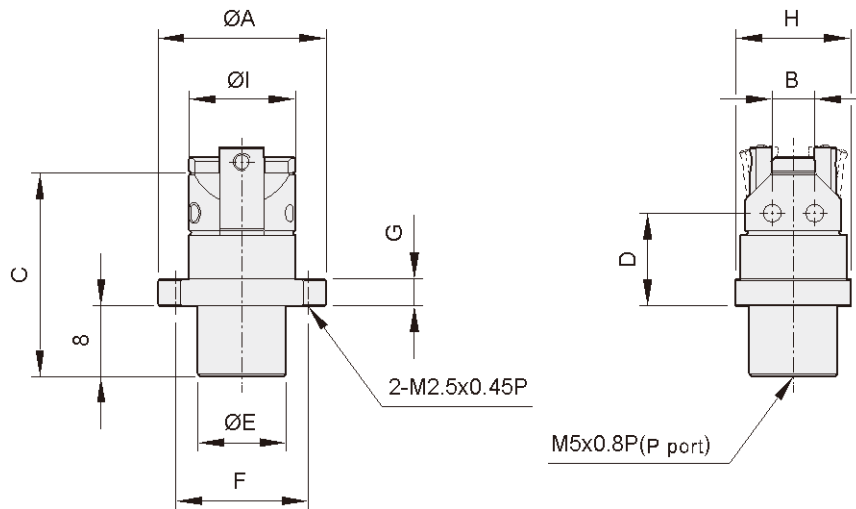
※ Note: Above dimensions refer to grippers.



## ■ Flange base (Horizontal)



## ■ Flange base (Vertical)



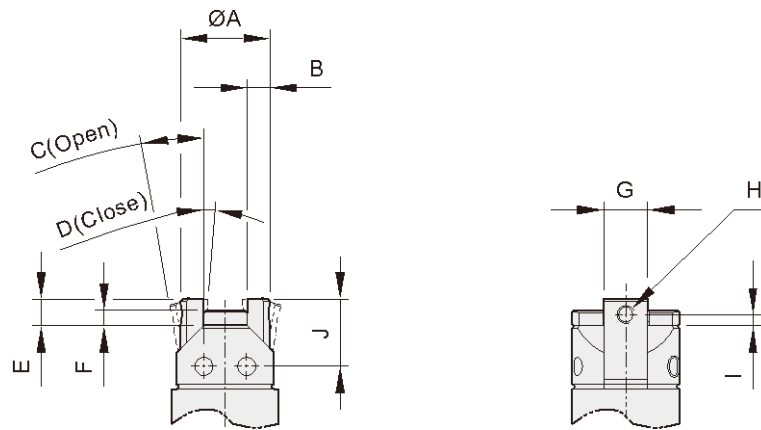
Unit: mm

Model \ Size	A	B	C	D	E	F	G	H	I
AD2 08	19	4.8	23	10.5	10	15	3	13	12
AD2 11	24	6	26	13	13	20	4	17	16

※ Note: Above dimensions refer to grippers.



## Normally open finger dimensions (small finger)

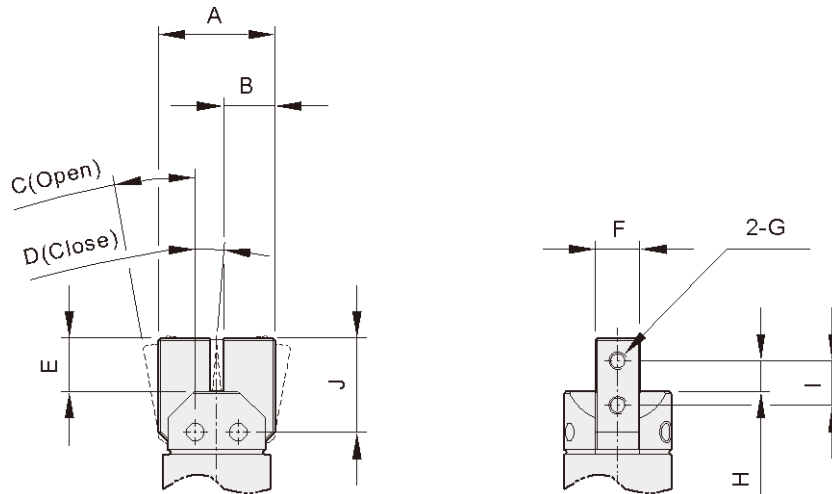


Unit: mm

Model	Size	A	B	C	D	E	F	G	H	I	J
AD2 08		10	2.5	10°	-4.5°	3	1.8	5	M2x0.4P	1.3	7.5
AD2 11		13	3.5	8°	-5.5°	4	1.5	7	M2.5x0.45P	1.5	9

※ Note: Above dimensions refer to grippers.

## Normally open finger dimensions (big finger)



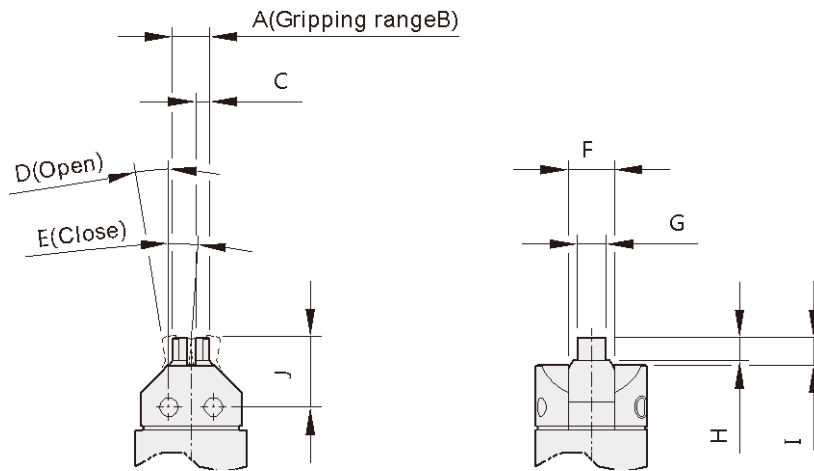
Unit: mm

Model	Size	A	B	C	D	E	F	G	H	I	J
AD2 08		13	5.7	10°	-4.5°	6	5	M2x0.4P	3.5	5	10.5
AD2 11		17	7.5	8°	-4.5°	7.3	7	M2.5x0.45P	4.3	6	12.3

※ Note: Above dimensions refer to grippers.



## Normally closed Finger dimensions



Unit: mm

Model	Size	A	B	C	D	E	F	G	H	I	J
AD2 8	D2	Ø2	Ø2 ~ 3	0.75	5.3°	-2°	5	1.6	1.5	3	7.5
	D3	Ø3	Ø3 ~ 4	1				2	2		
	D4	Ø4	Ø4 ~ 6	1.5	3	2.5					
	D6	Ø6	Ø6 ~ 8	2.5	4	3.5					
	D8	Ø8	Ø8 ~ 10	3.5	4	5					
	C3	3	3 ~ 5	1	3	2.5					
	C5	5	5 ~ 7	2	4	3.5					
	C7	7	7 ~ 9	3	4	5					
AD2 11	D6	Ø6	Ø6 ~ 8	2.2	8°	-4.5°	7	4	4	5	10
	D8	Ø8	Ø8 ~ 10	3.2				6	5		
	D10	Ø10	Ø10 ~ 12	4.2				6	6		
	D12	Ø12	Ø12 ~ 14	5.2				6	6		
	C6	6	6 ~ 8	2.2				6	5		
	C8	8	8 ~ 10	3.2				6	6		
	C10	10	10 ~ 12	4.2				6	6		
	C12	12	12 ~ 14	5.2				6	6		

※ Note: Above dimensions refer to grippers.