

ADM series 180° Angular Type Air Gripper



Feature

- Light weight, compact body, small port size
- 180° opening gripping angle
- Various installation directions

Specification

Item	Bore size (mm)	Ø12	Ø16	Ø20	Ø25	Ø32
Action		Double acting				
Fluid		Air				
Pressure range	kgf / cm ² (kPa)	1.5 ~ 7 (150 ~ 700)				
Ambient and fluid temperature	°C	0 ~ 60				
Max. operation frequency	time/min	60				
Lubrication	Cylinder	Lubrication free type				
	Lever section	Lubrication required				
Theoretical gripping force(M)	Closed side	0.2 X P	0.8 X P	1.7 X P	3.4 X P	6.1 X P
	Opened side	0.5 X P	1.1 X P	2.3 X P	4.3 X P	8.1 X P
Max. gripper point length (L)	mm	40	80	100	120	140
Effective gripping force (F)	kgf	F = M / L X 0.9				
Lever open/close angles	°	- 1 ~ + 180				
Port size		M5 X 0.8P				
Sensing device		With magnet				

Note 1:F: Effective gripping force, M: theoretical gripping torque, P: operating pressure 5kgf/cm², L: the gripping point length is 30mm

Product weight

Model	Weight (kg)
ADM Ø12	0.1
ADM Ø16	0.16
ADM Ø20	0.55
ADM Ø25	0.75
ADM Ø32	1.23

Note: All of above are theoretical data.
Weight tolerance about±5%



Code of order

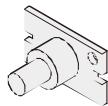
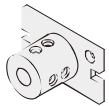
ADM-20-AM-AMS-L-2

① ② ③ ④

①

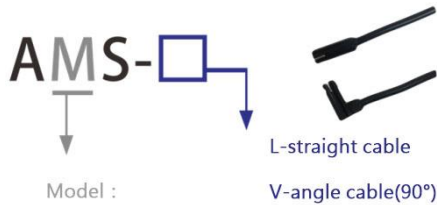
Mark	Bore size(mm)
10	Ø12
16	Ø16
20	Ø20
25	Ø25
32	Ø32

②

Mark	Mouting bracket	Mark	Mouting bracket	Mark	Mouting bracket
None	Without Mouting bracket	AM		AB	

● AM: Internal mounting AB: External mounting

③



Model :

M-2 wire Without contact

N-3 wire Without contact(NPN)

P-3 wire Without contact(PNP)

wire length-L : 2000mm

④

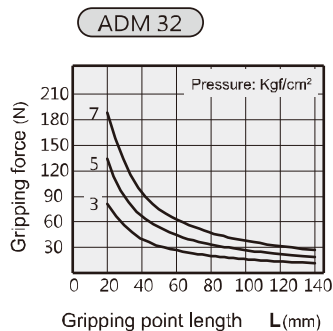
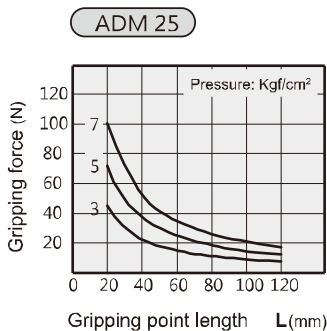
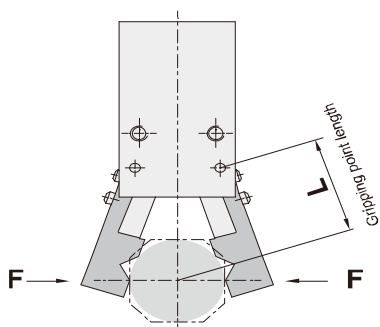
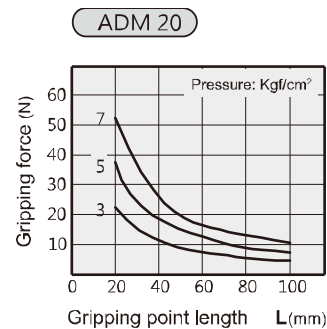
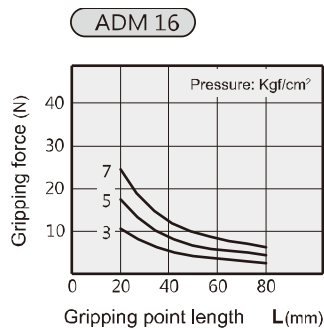
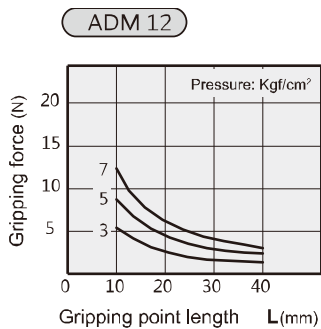
Mark	Sensor quantity
1	With 1 sensor switche
2	With 2 sensor switches

Operating type and data

Model	The smallest operating pressure (kgf/cm ²)	Thread port (mm)	Effective gripping force (N)	
			Open	Close
ADM 12	2.2	4-M3x0.5P	Open	7.3
			Close	2.9
ADM 16	1	4-M3x0.5P	Open	16.1
			Close	11.7
ADM 20	1	4-M4x0.7P	Open	33.8
			Close	24.9
ADM 25	1	4-M5x0.8P	Open	63.2
			Close	49.9
ADM 32	1	4-M6x1.0P	Open	119
			Close	89.6

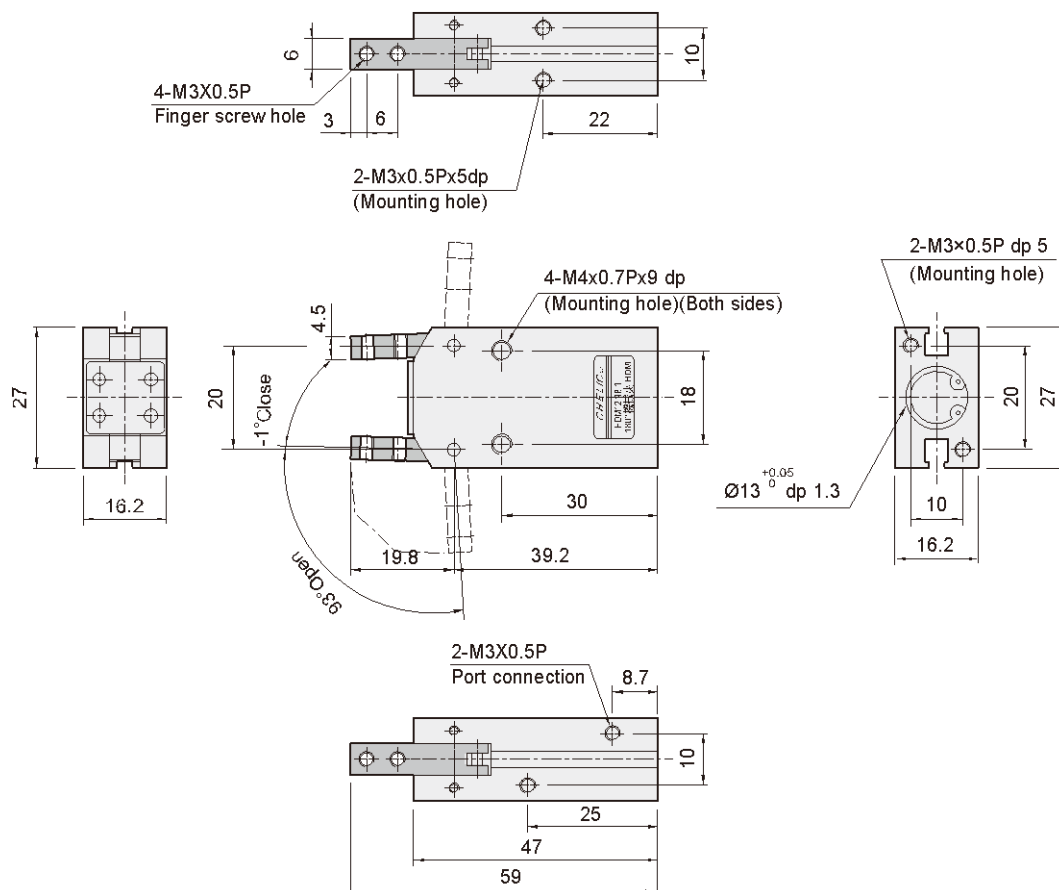
Note: The gripping force is the force of open and close gripper which in the length of gripping point is 30mm and acting pressure is 5 kgf/cm².

Gripping force characteristic



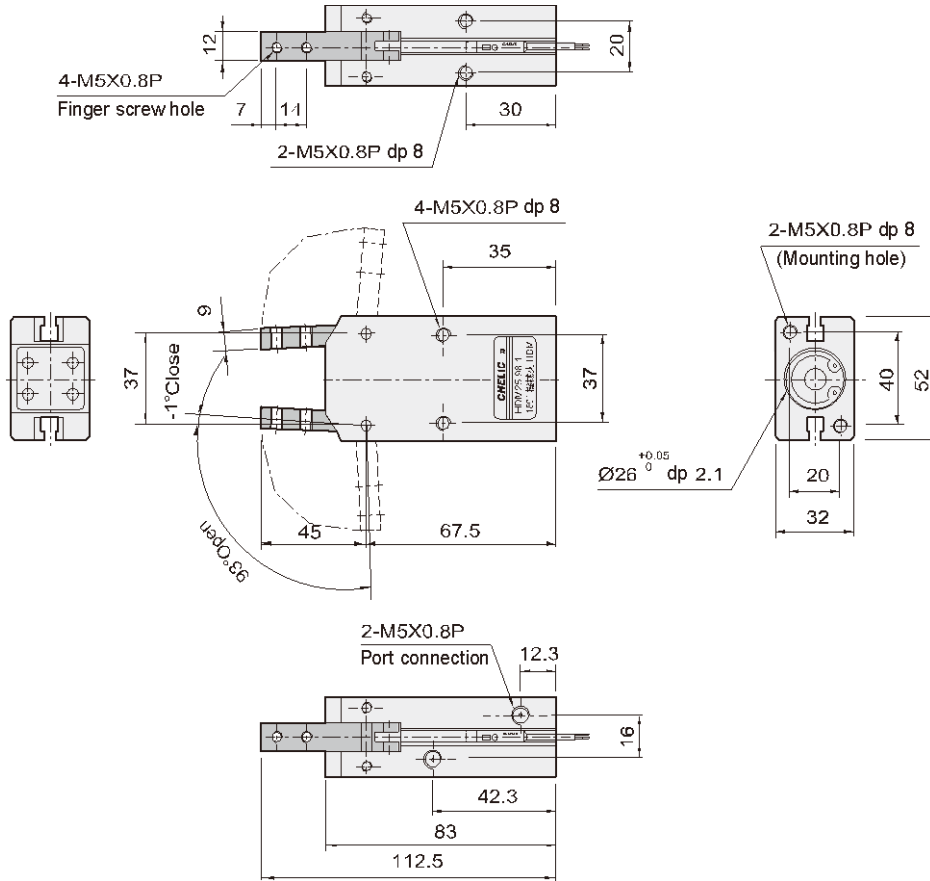
Dimensions

ADM-12

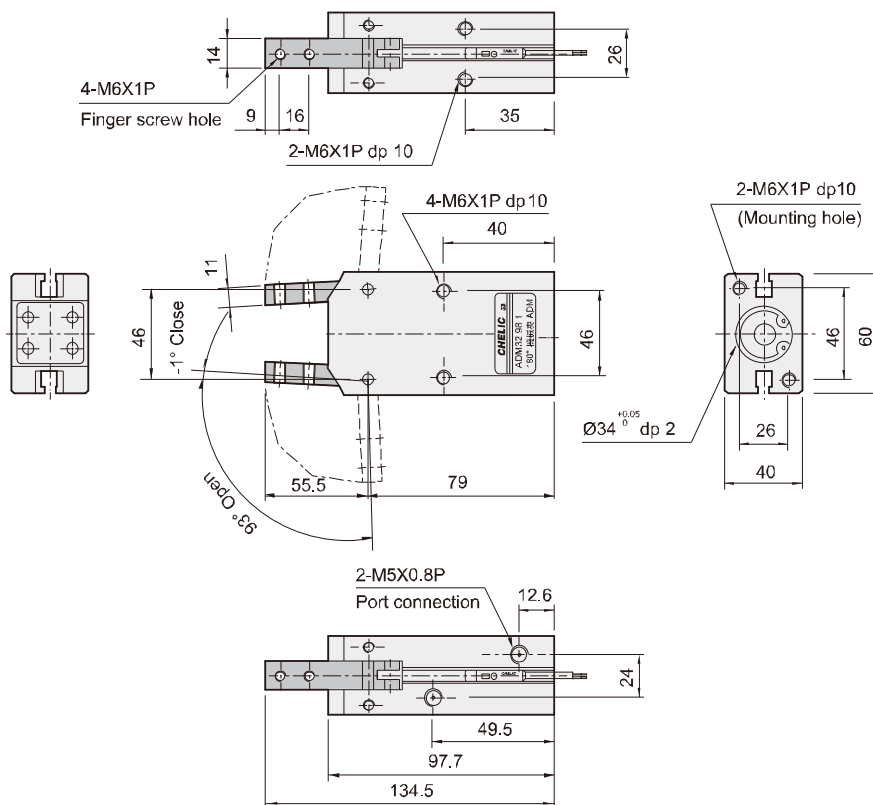




ADM-25



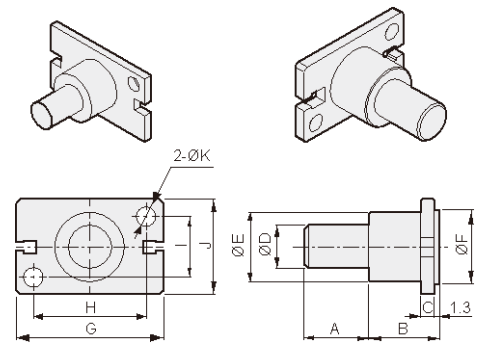
ADM-32



■ AM type mounting bracket(Available to internal mounting)

Unit: mm

Model \ Mark	A	B	C	D	E	F	G	H	I	J	K
AM 12	10	10	2	8	12	11	23	20	10	16	3.5
AM 16	15	15	3	10	16	17	34	26	14	22	4.5
AM 20	15	15	3	10	18	21	45	35	16	26	5.5
AM 25	25	17	5	14	26	26	52	40	20	32	6.6
AM 32	25	20	6	16	30	34	60	46	26	40	6.6



■ AB type mounting bracket(Available to external mounting)

Unit: mm

Model \ Mark	A	B	C	D	E	F	G	H	I	J	K	L
AB 12	4	15	12	5	-	M3 x 0.5p	13	27	20	10	16	3.5
AB 16	6	20.5	16	5	6	M4 x 0.7p	17	34	26	14	22	4.5
AB 20	8	20.5	20	7	7	M4 x 0.7p	21	45	35	16	26	5.5
AB 25	10	30.5	25	8	10	M4 x 0.7p	26	52	40	20	32	6.5
AB 32	12	40.5	32	10	15	M4 x 0.7p	34	60	46	26	40	6.5

