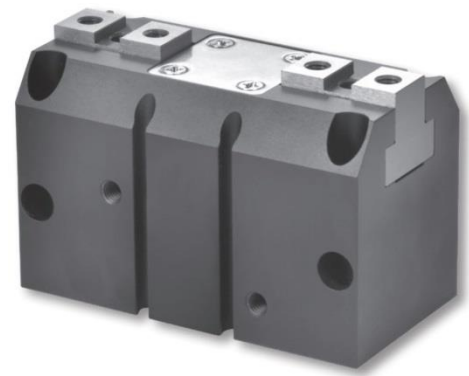




AMH2 series 2-Finger Heavy-load Type Air Gripper



Feature

- Wedge slider type
- Built-in magnet
- Large output and good stability

Specification

Item	Bore size (mm)	Ø20	Ø25	Ø32	Ø40	Ø50	Ø63	Ø80	Ø100
Action		Double acting							
Fluid		Air							
Pressure range	kgf / cm ² (kPa)	3 ~ 7 (300 ~ 700)							
Ambient and fluidtemperature	°C	-5 ~ 60 (No freezing status)							
Max. operation frequency	time/min	80			60			40	
Lubrication		Non-lube							
Sensing device		With magnet							
Weight (kg)		0.14	0.28	0.48	0.87	1.45	2.21	3.55	7.13

Code of order

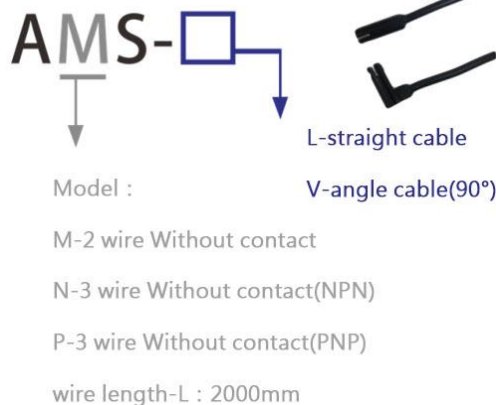
AMH2-20-AMS-L-2

① ② ③

①

Mark	Bore size (mm)
20	Ø20
25	Ø25
32	Ø32
40	Ø40
50	Ø50
63	Ø63
80	Ø80
100	Ø100

②



③

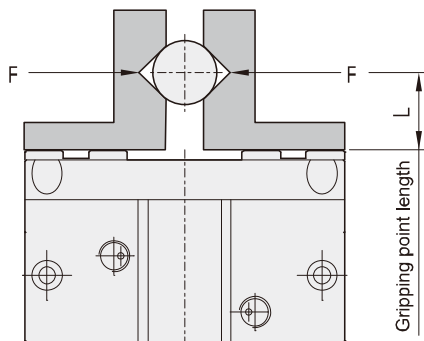
Mark	Sensor quantity
1	With 1 sensor switch
2	With 2 sensor switches

Operating type and data

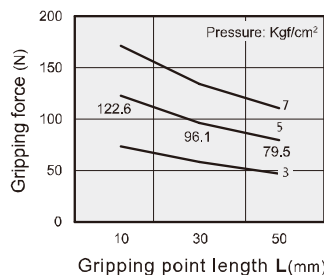
Model	The smallest operating pressure (kgf/cm ²)	Thread port (mm)	Effective gripping force (N)	
			Open	Close
AMH2 20	3	4-M3x0.5Px4.5 dp	Open	94
			Close	84
AMH2 25	3	4-M4x0.7Px5 dp	Open	148
			Close	134
AMH2 32	3	4-M5x0.8Px8 dp	Open	245
			Close	221
AMH2 40	3	4-M6x1.0Px10 dp	Open	451
			Close	402
AMH2 50	3	4-M6x1.0Px10 dp	Open	738
			Close	662
AMH2 63	3	4-M8x1.25Px13 dp	Open	1245
			Close	1117
AMH2 80	3	4-M10x1.5Px10dp	Open	1600
			Close	1500
AMH2 100	3	4-M12x1.75Px16 dp	Open	2300
			Close	2252

Note: The gripping force is the force of open and close gripper which in the length of gripping point is 30mm and acting pressure is 5kgf/cm².

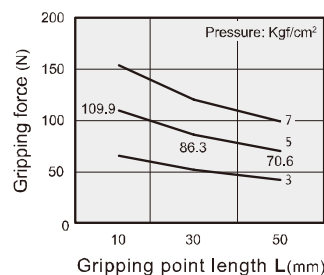
Gripping force characteristic



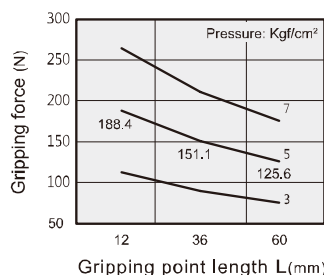
AMH2 20 - OPEN



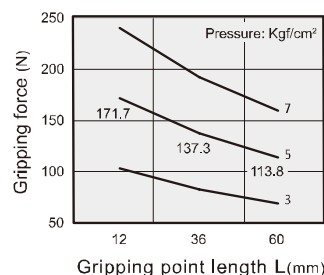
AMH2 20 - CLOSE



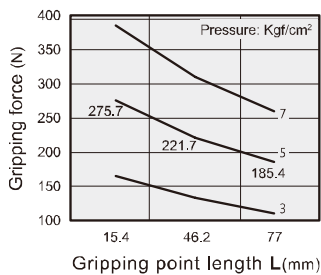
AMH2 25 - OPEN



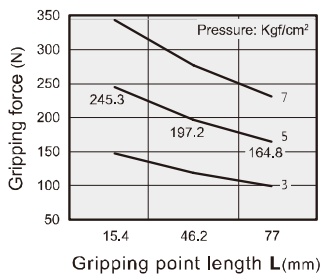
AMH2 25 - CLOSE



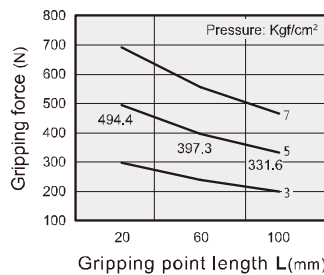
AMH2 32 - OPEN



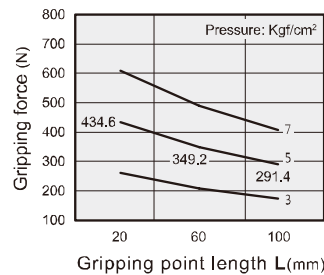
AMH2 32 - CLOSE



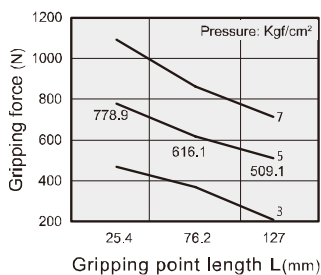
AMH2 40 - OPEN



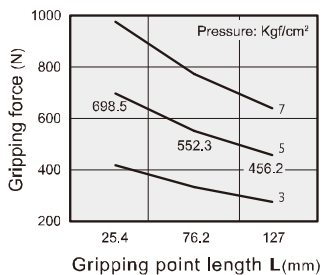
AMH2 40 - CLOSE



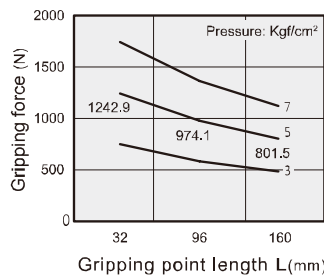
AMH2 50 - OPEN



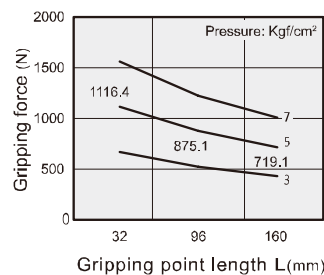
AMH2 50 - CLOSE



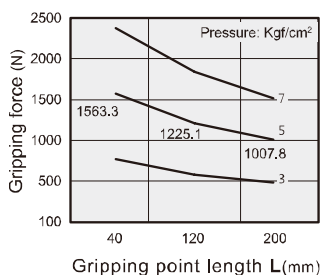
AMH2 63 - OPEN



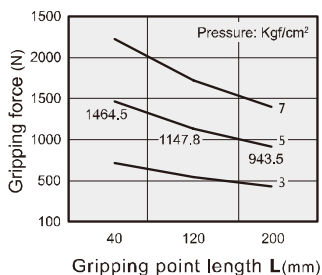
AMH2 63 - CLOSE



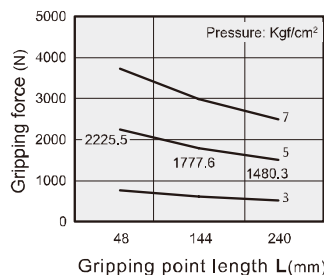
AMH2 80 - OPEN



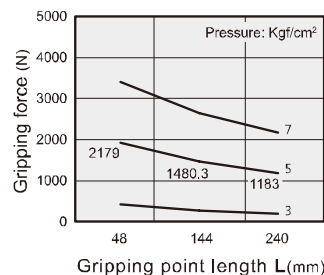
AMH2 80 - CLOSE



AMH2 100 - OPEN

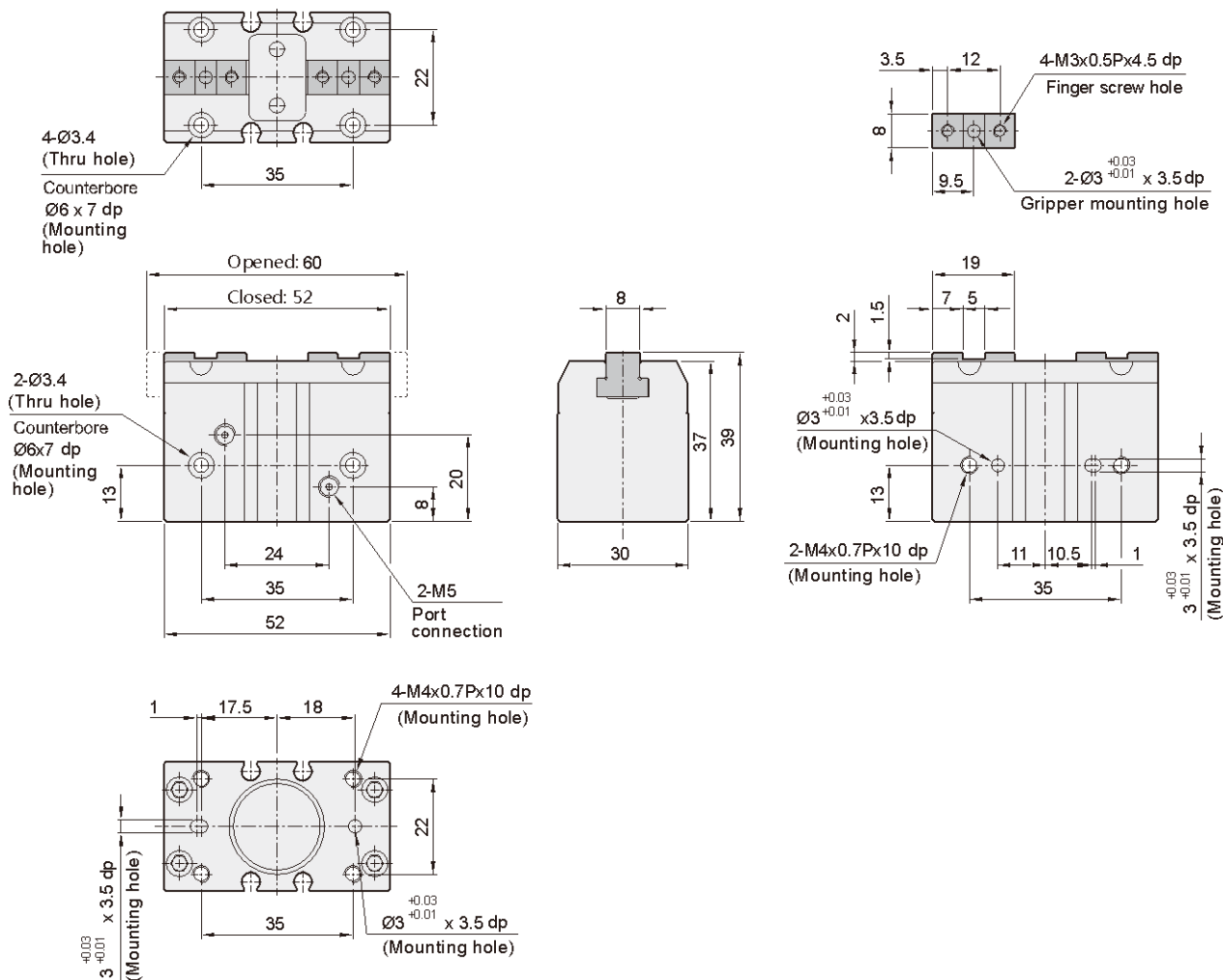


AMH2 100 - CLOSE

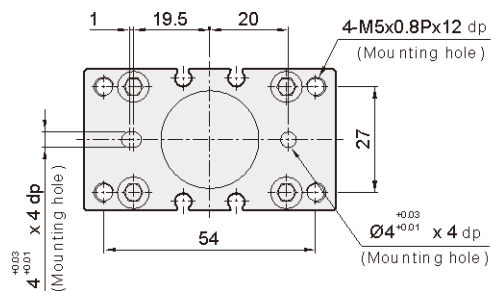
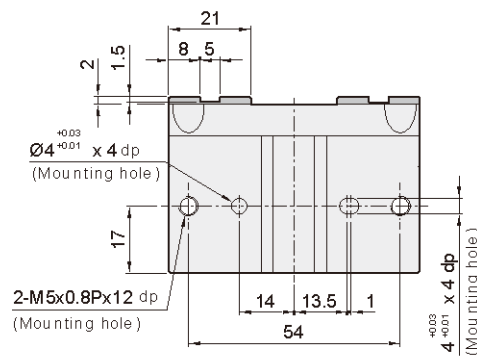
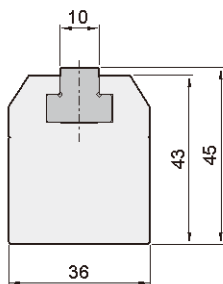
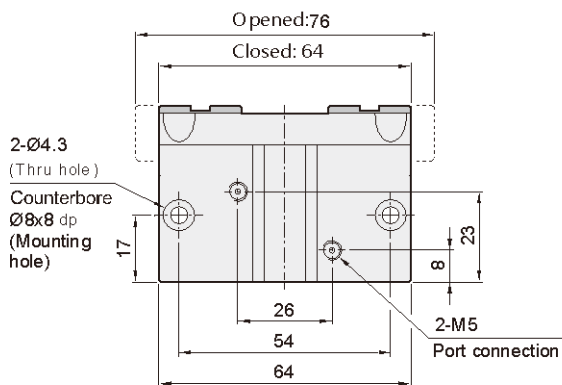
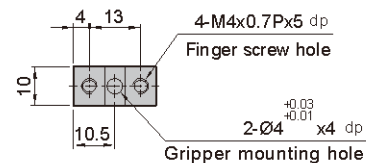
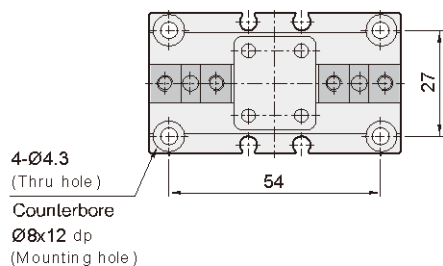


Dimensions

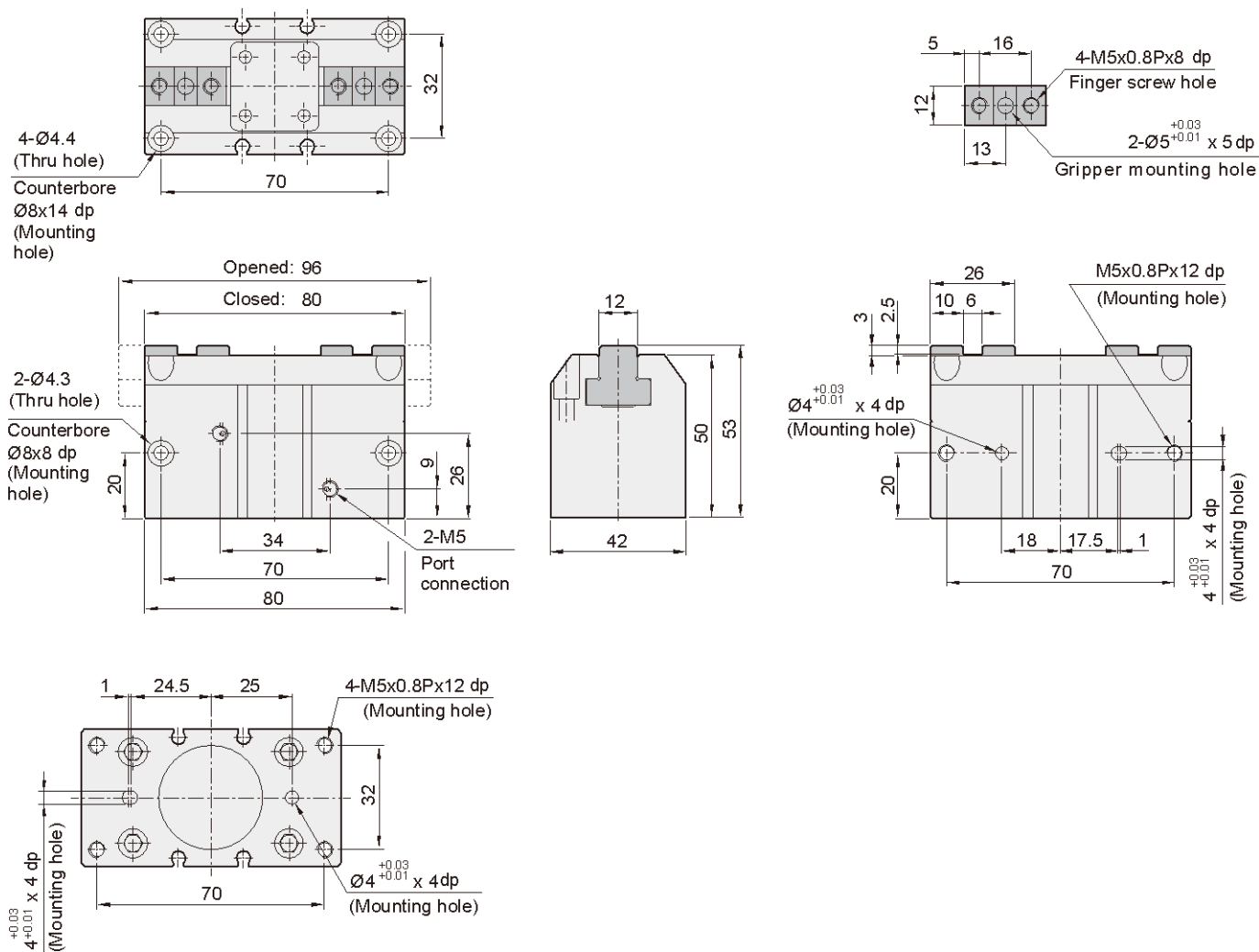
■ AMH2-20



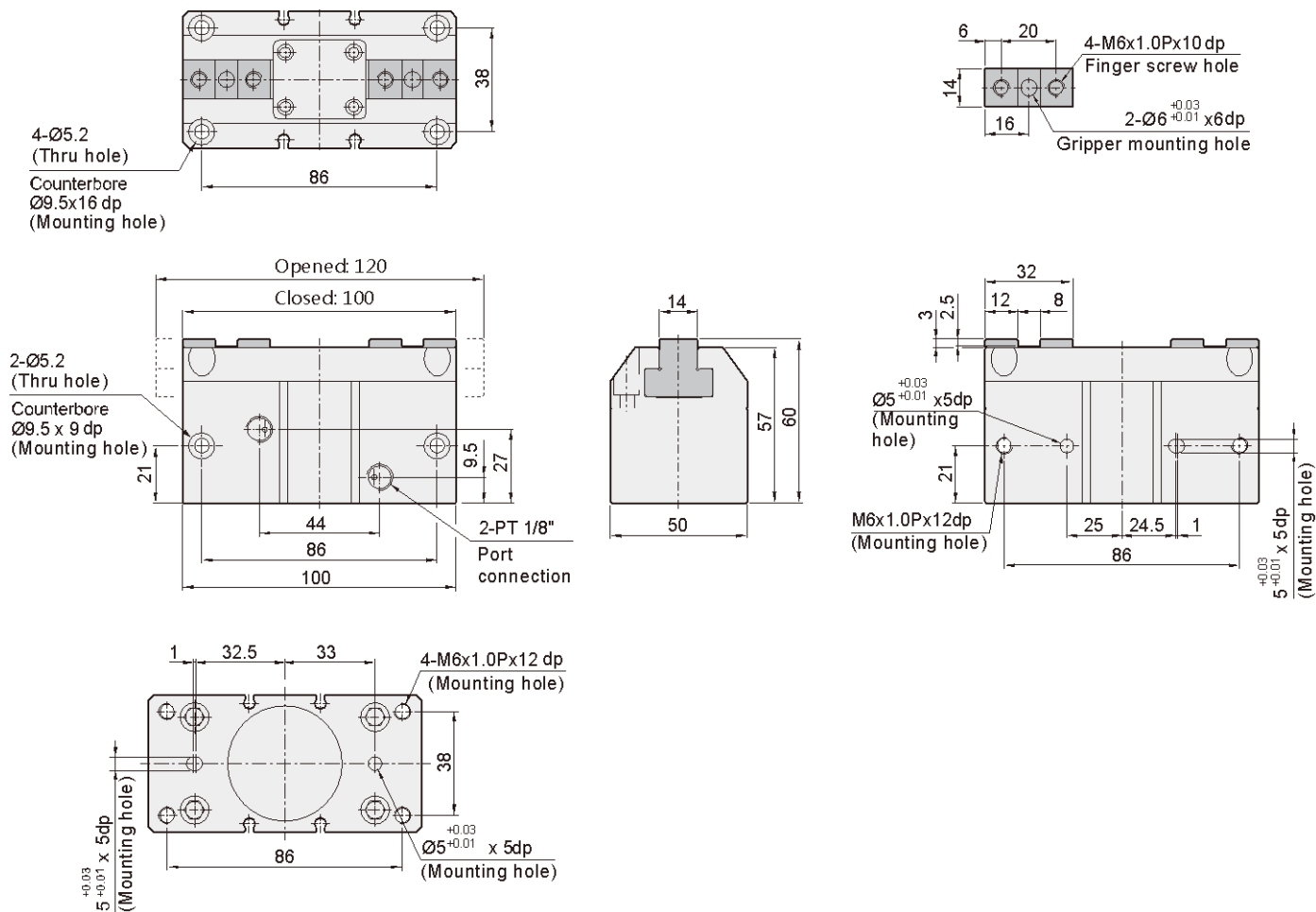
AMH2-25



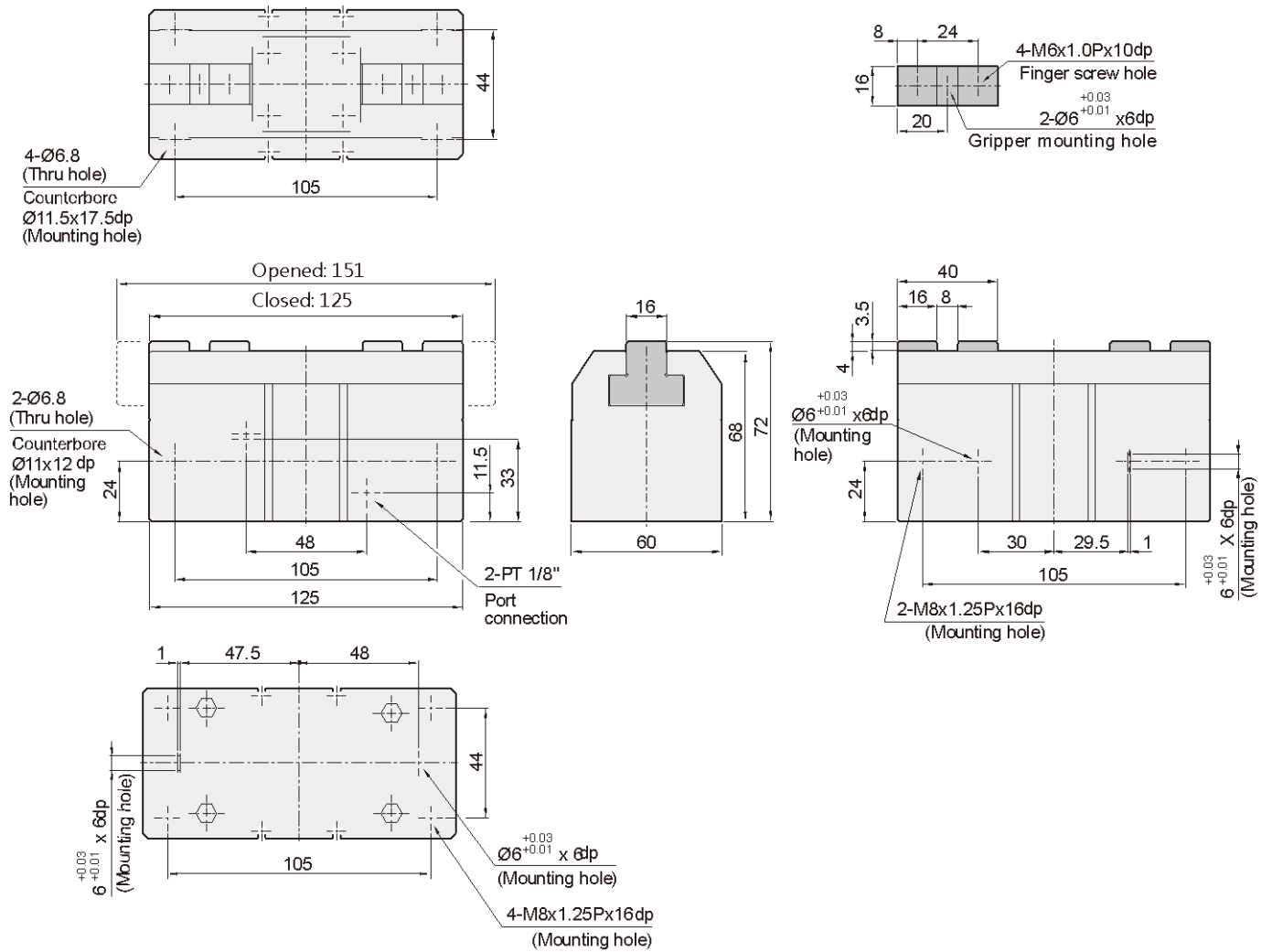
AMH2-32



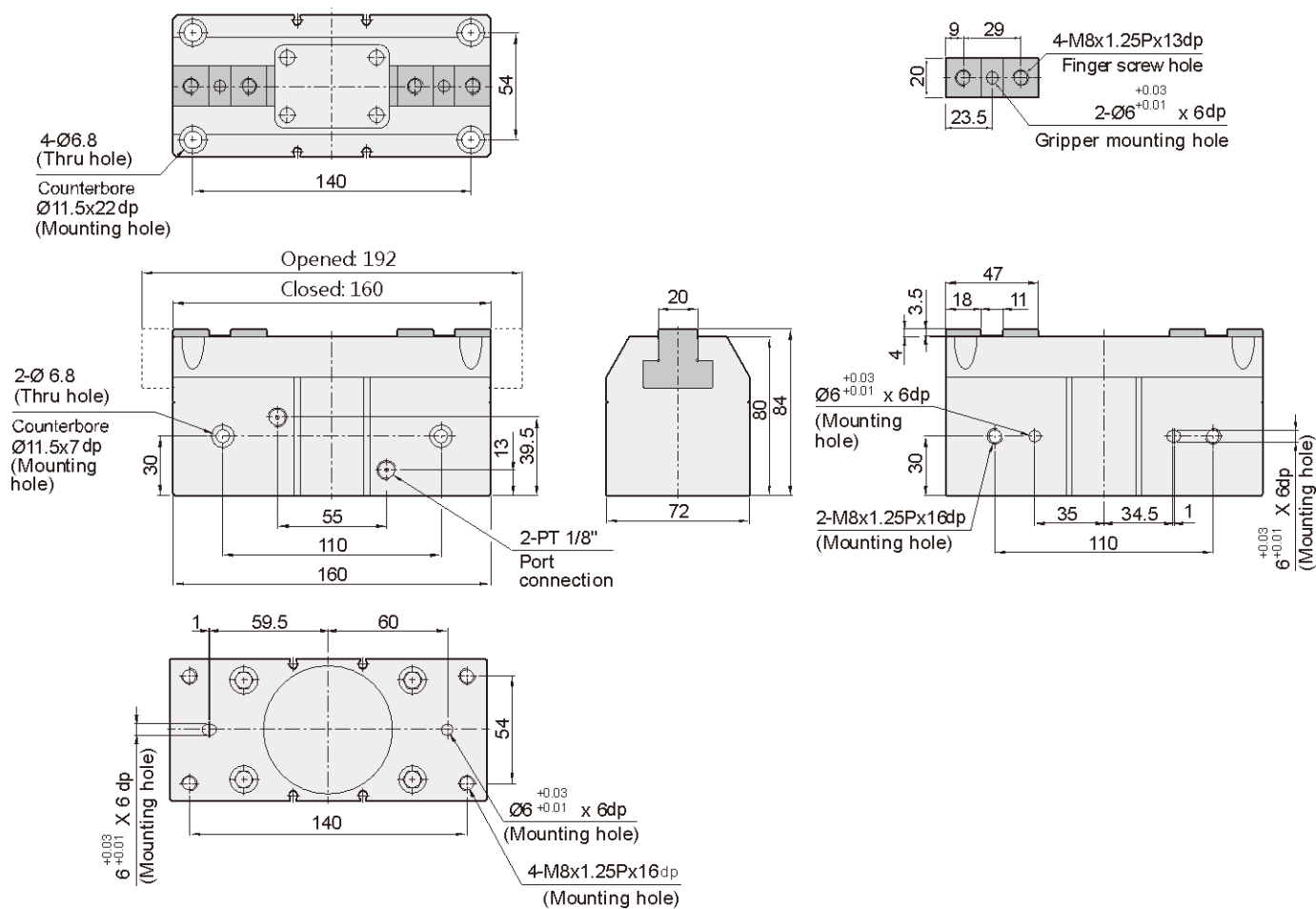
AMH2-40



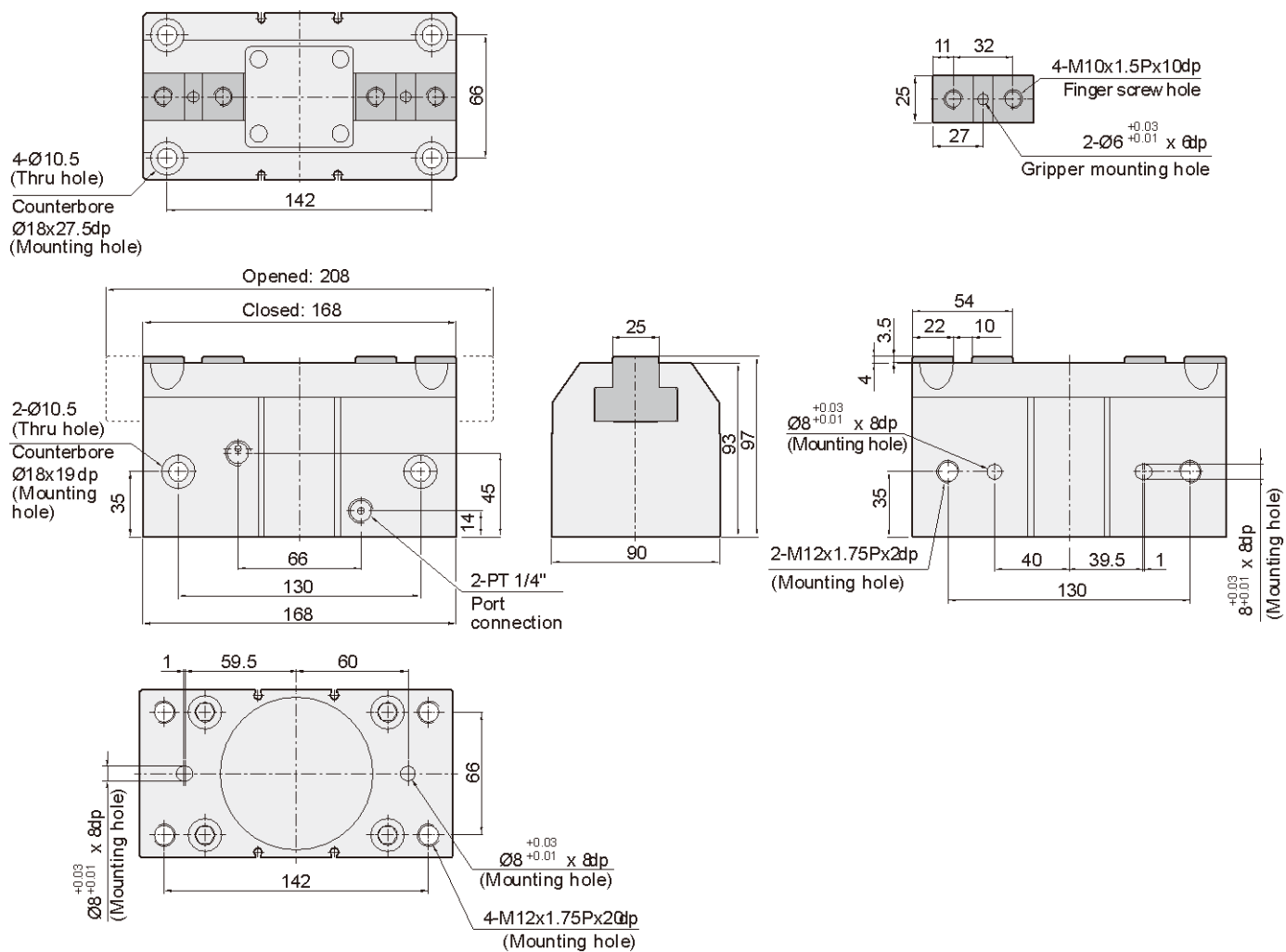
AMH2-50



AMH2-63



AMH2-80



AMH2-100

