



## AMQ series Rotary Gripper



### Feature

- 90° , 180° rotary and gripping
- Built-in magnet
- 3 finger centre gripping

### Specification

Item	Bore size (mm)	Ø10	Ø16	Ø20	Ø25
Action		Double acting			
Fluid		Air			
Pressure range kgf / cm <sup>2</sup> (kPa)	Gripper unit	2 ~ 7 ( 200 ~ 700 )			
	Rotary unit	2.5 ~ 7 ( 250 ~ 700 )			
Ambient and fluid temperature	°C	5 ~ 60			
Rotation angle	°	90, 180			
Torque force	N·m	0.27	0.52	1.4	2.8
Allowable kinetic energy	J	0.004	0.013	0.032	0.07

### Product weight

Bore size	Weight(kg)
Ø10	1.1
Ø16	1.6
Ø20	2.1
Ø25	2.7

Note: All of above are theoretical data.  
Weight tolerance about±5%



## Code of order

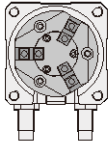
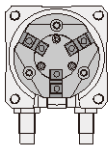
AMQ-10 A-180-C1-AMS-L-2

① ② ③ ④ ⑤ ⑥

①

Mark	Bore size (mm)
10	Ø10
16	Ø16
20	Ø20
25	Ø25

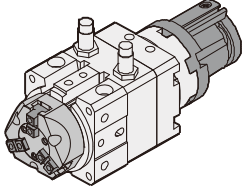
②

Mark	Starting Position	Description
A		B port face to gripper in horizontal position
B		B port face to gripper in vertical position

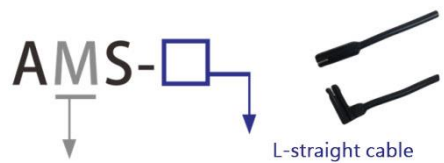
③

Mark	Rotation angle
90	90°
180	180°

④

Mark	Sensor switch holder	Quantity
None	Without sensor switch holder	—
C		1 = 1 piece 2 = 2 piece

⑤



Model :

M-2 wire Without contact

N-3 wire Without contact(NPN)

P-3 wire Without contact(PNP)

wire length-L : 2000mm

⑥

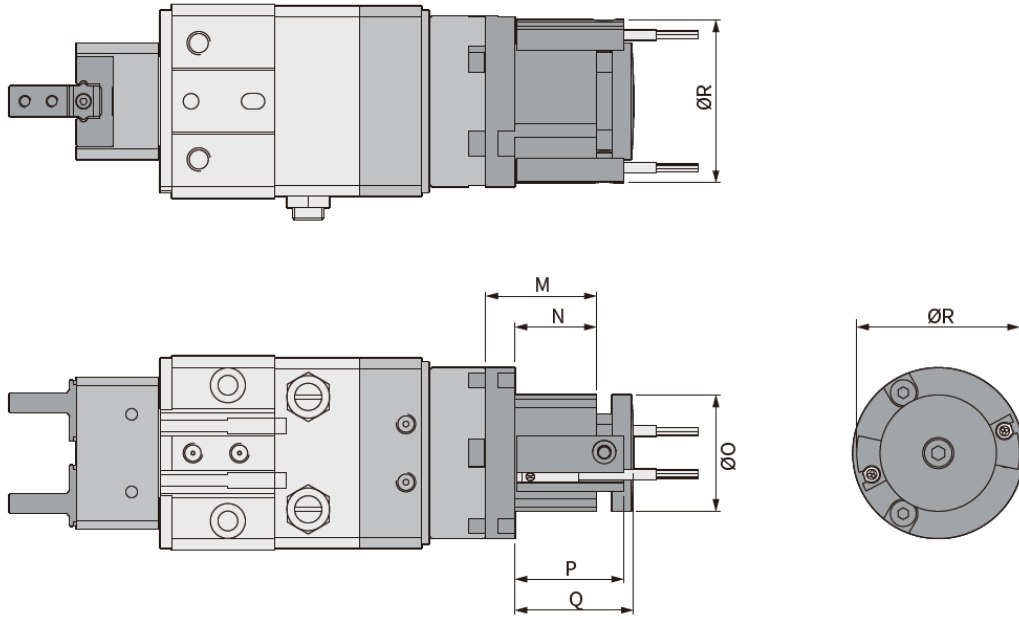
Mark	Sensor quantity
1	With 1 sensor switche
2	With 2 sensor switche
3	With 3 sensor switche
4	With 4 sensor switche

● Sensor q'ty to gripper unit: 2piece

● Sensor q'ty to rotary unit: 2piece

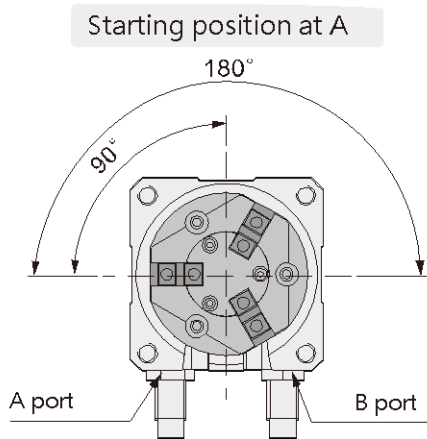


## Sensor switch holder

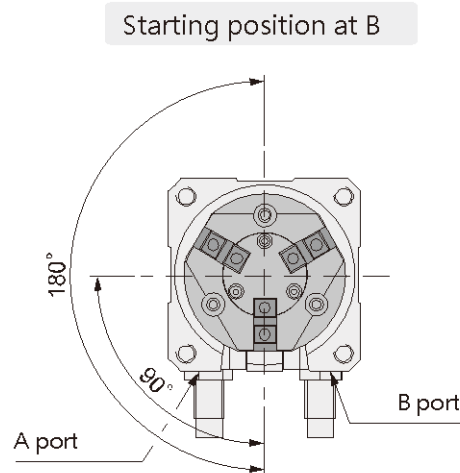


Bore size	M	N	O	P	Q	R
Ø10	28	22	24	27.3	29.5	34
Ø16	28.5	21	30	28	30.5	42
Ø20	32.5	24	34	30.8	34	47
Ø25	32.5	24	34	30.8	34	47

## Rotation range



From top view, B port is to activate gripper

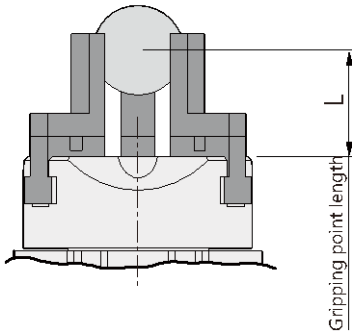
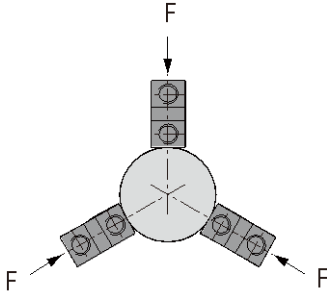


From top view, B port is to activate gripper

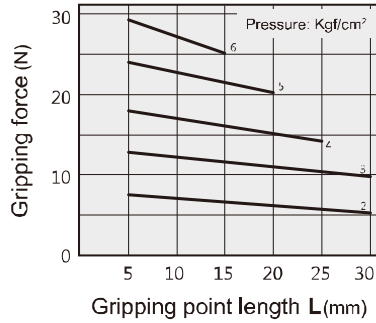


## Characteristics graph

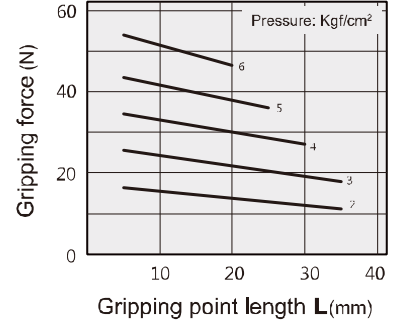
### External grip



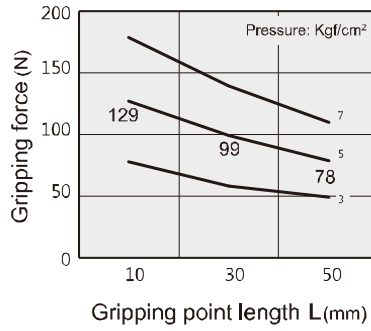
#### AMQ 10



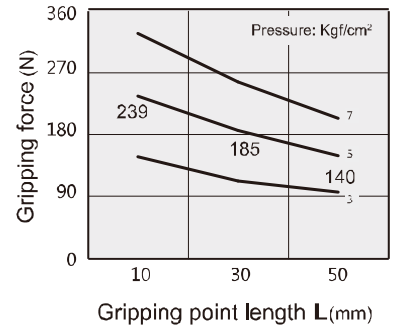
#### AMQ 16



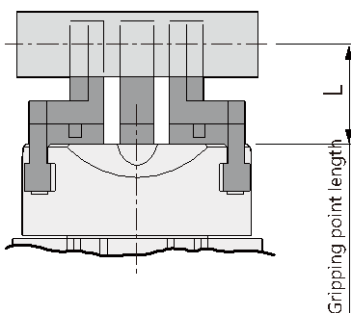
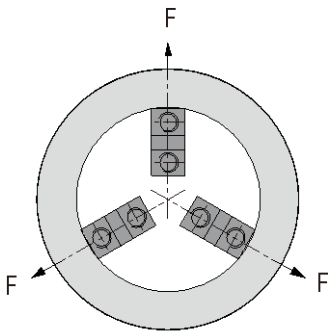
#### AMQ 20



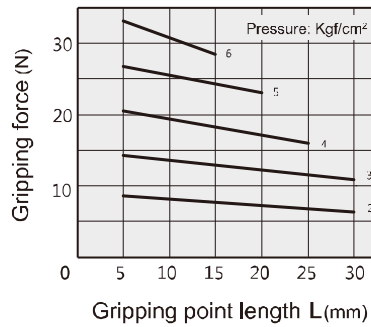
#### AMQ 25



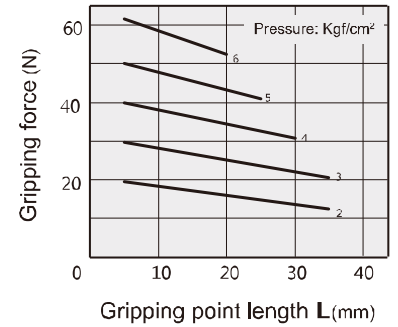
### Internal grip



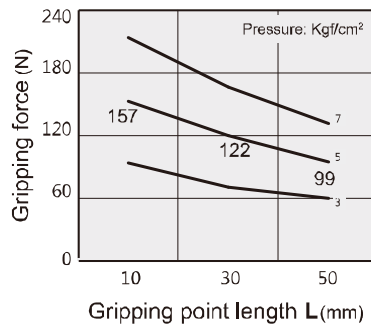
#### AMQ 10



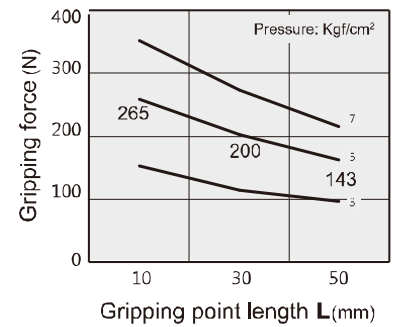
#### AMQ 16



#### AMQ 20



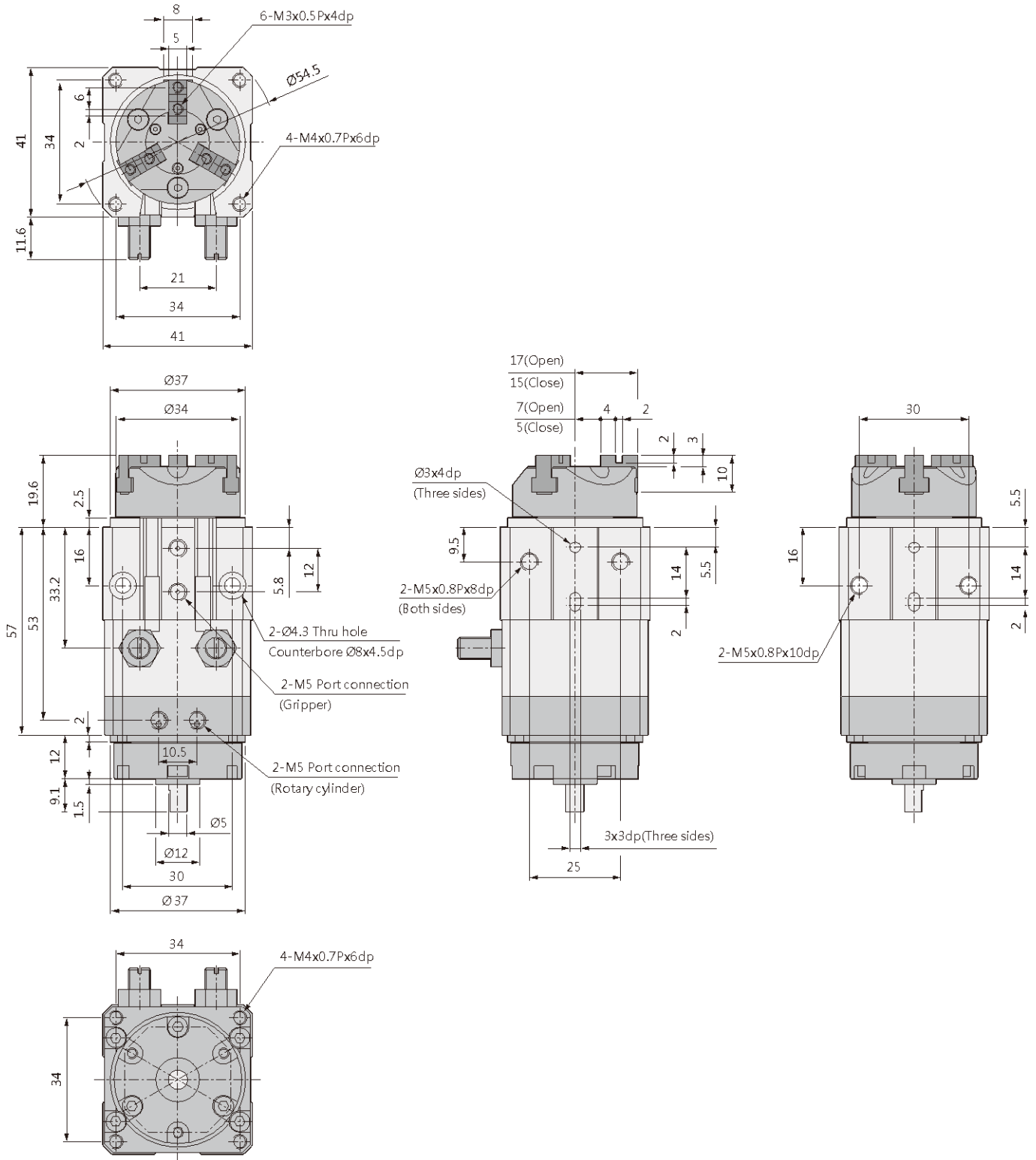
#### AMQ 25





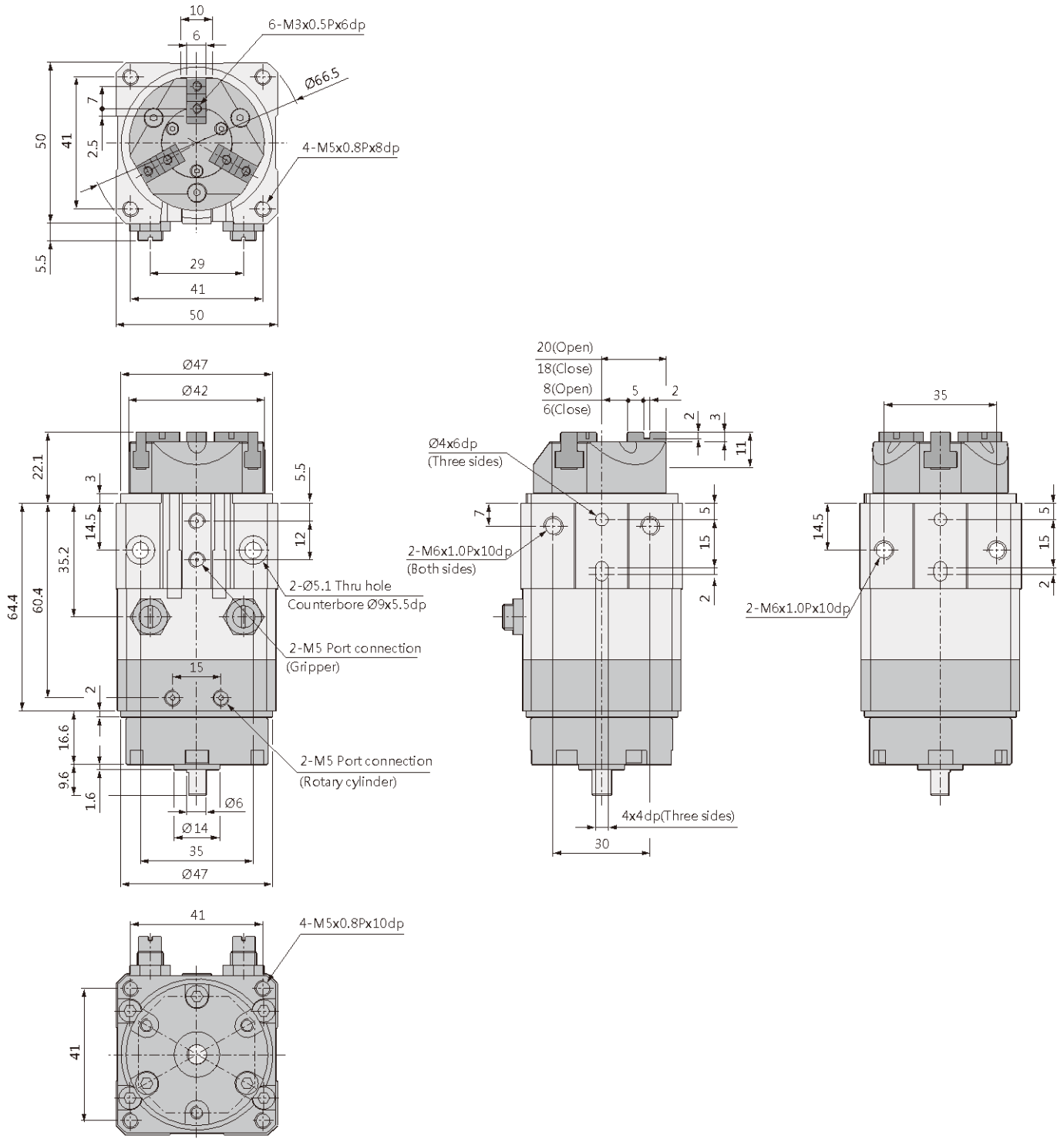
## Dimensions

### AMQ-10



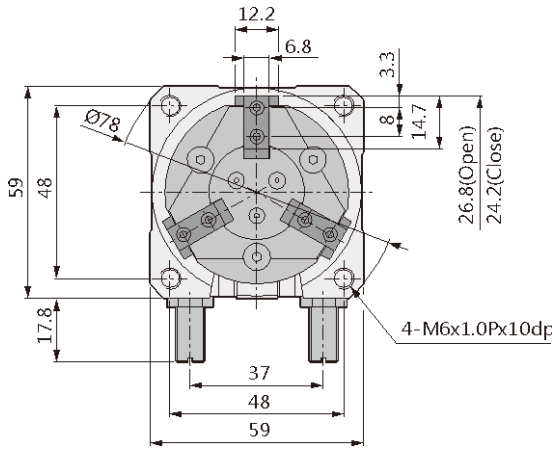


## AMQ-16

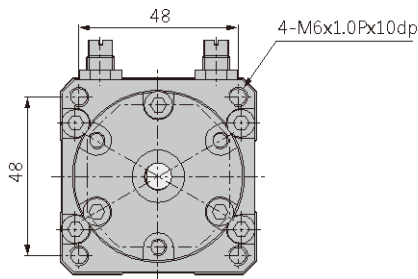
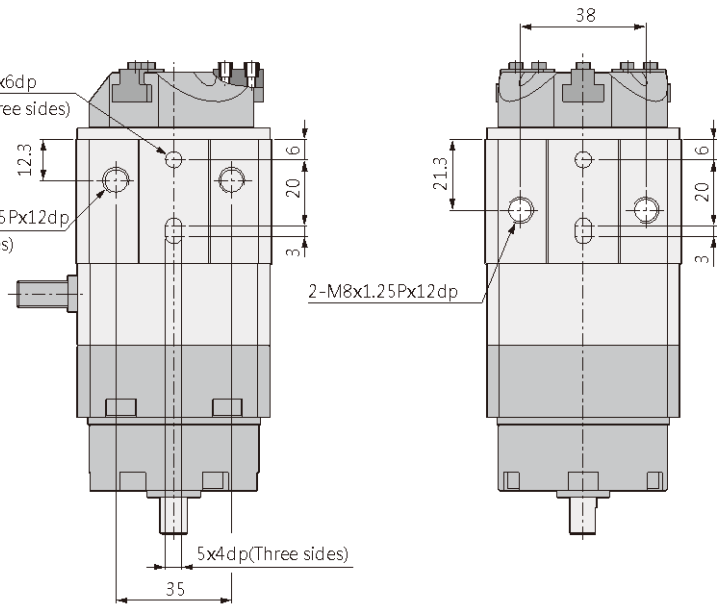
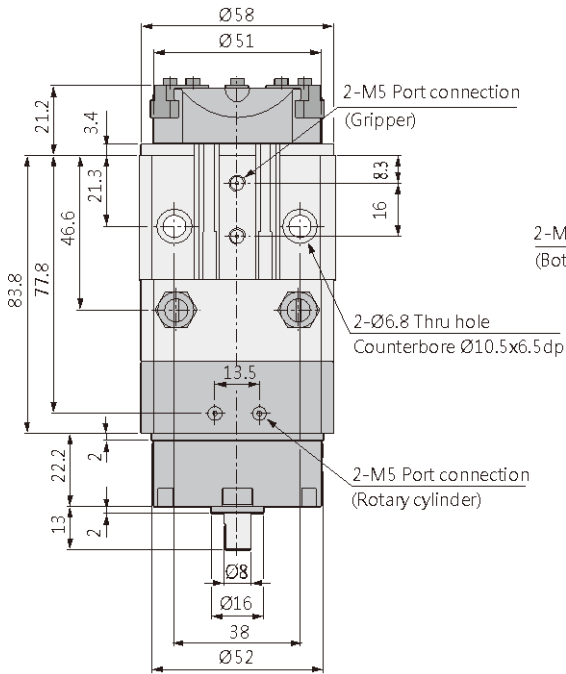
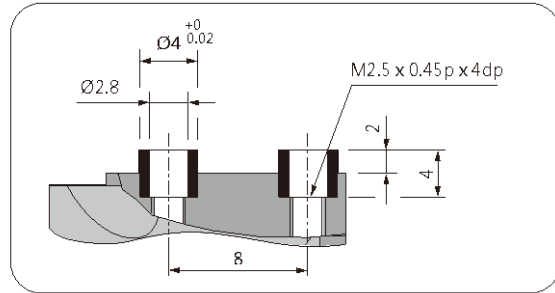




## AMQ-20

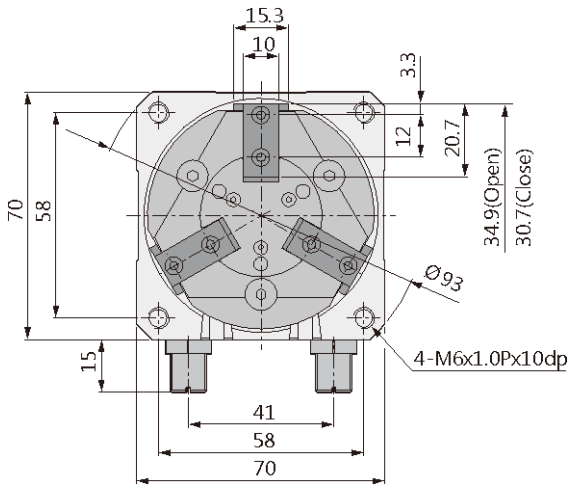


### Close-up of centering sleeve





## AMQ-25



## Close-up of centering sleeve

