



AMW series

Rotary Gripper

Feature

- 90° , 180° rotary and gripping
- Built-in magnet
- Wedge bevel structure



Specification

Item	Bore size (mm)	Ø10	Ø16	Ø20	Ø25
Action		Double acting			
Fluid		Air			
Pressure range kgf / cm ² (kPa)	Gripper unit	2 ~ 7 (200 ~ 700)			
	Rotary unit	2.5 ~ 7 (250 ~ 700)			
Ambient and fluid temperature	° c	5 ~ 60			
Rotation angle	°	90, 180			
Torque force	N · m	0.27	0.52	1.4	2.8
Allowable kinetic energy	J	0.004	0.013	0.032	0.07

Product weight

Bore size	Weight(kg)
Ø10	1.1
Ø16	1.6
Ø20	2.1
Ø25	2.7

Note: All of above are theoretical data.

Weight tolerance about±5%



Code of order

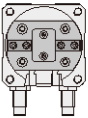
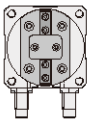
AMW-10 A-180-C1-AMS-L-2

① ② ③ ④ ⑤ ⑥

①

Mark	Bore size (mm)
10	Ø10
16	Ø16
20	Ø20
25	Ø25

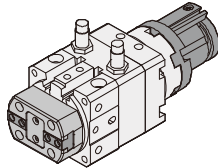
②

Mark	Starting Position	Description
A		B port face to gripper in horizontal position
B		B port face to gripper in vertical position

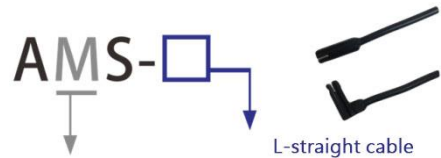
③

Mark	Rotation angle
90	90°
180	180°

④

Mark	Sensor switch holder	Quantity
None	Without sensor switch holder	—
C		1 = 1 piece 2 = 2 piece

⑤



Model :

M-2 wire Without contact

N-3 wire Without contact(NPN)

P-3 wire Without contact(PNP)

wire length-L : 2000mm

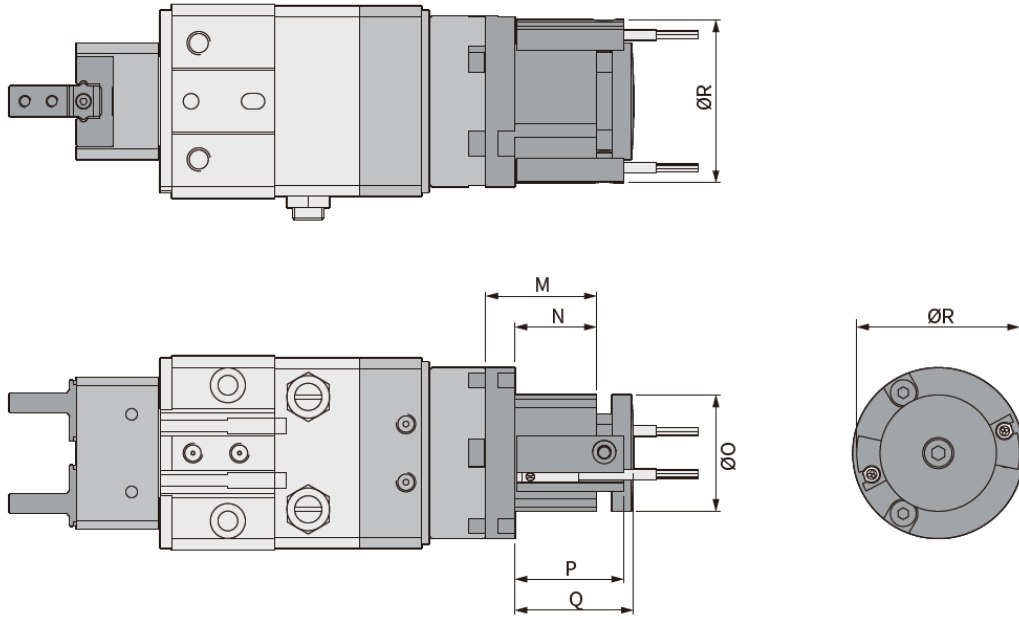
⑥

Mark	Sensor quantity
1	With 1 sensor switche
2	With 2 sensor switche
3	With 3 sensor switche
4	With 4 sensor switche

- Sensor q'ty to gripper unit: 2piece
- Sensor q'ty to rotary unit: 2piece

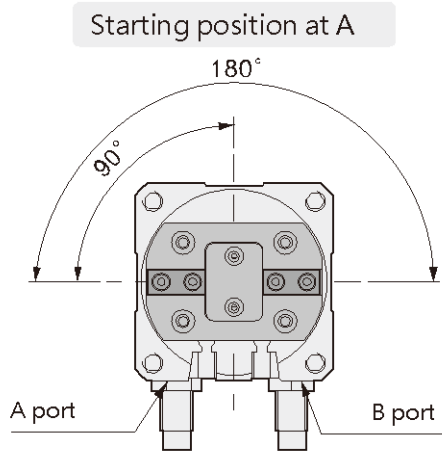


Sensor switch holder

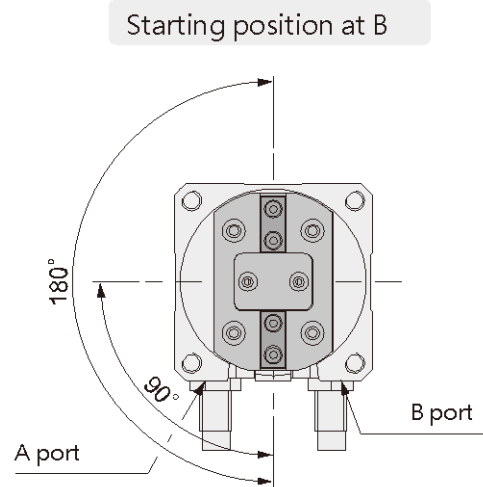


Bore size	M	N	O	P	Q	R
Ø10	28	22	24	27.3	29.5	34
Ø16	28.5	21	30	28	30.5	42
Ø20	32.5	24	34	30.8	34	47
Ø25	32.5	24	34	30.8	34	47

Rotation range



From top view, B port is to activate gripper

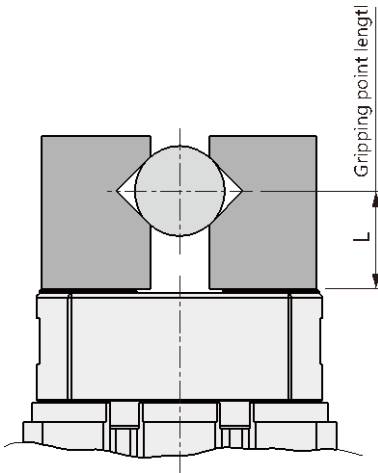


From top view, B port is to activate gripper

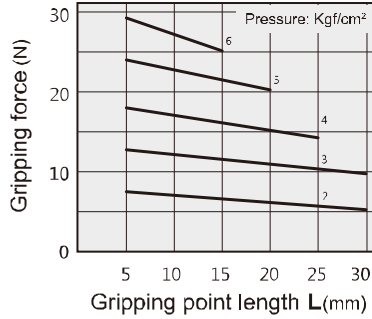


Characteristics graph

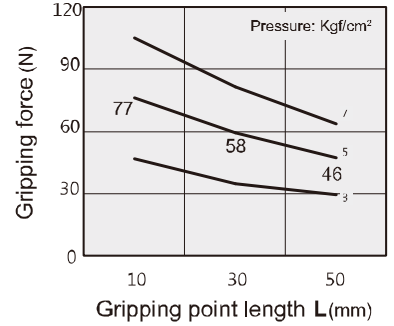
External grip



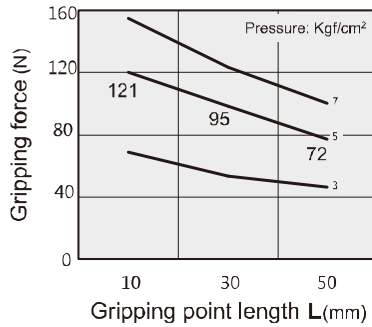
AMW 10



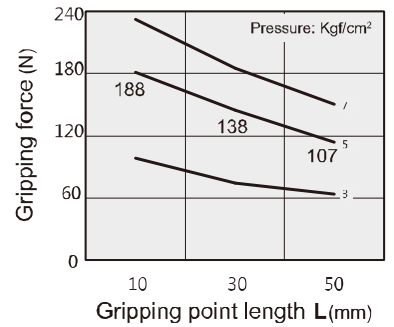
AMW 16



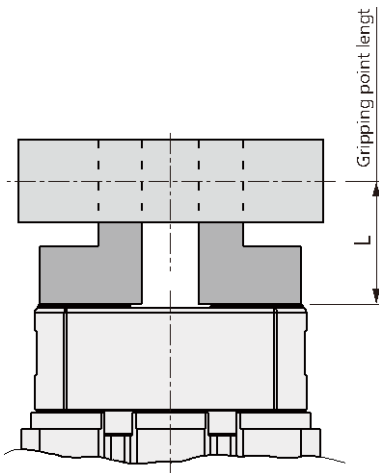
AMW 20



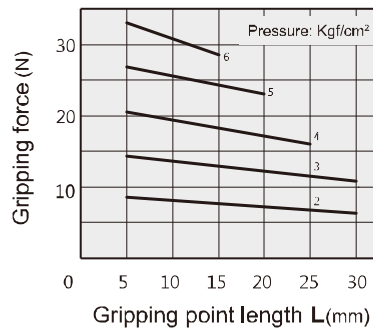
AMW 25



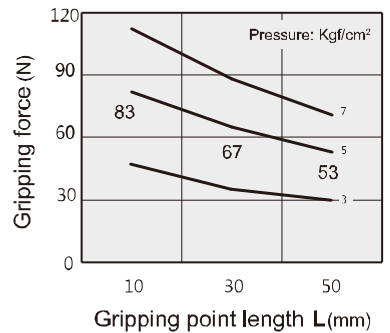
Internal grip



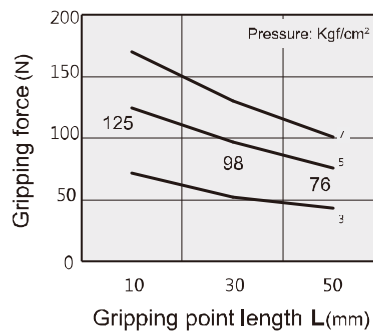
AMW 10



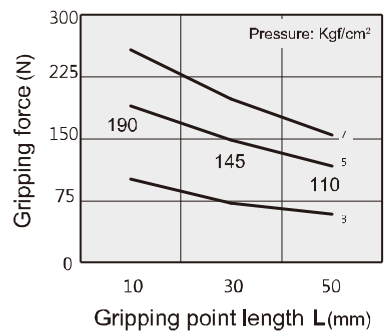
AMW 16



AMW 20



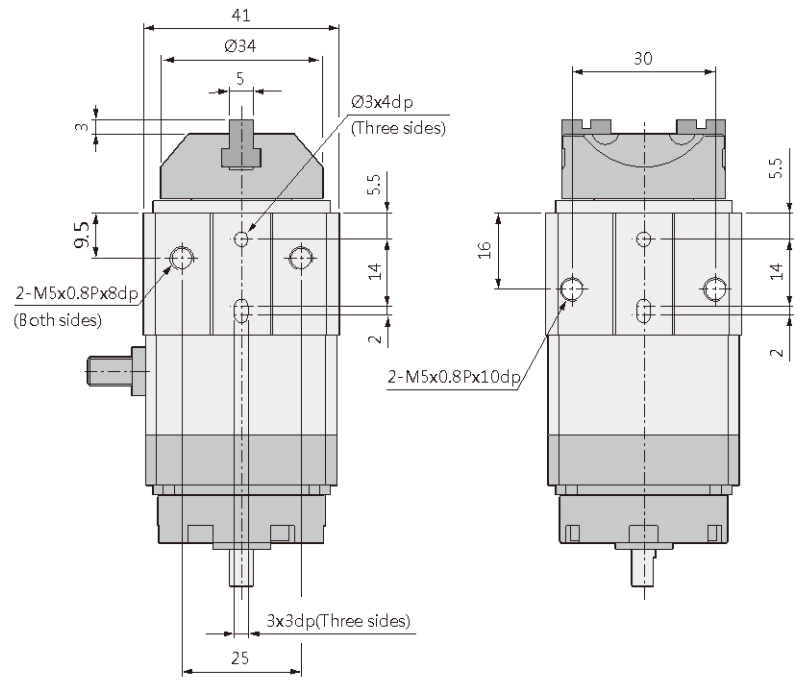
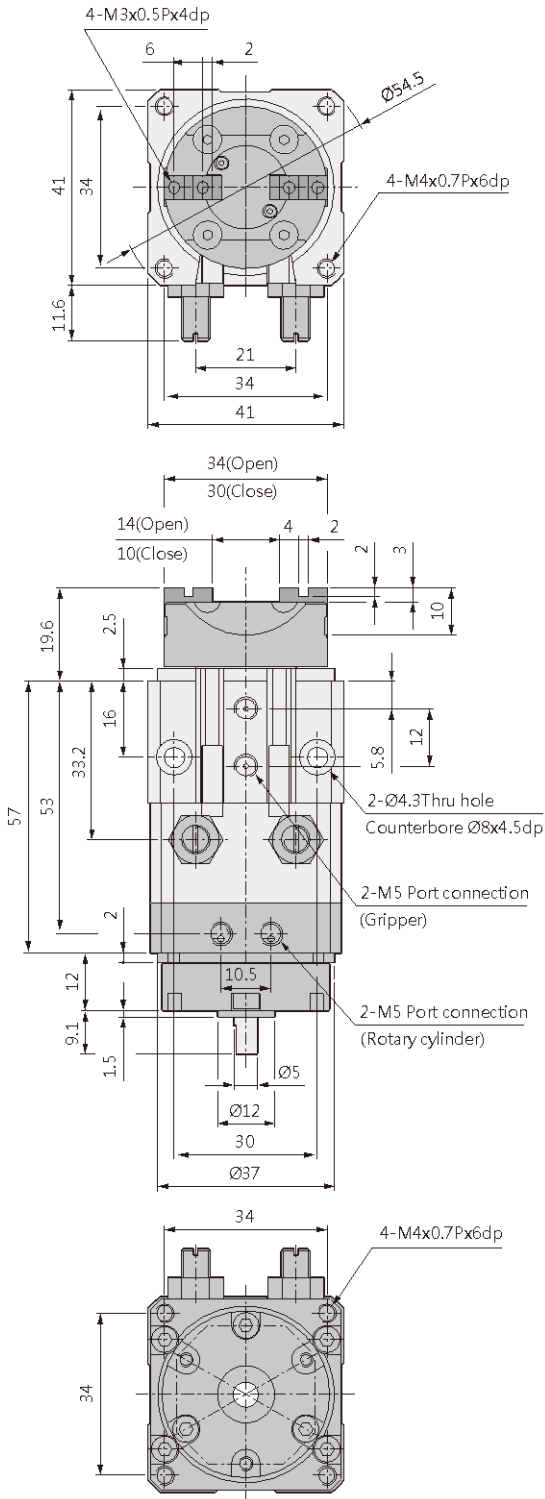
AMW 25





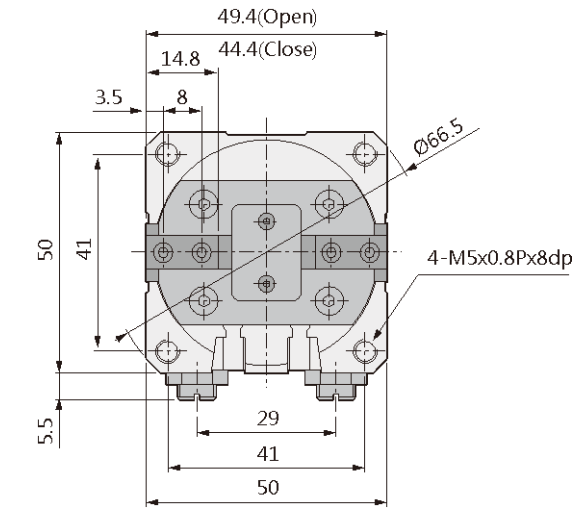
Dimensions

AMW-10

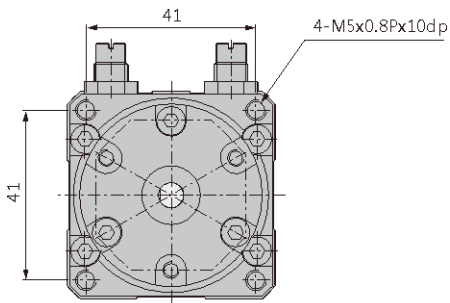
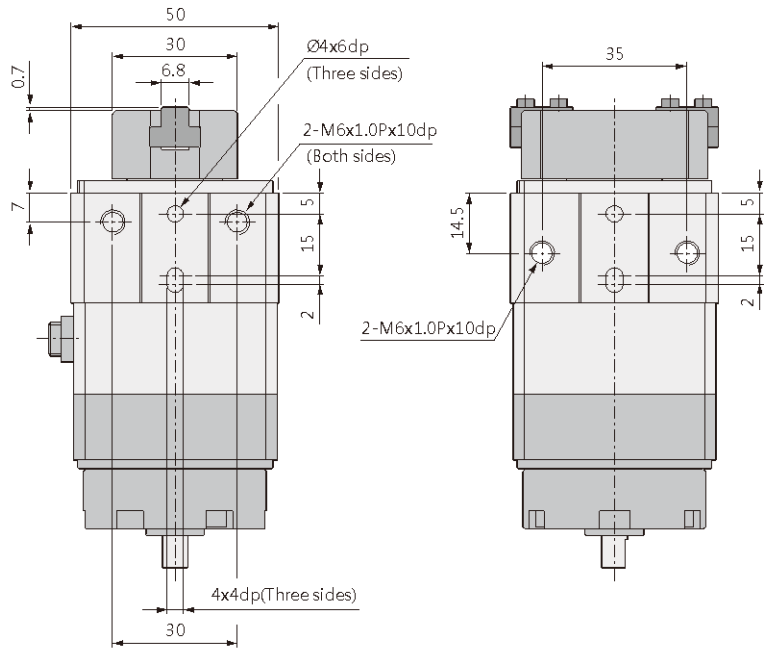
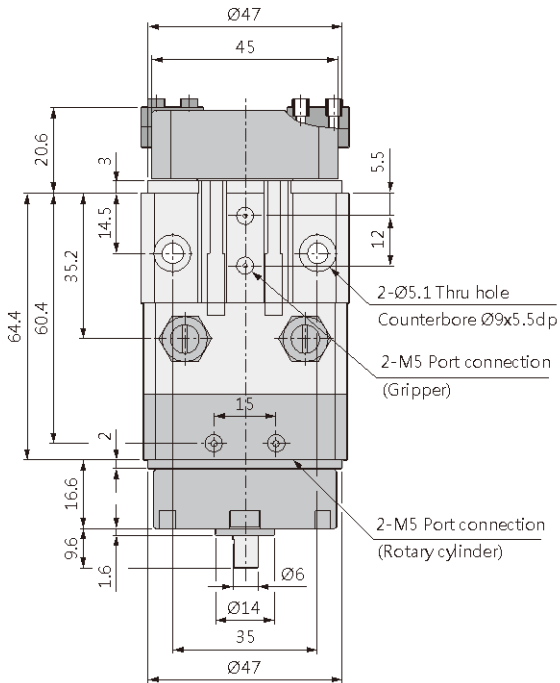
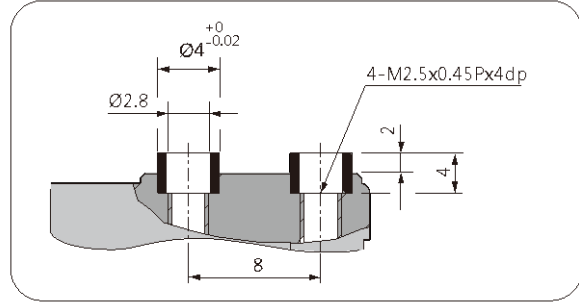




AMW-16

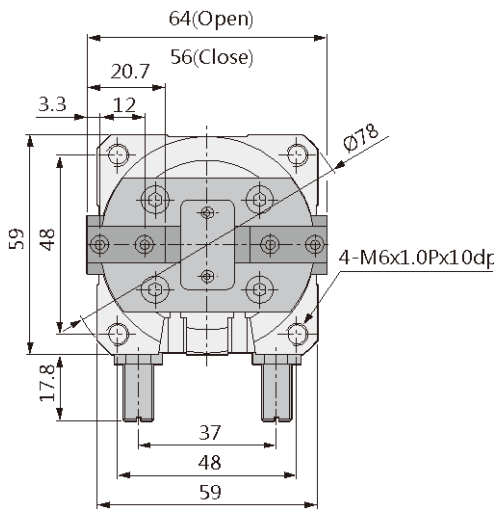


Close-up of centering sleeve

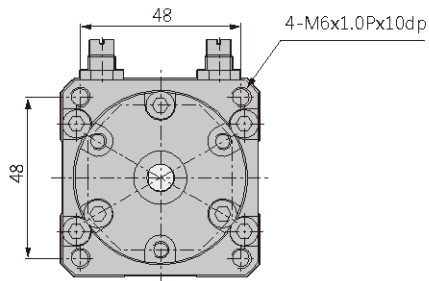
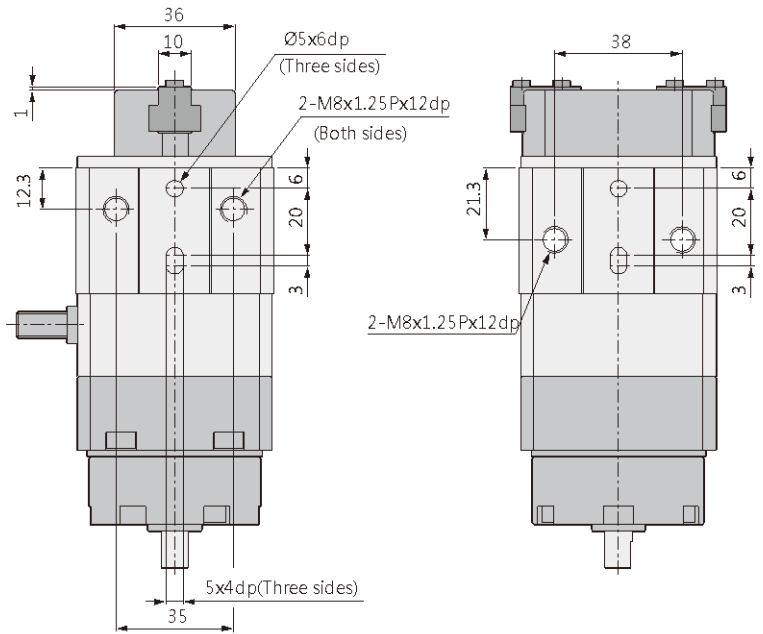
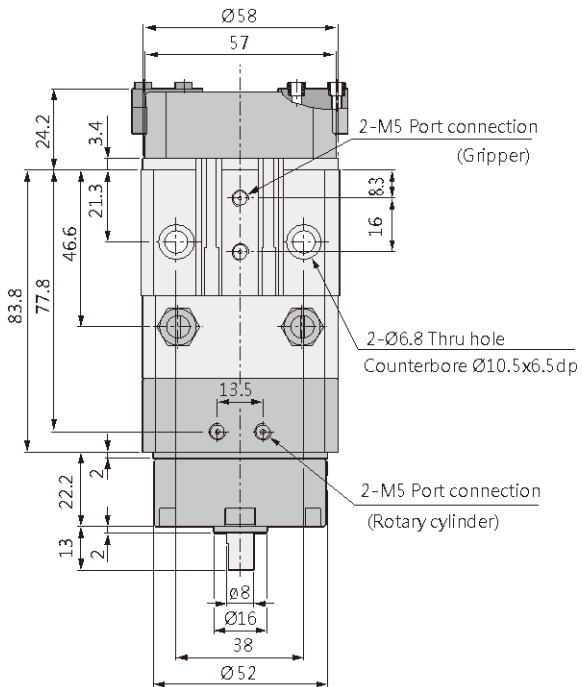
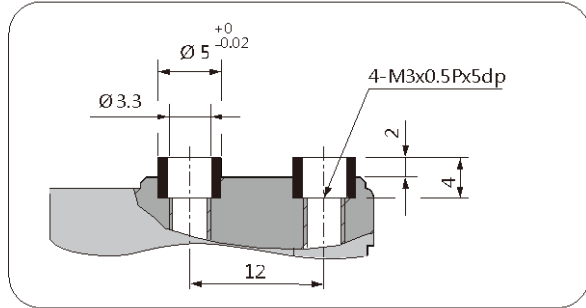




AMW-20

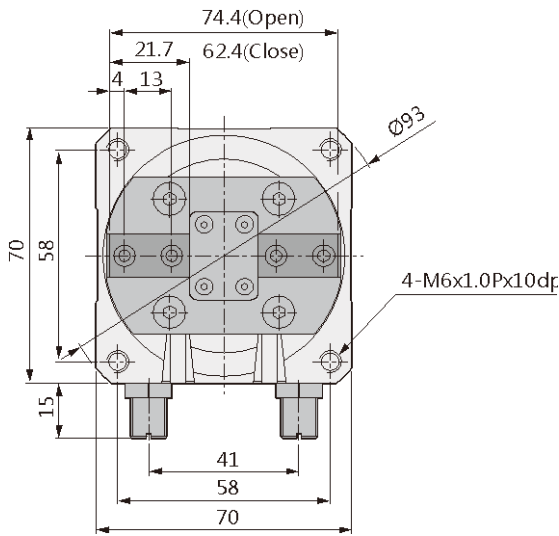


Close-up of centering sleeve





AMW-25



Close-up of centering sleeve

