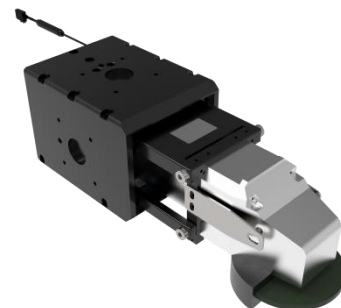



Deburring & Grinding Tool

Electric grinding machine-APC900



 Larger burrs on the curve



filler weld



Straight hole



Outer circle



Plane



Straight strip



Riser

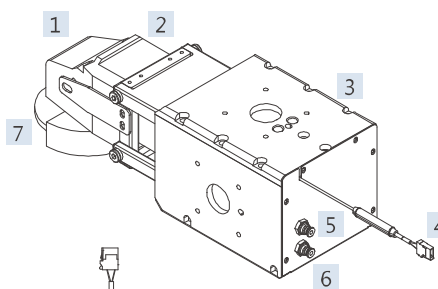
Features

Workpiece contact sensing

Applicable Materials

Aluminum, Copper, Steel, Cast Iron, Stainless Steel, Hard Metals, Plastic, Composite Materials, Wood

| | |
|--|--|
| Function | Electric grinding machine |
| Chuck size | 4" grinding wheel |
| Floating pressure | 0.2-0.5MPa |
| Floating stroke | Unidirectional 8mm |
| Floating force | <100N(Depends on installation direction) |
| Spindle pressure | AC110V |
| Weight | 5.8kg |
| Dimensions (Length, Width, Height) | 350 x 108 x 123 |
| Rotational speed/Reciprocating frequency | 10500RPM |
| Air consumption/Power | 900W |



- 1 Electric grinding machine
- 2 Floating linkage
- 3 Tool body
- 4 Sensor connection cable
- 5 Grinding wheel lifting air inlet
- 6 Grinding wheel downward pressure air inlet
- 7 Consumables replacement

