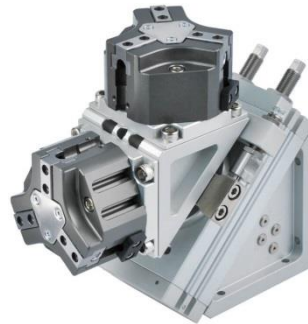
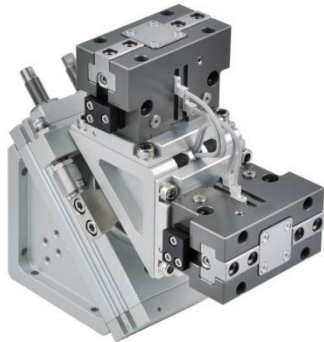




ARH 180° Rotation gripper

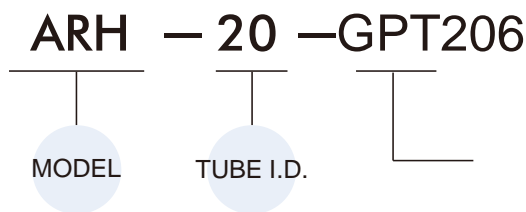
(Applicable to gantry-type robotic arms)



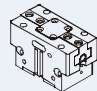
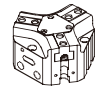
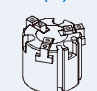
Features

- Hollow shaft design for easy sensor wiring.
- Various grippers are available for exchange.
- Hose-free direct connection: Air supply tunnel can connect directly without piping to assure the flexible when rotating.
- Modular rotation and gripping system for automation applications.
- Water repellent design for environment with cutter fluid.
- Magnetic as standard. Can be used with embedded sensors.

Order example



GRIPPER MODULE

Code	Model	Size	Tube I.D.	Description
GPT-204	GPT 	204	20	2 finger
GPT-206		206		
GPT-208		208		
GPT-210		210		
GPT-212		212		
GDT-304	GDT (1) 	304	20	3 finger
GDT-306		306		
GDT-308		308		
GDT-310		310		
G16	MCH3 (2) 	16	20	3 finger
G20		20		
G25		25		
G32		32		
G40		40		
G50		50		
G63		63		

1Purchase option available: Spring Ejector Device

2 The MCH3 on ARH series is modified. Please contact us if you need to replace it.

Weight

Unit: kg

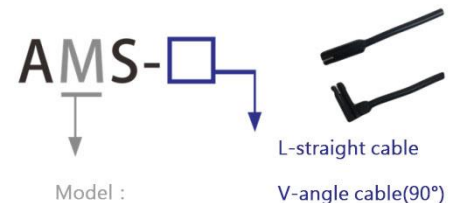
Rotary actuator + gripper module×2				
Size	GPT	GDT	Size	MCH3
50	3.5	3.8	16	3.4
66	3.8	4.2	20	3.5
80	4.2	7.0	25	3.6
100	7.1	8.8	32	3.7
125	8.8	-	40	4.1
			50	6.4
			63	7.4

Specification – Rotation gripper

Model	ARH	
Tube I.D. (mm)	20	25
Port size	Rotary actuator piping: Rc1/8 Gripper piping: M5×0.8	
Rotary angle	180°	
Medium	Air	
Operating pressure range (MPa)	0.45~0.7	
Ambient temperature	+5~+60°C (No freezing)	
Lubrication	Not required	
Sensor switch	AMS-V	
Cushion	Shock absorber *1	
Max. allowable kinetic energy (J)*2	1.21	1.82
Rotary cylinder torque (N.m)	3	5.5

*1. The shock absorber is expendable. Replace when damping performance decrease.

*2. Excluding gripper module.



Model :

M-2 wire Without contact

N-3 wire Without contact(NPN)

P-3 wire Without contact(PNP)

wire length-L : 2000mm

Specification – Gripper

Model	GPT	GDT	MCH3
Operating pressure range (MPa)	0.3~0.8	0.2~0.8	0.2~0.6 (0.1~0.6)*
Sensor switch	RDFEV (Please refer to page 5-11)		

* () for gripper module G32~G63.

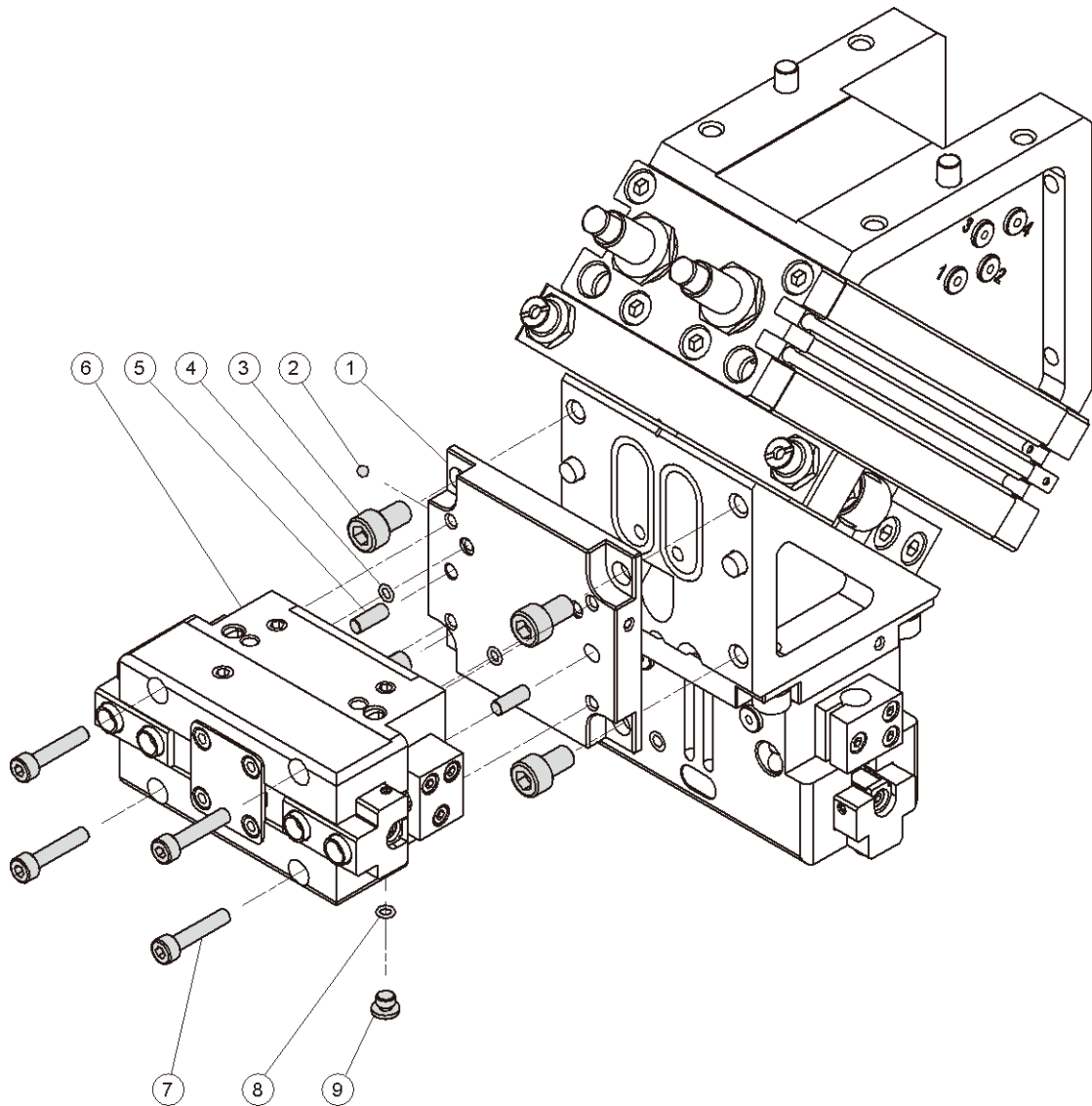
GPT size	204	206	208	210	212
Effective gripping force (N)	69	122	225	315	505
at 0.6 MPa (mm)	40 (clamping length)				

GDT size	304	306	308	310
Effective gripping force (N)	95	177	297	527
at 0.6 MPa (mm)	40 (clamping length)			

MCH3 size	G16	G20	G25	G32	G40	G50	G63
Effective gripping force (N)	15	26	42	69	110	180	301
at 0.5 MPa (mm)*1	20			30			

*1. Clamping length

Install parts

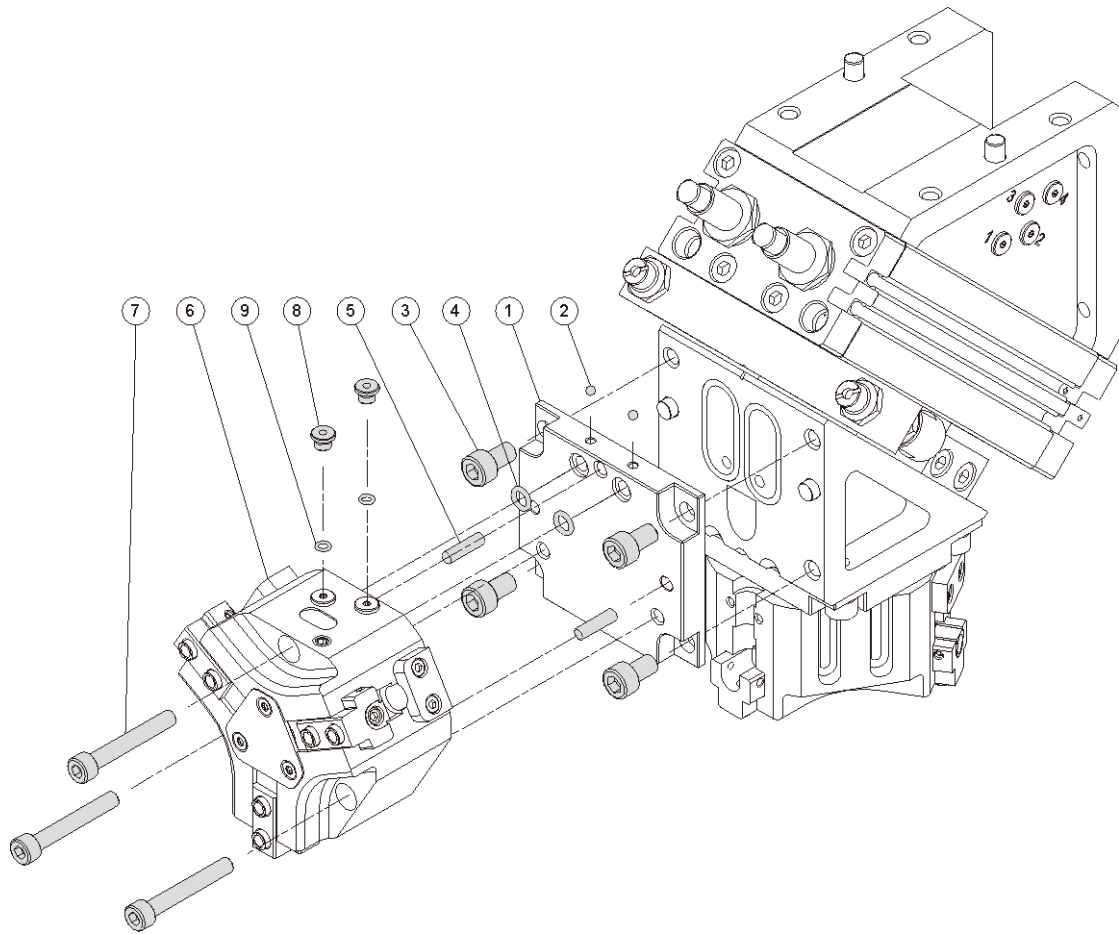


Material

with gripper GPT series			Q'y	
No.	Part name	Material	ARH-20	ARH-25
			204~208	210, 212
1	Connecting board	Aluminum alloy	2	2
2	Ball	Stainless steel	4	4
3	Bolt	Carbon steel	8	8
4	O-ring	NBR	4	4
5	Pin	Steel	4	4
6	GPT Gripper	-	2	2
7	Bolt	Carbon steel	8	8
8	Plug	Copper	4	4
9	O-ring	NBR	4	4



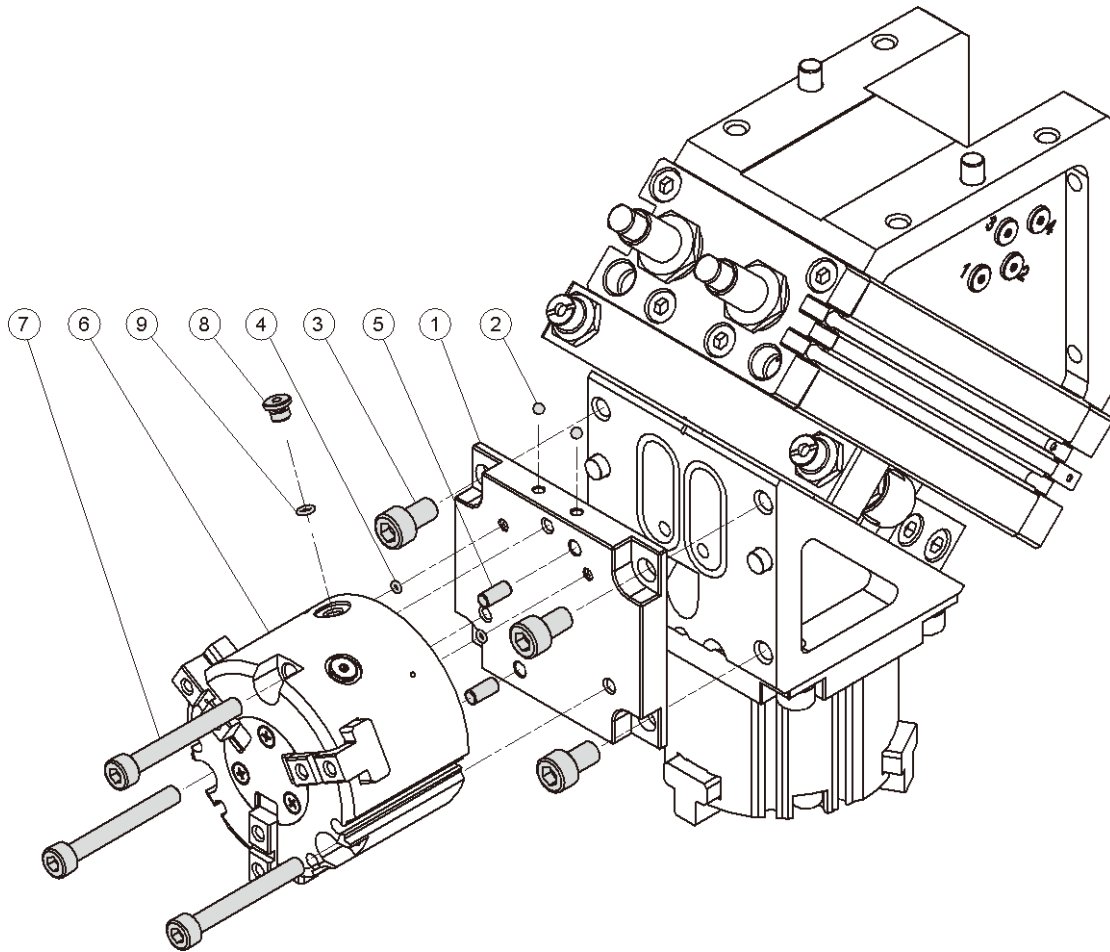
Install parts



Material

with gripper GDT series			Q'y			
No.	Part name	Material	ARH-20		ARH-25	
			304	306	308	310
1	Connecting board	Aluminum alloy	2	2	2	2
2	Ball	Stainless steel	-	4	-	4
3	Bolt	Carbon steel	8	8	8	8
4	O-ring	NBR	4	4	4	4
5	Pin	Steel	4	4	4	4
6	GDT Gripper	-	2	2	2	2
7	Bolt	Carbon steel	6	6	6	6
8	Plug	Copper	4	4	4	4
9	O-ring	NBR	4	4	4	4

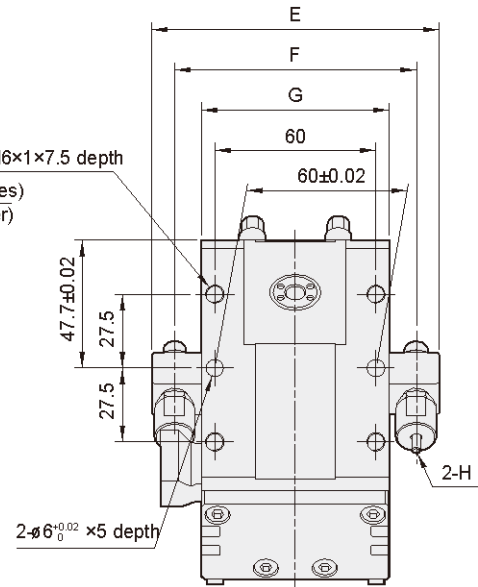
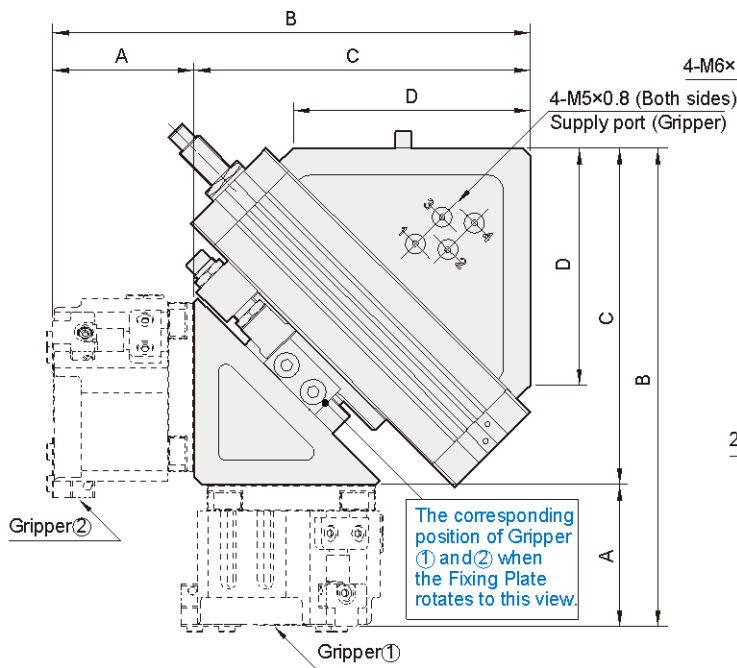
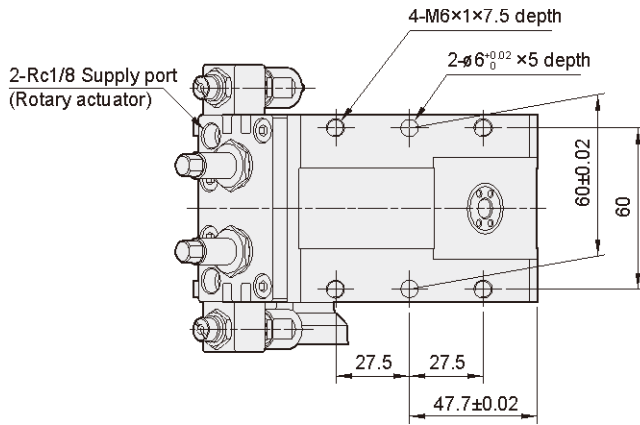
Install parts



■ Material

with gripper MCH3 series			Q'y			
No.	Part name	Material	ARH-20		ARH-25	
			G16	G20~G40	G50	G63
1	Connecting board	Aluminum alloy	2	2	2	2
2	Ball	Stainless steel	4	4	—	4
3	Bolt	Carbon steel	8	8	8	8
4	O-ring	NBR	4	4	4	4
5	Pin	Steel	4	4	4	4
6	MCH3 Gripper	—	2	2	2	2
7	Bolt	Carbon steel	6	6	6	6
8	Screw	Stainless steel	4	—	—	—
	Plug	Copper	—	4	4	4
9	O-ring	NBR	—	4	4	4

Dimensions



Supply port (Gripper)

Gripper											
GPT			GDT			MCH3					
Code Tube I.D. / Size	A	B	Code Tube I.D. / Size	A	B	Code Tube I.D. / Size	A	B			
204	41	166.3	20	304	45	170.3	G16	45	170.3		
206	49	174.3	20	306	53	178.3	G20	48	173.3		
208	59	184.3	25	308	60	211	20	G25	50	175.3	
25	210	65	216	25	310	70	221	G32	54	179.3	
	212	74	225					G40	57	182.3	
								25	G50	65	216
									G63	76	227

Gripper	Gripper open	Gripper close
①	2	1
②	4	3

Code Tube I.D.	C	D	E	F	G	H
20	125.3	88.4	107	90	70	Shock absorber
25	151	94	135	110	80	Shock absorber