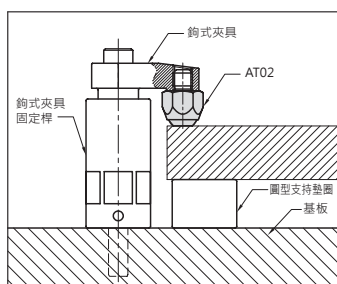


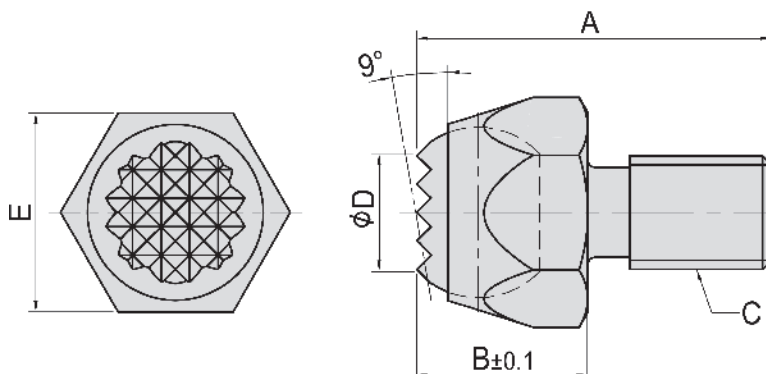


- 材質：本體 S45C，鋼珠 SUJ2
- 熱處理：本體 HRC 28°~32°，鋼珠 HRC 62°
- 表面：染黑處理
- 用途：適用於支持或夾持工件之斜面上，使其不易變形



AT02

齒面動向鋼珠螺桿支持件 SERRATED BALL END BOLT



MODEL NO.	A	B	C	D	E	kg
AT02-0610	21	10	M6x1.00	6	10	0.012
AT02-0814	25	12	M8x1.25	8	14	0.015
AT02-1017	30	16	M10x1.50	10	17	0.025
AT02-1222	35	22	M12x1.75	12	22	0.070
AT02-1627	42	26	M16x2.00	14	27	0.140
AT02-2036	55	27	M20x2.50	14	36	0.280
AT02-2436	65	32	M24x2.00	18	36	0.560
AT02-3046	80	35	M30x2.00	21	46	0.880

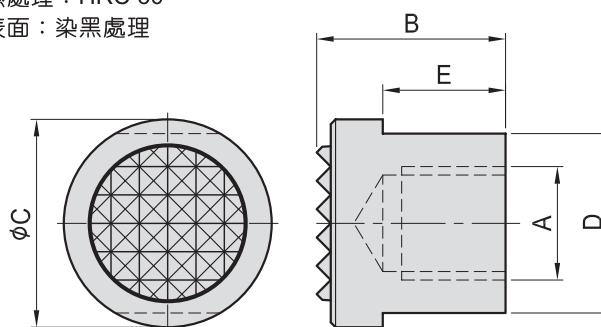
AT13 齒面支持件 SERRATED END



AT13-15

支持件 GRIPPER NUT

- 材質：SCM440
- 熱處理：HRC 60°
- 表面：染黑處理



齒盤

- 材質：SKH9
- 熱處理：HRC 60°

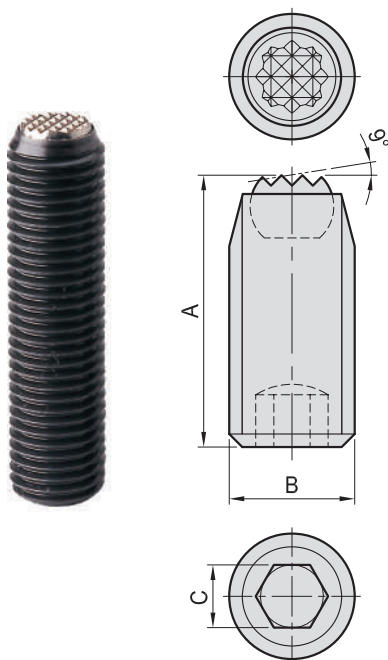
MODEL NO.	A	B	C	D	E	kg
AT13-1220	M12	20	22	19	13	0.043
AT13-1625	M16	25	28	24	16	0.080

齒盤

- 材質：錫鋼

MODEL NO.	A	B	C	D	E	kg
AT13-1220-K	M12	20	22	19	13	0.043
AT13-1625-K	M16	25	28	24	16	0.080

AT16C 齒型
SERRATED END

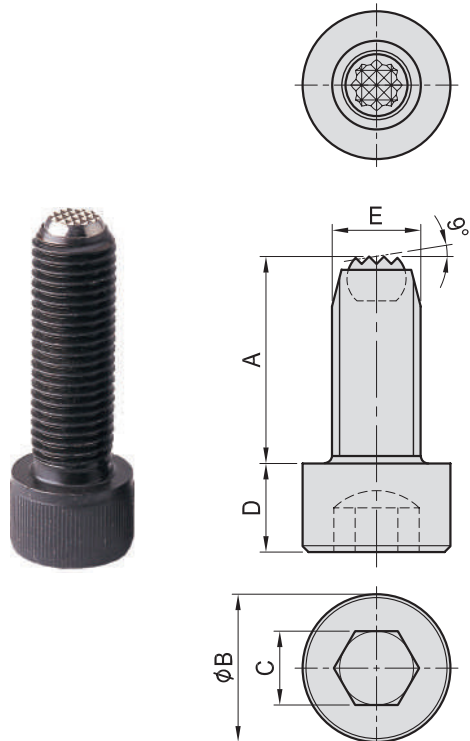


AT16-C

動向鋼珠螺桿 SWIVEL CLAMPING SCREW

MODEL NO.	A	B	C	max (KN)	g
AT16C-0610	10.3	M6	3	9	1.5
AT16C-0615	13.0				2.4
AT16C-0616	16.3				2.4
AT16C-0620	20.3				3.0
AT16C-0625	23.0				3.8
AT16C-0812	11.2	M8	4	15	3.2
AT16C-0816	16.4				4.1
AT16C-0820	19.2				5.8
AT16C-0825	25.4				7.3
AT16C-0830	29.2				9.0
AT16C-1014	14.0	M10	5	20	5.0
AT16C-1015	15.0				6.7
AT16C-1020	20.0				8.7
AT16C-1025	25.0				11.2
AT16C-1030	30.0				13.7
AT16C-1035	35.0				16.2
AT16C-1040	40.0	18.7			
AT16C-1218	17.0	M12	6	30	10.0
AT16C-1220	22.0				12.5
AT16C-1230	30.0				20.0
AT16C-1240	40.0				30.0
AT16C-1250	50.0				40.0
AT16C-1625	24.0	M16	8	60	28.0
AT16C-1635	34.0				40.0
AT16C-1645	44.0				45.0
AT16C-1655	54.0				55.0
AT16C-1665	64.0				65.0
AT16C-2030	30.0	M20	10	90	54.0
AT16C-2040	40.0				74.0
AT16C-2050	50.0				94.0
AT16C-2060	60.0				120.0
AT16C-2090	90.0				170.0
AT16C-2435	35.0	M24	12	120	90.0
AT16C-2450	50.0				130.0
AT16C-2480	80.0				235.0

AT17C 齒型
SERRATED END



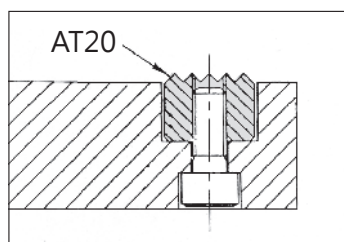
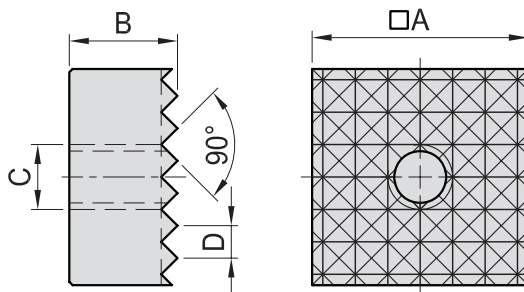
AT17-C
動向鋼珠螺桿
SWIVEL SHOULDER CLAMPING SCREW

MODEL NO.	A	B	C	D	E	max (KN)	g
AT17C-0615	14	10	5	6	M 6	9	5.3
AT17C-0625	23						7.4
AT17C-0635	33						9.5
AT17C-0820	18	13	6	8	M 8	15	13.5
AT17C-0830	28						20.0
AT17C-0840	38						24.0
AT17C-0850	50						30.0
AT17C-1025	24						26.0
AT17C-1040	39	16	8	10	M10	20	34.0
AT17C-1060	59						46.0
AT17C-1230	30						40.0
AT17C-1245	45	18	10	12	M12	30	50.0
AT17C-1265	65						70.0
AT17C-1280	80						83.0
AT17C-1640	39	24	14	16	M16	60	90.0
AT17C-1650	49						110.0
AT17C-1665	64						130.0
AT17C-1690	89						170.0
AT17C-20050	50	30	17	20	M20	90	185.1
AT17C-20080	80						256.4
AT17C-20100	100						301.2
AT17C-24060	60	36	19	24	M24	120	324.8
AT17C-24090	90						283.5
AT17C-24120	120						351.0

AT20
齒型支持件 GRIPPER PAD(SQUARE)



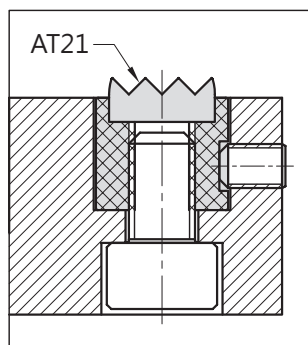
- 材質：SKH9
- 熱處理：HRC 60°
- 表面：染黑處理
- 用途：支持黑皮面工件用



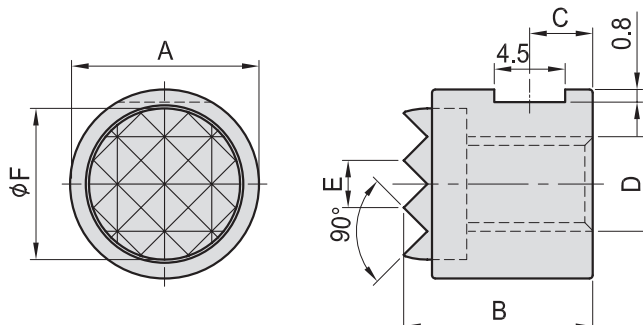
MODEL NO.	A	B	C	D	kg
AT20-1010	10	10	M5	2.3	0.008
AT20-1210	12				0.010
AT20-2010	20	10	M6	3.0	0.030
AT20-2510	25				0.043



- 材質：本體 S45C
- 熱處理：本體 HRC 33°
- 表面：染黑處理
- 用途：支持黑皮面之工件



AT21 齒型支持件 GRIPPER PAD(ROUND)



MODEL NO.	A	B	C	D	E	F	kg
AT21-1010	10	10.0	3.4	M5	2.3	8.1	0.005
AT21-1212	12	12.0	4.0	M6	3.0	9.6	0.008
AT21-1612	16					13.0	0.016
AT21-2012	20	12.0	4.0	M6	3.0	16.3	0.025
AT21-2512	25					19.5	0.040

- 齒盤
- 材質：SKH9
 - 熱處理：HRC 60°
 - 表面：染黑處理

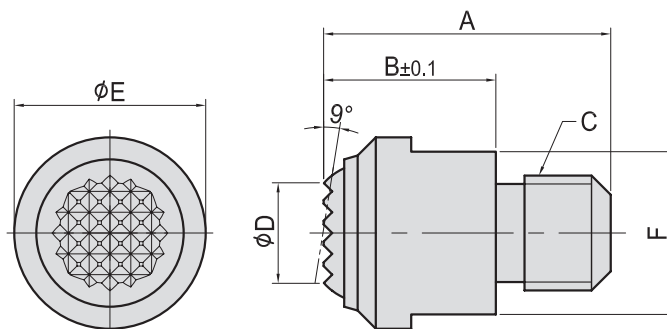
MODEL NO.	A	B	C	D	E	F	kg
AT21-1010-K	10	10.0	3.4	M5	2.3	8.1	0.005
AT21-1212-K	12	12.0	4.0	M6	3.0	9.6	0.008
AT21-1612-K	16					13.0	0.016
AT21-2012-K	20	12.0	4.0	M6	3.0	16.3	0.025
AT21-2512-K	25					19.5	0.040

- 齒盤
- 材質：錫鋼
 - 表面：染黑處理



- 材質：本體 S45C
鋼珠 SUJ2
- 熱處理：本體 HRC 28°~32°
鋼珠 HRC 62°
- 表面：染黑處理
- 用途：適用於支持或挾持工件之斜面上使其不易變形

AT51 齒面動向鋼珠定位螺桿 SMOOTH BALL END BOLT



MODEL NO.	A	B	C	D	E	F	max (KN)	g
AT51-0613	21	13	M6x1.00	7.2	13	11	10	12
AT51-0813	21	13	M8x1.25	7.2	13	11	10	13
AT51-0818	28	18		10.5	20	17	25	38
AT51-1018	28	18	M10x1.50	10.5	20	17	25	40
AT51-1218	30		M12x1.75					
AT51-1627	43	27	M16x2.00	20.0	30	27	90	150
AT51-2035	55	35	M20x2.50	34.5	50	41	165	520

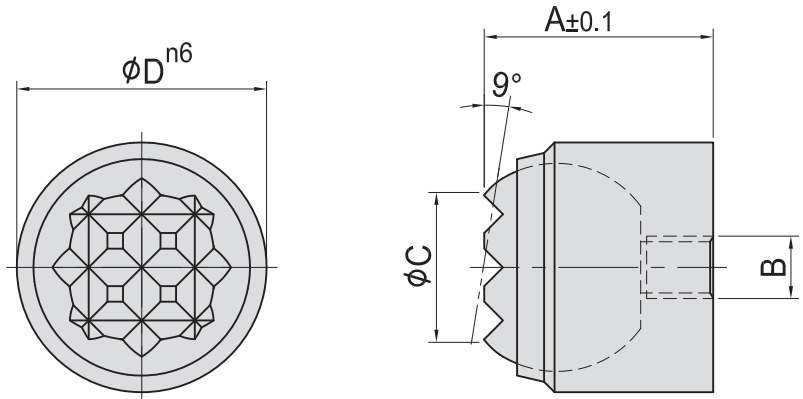
※ 只適用於當需要最小孔深時



- 材質：本體 S45C
鋼珠 SUJ2
- 熱處理：本體 HRC 28°~32°
鋼珠 HRC 62°
- 表面：染黑處理
- 用途：適用於支持或挾持工件之斜面上使其不易變形

AT53

齒面動向鋼珠支持件 SMOOTH BALL END BOLT



MODEL NO.	A	B	C	D	max (kN)	g
AT53-0311	11	M3x0.5	7.2	12	10	8
AT53-0417	17	M4x0.7	10.5	18	25	30
AT53-0525	25	M5x0.8	20.0	28	90	80

※只適用於當需要最小孔深時