



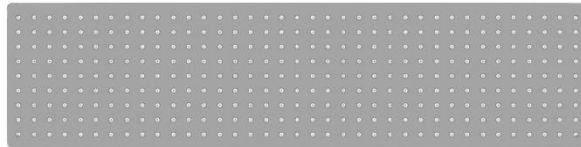
AVG Vacuum Pads Area Gripping

Built-in vacuum generator/fluid valve
Suitable for PCB board suction
Customizable dimensions as per requirements



Features

- Suitable for grasping workpieces with a porous structure and effective grasping in the presence of partial leakage.
- Aluminum oxide body with wear-resistant EPDM material sealing gasket.
- The suction cup bottom features a compact hole pattern design.



Technical parameters

Model	Vacuum flow rate L/min	Air consumption L/min	Noise level dB	weight g
AVG 300X80	700	200	70以下	950
AVG 212X70	400	200	70以下	700

Order Code

AVG **300X80** **-** **L** **-** **FB** **-** **5H** **-** **A**

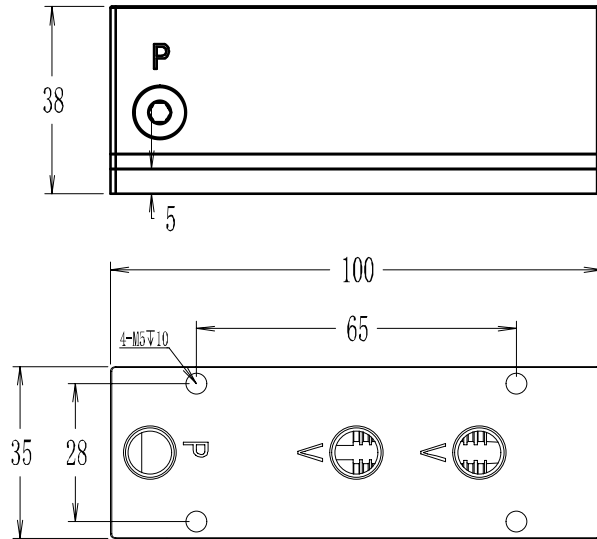
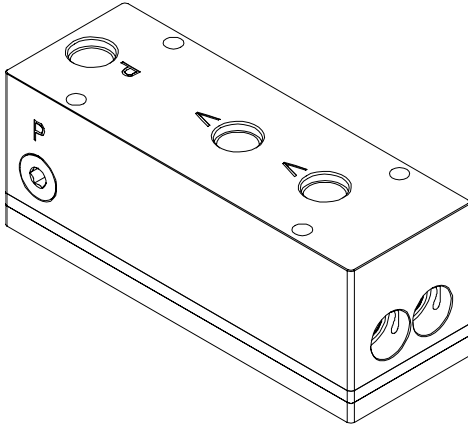
① ② ③ ④ ⑤ ⑥

① Model	② Specifications and dimensions Length and width: 100X35MM 300X80MM 100X70MM 212X70MM 150X150MM	③ Valve body technology Fluid valve
④ Suction hole type P8-standard FB-customization	⑤ Sealing gasket thickness type thickness: 5mm	⑥ Vacuum source type A:Built-in vacuum generator



Dimensions

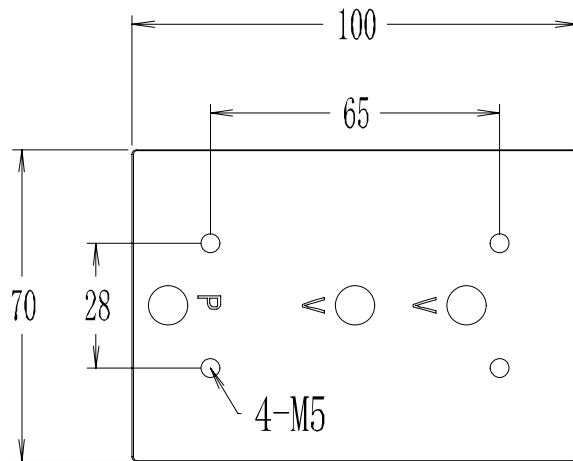
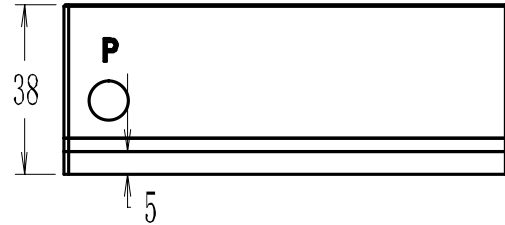
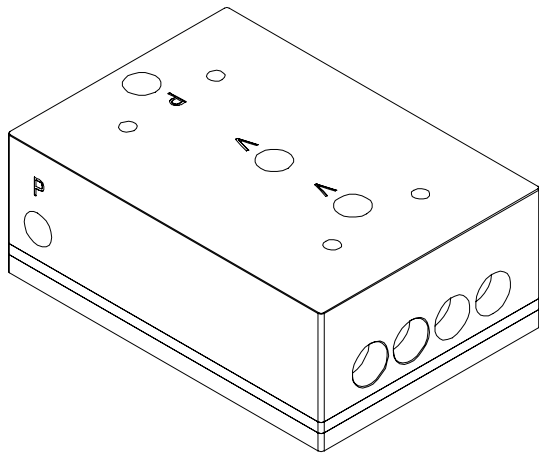
■ AVG 100X35L-P8-5H-A



Supply Air Pressure Mpa	Air Consumption L/min	Maximum Vacuum Flow L/min	Vacuum Level bar	Theoretical Suction Force Kg	Safety Factor	Weight kg
0.4~0.6	50	160	0.5	0.4	3	0.3



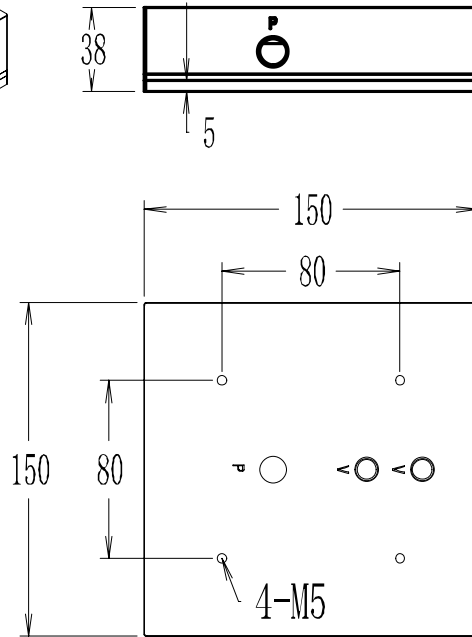
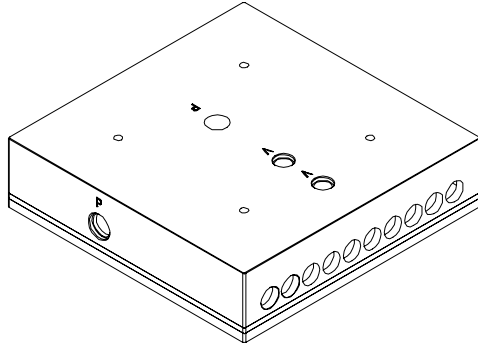
■ AVG 100x70L-P8-5H-A



Supply Air Pressure Mpa	Air Consumption L/min	Maximum Vacuum Flow L/min	Vacuum Level bar	Theoretical Suction Force Kg	Safety Factor	Weight kg
0.4~0.6	100	320	0.5	0.6	3	0.5



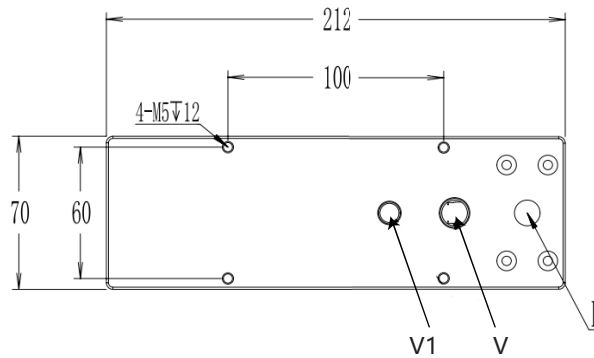
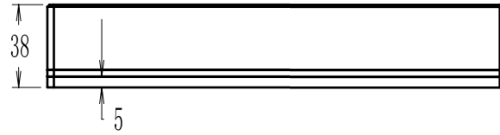
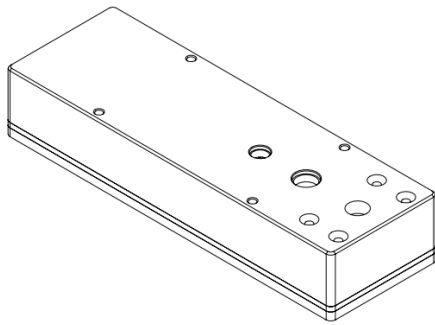
■ AVG 150x150L-P8-5H-A



Supply Air Pressure Mpa	Air Consumption L/min	Maximum Vacuum Flow L/min	Vacuum Level bar	Theoretical Suction Force Kg	Safety Factor	Weight kg
0.4~0.6	250	320	0.5	2.1	3	1.5



■ AVG 212x70L-P8-5H-A



P: 1/4 Supply compressed air to drive vacuum.

V: 1/4 Break the vacuum.

V1: 1/8 Vacuum detection.

■ AVG 300X80L-FB-5H-A

