



GPT

2-Jaw Parallel Gripper

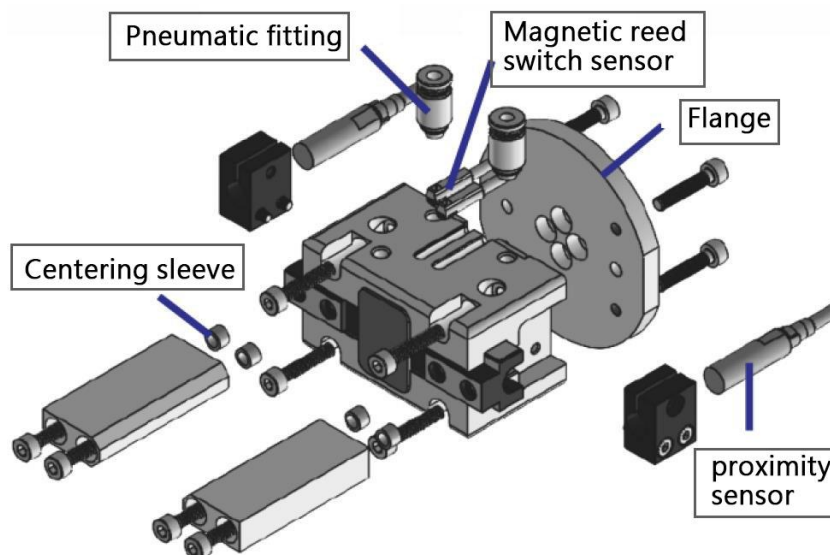


Specification

Model	GPT-204	GPT-206	GPT-208	GPT-210	GPT-212	GPT-216	GPT-220	GPT-230
Stroke per jaw (mm)	4	6	8	10	12	16	20	30
Closing force (N)	145	255	470	630	1100	1580	2700	5680
Opening force (N)	157	275	510	675	1165	1670	2830	5810
Closing/opening Time (s)	0.02/0.02	0.03/0.03	0.04/0.04	0.07/0.07	0.1/0.1	0.1/0.1	0.35/0.35	0.4/0.4
Max. pressure (bar)	6	6	7	7	7	7	8	8
Min. pressure (bar)	3	3	3	3	3	3	3	3
Compressed air consumption (cm ³)	3.5	10.5	22.5	41.5	85	85	330	1000
Weight(kg)	0.15	0.28	0.55	0.9	1.55	2.95	5.55	14.3
Recom. work piece weight(kg)	0.75	1.2	2.3	3.1	5.3	7.7	13	28

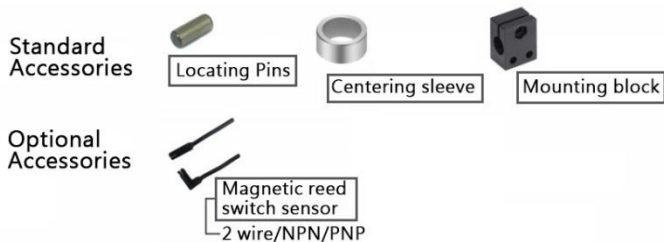
Model	GPT-208-S	GPT-210-S	GPT-212-S	GPT-216-S	GPT-220-S	GPT-230-S
Stroke per jaw (mm)	4	5	6	8	10	15
Closing force (N)	1050	1410	2460	3540	6020	12670
Opening force (N)	1125	1510	2600	3730	6320	12970
Closing/opening Time (s)	0.04/0.04	0.07/0.07	0.1/0.1	0.1/0.1	0.35/0.35	0.4/0.4
Max. pressure (bar)	7	7	7	7	8	8
Min. pressure (bar)	3	3	3	3	3	3
Compressed air consumption (cm ³)	22.5	41.5	85	85	330	1000
Weight(kg)	0.55	0.9	1.55	2.95	5.55	14.3
Recom. work piece weight(kg)	5.1	7	12	17	29	62

Installation exploded diagram



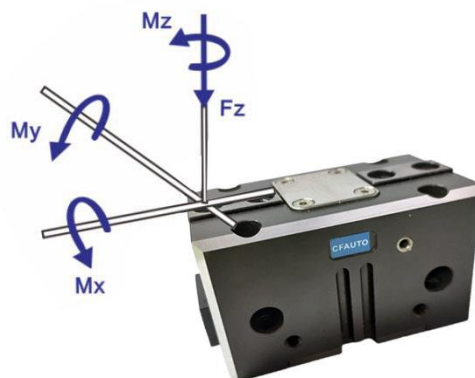
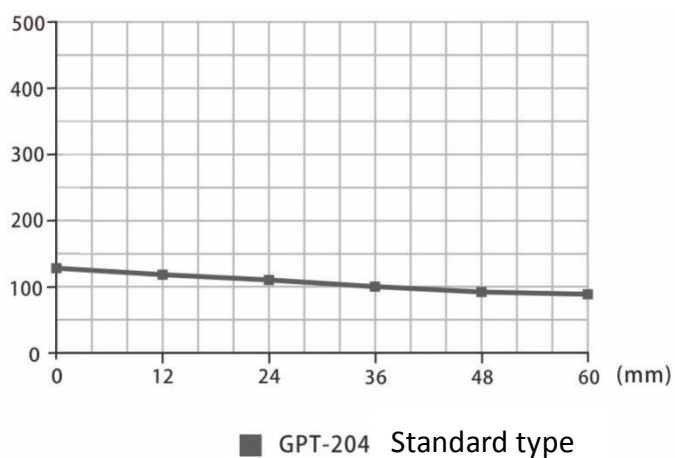


GPT-204



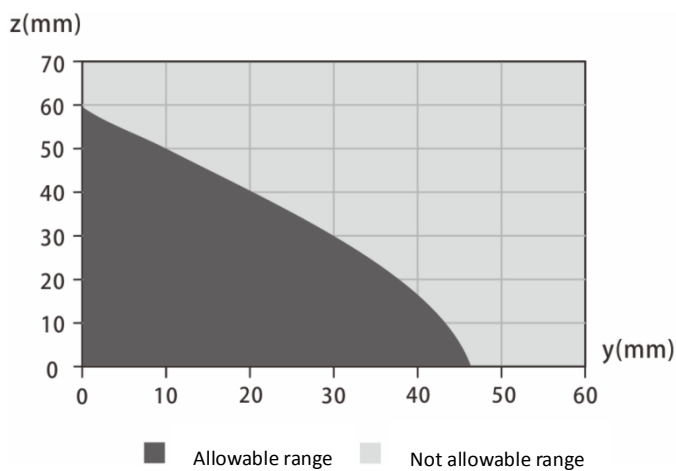
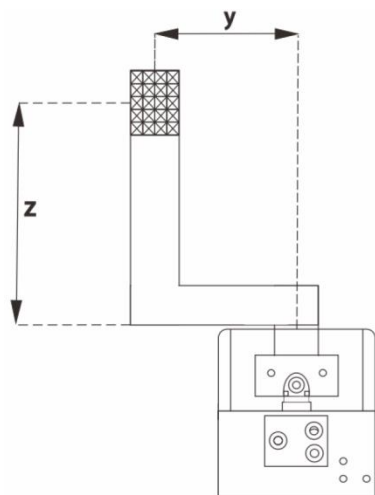
※This model is not compatible with proximity switch.

Gripping force



- Mx max. 12.0 Nm
- My max. 12.0 Nm
- Mz max. 6.5 Nm
- Fz max. 560.0 N

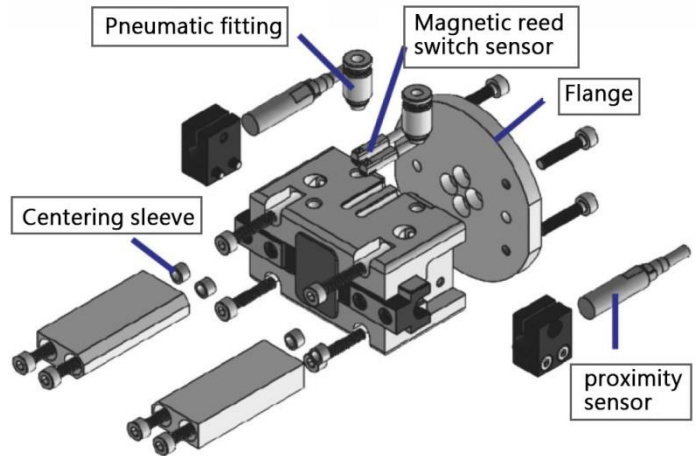
Max permissible centrifugal degree



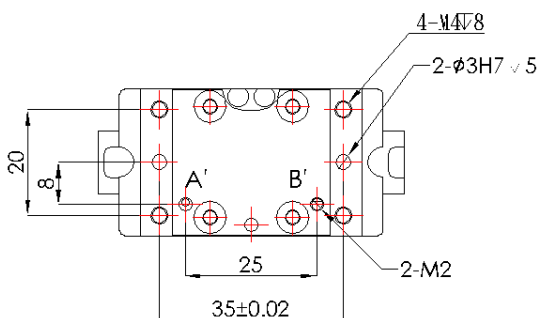
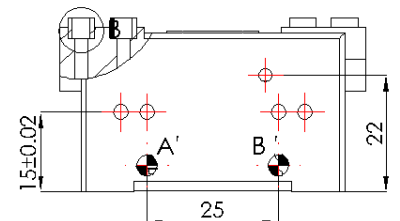
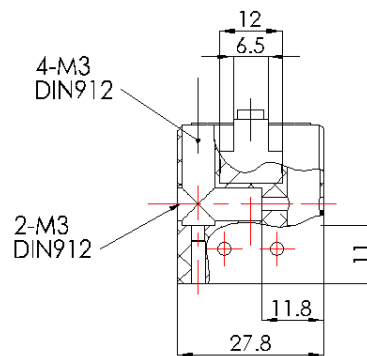
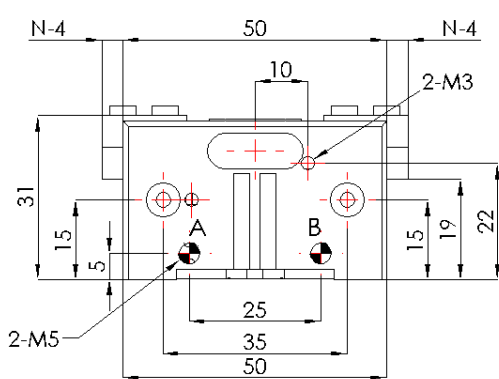
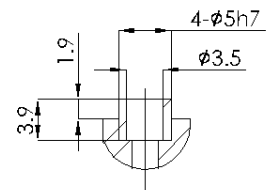
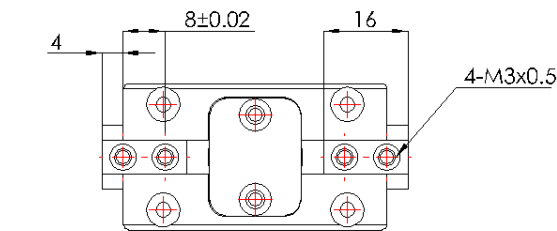
Specification

Model	GPT-204
Stroke per jaw (mm)	4
Closing force (N)	145
Opening force (N)	157
Closing/opening Time (s)	0.02/0.02
Max. pressure (bar)	6
Min. pressure (bar)	3
Compressed air consumption (cm ³)	3.5
Weight(kg)	0.15
Recom. work piece weight(kg)	0.75

Installation exploded diagram



Dimensions



※ This diagram shows the basic dimensions of the main body of the gripper and does not include the dimensions of optional accessories



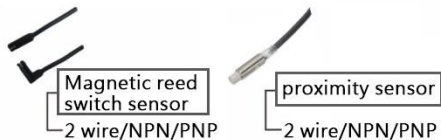
GPT-206



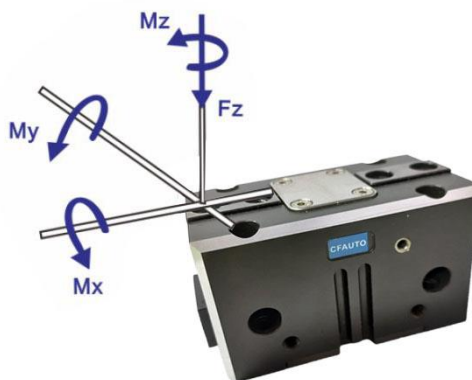
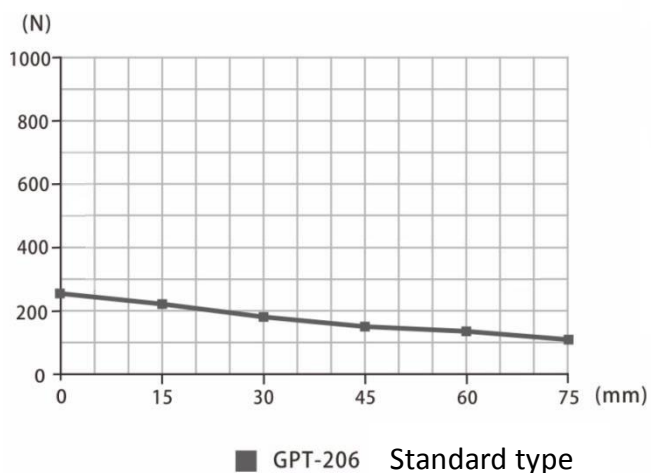
Standard Accessories



Optional Accessories

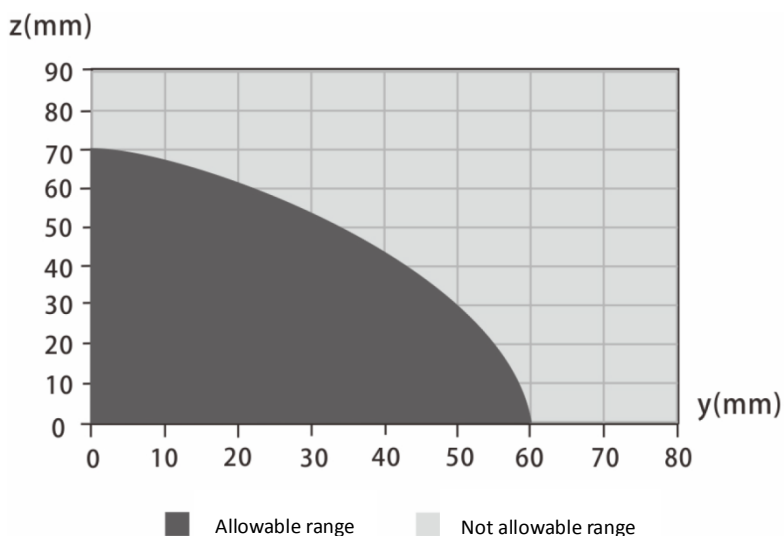
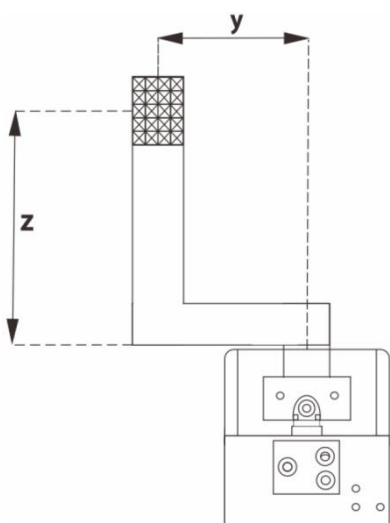


Gripping force



- Mx max. 40.0 Nm
- My max. 36.0 Nm
- Mz max. 28.0 Nm
- Fz max. 960.0 N

Max permissible centrifugal degree

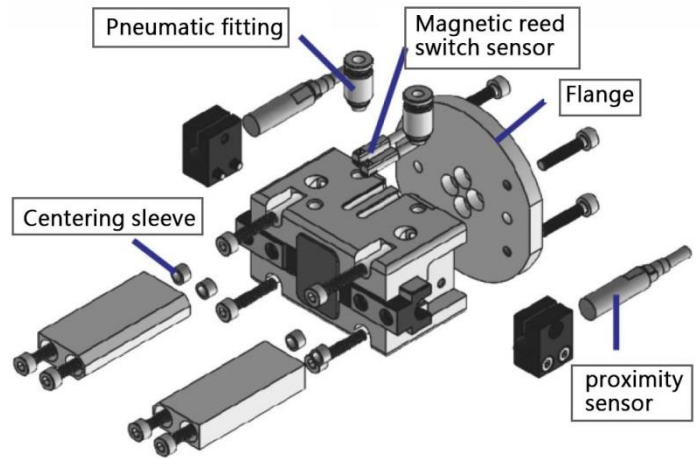




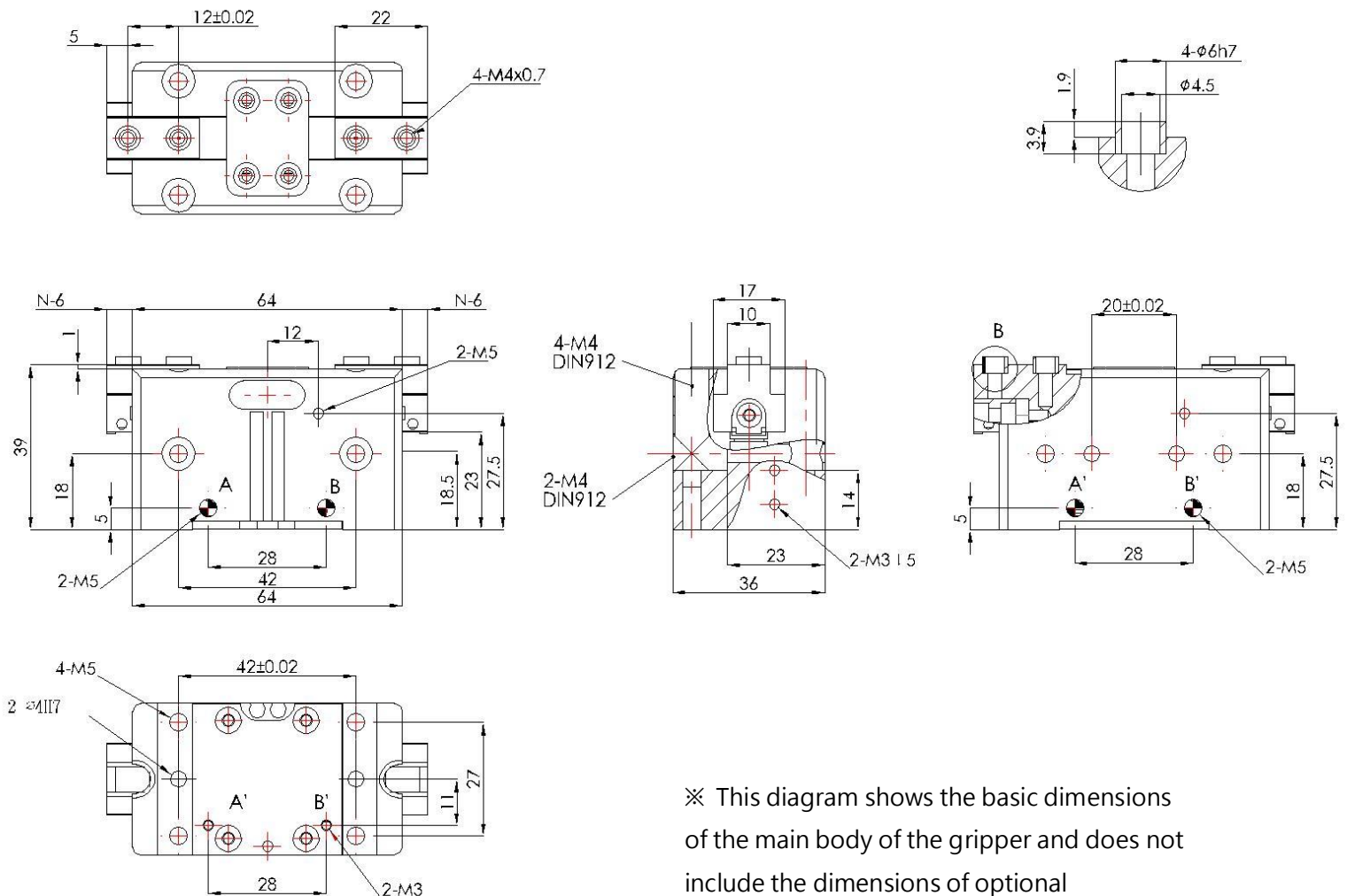
Specification

Model	GPT-206
Stroke per jaw (mm)	6
Closing force (N)	255
Opening force (N)	275
Closing/opening Time (s)	0.03/0.03
Max. pressure (bar)	6
Min. pressure (bar)	3
Compressed air consumption (cm ³)	10.5
Weight(kg)	0.28
Recom. work piece weight(kg)	1.2

Installatio



Dimensions



※ This diagram shows the basic dimensions of the main body of the gripper and does not include the dimensions of optional accessories



GPT-208 / GPT-208-S



Standard Accessories



Optional Accessories

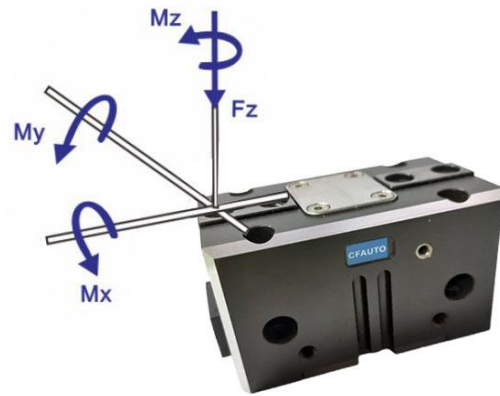
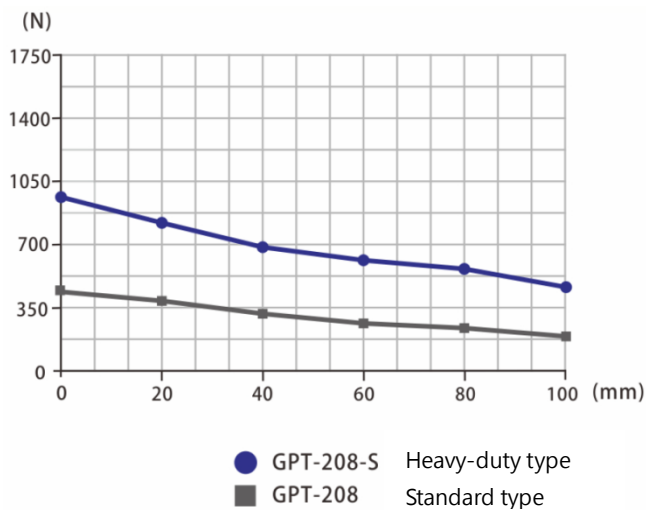


Magnetic reed switch sensor
2 wire/NPN/PNP



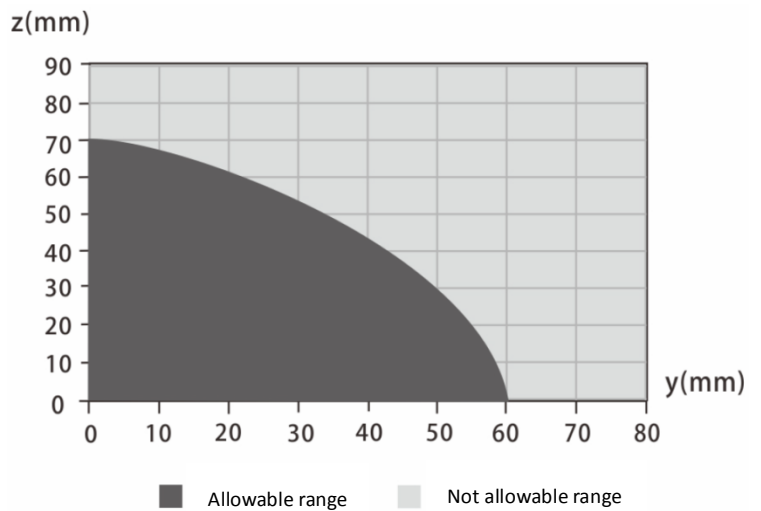
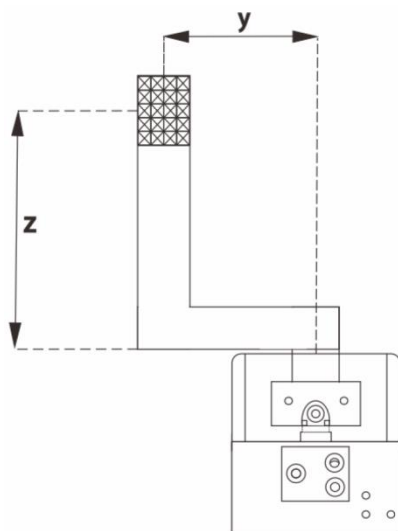
proximity sensor
2 wire/NPN/PNP

Gripping force



- Mx max. 64.0 Nm
- My max. 48.0 Nm
- Mz max. 40.0 Nm
- Fz max. 1440.0 N

Max permissible centrifugal degree

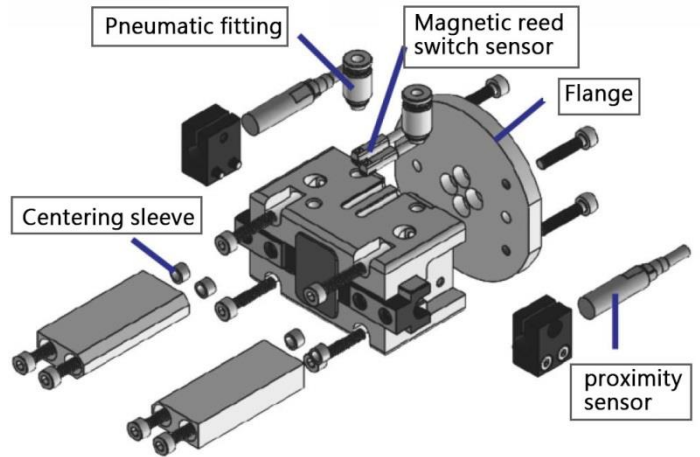




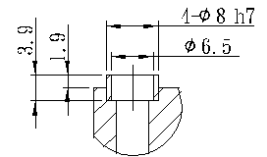
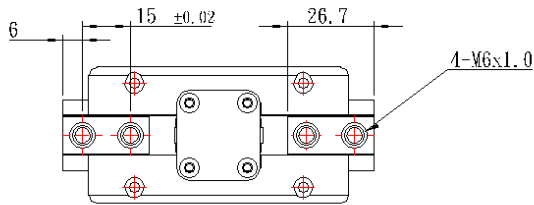
Specification

Model	GPT-208	GPT-208-S
Stroke per jaw (mm)	8	4
Closing force (N)	470	1050
Opening force (N)	510	1125
Closing/opening Time (s)	0.04/0.04	0.04/0.04
Max. pressure (bar)	7	7
Min. pressure (bar)	3	3
Compressed air consumption (cm ³)	22.5	22.5
Weight(kg)	0.55	0.55
Recom. work piece weight(kg)	2.3	5.1

Installatio

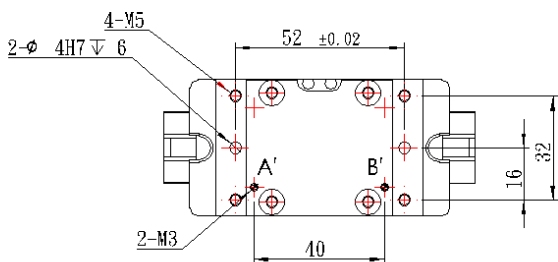
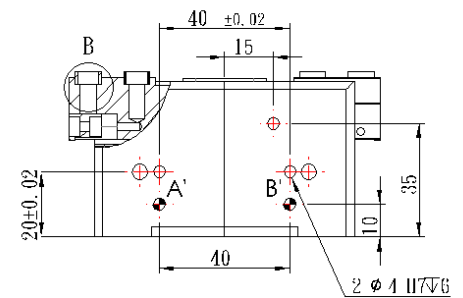
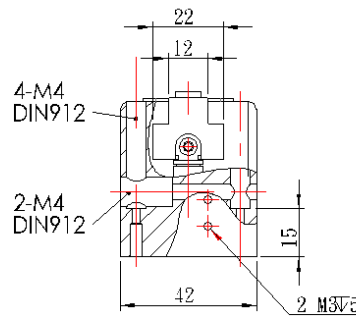
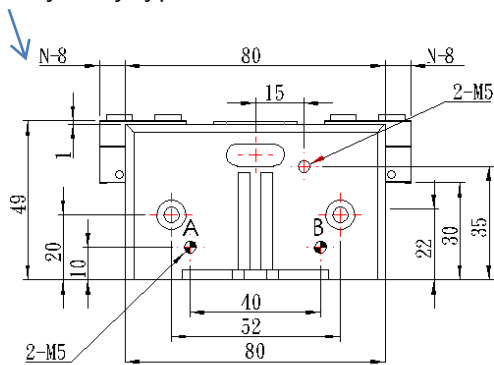


Dimensions



Standard type 8

Heavy-duty type 4



※ This diagram shows the basic dimensions of the main body of the gripper and does not include the dimensions of optional accessories



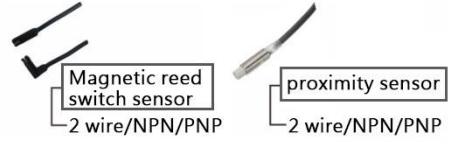
GPT-210 / GPT-210-S



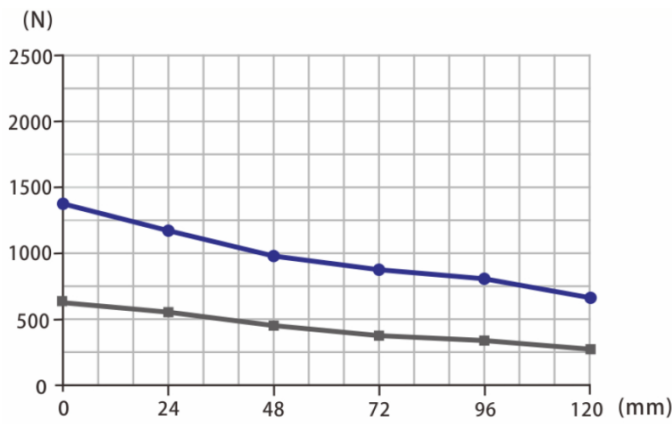
Standard Accessories



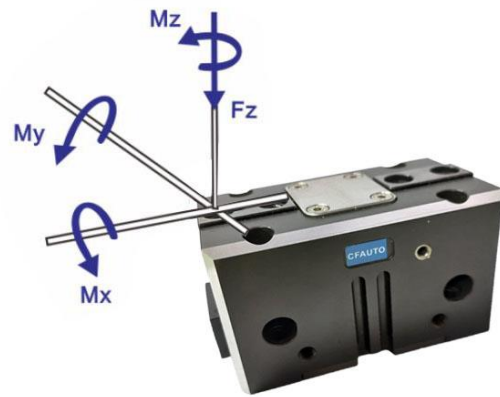
Optional Accessories



Gripping force

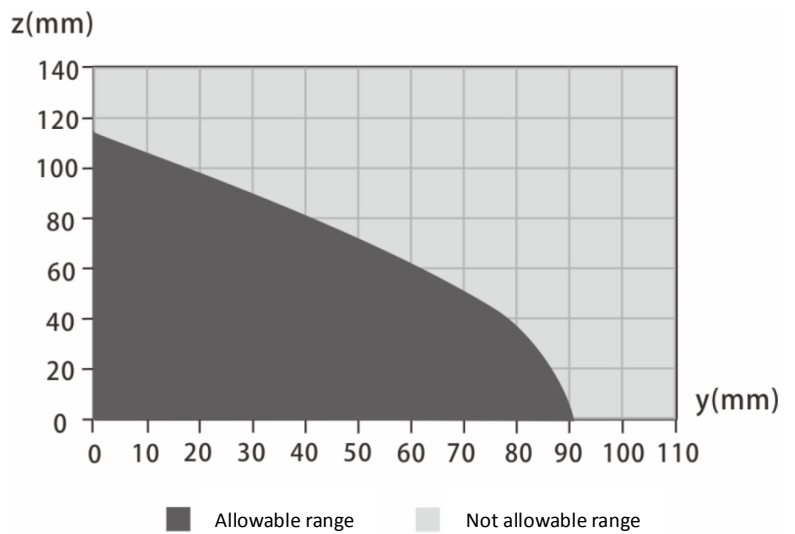
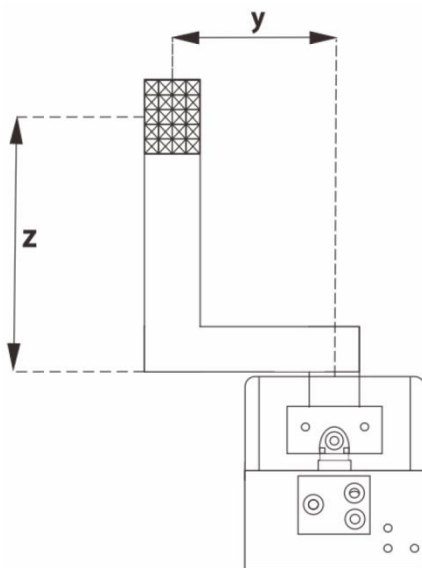


● GPT-210-S Heavy-duty type
■ GPT-210 Standard type



- Mx max. 80.0 Nm
- My max. 72.0 Nm
- Mz max. 60.0 Nm
- Fz max. 2000.0 N

Max permissible centrifugal degree

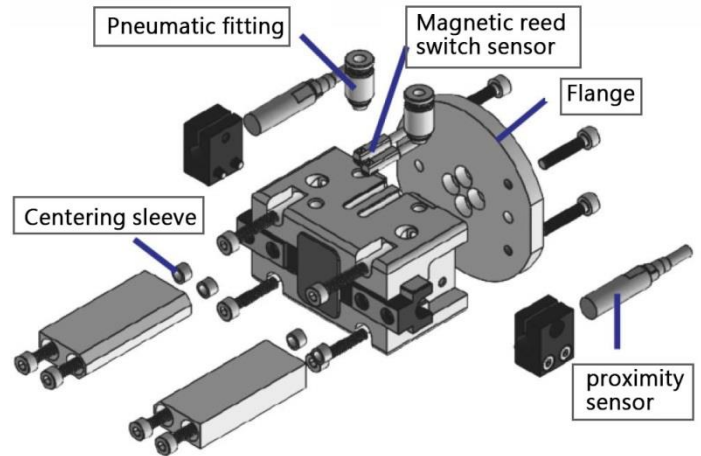




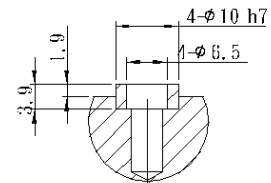
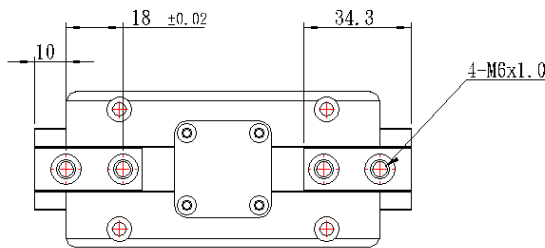
Specification

Model	GPT-210	GPT-210-S
Stroke per jaw (mm)	10	5
Closing force (N)	630	1410
Opening force (N)	675	1510
Closing/opening Time (s)	0.07/0.07	0.07/0.07
Max. pressure (bar)	7	7
Min. pressure (bar)	3	3
Compressed air consumption (cm ³)	41.5	41.5
Weight(kg)	0.9	0.9
Recom. work piece weight(kg)	3.1	7

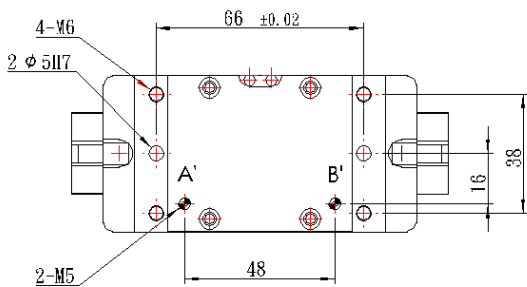
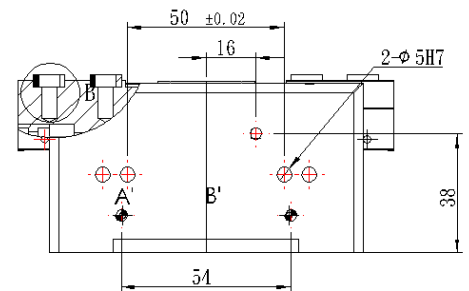
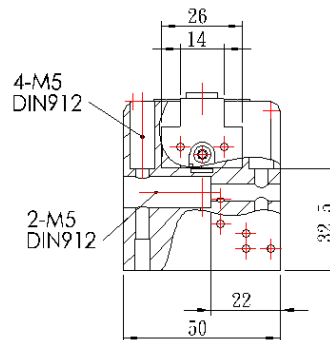
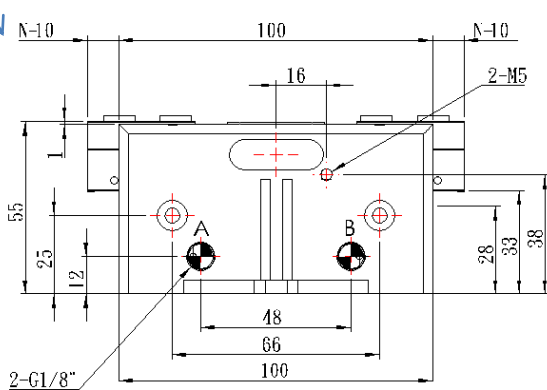
Installatio



Dimensions



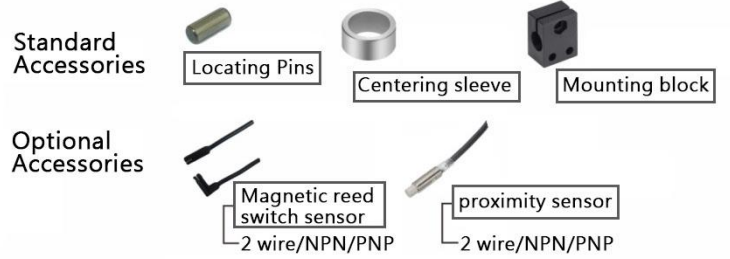
Standard type 10
Heavy-duty type 5



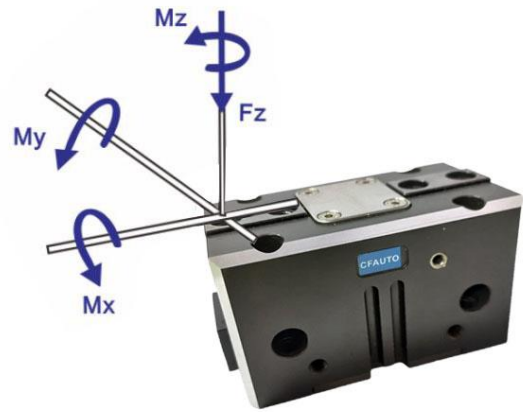
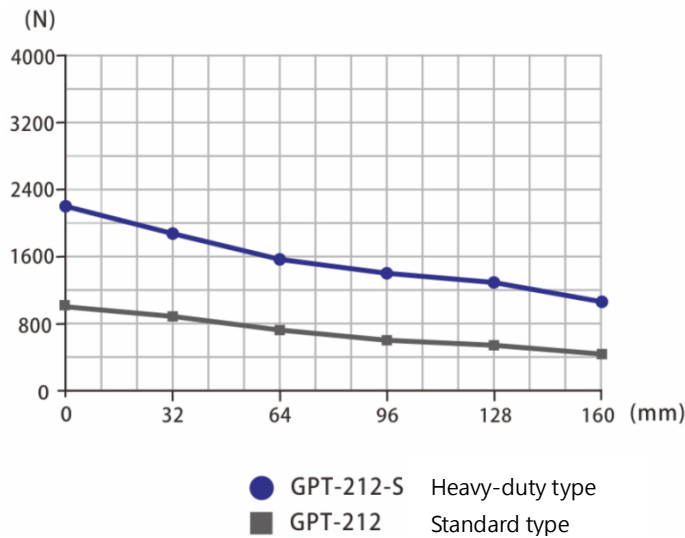
※ This diagram shows the basic dimensions of the main body of the gripper and does not include the dimensions of optional accessories



GPT-212 / GPT-212-S

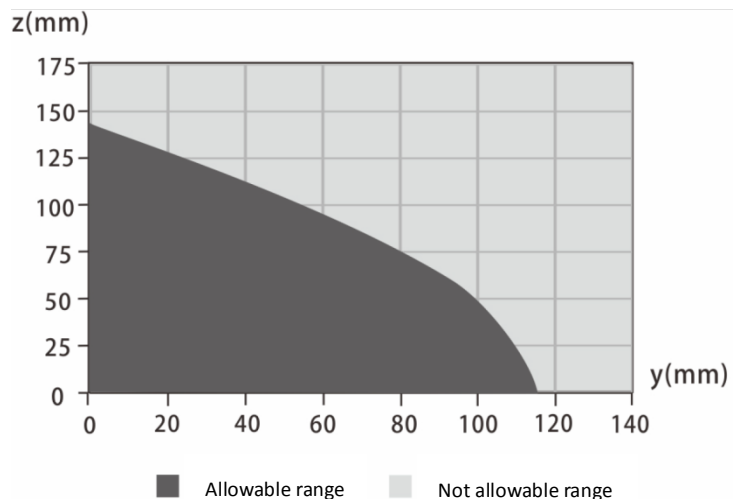
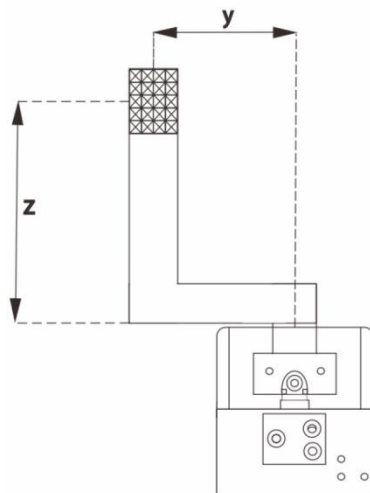


Gripping force



- Mx max. 96.0 Nm
- My max. 96.0 Nm
- Mz max. 80.0 Nm
- Fz max. 2560.0 N

Max permissible centrifugal degree

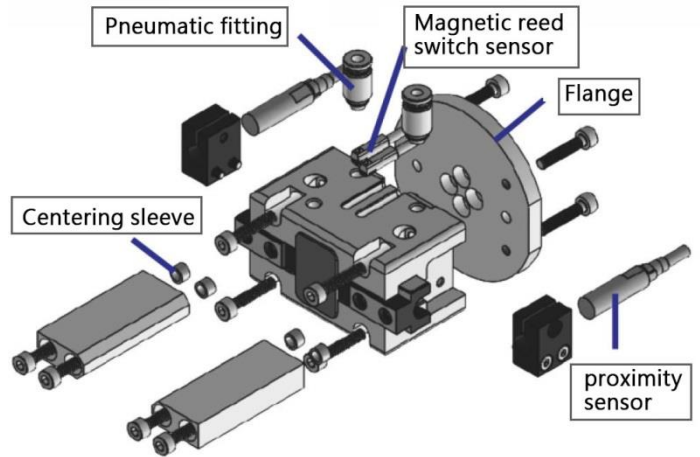




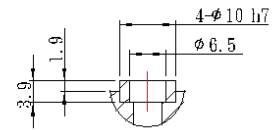
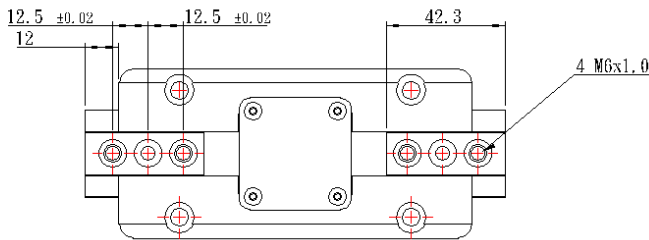
Specification

Model	GPT-212	GPT-212-S
Stroke per jaw (mm)	12	6
Closing force (N)	1100	2460
Opening force (N)	1165	2600
Closing/opening Time (s)	0.1/0.1	0.1/0.1
Max. pressure (bar)	7	7
Min. pressure (bar)	3	3
Compressed air consumption (cm ³)	85	85
Weight(kg)	1.55	1.55
Recom. work piece weight(kg)	5.3	12

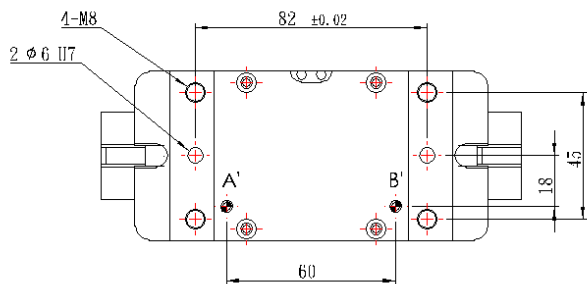
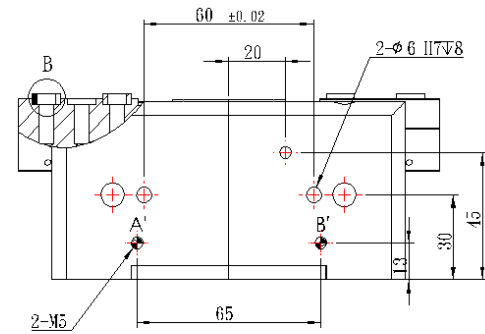
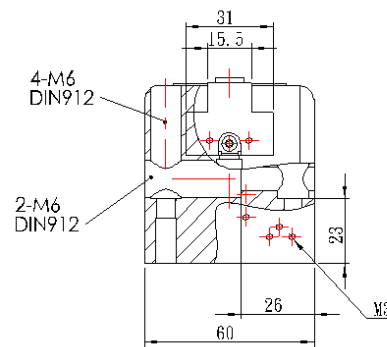
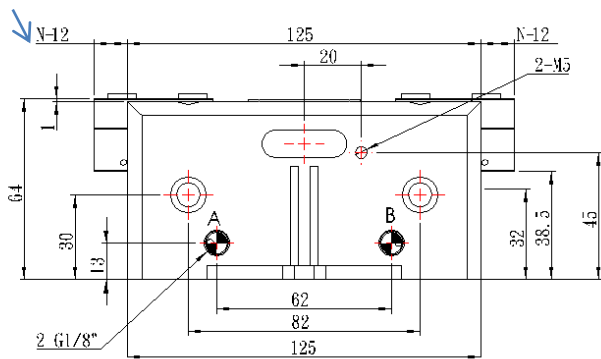
Installatio



Dimensions



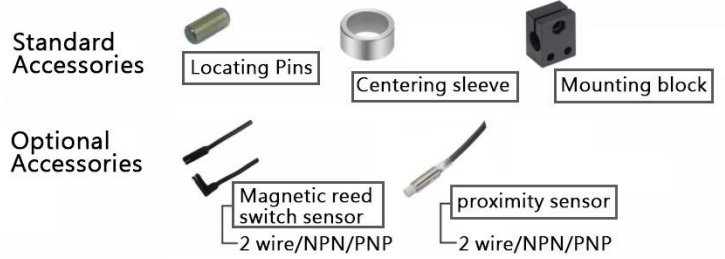
Standard type 12
Heavy-duty type 6



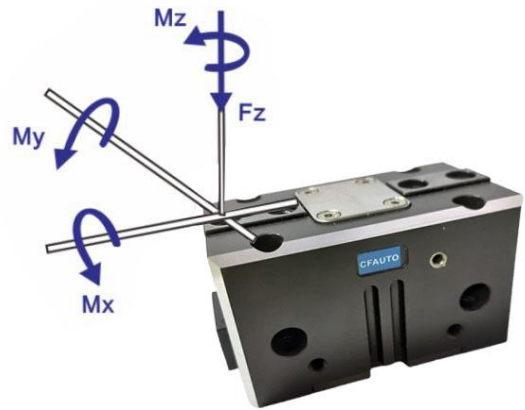
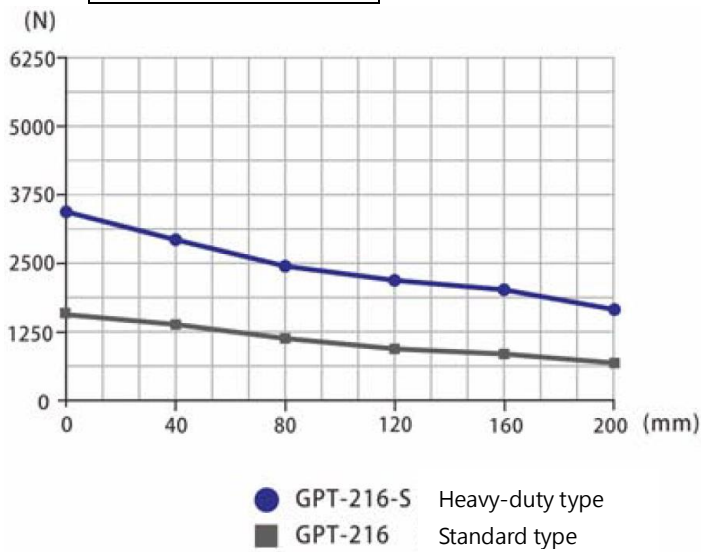
※ This diagram shows the basic dimensions of the main body of the gripper and does not include the dimensions of optional accessories



GPT-216 / GPT-216-S

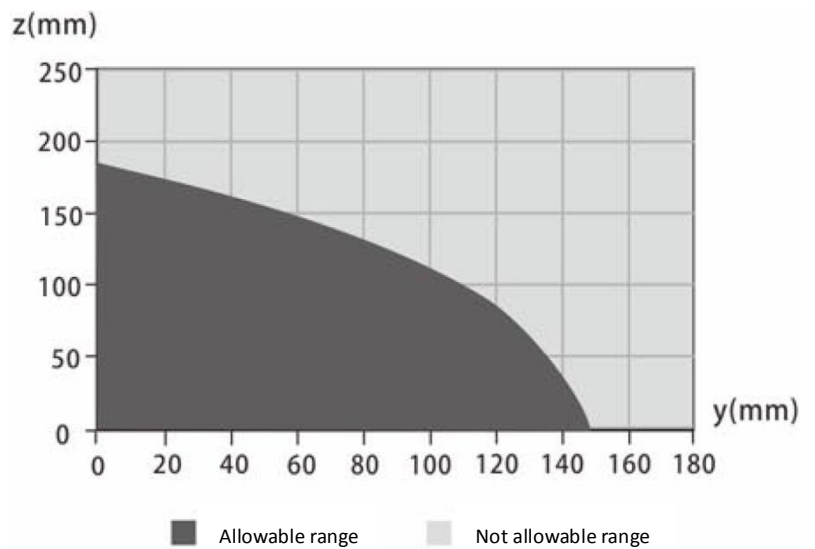
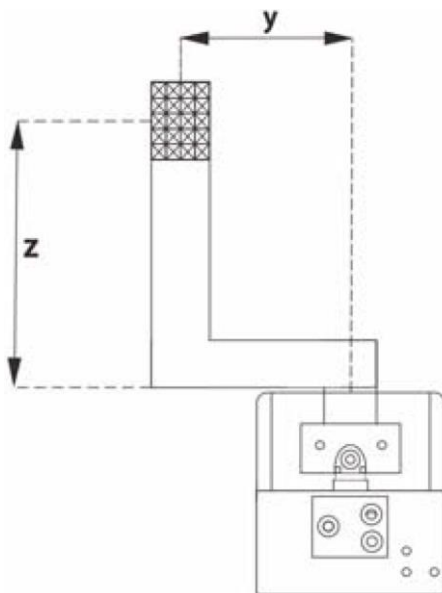


Gripping force



- Mx max. 130.0 Nm
- My max. 145.0 Nm
- Mz max. 110.0 Nm
- Fz max. 4000.0 N

Max permissible centrifugal degree

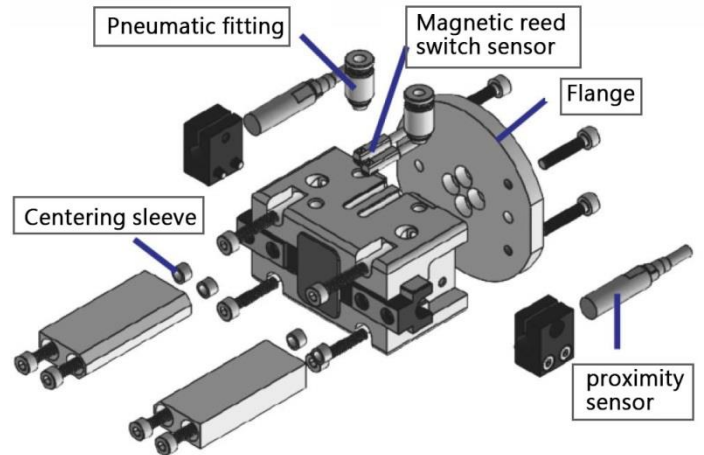




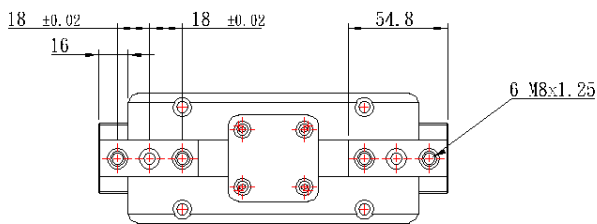
Specification

Model	GPT-216	GPT-216-S
Stroke per jaw (mm)	16	8
Closing force (N)	1580	3540
Opening force (N)	1670	3730
Closing/opening Time (s)	0.1/0.1	0.1/0.1
Max. pressure (bar)	7	7
Min. pressure (bar)	3	3
Compressed air consumption (cm ³)	85	85
Weight(kg)	2.95	2.95
Recom. work piece weight(kg)	7.7	17

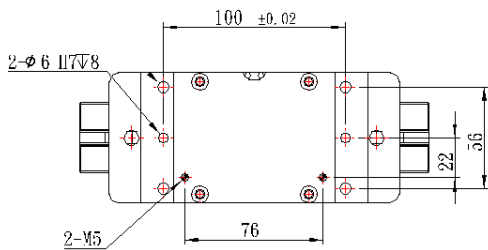
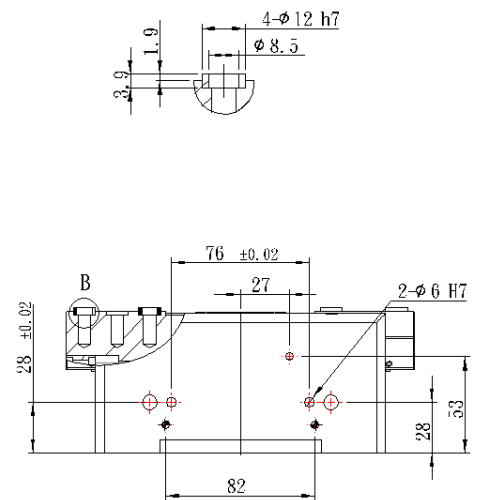
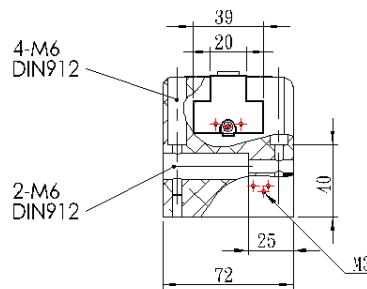
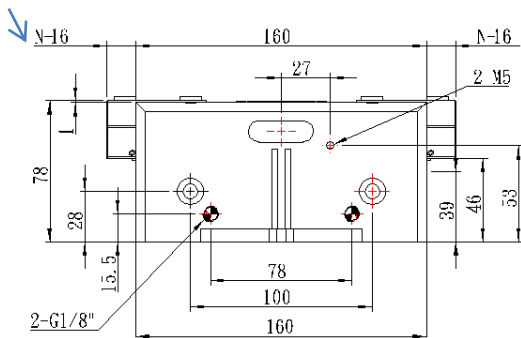
Installatio



Dimensions



Standard type 16
Heavy-duty type 8



※ This diagram shows the basic dimensions of the main body of the gripper and does not include the dimensions of optional accessories



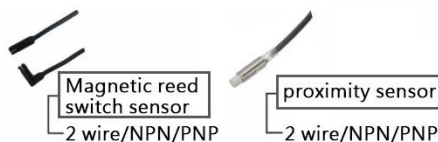
GPT-220 / GPT-220-S



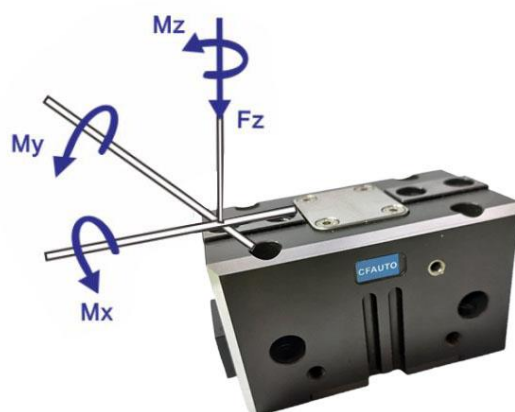
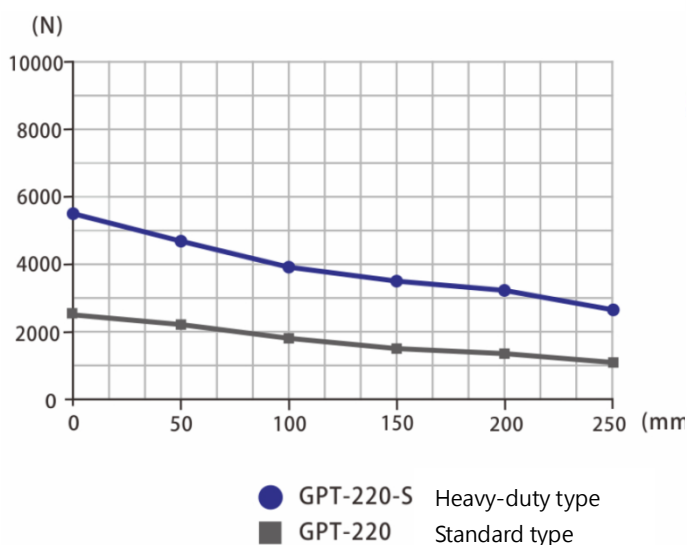
Standard Accessories



Optional Accessories

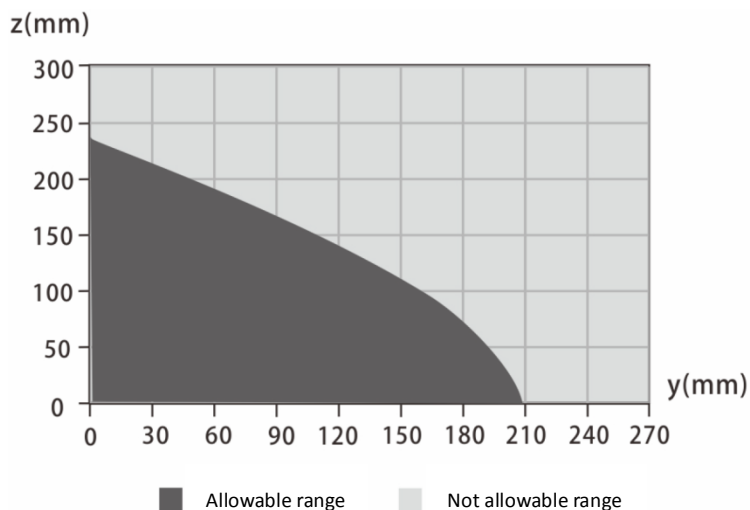
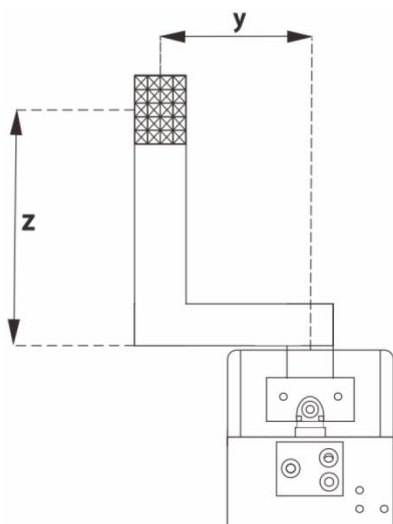


Gripping force



- Mx max. 145.0 Nm
- My max. 175.0 Nm
- Mz max. 135.0 Nm
- Fz max. 5600.0 N

Max permissible centrifugal degree

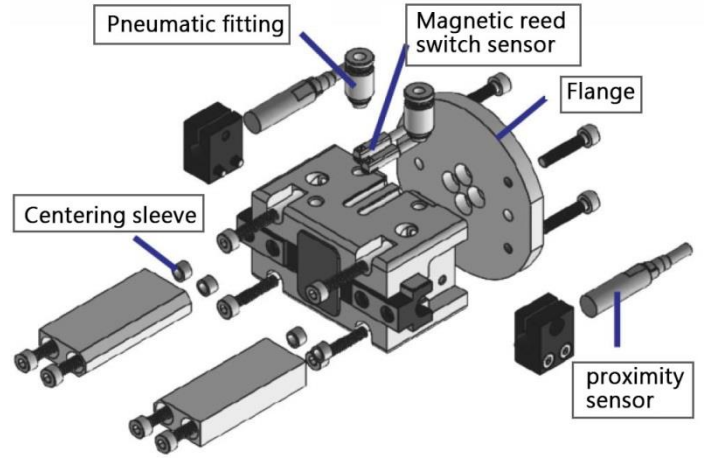




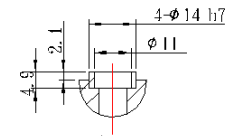
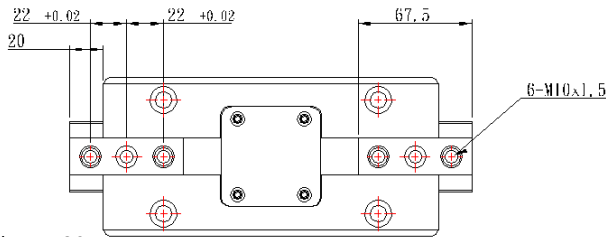
Specification

Model	GPT-220	GPT-220-S
Stroke per jaw (mm)	20	10
Closing force (N)	2700	6020
Opening force (N)	2830	6320
Closing/opening Time (s)	0.35/0.35	0.35/0.35
Max. pressure (bar)	8	8
Min. pressure (bar)	3	3
Compressed air consumption (cm ³)	330	330
Weight(kg)	5.55	5.55
Recom. work piece weight(kg)	13	29

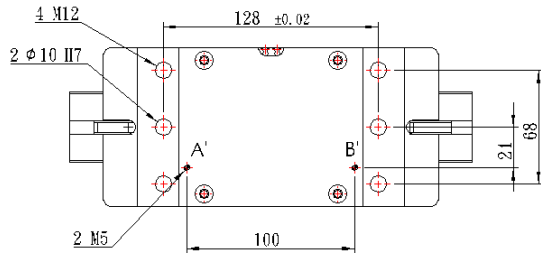
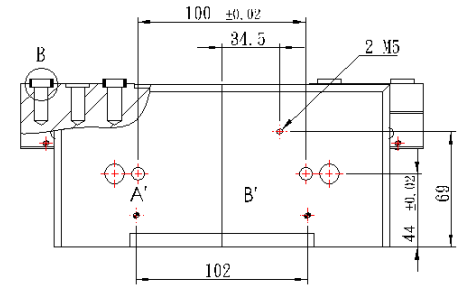
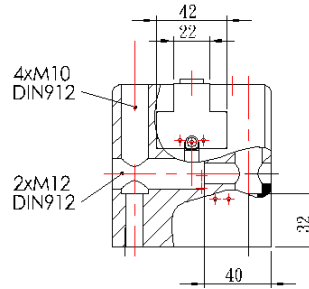
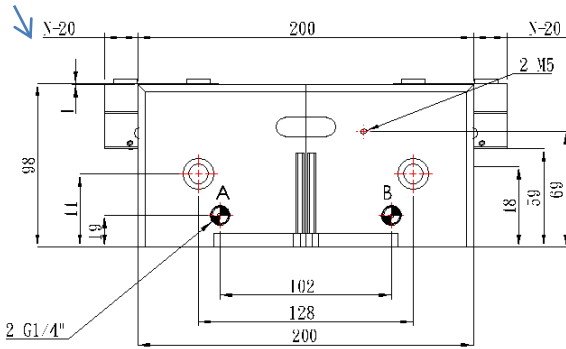
Installatio



Dimensions



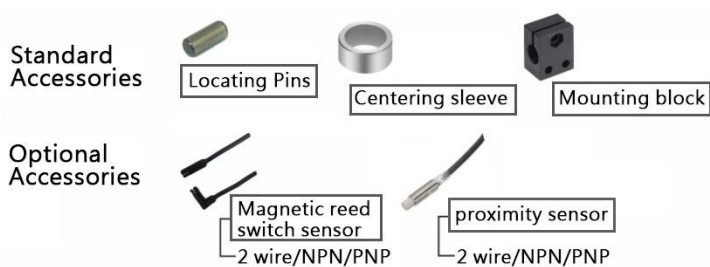
Standard type 20
Heavy-duty type 10



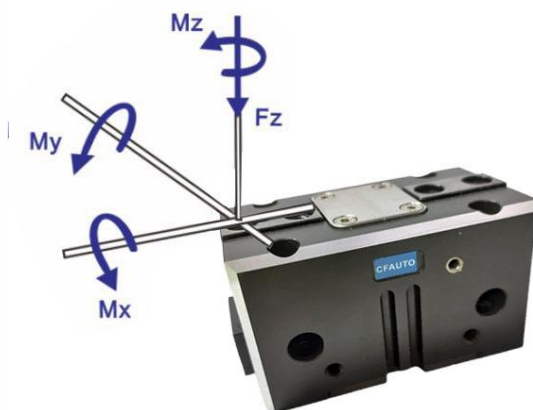
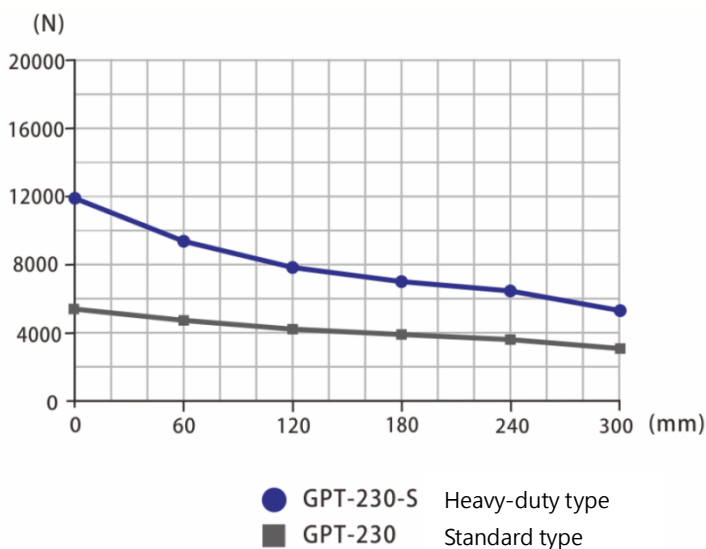
※ This diagram shows the basic dimensions of the main body of the gripper and does not include the dimensions of optional accessories



GPT-230 / GPT-230-S

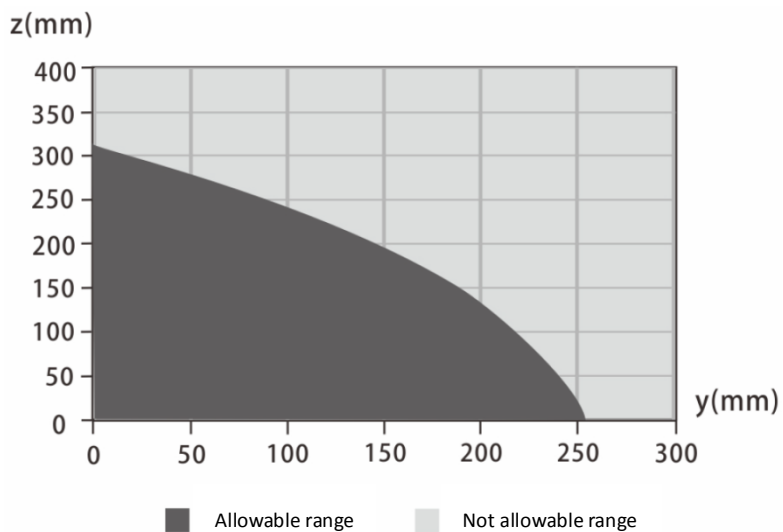
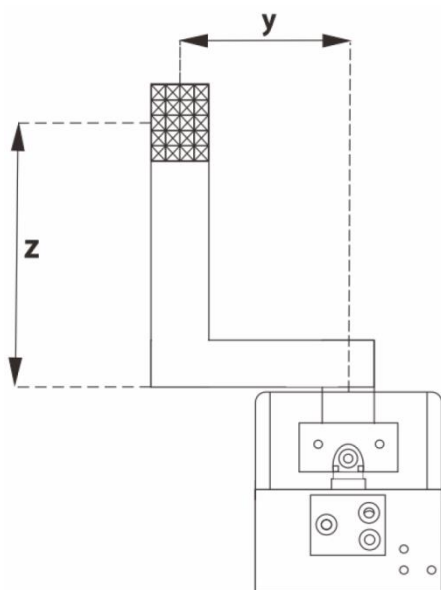


Gripping force



- Mx max. 220.0 Nm
- My max. 240.0 Nm
- Mz max. 160.0 Nm
- Fz max. 7200.0 N

Max permissible centrifugal degree

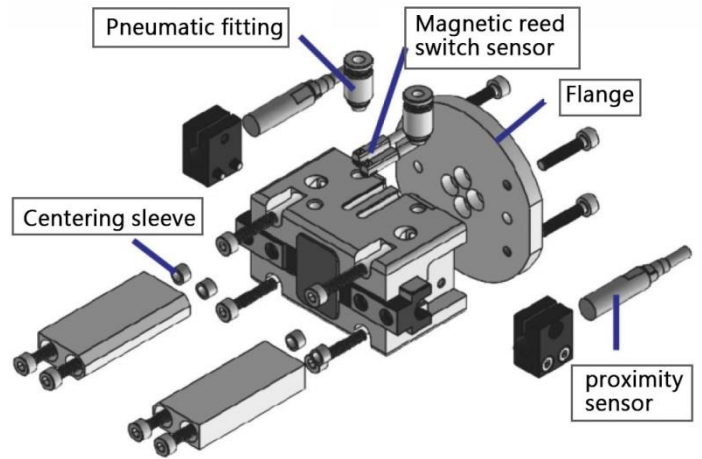




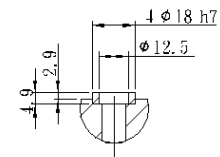
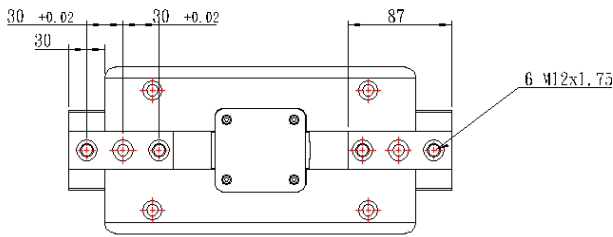
Specification

Model	GPT-230	GPT-230-S
Stroke per jaw (mm)	30	15
Closing force (N)	5680	12670
Opening force (N)	5810	12970
Closing/opening Time (s)	0.4/0.4	0.4/0.4
Max. pressure (bar)	8	8
Min. pressure (bar)	3	3
Compressed air consumption (cm ³)	1000	1000
Weight(kg)	14.3	14.3
Recom. work piece weight(kg)	28	62

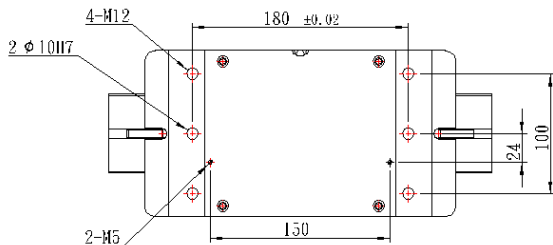
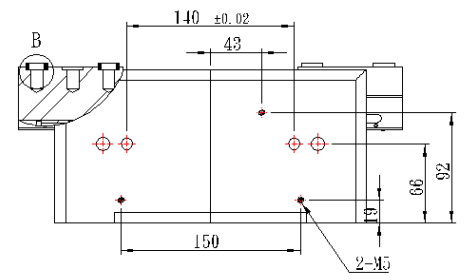
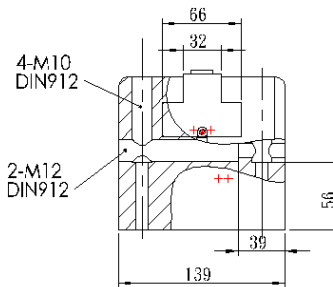
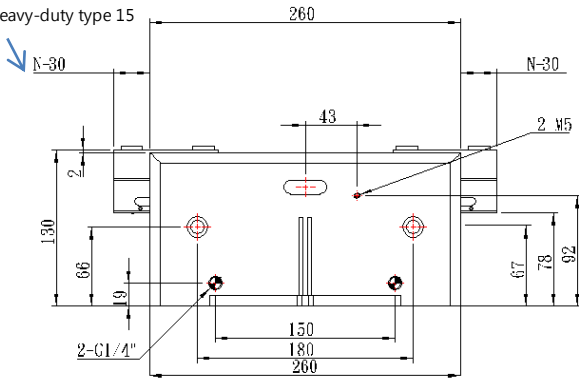
Installatio



Dimensions



Standard type 30
Heavy-duty type 15



※ This diagram shows the basic dimensions of the main body of the gripper and does not include the dimensions of optional accessories