



## KGS

### Vacuum generator



#### Features

- Fast suction speed, high vacuum level, and low air consumption.
- Suitable for workpieces made of non-porous and loosely breathable materials.
- Compact and lightweight design, resistant to dirt and dust, and simple structure.
- Optional external muffler for noise reduction.

#### Advantages

- Efficient and energy-saving vacuum generator that quickly reaches maximum vacuum level.
- Effectively compensates for leakage.
- Can be selected according to different operating conditions.
- Long maintenance intervals, easy cleaning without the need for tools.
- Suitable for use in confined spaces with limited weight, easy installation.
- Significantly reduces product noise.

#### Applications

- Multi-stage vacuum generators are suitable for handling cardboard boxes, packaging materials, and breathable materials.
- Used in conditions that require high vacuum flow, fast suction speed, and low air consumption.



## Structure

Lightweight and compact vacuum generator tube.

(1) Casing, (2) Vacuum tube with different performance parameters for matching.

(3) Gas supply port for direct insertion, horizontal exhaust component with or without muffler.

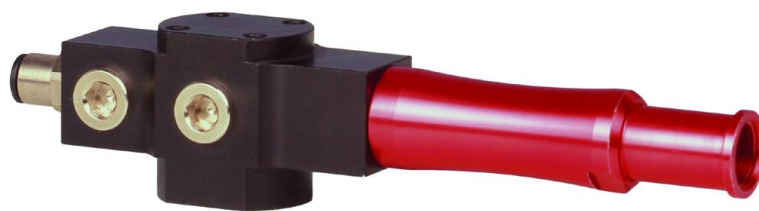
KGS series generators can be directly connected to suction cups.

Standard configuration with A-type mounting thread.



## Features

- Integrates various types of suction cups and modular designs together, greatly simplifying the selection and installation of vacuum systems.
- Offers energy-efficient, highly reliable, and widely distributed vacuum systems.
- Modular design enables quick and convenient installation, ensuring economic efficiency and reliable operation of the vacuum system while providing convenience to customers.
- Energy-efficient, low-noise, high vacuum level, large flow rate, and easy maintenance.



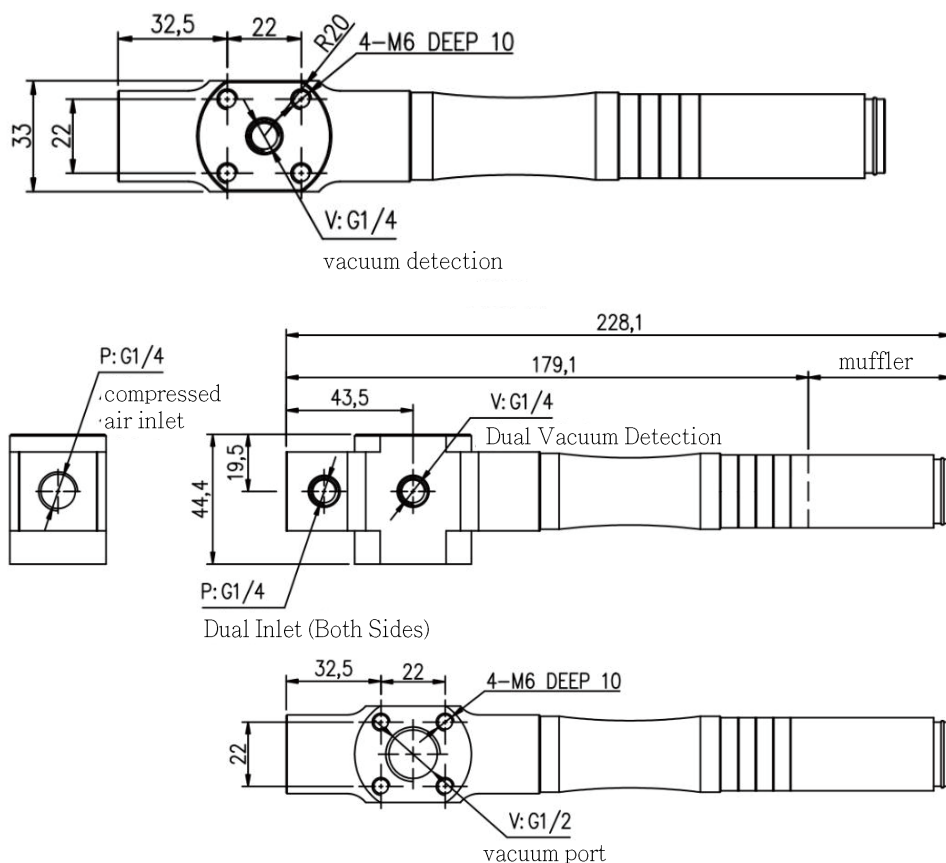
## 性能參數

Model	unit	KGS-5010-HS	KGS-5010-LS
Using fluid		oil-free compressed air	
Ambient temperature	°C	0~60(no freezing)	
Inlet air pressure	Map	0.4~0.6	0.4~0.6
Air consumption	L/Min	100	100
Attained vacuum pressure	-KPa	92	70
Maximum vacuum flow rate	L/Min	350	350
Weight	KG	0.25	0.25

## Order Code

KGS - 5010 - H		S	
series	Model	specs.	silencer
KGS	5010	H:high vacuum L:low vacuum	Blank: No Silencer S : with silencer

## Dimensions



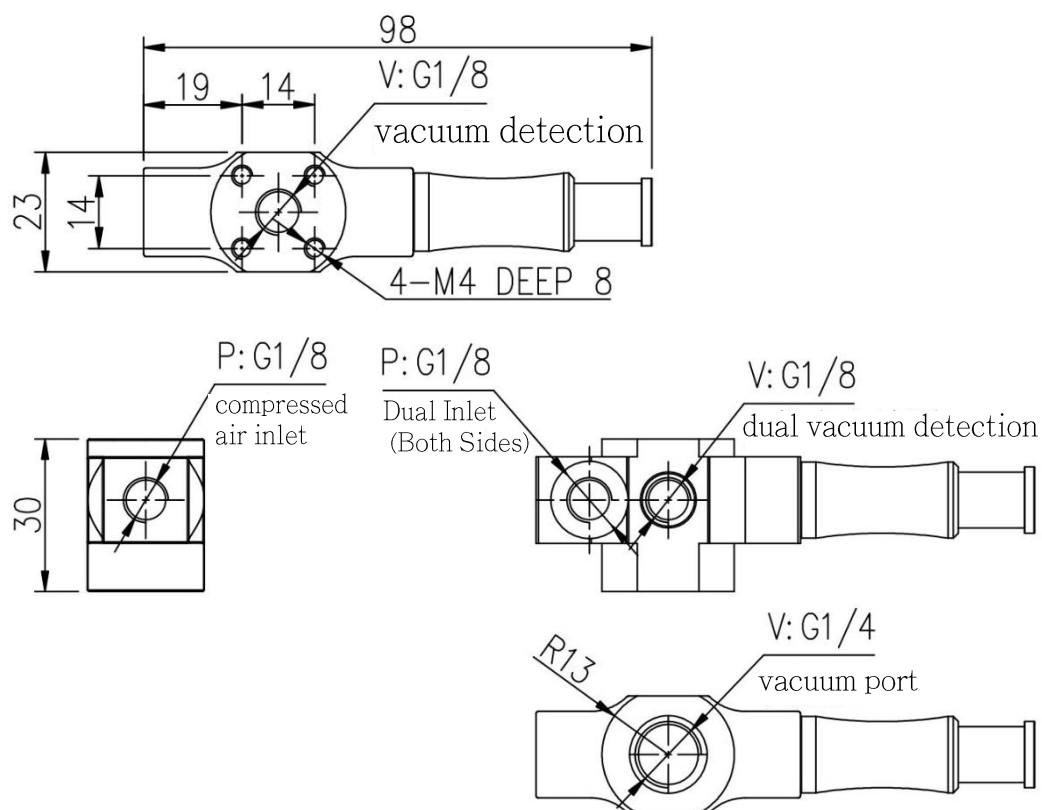
performance parameters

Model	unit	KGS-3010-HS	KGS-3010-LS	
Using fluid		oil-free compressed air		
Ambient temperature	°C	0~60(no freezing)		
Inlet air pressure	Map	0.32	0.6	0.5
Air consumption	L/Min	26.4	26.4	27.6
Attained vacuum pressure	-KPa	90	75	92
Maximum vacuum flow rate	L/Min	84	80	85
Weight	KG	0.25	0.25	0.1

Order Code

<b>KGS</b>	-	<b>3010</b>	-	<b>H</b>	<b>S</b>
series		Model		specs.	silencer
KGS		3010		H:high vacuum L:low vacuum	

Dimensions



performance parameters

Model	unit	KGS-2010-H	KGS-2010-L
Using fluid		oil-free compressed air	
Ambient temperature	°C	0~60(no freezing)	
Inlet air pressure	Map	0.5	0.5
Air consumption	L/Min	27	27
Attained vacuum pressure	-KPa	93	75
Maximum vacuum flow rate	L/Min	40	60
Weight	KG	0.1	0.1

Order Code

<b>KGS</b>	<b>-</b>	<b>2010</b>	<b>-</b>	<b>H</b>
series		Model		specs.
KGS		2010		H:high vacuum L:low vacuum

Dimensions

