

KM/KL/KS vacuum Pumps/Generator Multistage



Features

- Unique patented design, incorporating the latest industry technology.
- Precision-crafted with high-quality plastic polyphenylthiourea casing for superior vacuum performance.
- Suitable for various environments and industries (workpiece suction).
- Pump body structure uses a sliding push assembly, eliminating the need for a connecting rod, making installation convenient.

Performance overview

- Standard supply air pressure: 3.5-6 bar.
- Exhaust noise: 50-60 dB(A).
- Lightweight product with easy installation.
- Energy-saving system (optional).
- Maximum vacuum level: -94 kPa.



Order Code

KM **301** - **D** - **N** - □ - □ - □ - □

① ② ③ ④ ⑤ ⑥ ⑦ ⑧ ⑨

① Model	② Specifications	③ Connection interface size	Air supply port	Vacuum port	Exhaust port
KM-Basic model (-94kPa)	301	D-301~304	G1/4	G3/4	G3/4
	302				
KL-Flow model (-85kPa)	303	B-301~304	NPSF1/4	NPTG3/4	NPTG3/4
	304				
KS-Low vacuum model (-75kPa)	305	D-305~306	G1/4	G1	G1
	306				

④ Sealing material	⑤ Check valve	⑥ Control device	⑦ Pressure gauge types	⑧ Exhaust method
N-Nitrile rubber	Blank - None	Blank - No valve	Blank - Mechanical gauge	Blank - Through-port exhaust
V-Fluoroelastomer	A - Yes	RE-RE supply valve	C- Digital vacuum gauge	P - Side exhaust
S-Silicone rubber		EK-Energy-saving valve ED-Air supply release valve		

performance parameters

KM301~306

Model	Supply pressure (bar)	Maximum vacuum level (-kPA)	Maximum vacuum flow rate (NL/min)	Air consumption (NL/min)	Recommended pipe diameter(Ømm)	
					Air supply port	Vacuum port
KM 301	4.5	94	360	135	8	12
KM 302	4.5	94	700	270	8	15
KM 303	4.5	94	980	405	8	19
KM 304	4.5	94	1380	540	8	25
KM 305	4.5	94	1480	675	10	25
KM 306	5	94	1650	810	10	25

Inflow rates (NL/min) at different vacuum levels (-kPA)

Model	Supply pressure (bar)	Air consumption (NL/min)	Maximum vacuum level (-kPA)										Maximum vacuum level (-kPA)
			0	10	20	30	40	50	60	70	80	90	
KM 301	4.5	135	360	180	120	78	43.8	34.8	25.8	19.2	10.8	1.8	94
KM 302	4.5	270	700	360	240	156	87.6	69.6	51.6	38.4	21.6	3.6	94
KM 303	4.5	405	980	540	360	234	131.4	104.4	77.4	57.6	32.4	5.4	94
KM 304	4.5	540	1380	720	480	312	175.2	139.2	103.2	76.8	43.2	7.2	94
KM 305	4.5	675	1480	850	580	390	219	174	129	96	54	9	94
KM 306	5	810	1650	1000	684	468	262.8	206.4	154.8	115.2	64.8	10.8	94
KM 301	6	185	360	260	140	130	95	60	30	16	8	1.5	94
KM 302	6	370	700	520	280	156	190	120	60	32	16	3	94
KM 303	6	610	980	780	420	234	285	180	90	48	24	4.5	94
KM 304	6	720	1380	1040	560	312	380	240	120	64	32	6	94
KM 305	6	780	1480	1300	700	390	475	300	150	80	40	7.5	94
KM 306	6	830	1650	1560	840	468	570	360	180	96	48	9	94

Pumping time (NL/min) at different vacuum levels (-kPA)

Model	Supply pressure (bar)	Air consumption (NL/min)	Maximum vacuum level (-kPA)										Maximum vacuum level (-kPA)
			0	10	20	30	40	50	60	70	80	90	
KM 301	4.5	135	-	0.022	0.06	0.11	0.21	0.4	0.65	0.95	1.6	4	94
KM 302	4.5	270	-	0.014	0.031	0.06	0.1	0.2	0.34	0.5	0.8	2.5	94
KM 303	4.5	405	-	0.012	0.029	0.058	0.095	0.18	0.31	0.46	0.59	1.5	94
KM 304	4.5	540	-	0.01	0.025	0.043	0.075	0.11	0.19	0.27	0.45	1.2	94
KM 305	4.5	675	-	0.006	0.015	0.029	0.052	0.085	0.145	0.202	0.33	1	94
KM 306	5	810	-	0.005	0.013	0.027	0.045	0.07	0.105	0.23	0.46	0.9	94
KM 301	6	185	-	0.018	0.05	0.08	0.018	0.25	0.4	0.62	1.55	-	94
KM 302	6	370	-	0.01	0.022	0.048	0.08	0.11	0.2	0.35	0.78	-	94
KM 303	6	610	-	0.009	0.019	0.045	0.075	0.13	0.18	0.31	0.7	-	94
KM 304	6	720	-	0.007	0.018	0.038	0.055	0.08	0.12	0.19	0.47	-	94
KM 305	6	780	-	0.005	0.013	0.026	0.045	0.062	0.115	0.194	0.56	-	94
KM 306	6	830	-	0.003	0.009	0.014	0.03	0.06	0.095	0.2	0.8	-	94

performance parameters

KL301~306

Model	Supply pressure (bar)	Maximum vacuum level (-kPA)	Maximum vacuum flow rate (NL/min)	Air consumption (NL/min)	Recommended pipe diameter(Ømm)	
					Air supply port	Vacuum port
KL 301	6	85	355	105	8	12
KL 302	6	85	710	260	8	15
KL 303	6	85	1050	390	8	19
KL 304	6	85	1410	520	8	25
KL 305	6	85	1500	650	10	25
KL 306	6	85	1690	780	10	25

Inflow rates (NL/min) at different vacuum levels (-kPA)

Model	Supply pressure (bar)	Air consumption (NL/min)	Maximum vacuum level (-kPA)										Maximum vacuum level (-kPA)
			0	10	20	30	40	50	60	70	80	90	
KL 301	6	105	355	240	160	115	65	42	34	20	8	–	85
KL 302	6	260	710	480	320	230	130	85	65	40	16	–	85
KL 303	6	390	1050	720	480	370	170	120	70	52	25	–	85
KL 304	6	520	1410	960	640	400	215	135	90	77	29	–	85
KL 305	6	650	1500	1130	800	495	265	180	130	85	34	–	85
KL 306	6	780	1690	1310	960	570	300	216	160	92	42	–	85

Pumping time (NL/min) at different vacuum levels (-kPA)

Model	Supply pressure (bar)	Air consumption (NL/min)	Maximum vacuum level (-kPA)										Maximum vacuum level (-kPA)
			0	10	20	30	40	50	60	70	80	90	
KL 301	6	105	–	0.03	0.06	0.1	0.2	0.039	0.58	0.87	1.2	–	85
KL 302	6	360	–	0.018	0.039	0.066	0.12	0.2	0.31	0.51	0.95	–	85
KL 303	6	390	–	0.01	0.02	0.04	0.08	0.12	0.2	0.31	0.75	–	85
KL 304	6	520	–	0.008	0.015	0.032	0.05	0.09	0.13	0.22	0.4	–	85
KL 305	6	650	–	0.006	0.016	0.026	0.045	0.078	0.11	0.18	0.33	–	85
KL 306	6	780	–	0.005	0.013	0.024	0.04	0.071	0.1	0.16	0.24	–	85

performance parameters

KS301~306

Model	Supply pressure (bar)	Maximum vacuum level (-kPA)	Maximum vacuum flow rate (NL/min)	Air consumption (NL/min)	Air supply port	Vacuum port
KS301	3.5	75	330	110	8	12
KS302	3.5	75	660	230	8	15
KS303	3.5	75	990	365	8	19
KS304	3.5	75	1220	445	8	25
KS305	3.5	75	1350	545	10	25
KS306	3.5	75	1470	650	10	25

Inflow rates (NL/min) at different vacuum levels (-kPA)

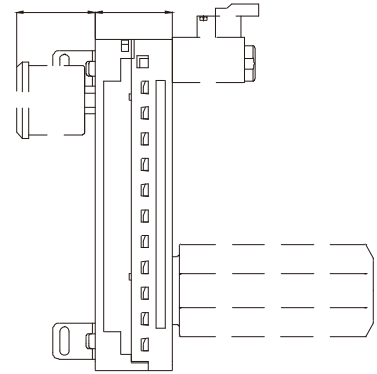
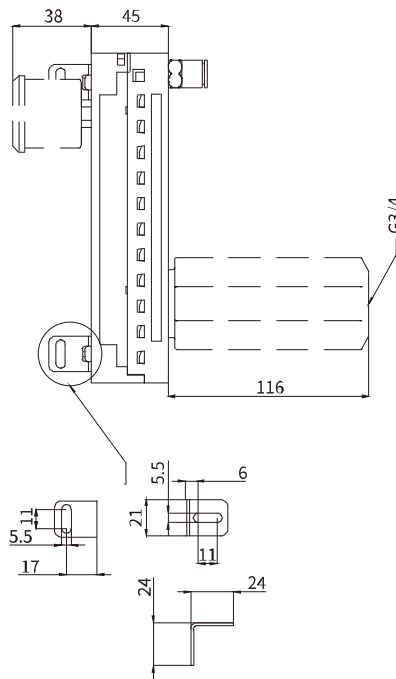
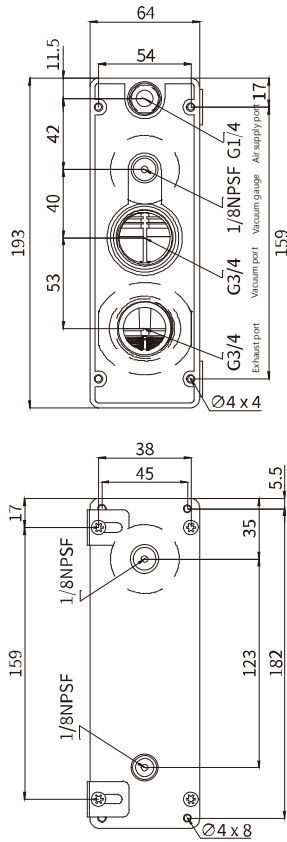
Model	Supply pressure (bar)	Air consumption (NL/min)	0	10	20	30	40	50	60	70	80	90	Maximum vacuum level (-kPA)
KS301	3.5	110	330	180	115	80	43	30	22.5	15.5	7.5	–	75
KS302	3.5	230	660	360	230	160	86	60	45	31	15	–	75
KS303	3.5	365	990	540	345	240	129	90	67.5	46.5	22.5	–	75
KS304	3.5	445	1220	720	460	320	172	120	90	62	30	–	75
KS305	3.5	545	1350	900	575	400	215	150	112.5	77.5	37.5	–	75
KS306	3.5	650	1470	1120	690	480	258	180	140	93	45	–	75

Pumping time (NL/min) at different vacuum levels (-kPA)

Model	Supply pressure (bar)	Air consumption (NL/min)	0	10	20	30	40	50	60	70	80	90	Maximum vacuum level (-kPA)
KS301	3.5	110	–	0.02	0.05	0.1	0.18	0.33	0.53	0.80	1.2	–	75
KS302	3.5	230	–	0.01	0.025	0.05	0.09	0.17	0.27	0.40	0.6	–	75
KS303	3.5	365	–	0.007	0.017	0.033	0.06	0.11	0.18	0.27	0.4	–	75
KS304	3.5	445	–	0.005	0.013	0.025	0.045	0.083	0.13	0.20	0.3	–	75
KS305	3.5	545	–	0.005	0.012	0.022	0.036	0.066	0.11	0.16	0.24	–	75
KS306	3.5	650	–	0.004	0.01	0.018	0.03	0.055	0.09	0.13	0.2	–	75

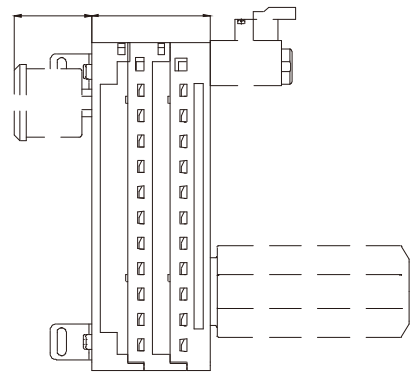
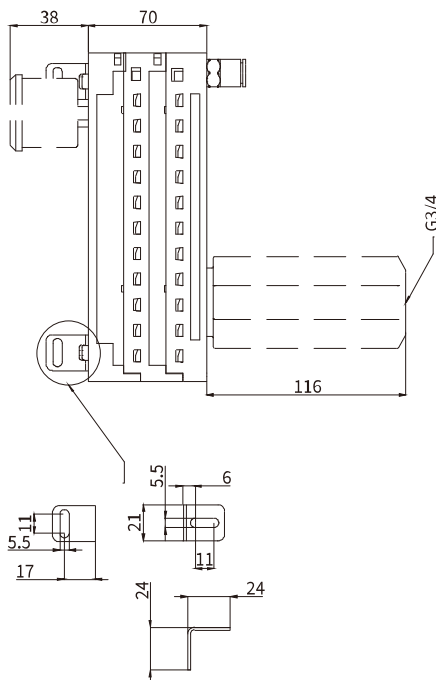
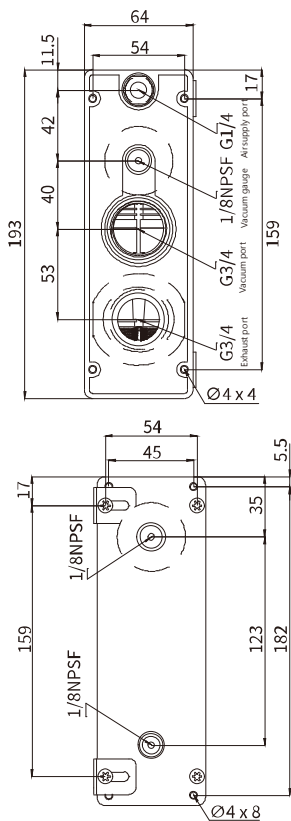
Dimensions

KM/KL/KS 301~302



	1	2	3
D	G1/4"	G3/4"	G3/4"
B	1/4"NPSF	3/4"NPT	3/4"NPT

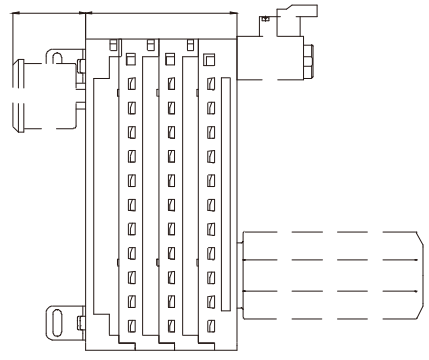
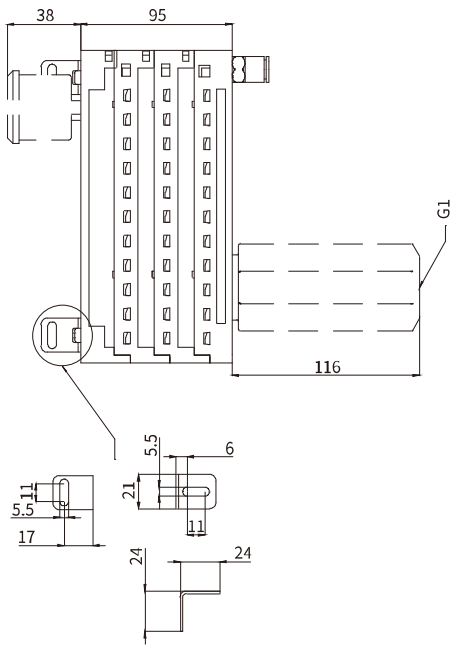
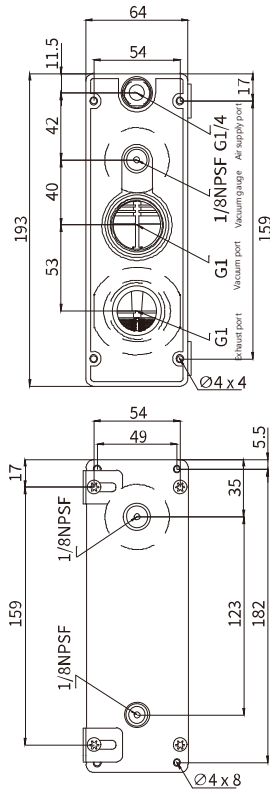
KM/KL/KS303~304



	1	2	3
D	G1/4"	G3/4"	G3/4"
B	1/4"NPSF	3/4"NPT	3/4"NPT

Dimensions

KM/KL/KS305~306



	1	2	3
D	G1/4"	G1"	G1"
B	1/4"NPSF	1"NPT	1"NPT