

3-Jaw Concentric Grippers

Precise Grabbing Safe Clamping



CLAMPING TECHNOLOGY

Pneumatic gripper is one of end-effectors which takes compressed air as power to clamp or grab workpieces, can replace human hand, used to catch workpieces with different shapes, measurements, weights and materials, to combine grabbing force and grabbing stroke perfectly and then improve the stability of production process.



High strength
mechanism grippers



Strong structure, greater
load bearing capacity



Multi-tooth cross-section
design, guarantee reliable
clamping



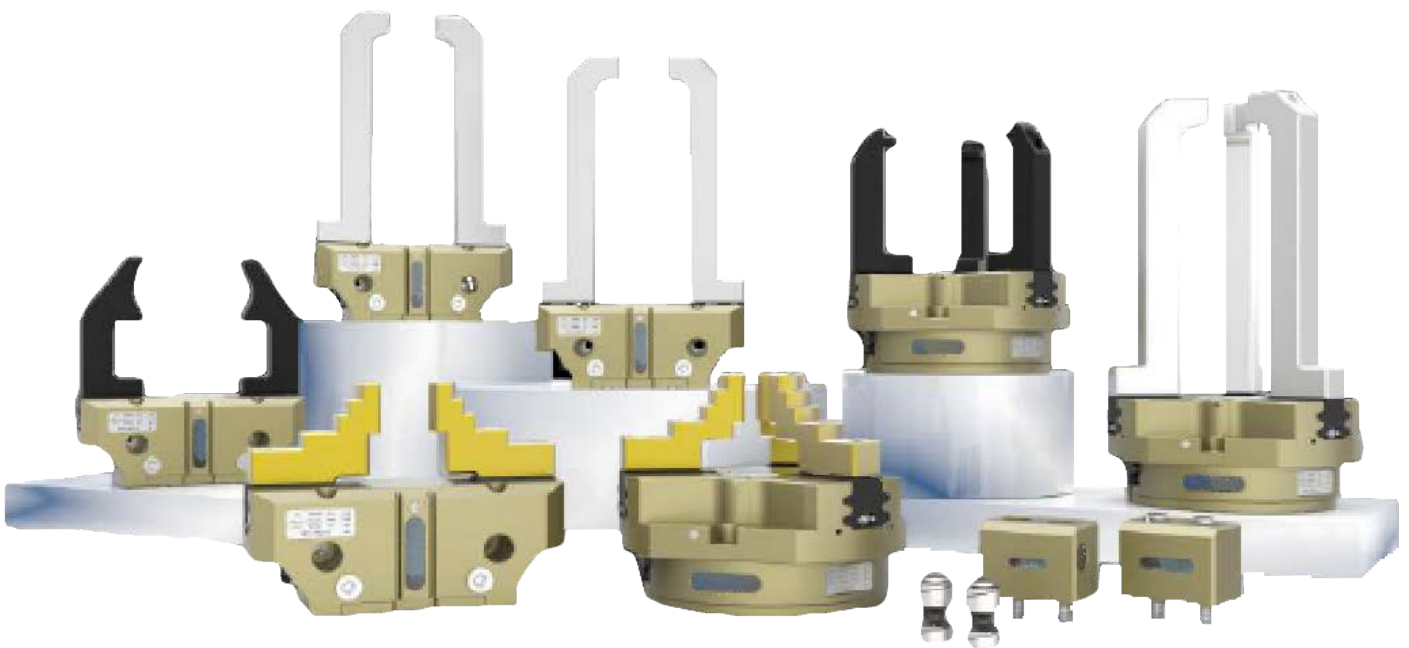
Multi-sensor sensing
positions, detect closing
and opening flexibly



Unique self-lubrication
design, longer service life
with maintenance-free



More than 400
combinations of function
expansion



Model: LT-TG3-40series

- ▶ Stroke per jaw: 2.5mm
- ▶ Recommended grabbing weight: 1.25kg
- ▶ Gripper weight: 0.13-0.14kg
- ▶ Self-lubricating design ensures reliable clamping
- ▶ T-type guide rail design allows precise grasping of various workpieces



Model	LT-TG3-40A	LT-TG3-40A-CFM	LT-TG3-40A-OFM
Item No.	F13010001	F13010002	F13010003
Stroke per jaw (mm)	2.5	2.5	2.5
Closing force (in the position of 20mm)	250	348	/
Opening force (in the position of 20mm)	275	/	373
The Min. holding force (N)	/	98	98
Recommended workpiece weight (kg)	1.25	1.25	1.25
Product weight (kg)	0.125	0.14	0.14
The Min. Air pressure (Mpa)	0.4	0.4	0.4
The Max. Air pressure (Mpa)	0.8	0.65	0.65
Rated air pressure (Mpa)	0.6	0.6	0.6
Suitable temperature (°C)	5~90	5~90	5~90
IP grade (IP)	IP40	IP40	IP40
Open/close time (s)	0.02/0.02	0.03/0.02	0.02/0.03
Repeatability (mm)	0.01	0.01	0.01
Air consumption (cm ³) (Round trip)	5	9	9
The allowed longest fingers (mm)	50	45	45
The allowed heaviest single finger (kg)	0.1	0.1	0.1

The recommended workpiece weight is calculated under the conditions of friction coefficient 0.1 and safety factor 2 (the robot acceleration isn't included) for matched gripping. If mechanical locking gripping is used, the grippable workpiece weight will be larger. The product comes with 6 finger location pins, the location pins of grippers aren't included;

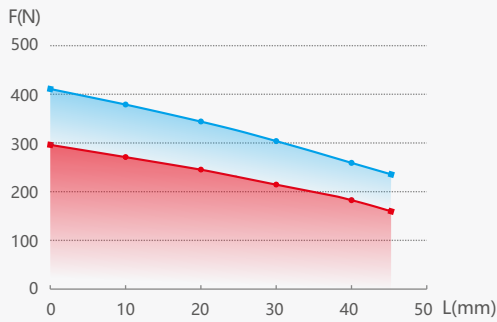
Extended Function - Dustproof type

Product Model	LT-TG3-40A-DP	LT-TG3-40A-CFM-DP	LT-TG3-40A-OFM-DP
Item No.	F13010006	F13010007	F13010008
IP grade (IP)	IP64	IP64	IP64
Purge air pressure (Mpa)	0.05~0.1	0.05~0.1	0.05~0.1
Product weight (kg)	0.185	0.2	0.2

Extended Function - High temperature type

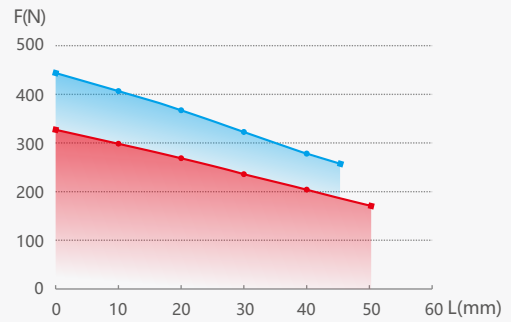
Product Model	LT-TG3-40A-HT	LT-TG3-40A-CFM-HT	LT-TG3-40A-OFM-HT
Item No.	F13010009	F13010010	F13010011
Suitable temperature (°C)	5~130	5~130	5~130
Product weight (kg)	0.125	0.14	0.14

Closing Force Diagram



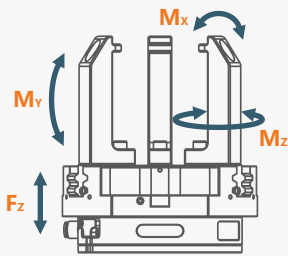
■ LT-TG3-40A ■ LT-TG3-40A-CFM

Opening Force Diagram



■ LT-TG3-40A ■ LT-TG3-40A-OFM

Dimensions and Maximum Loads



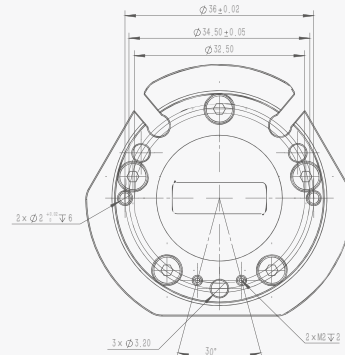
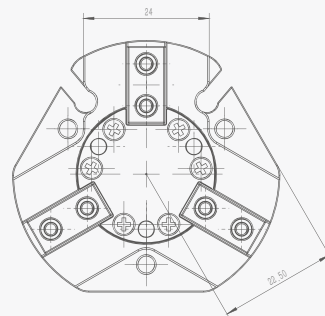
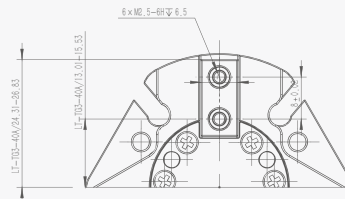
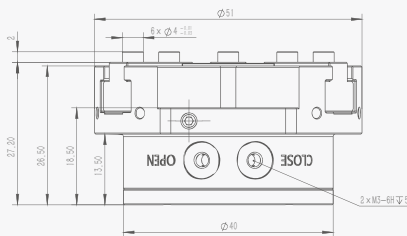
M_x max. 8N.m

M_y max. 10N.m

M_z max. 4N.m

F_z max. 200N

Dimensions



Model: LT-TG3-50series

- ▶ Stroke per jaw: 4mm
- ▶ Recommended grabbing weight: 2.1kg
- ▶ Gripper weight: 0.26-0.29kg
- ▶ Self-lubricating design ensures reliable clamping
- ▶ T-type guide rail design allows precise grasping of various workpieces



Model	LT-TG3-50A	LT-TG3-50A-CFM	LT-TG3-50A-OFM
Item No.	F13020001	F13020002	F13020003
Stroke per jaw (mm)	4	4	4
Closing force (in the position of 25mm)	430	555	/
Opening force (in the position of 25mm)	460	/	585
The Min. holding force (N)	/	125	125
Recommended workpiece weight (kg)	2.1	2.1	2.1
Product weight (kg)	0.26	0.29	0.29
The Min. Air pressure (Mpa)	0.4	0.4	0.4
The Max. Air pressure (Mpa)	0.8	0.65	0.65
Rated air pressure (Mpa)	0.6	0.6	0.6
Suitable temperature (°C)	5~90	5~90	5~90
IP grade (IP)	IP40	IP40	IP40
Open/close time (s)	0.02/0.02	0.03/0.02	0.02/0.03
Repeatability (mm)	0.01	0.01	0.01
Air consumption (cm ³) (Round trip)	12	22	22
The allowed longest fingers (mm)	64	58	58
The allowed heaviest single finger (kg)	0.18	0.18	0.18

The recommended workpiece weight is calculated under the conditions of friction coefficient 0.1 and safety factor 2 (the robot acceleration isn't included) for matched gripping. If mechanical locking gripping is used, the grippable workpiece weight will be larger. The product comes with 6 finger location pins, the location pins of grippers aren't included;

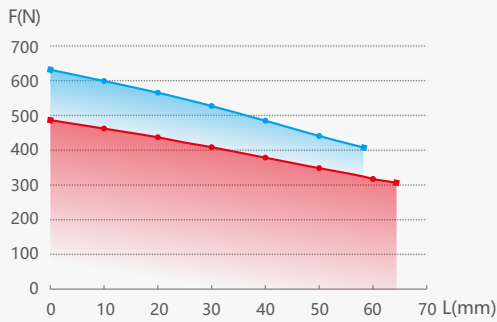
Extended Function - Dustproof type

Product Model	LT-TG3-50A-DP	LT-TG3-50A-CFM-DP	LT-TG3-50A-OFM-DP
Item No.	F13020007	F13020008	F13020009
IP grade (IP)	IP64	IP64	IP64
Purge air pressure (Mpa)	0.05~0.1	0.05~0.1	0.05~0.1
Product weight (kg)	0.34	0.37	0.37

Extended Function - High temperature type

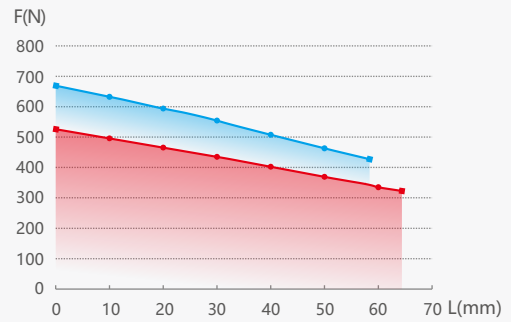
Product Model	LT-TG3-50A-HT	LT-TG3-50A-CFM-HT	LT-TG3-50A-OFM-HT
Item No.	F13020015	F13020016	F13020017
Suitable temperature (°C)	5~130	5~130	5~130
Product weight (kg)	0.26	0.29	0.29

Closing Force Diagram



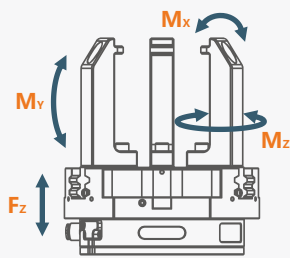
■ LT-TG3-50A ■ LT-TG3-50A-CFM

Opening Force Diagram



■ LT-TG3-50A ■ LT-TG3-50A-OFM

Dimensions and Maximum Loads



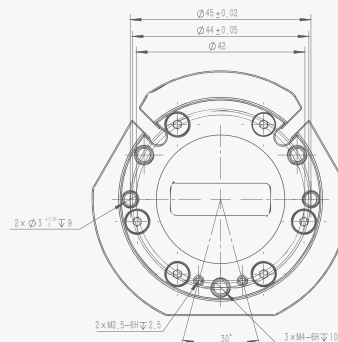
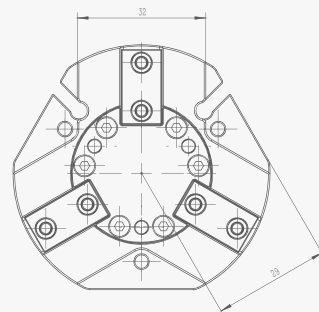
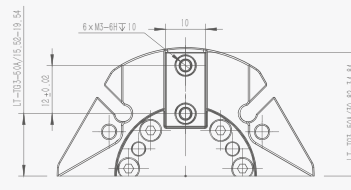
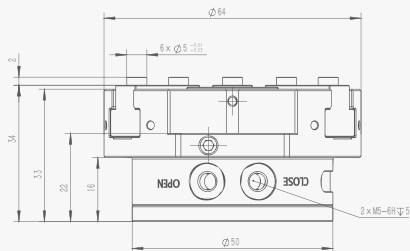
M_x max. 16N.m

M_y max. 20N.m

M_z max. 8N.m

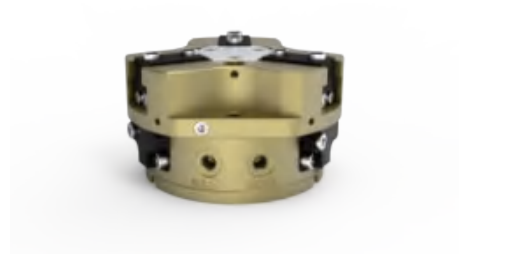
F_z max. 400N

Dimensions



Model: LT-TG3-64series

- ▶ Stroke per jaw: 6mm
- ▶ Recommended grabbing weight: 3.5kg
- ▶ Gripper weight: 0.45-0.5kg
- ▶ Self-lubricating design ensures reliable clamping
- ▶ T-type guide rail design allows precise grasping of various workpieces



Model	LT-TG3-64A	LT-TG3-64A-CFM	LT-TG3-64A-OFM
Item No.	F13030002	F13030003	F13030004
Stroke per jaw (mm)	6	6	6
Closing force (in the position of 25mm)	700	900	/
Opening force (in the position of 25mm)	760	/	960
The Min. holding force (N)	/	200	200
Recommended workpiece weight (kg)	3.5	3.5	3.5
Product weight (kg)	0.45	0.5	0.5
The Min. Air pressure (Mpa)	0.4	0.4	0.4
The Max. Air pressure (Mpa)	0.8	0.65	0.65
Rated air pressure (Mpa)	0.6	0.6	0.6
Suitable temperature (°C)	5~90	5~90	5~90
IP grade (IP)	IP40	IP40	IP40
Open/close time (s)	0.03/0.03	0.04/0.02	0.02/0.04
Repeatability (mm)	0.01	0.01	0.01
Air consumption (cm ³) (Round trip)	27	49	49
The allowed longest fingers (mm)	80	72	72
The allowed heaviest single finger (kg)	0.35	0.35	0.35

The recommended workpiece weight is calculated under the conditions of friction coefficient 0.1 and safety factor 2 (the robot acceleration isn't included) for matched gripping. If mechanical locking gripping is used, the grippable workpiece weight will be larger. The product comes with 6 finger location pins, the location pins of grippers aren't included;

Extended Function - Dustproof type

Product Model	LT-TG3-64A-DP	LT-TG3-64A-CFM-DP	LT-TG3-64A-OFM-DP
Item No.	F13030008	F13030009	F13030010
IP grade (IP)	IP64	IP64	IP64
Purge air pressure (Mpa)	0.05~0.1	0.05~0.1	0.05~0.1
Product weight (kg)	0.56	0.61	0.61

Extended Function - High temperature type

Product Model	LT-TG3-64A-HT	LT-TG3-64A-CFM-HT	LT-TG3-64A-OFM-HT
Item No.	F13030015	F13030016	F13030017
Suitable temperature (°C)	5~130	5~130	5~130
Product weight (kg)	0.45	0.5	0.5

Model: LT-PG3-80series

- ▶ Stroke per jaw: 8mm/4mm
- ▶ Recommended grabbing weight: 5.4kg-10.5kg
- ▶ Universal three-finger gripper for precise handling
- ▶ Sensitive sensor for greater flexibility
- ▶ Self-lubricating design ensures reliable clamping
- ▶ Lubrication groove design extends maintenance intervals



Model	LT-PG3-80A	LT-PG3-80A-CFM	LT-PG3-80A-OFM	LT-PG3-80B	LT-PG3-80B-CFM	LT-PG3-80B-OFM
Item No.	F13040002	F13040003	F13040004	F13040006	F13040007	F13040008
Stroke per jaw (mm)	8	8	8	4	4	4
Closing force(in the position of 25mm)	1090	1435	/	2150	2860	/
Opening force(in the position of 25mm)	1180	/	1525	2330	/	3040
The Min. holding force (N)	/	345	345	/	710	710
Recommended workpiece weight(kg)	5.4	5.4	5.4	10.5	10.5	10.5
Product weight (kg)	0.85	1	1	0.85	1	1
The Min. Air pressure (Mpa)	0.4	0.4	0.4	0.4	0.4	0.4
The Max. Air pressure (Mpa)	0.8	0.65	0.65	0.8	0.8	0.65
Rated air pressure (Mpa)	0.6	0.6	0.6	0.6	0.6	0.6
Suitable temperature (°C)	5~90	5~90	5~90	5~90	5~90	5~90
IP grade (IP)	IP40	IP40	IP40	IP40	IP40	IP40
Open/Close time (s)	0.05/0.05	0.06/0.04	0.04/0.06	0.05/0.05	0.06/0.04	0.04/0.06
Repeatability (mm)	0.01	0.01	0.01	0.01	0.01	0.01
Air consumption (cm ³) (Round trip)	60	108	108	60	108	108
The allowed longest fingers (mm)	110	105	105	105	100	100
The allowed heaviest single finger (kg)	0.6	0.6	0.6	0.6	0.6	0.6

The recommended workpiece weight is calculated under the conditions of friction coefficient 0.1 and safety factor 2 (the robot acceleration isn't included) for matched gripping. If mechanical locking gripping is used, the grippable workpiece weight will be larger. The product comes with 6 finger location pins, the location pins of grippers aren't included;

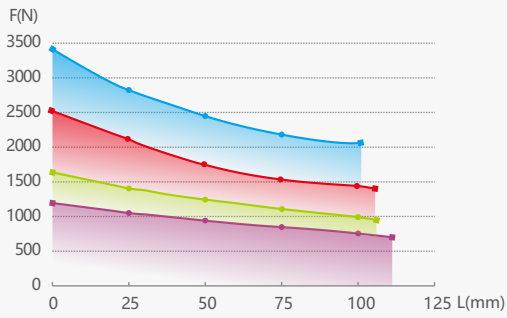
Extended Function - Dustproof type

Product Model	LT-PG3-80A-DP	LT-PG3-80A-CFM-DP	LT-PG3-80A-OFM-DP	LT-PG3-80B-DP	LT-PG3-80B-CFM-DP	LT-PG3-80B-OFM-DP
Item No.	F13040005	F13040010	F13040012	F13040009	F13040011	F13040013
IP grade (IP)	IP64	IP64	IP64	IP64	IP64	IP64
Purge air pressure (Mpa)	0.05~0.1	0.05~0.1	0.05~0.1	0.05~0.1	0.05~0.1	0.05~0.1
Product weight (kg)	0.99	1.14	1.14	0.99	1.14	1.14

Extended Function - High temperature type

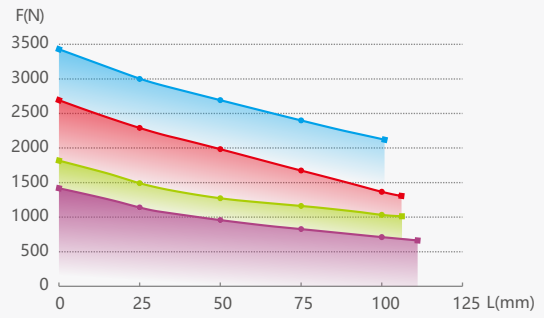
Product Model	LT-PG3-80A-HT	LT-PG3-80A-CFM-HT	LT-PG3-80A-OFM-HT	LT-PG3-80B-HT	LT-PG3-80B-CFM-HT	LT-PG3-80B-OFM-HT
Item No.	F13040014	F13040015	F13040016	F13040017	F13040018	F13040019
Suitable temperature (°C)	5~130	5~130	5~130	5~130	5~130	5~130
Product weight (kg)	0.85	1	1	0.85	1	1

Closing Force Diagram



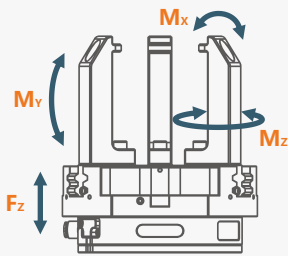
■ LT-PG3-80A ■ LT-PG3-80A-CFM
■ LT-PG3-80B ■ LT-PG3-80B-CFM

Opening Force Diagram



■ LT-PG3-80A ■ LT-PG3-80A-OFM
■ LT-PG3-80B ■ LT-PG3-80B-OFM

Dimensions and Maximum Loads



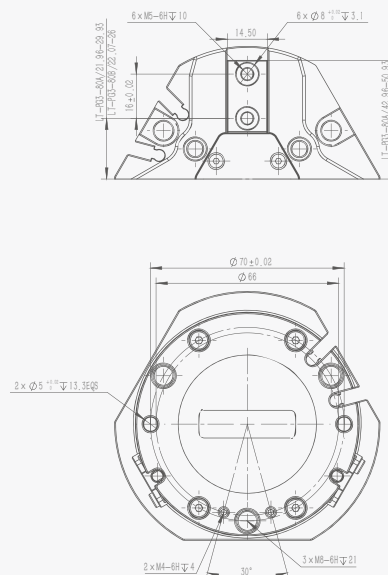
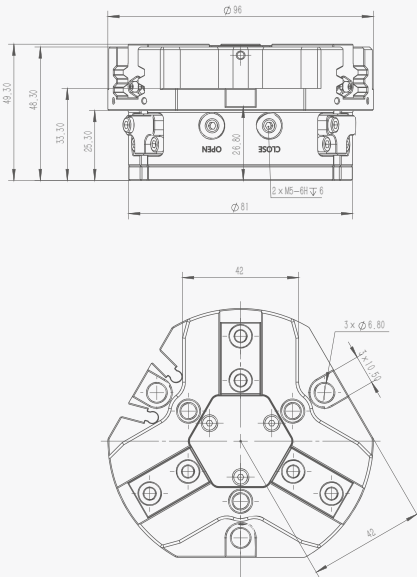
M_x max. 60N.m

M_y max. 95N.m

M_z max. 55N.m

F_z max. 1500N

Dimensions



Model: LT-PG3-100series

- ▶ Stroke per jaw: 10mm/5mm
- ▶ Recommended grabbing weight: 10kg-20kg
- ▶ Universal three-finger gripper for precise handling
- ▶ Unique toothed slide rail design ensures reliable clamping
- ▶ Self-lubricating design extends maintenance intervals
- ▶ Standard solutions for multiple application areas



Model	LT-PG3-100A	LT-PG3-100A-CFM	LT-PG3-100A-OFM	LT-PG3-100B	LT-PG3-100B-CFM	LT-PG3-100B-OFM
Item No.	F13050002	F13050003	F13050004	F13050006	F13050007	F13050008
Stroke per jaw (mm)	10	10	10	5	5	5
Closing force(in the position of 30mm)	2050	2750	/	4120	5570	/
Opening force(in the position of 30mm)	2180	/	2880	4390	/	5840
The Min. holding force (N)	/	700	700	/	1450	1450
Recommended workpiece weight(kg)	10	10	10	20	20	20
Product weight (kg)	1.25	1.5	1.5	1.3	1.5	1.5
The Min. Air pressure (Mpa)	0.4	0.4	0.4	0.4	0.4	0.4
The Max. Air pressure (Mpa)	0.8	0.65	0.65	0.8	0.65	0.65
Rated air pressure (Mpa)	0.6	0.6	0.6	0.6	0.6	0.6
Suitable temperature (°C)	5~90	5~90	5~90	5~90	5~90	5~90
IP grade (IP)	IP40	IP40	IP40	IP40	IP40	IP40
Open/Close time (s)	0.1/0.1	0.2/0.1	0.1/0.2	0.1/0.1	0.2/0.1	0.1/0.2
Repeatability (mm)	0.01	0.01	0.01	0.01	0.01	0.01
Air consumption (cm ³) (Round trip)	120	210	210	120	210	210
The allowed longest fingers (mm)	145	135	135	135	125	125
The allowed heaviest single finger (kg)	1.1	1.1	1.1	1.1	1.1	1.1

The recommended workpiece weight is calculated under the conditions of friction coefficient 0.1 and safety factor 2 (the robot acceleration isn't included) for matched gripping. If mechanical locking gripping is used, the grippable workpiece weight will be larger. The product comes with 6 finger location pins, the location pins of grippers aren't included;

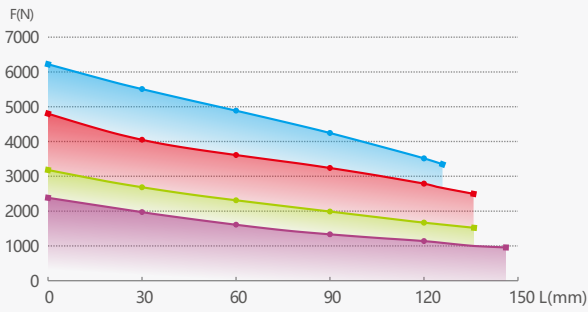
Extended Function - Dustproof type

Product Model	LT-PG3-100A-DP	LT-PG3-100A-CFM-DP	LT-PG3-100A-OFM-DP	LT-PG3-100B-DP	LT-PG3-100B-CFM-DP	LT-PG3-100B-OFM-DP
Item No.	F13050005	F13050010	F13050012	F13050009	F13050011	F13050013
IP grade (IP)	IP64	IP64	IP64	IP64	IP64	IP64
Purge air pressure (Mpa)	0.05~0.1	0.05~0.1	0.05~0.1	0.05~0.1	0.05~0.1	0.05~0.1
Product weight (kg)	1.51	1.76	1.76	1.56	1.76	1.76

Extended Function - High temperature type

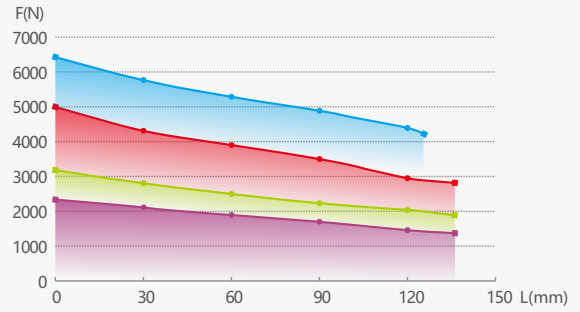
Product Model	LT-PG3-100A-HT	LT-PG3-100A-CFM-HT	LT-PG3-100A-OFM-HT	LT-PG3-100B-HT	LT-PG3-100B-CFM-HT	LT-PG3-100B-OFM-HT
Item No.	F13050014	F13050015	F13050016	F13050017	F13050018	F13050019
Suitable temperature (°C)	5~130	5~130	5~130	5~130	5~130	5~130
Product weight (kg)	1.25	1.5	1.5	1.3	1.5	1.5

Closing Force Diagram



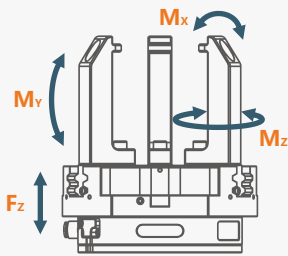
■ LT-PG3-100A ■ LT-PG3-100A-CFM
■ LT-PG3-100B ■ LT-PG3-100B-CFM

Opening Force Diagram



■ LT-PG3-100A ■ LT-PG3-100A-OFM
■ LT-PG3-100B ■ LT-PG3-100B-OFM

Dimensions and Maximum Loads



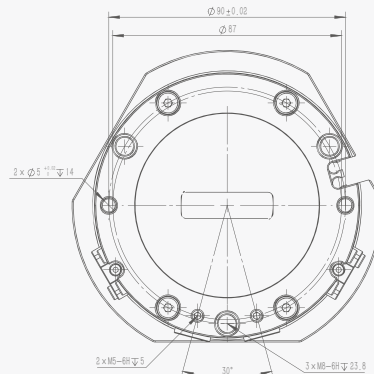
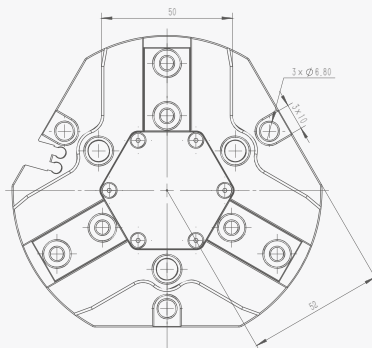
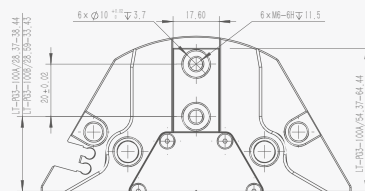
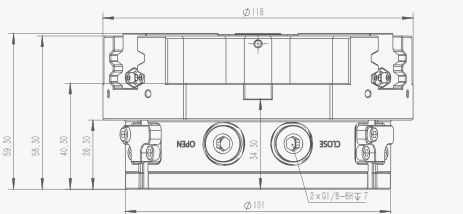
M_x max. 80N.m

M_y max. 115N.m

M_z max. 70N.m

F_z max. 2000N

Dimensions



Model: LT-PG3-125series

- ▶ Stroke per jaw: 13mm/6.5mm
- ▶ Recommended grabbing weight: 16kg-32kg
- ▶ Universal three-finger gripper, Longer gripping stroke
- ▶ Self-lubricating design, extended maintenance intervals
- ▶ Large gripping force, wide range of applications



Model	LT-PG3-125A	LT-PG3-125A-CFM	LT-PG3-125A-OFM	LT-PG3-125B	LT-PG3-125B-CFM	LT-PG3-125B-OFM
Item No.	F13060001	F13060003	F13060004	F13060007	F13060008	F13060009
Stroke per jaw (mm)	13	13	13	6.5	6.5	6.5
Closing force(in the position of 30mm)	3240	4340	/	6520	8820	/
Opening force(in the position of 30mm)	3480	/	4580	7000	/	9300
The Min. holding force (N)	/	1100	1100	/	2300	2300
Recommended workpiece weight(kg)	16	16	16	32	32	32
Product weight (kg)	2.4	2.9	2.9	2.4	2.9	2.9
The Min. Air pressure (Mpa)	0.4	0.4	0.4	0.4	0.4	0.4
The Max. Air pressure (Mpa)	0.8	0.65	0.65	0.8	0.65	0.65
Rated air pressure (Mpa)	0.6	0.6	0.6	0.6	0.6	0.6
Suitable temperature (°C)	5~90	5~90	5~90	5~90	5~90	5~90
IP grade (IP)	IP40	IP40	IP40	IP40	IP40	IP40
Open/Close time (s)	0.2/0.2	0.35/0.17	0.17/0.35	0.2/0.2	0.35/0.17	0.17/0.35
Repeatability (mm)	0.01	0.01	0.01	0.01	0.01	0.01
Air consumption (cm ³) (Round trip)	230	380	380	230	380	380
The allowed longest fingers (mm)	180	170	170	170	160	160
The allowed heaviest single finger (kg)	2.1	2.1	2.1	2.1	2.1	2.1

The recommended workpiece weight is calculated under the conditions of friction coefficient 0.1 and safety factor 2 (the robot acceleration isn't included) for matched gripping. If mechanical locking gripping is used, the grippable workpiece weight will be larger. The product comes with 6 finger location pins, the location pins of grippers aren't included;

Extended Function - Dustproof type

Product Model	LT-PG3-125A-DP	LT-PG3-125A-CFM-DP	LT-PG3-125A-OFM-DP	LT-PG3-125B-DP	LT-PG3-125B-CFM-DP	LT-PG3-125B-OFM-DP
Item No.	F13060006	F13060011	F13060013	F13060010	F13060012	F13060014
IP grade (IP)	IP64	IP64	IP64	IP64	IP64	IP64
Purge air pressure (Mpa)	0.05~0.1	0.05~0.1	0.05~0.1	0.05~0.1	0.05~0.1	0.05~0.1
Product weight (kg)	2.73	3.23	3.23	2.73	3.23	3.23

Extended Function - High temperature type

Product Model	LT-PG3-125A-HT	LT-PG3-125A-CFM-HT	LT-PG3-125A-OFM-HT	LT-PG3-125B-HT	LT-PG3-125B-CFM-HT	LT-PG3-125B-OFM-HT
Item No.	F13060015	F13060016	F13060017	F13060018	F13060019	F13060020
Suitable temperature (°C)	5~130	5~130	5~130	5~130	5~130	5~130
Product weight (kg)	2.4	2.9	2.9	2.4	2.9	2.9

Model: LT-PG3-160series



- ▶ Stroke per jaw: 16mm/8mm
- ▶ Recommended grabbing weight: 29.5kg-57kg
- ▶ Three-finger gripper with long stroke and large clamping force
- ▶ Sturdy toothed slide rail design can withstand large torque
- ▶ Non-destructive fatigue test for tens of millions of opening and closing times, self-lubricating design to extend maintenance intervals

Model	LT-PG3-160A	LT-PG3-160A-CFM	LT-PG3-160A-OFM	LT-PG3-160B	LT-PG3-160B-CFM	LT-PG3-160B-OFM
Item No.	F13070002	F13070003	F13070004	F13070006	F13070008	F13070009
Stroke per jaw (mm)	16	16	16	8	8	8
Closing force(in the position of 40mm)	5970	7770	/	11480	15030	/
Opening force(in the position of 40mm)	6380	/	8180	12270	/	15820
The Min. holding force (N)	/	1800	1800	/	3550	3550
Recommended workpiece weight(kg)	29.5	29.5	29.5	57	57	57
Product weight (kg)	5.1	5.9	5.9	5.1	5.9	5.9
The Min. Air pressure (Mpa)	0.4	0.4	0.4	0.4	0.4	0.4
The Max. Air pressure (Mpa)	0.8	0.65	0.65	0.8	0.65	0.65
Rated air pressure (Mpa)	0.6	0.6	0.6	0.6	0.6	0.6
Suitable temperature (°C)	5~90	5~90	5~90	5~90	5~90	5~90
IP grade (IP)	IP40	IP40	IP40	IP40	IP40	IP40
Open/Close time (s)	0.5/0.5	0.8/0.4	0.4/0.8	0.5/0.5	0.8/0.4	0.4/0.8
Repeatability (mm)	0.02	0.02	0.02	0.02	0.02	0.02
Air consumption (cm ³) (Round trip)	500	870	870	500	870	870
The allowed longest fingers (mm)	220	210	210	210	200	200
The allowed heaviest single finger (kg)	3.5	3.5	3.5	3.5	3.5	3.5

The recommended workpiece weight is calculated under the conditions of friction coefficient 0.1 and safety factor 2 (the robot acceleration isn't included) for matched gripping. If mechanical locking gripping is used, the grippable workpiece weight will be larger. The product comes with 6 finger location pins, the location pins of grippers aren't included;

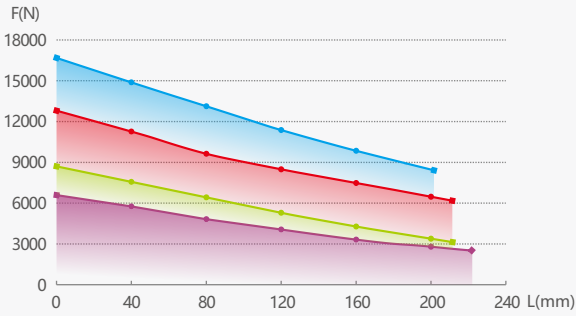
Extended Function - Dustproof type

Product Model	LT-PG3-160A-DP	LT-PG3-160A-CFM-DP	LT-PG3-160A-OFM-DP	LT-PG3-160B-DP	LT-PG3-160B-CFM-DP	LT-PG3-160B-OFM-DP
Item No.	F13070005	F13070011	F13070013	F13070010	F13070012	F13070014
IP grade (IP)	IP64	IP64	IP64	IP64	IP64	IP64
Purge air pressure (Mpa)	0.05~0.1	0.05~0.1	0.05~0.1	0.05~0.1	0.05~0.1	0.05~0.1
Product weight (kg)	5.62	6.42	6.42	5.62	6.42	6.42

Extended Function - High temperature type

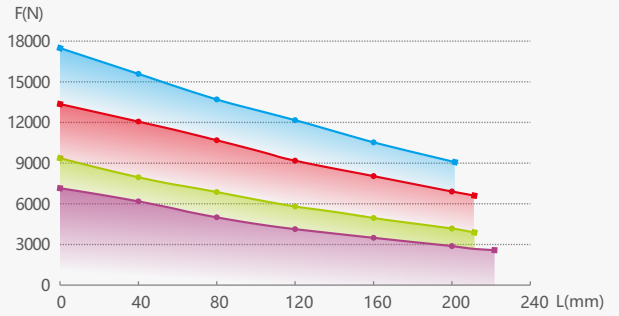
Product Model	LT-PG3-160A-HT	LT-PG3-160A-CFM-HT	LT-PG3-160A-OFM-HT	LT-PG3-160B-HT	LT-PG3-160B-CFM-HT	LT-PG3-160B-OFM-HT
Item No.	F13070015	F13070016	F13070017	F13070018	F13070019	F13070020
Suitable temperature (°C)	5~130	5~130	5~130	5~130	5~130	5~130
Product weight (kg)	5.1	5.9	5.9	5.1	5.9	5.9

Closing Force Diagram



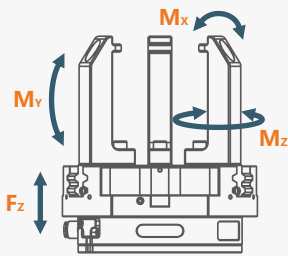
■ LT-PG3-160A ■ LT-PG3-160A-CFM
■ LT-PG3-160B ■ LT-PG3-160B-CFM

Opening Force Diagram



■ LT-PG3-160A ■ LT-PG3-160A-OFM
■ LT-PG3-160B ■ LT-PG3-160B-OFM

Dimensions and Maximum Loads



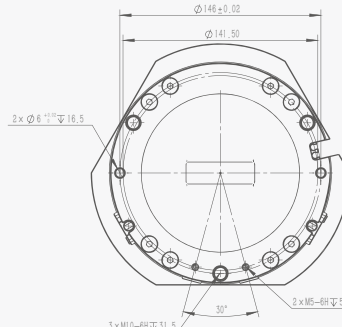
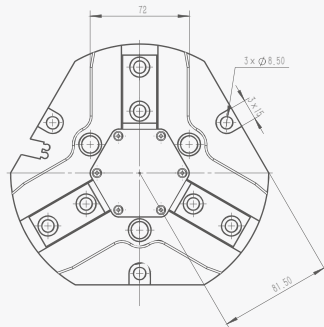
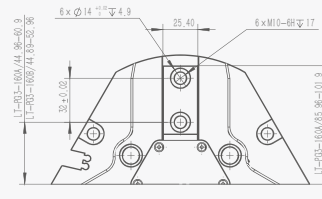
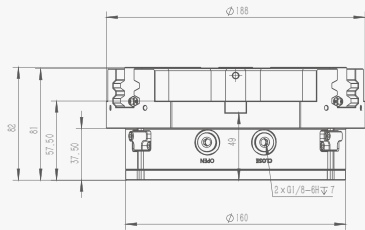
M_x max. 170N.m

M_y max. 180N.m

M_z max. 130N.m

F_z max. 4300N

Dimensions



Model: LT-PG3-200series

- ▶ Stroke per jaw: 25mm/14mm
- ▶ Recommended grabbing weight:41kg-63kg
- ▶ Universal three-finger gripper with longer gripping stroke and greater clamping force
- ▶ Self-lubricating design, extended maintenance intervals
- ▶ Toothed slide rail design ensures accurate and reliable clamping



Model	LT-PG3-200A	LT-PG3-200A-CFM	LT-PG3-200A-OFM	LT-PG3-200B	LT-PG3-200B-CFM	LT-PG3-200B-OFM
Item No.	F13080002	F13080003	F13080004	F13080006	F13080007	F13080008
Stroke per jaw (mm)	25	25	25	14	14	14
Closing force(in the position of 50mm)	8200	10910	/	12670	17320	/
Opening force(in the position of 50mm)	8620	/	11330	13300	/	17950
The Min. holding force (N)	/	2710	2710	/	4650	4650
Recommended workpiece weight(kg)	41	41	41	63	63	63
Product weight (kg)	9.6	10.9	10.8	9.8	11.1	11
The Min. Air pressure (Mpa)	0.4	0.4	0.4	0.4	0.4	0.4
The Max. Air pressure (Mpa)	0.8	0.65	0.65	0.8	0.65	0.65
Rated air pressure (Mpa)	0.6	0.6	0.6	0.6	0.6	0.6
Suitable temperature (°C)	5~90	5~90	5~90	5~90	5~90	5~90
IP grade (IP)	IP40	IP40	IP40	IP40	IP40	IP40
Open/Close time (s)	1.2/1.2	1.5/1	1/1.5	1.2/1.2	1.5/1	1/1.5
Repeatability (mm)	0.05	0.05	0.05	0.05	0.05	0.05
Air consumption (cm ³) (Round trip)	1050	1730	1730	1050	1730	1730
The allowed longest fingers (mm)	280	240	240	240	200	200
The allowed heaviest single finger (kg)	6.5	6.5	6.5	6.5	6.5	6.5

The recommended workpiece weight is calculated under the conditions of friction coefficient 0.1 and safety factor 2 (the robot acceleration isn't included) for matched gripping. If mechanical locking gripping is used, the grippable workpiece weight will be larger. The product comes with 6 finger location pins, the location pins of grippers aren't included;

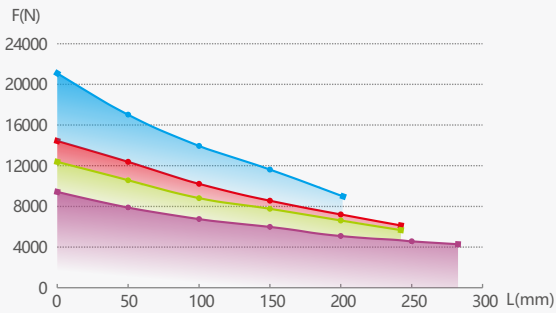
Extended Function - Dustproof type

Product Model	LT-PG3-200A-DP	LT-PG3-200A-CFM-DP	LT-PG3-200A-OFM-DP	LT-PG3-200B-DP	LT-PG3-200B-CFM-DP	LT-PG3-200B-OFM-DP
Item No.	F13080005	F13080011	F13080012	F13080013	F13080009	F13080010
IP grade (IP)	IP64	IP64	IP64	IP64	IP64	IP64
Purge air pressure (Mpa)	0.05~0.1	0.05~0.1	0.05~0.1	0.05~0.1	0.05~0.1	0.05~0.1
Product weight (kg)	10.6	11.9	11.8	10.8	12.1	12

Extended Function - High temperature type

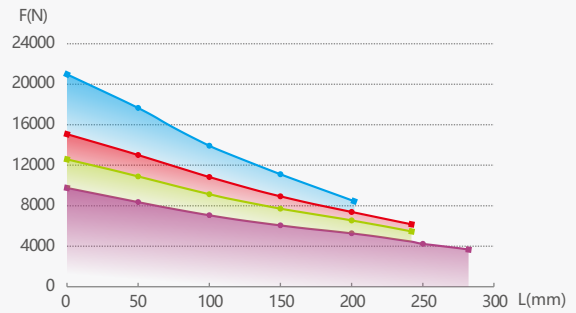
Product Model	LT-PG3-200A-HT	LT-PG3-200A-CFM-HT	LT-PG3-200A-OFM-HT	LT-PG3-200B-HT	LT-PG3-200B-CFM-HT	LT-PG3-200B-OFM-HT
Item No.	F13080014	F13080015	F13080016	F13080017	F13080018	F13080019
Suitable temperature (°C)	5~130	5~130	5~130	5~130	5~130	5~130
Product weight (kg)	9.6	10.9	10.8	9.8	11.1	11

Closing Force Diagram



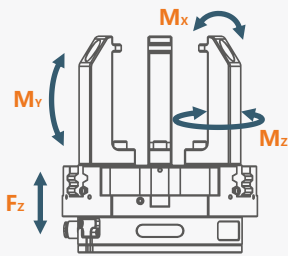
■ LT-PG3-200A ■ LT-PG3-200A-CFM
■ LT-PG3-200B ■ LT-PG3-200B-CFM

Opening Force Diagram



■ LT-PG3-200A ■ LT-PG3-200A-OFM
■ LT-PG3-200B ■ LT-PG3-200B-OFM

Dimensions and Maximum Loads



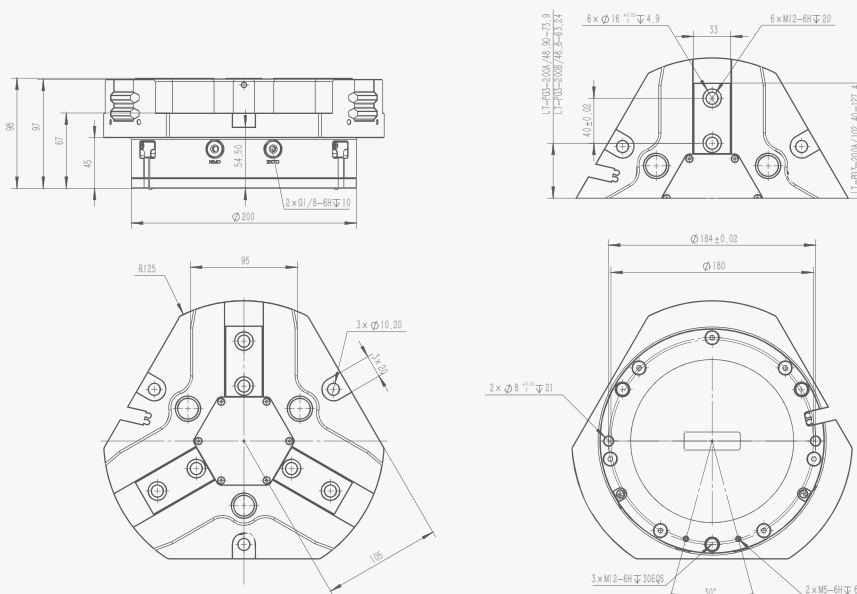
M_x max. 180N.m

M_y max. 200N.m

M_z max. 140N.m

F_z max. 5000N

Dimensions



Model: LT-PG3-240series

- ▶ Stroke per jaw: 30mm/17mm
- ▶ Recommended grabbing weight:59kg-101kg
- ▶ Three-finger gripper with longer stroke and greater gripping force
- ▶ Sturdy toothed slide rail design to withstand greater torque
- ▶ Self-lubricating design to extend maintenance intervals, non-destructive fatigue testing for tens of millions of openings and closings



Model	LT-PG3-240A	LT-PG3-240A-CFM	LT-PG3-240A-OFM	LT-PG3-240B	LT-PG3-240B-CFM	LT-PG3-240B-OFM
Item No.	F13090003	F13090005	F13090004	F13090006	F13090007	F13090008
Stroke per jaw (mm)	30	30	30	17	17	17
Closing force(in the position of 40mm)	11860	16010	/	20390	27580	/
Opening force(in the position of 40mm)	12660	/	16810	21760	/	28950
The Min. holding force (N)	/	4150	4150	/	7190	7190
Recommended workpiece weight(kg)	59	59	59	101	101	101
Product weight (kg)	17	19.1	19	17.4	19.5	19.4
The Min. Air pressure (Mpa)	0.4	0.4	0.4	0.4	0.4	0.4
The Max. Air pressure (Mpa)	0.8	0.65	0.65	0.8	0.65	0.65
Rated air pressure (Mpa)	0.6	0.6	0.6	0.6	0.6	0.6
Suitable temperature (°C)	5~90	5~90	5~90	5~90	5~90	5~90
IP grade (IP)	IP40	IP40	IP40	IP40	IP40	IP40
Open/Close time (s)	1.25/1.25	1.7/1.1	1.1/2.1	1.25/1.25	1.7/1.1	1.1/2.1
Repeatability (mm)	0.05	0.05	0.05	0.05	0.05	0.05
Air consumption (cm ³) (Round trip)	1800	3100	3100	1800	3100	3100
The allowed longest fingers (mm)	300	250	250	250	200	200
The allowed heaviest single finger (kg)	8.5	8.5	8.5	8.5	8.5	8.5

The recommended workpiece weight is calculated under the conditions of friction coefficient 0.1 and safety factor 2 (the robot acceleration isn't included) for matched gripping. If mechanical locking gripping is used, the grippable workpiece weight will be larger. The product comes with 6 finger location pins, the location pins of grippers aren't included;

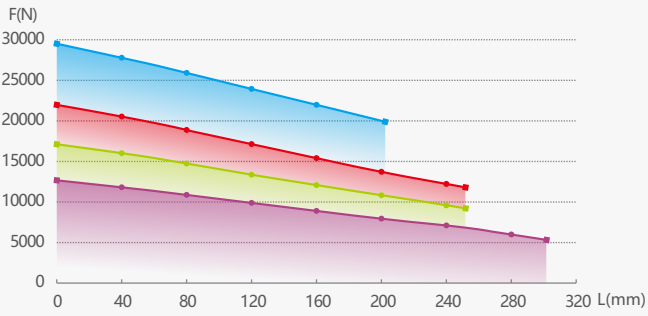
Extended Function - Dustproof type

Product Model	LT-PG3-240A-DP	LT-PG3-240A-CFM-DP	LT-PG3-240A-OFM-DP	LT-PG3-240B-DP	LT-PG3-240B-CFM-DP	LT-PG3-240B-OFM-DP
Item No.	F13090002	F13090010	F13090011	F13090009	F13090012	F13090013
IP grade (IP)	IP64	IP64	IP64	IP64	IP64	IP64
Purge air pressure (Mpa)	0.05~0.1	0.05~0.1	0.05~0.1	0.05~0.1	0.05~0.1	0.05~0.1
Product weight (kg)	18.2	20.3	20.2	18.6	20.7	20.6

Extended Function - High temperature type

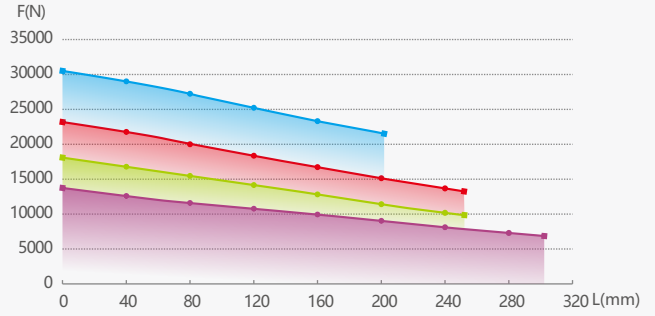
Product Model	LT-PG3-240A-HT	LT-PG3-240A-CFM-HT	LT-PG3-240A-OFM-HT	LT-PG3-240B-HT	LT-PG3-240B-CFM-HT	LT-PG3-240B-OFM-HT
Item No.	F13090014	F13090015	F13090016	F13090017	F13090018	F13090019
Suitable temperature (°C)	5~130	5~130	5~130	5~130	5~130	5~130
Product weight (kg)	17	19.1	19	17.4	19.5	19.4

Closing Force Diagram



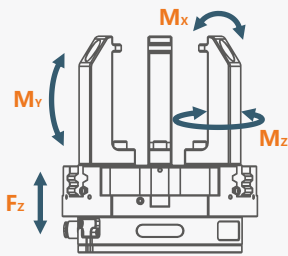
■ LT-PG3-240A ■ LT-PG3-240A-CFM
■ LT-PG3-240B ■ LT-PG3-240B-CFM

Opening Force Diagram



■ LT-PG3-240A ■ LT-PG3-240A-OFM
■ LT-PG3-240B ■ LT-PG3-240B-OFM

Dimensions and Maximum Loads



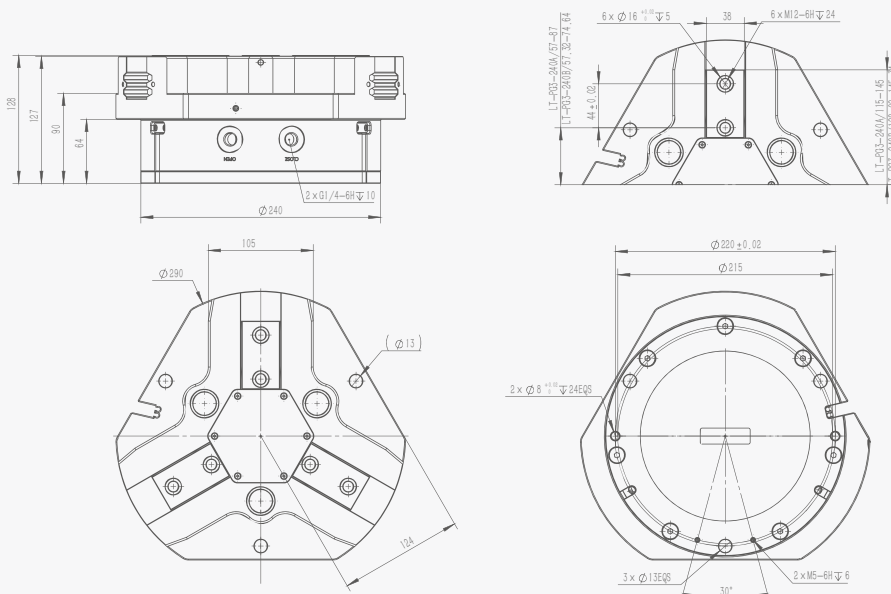
M_x max. 265N.m

M_y max. 250N.m

M_z max. 160N.m

F_z max. 6200N

Dimensions



Model: LT-PG3-300series

- ▶ Stroke per jaw: 35mm/17mm
- ▶ Recommended grabbing weight:79kg-137kg
- ▶ Three-finger gripper with longer stroke and greater gripping force
- ▶ Sturdy toothed slide rail design to withstand greater torque
- ▶ Self-lubricating design to extend maintenance intervals, non-destructive fatigue testing for tens of millions of openings and closings



Model	LT-PG3-300A	LT-PG3-300A-CFM	LT-PG3-300A-OFM	LT-PG3-300B	LT-PG3-300B-CFM	LT-PG3-300B-OFM
Item No.	F13100001	F13100002	F13100003	F13100005	F13100006	F13100007
Stroke per jaw (mm)	35	35	35	20	20	20
Closing force(in the position of 50mm)	15950	25450	/	27410	43910	/
Opening force(in the position of 50mm)	16740	/	26240	28780	/	45280
The Min. holding force (N)	/	9500	9500	/	16500	16500
Recommended workpiece weight(kg)	79	79	79	137	137	137
Product weight (kg)	32	34	35	32	34	35
The Min. Air pressure (Mpa)	0.4	0.4	0.4	0.4	0.4	0.4
The Max. Air pressure (Mpa)	0.8	0.65	0.65	0.8	0.65	0.65
Rated air pressure (Mpa)	0.6	0.6	0.6	0.6	0.6	0.6
Suitable temperature (°C)	5~90	5~90	5~90	5~90	5~90	5~90
IP grade (IP)	IP40	IP40	IP40	IP40	IP40	IP40
Open/Close time (s)	1.3/1.3	2/1.2	1.2/2.5	1.3/1.3	2/1.2	1.2/2.5
Repeatability (mm)	0.05	0.05	0.05	0.05	0.05	0.05
Air consumption (cm ³) (Round trip)	2900	5100	5100	2900	5100	5100
The allowed longest fingers (mm)	250	225	225	225	200	200
The allowed heaviest single finger (kg)	11.5	11.5	11.5	11.5	11.5	11.5

The recommended workpiece weight is calculated under the conditions of friction coefficient 0.1 and safety factor 2 (the robot acceleration isn't included) for matched gripping. If mechanical locking gripping is used, the grippable workpiece weight will be larger. The product comes with 6 finger location pins, the location pins of grippers aren't included;

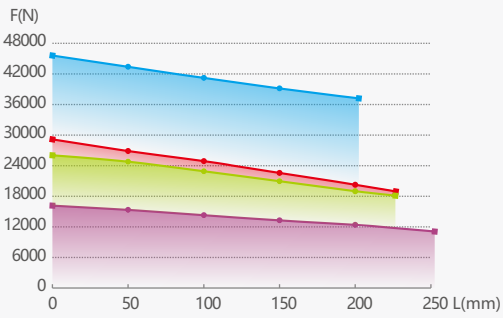
Extended Function - Dustproof type

Product Model	LT-PG3-300A-DP	LT-PG3-300A-CFM-DP	LT-PG3-300A-OFM-DP	LT-PG3-300B-DP	LT-PG3-300B-CFM-DP	LT-PG3-300B-OFM-DP
Item No.	F13100004	F13100010	F13100011	F13100008	F13100012	F13100013
IP grade (IP)	IP64	IP64	IP64	IP64	IP64	IP64
Purge air pressure (Mpa)	0.05~0.1	0.05~0.1	0.05~0.1	0.05~0.1	0.05~0.1	0.05~0.1
Product weight (kg)	33.6	35.6	36.6	33.6	35.6	36.6

Extended Function - High temperature type

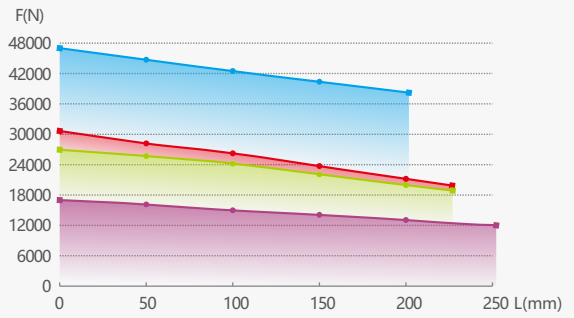
Product Model	LT-PG3-300A-HT	LT-PG3-300A-CFM-HT	LT-PG3-300A-OFM-HT	LT-PG3-300B-HT	LT-PG3-300B-CFM-HT	LT-PG3-300B-OFM-HT
Item No.	F13100014	F13100015	F13100016	F13100017	F13100018	F13100019
Suitable temperature (°C)	5~130	5~130	5~130	5~130	5~130	5~130
Product weight (kg)	32	34	35	32	34	35

Closing Force Diagram



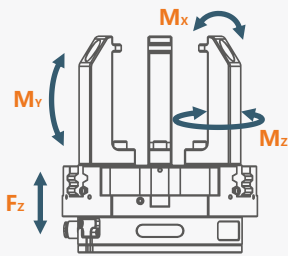
■ LT-PG3-300A ■ LT-PG3-300A-CFM
■ LT-PG3-300B ■ LT-PG3-300B-CFM

Opening Force Diagram



■ LT-PG3-300A ■ LT-PG3-300A-OFM
■ LT-PG3-300B ■ LT-PG3-300B-OFM

Dimensions and Maximum Loads



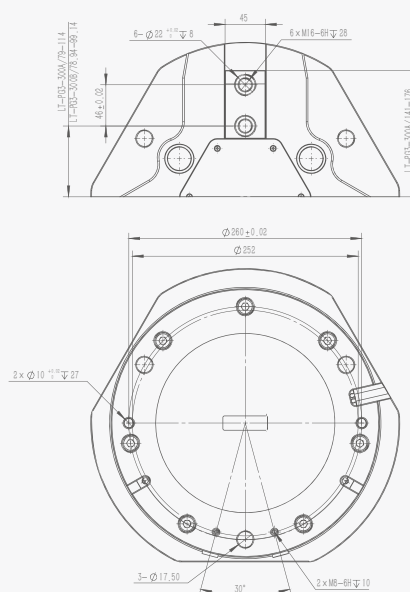
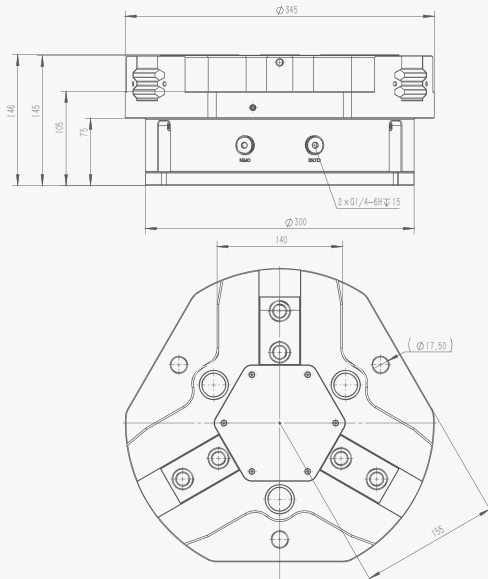
M_x max. 400N.m

M_y max. 400N.m

M_z max. 280N.m

F_z max. 8000N

Dimensions



Model: LT-PG3-380series

- ▶ Stroke per jaw: 45mm/26mm
- ▶ Recommended grabbing weight:145kg-249kg
- ▶ Three-finger gripper with longer stroke and greater gripping force
- ▶ Sturdy toothed slide rail design to withstand greater torque
- ▶ Self-lubricating design to extend maintenance intervals, non-destructive fatigue testing for tens of millions of openings and closings



Model	LT-PG3-380A	LT-PG3-380A-CFM	LT-PG3-380A-OFM	LT-PG3-380B	LT-PG3-380B-CFM	LT-PG3-380B-OFM
Item No.	F13110001	F13110002	F13110003	F13110005	F13110006	F13110007
Stroke per jaw (mm)	45	45	45	26	26	26
Closing force(in the position of 50mm)	29040	38340	/	49900	65900	/
Opening force(in the position of 50mm)	30030	/	39330	51610	/	67610
The Min. holding force (N)	/	9300	9300	/	16000	16000
Recommended workpiece weight(kg)	145	145	145	249	249	249
Product weight (kg)	58	65	65	58.5	65.5	65.5
The Min. Air pressure (Mpa)	0.4	0.4	0.4	0.4	0.4	0.4
The Max. Air pressure (Mpa)	0.8	0.65	0.65	0.8	0.65	0.65
Rated air pressure (Mpa)	0.6	0.6	0.6	0.6	0.6	0.6
Suitable temperature (°C)	5~90	5~90	5~90	5~90	5~90	5~90
IP grade (IP)	IP40	IP40	IP40	IP40	IP40	IP40
Open/Close time (s)	2.2/2.2	4.6/2	2/4	2.2/2.2	4.6/2	2/4
Repeatability (mm)	0.05	0.05	0.05	0.05	0.05	0.05
Air consumption (cm ³) (Round trip)	7200	9500	9500	7200	9500	9500
The allowed longest fingers (mm)	250	225	225	225	200	200
The allowed heaviest single finger (kg)	13.5	13.5	13.5	13.5	13.5	13.5

The recommended workpiece weight is calculated under the conditions of friction coefficient 0.1 and safety factor 2 (the robot acceleration isn't included) for matched gripping. If mechanical locking gripping is used, the grippable workpiece weight will be larger. The product comes with 6 finger location pins, the location pins of grippers aren't included;

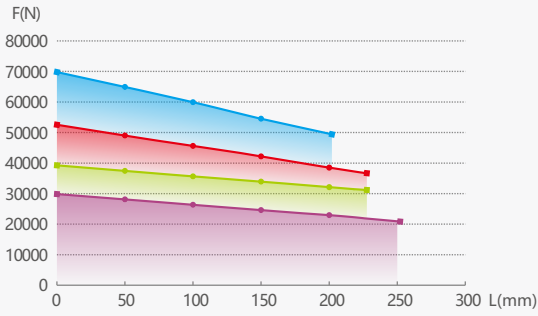
Extended Function - Dustproof type

Product Model	LT-PG3-380A-DP	LT-PG3-380A-CFM-DP	LT-PG3-380A-OFM-DP	LT-PG3-380B-DP	LT-PG3-380B-CFM-DP	LT-PG3-380B-OFM-DP
Item No.	F13110004	F13110010	F13110011	F13110008	F13110012	F13110013
IP grade (IP)	IP64	IP64	IP64	IP64	IP64	IP64
Purge air pressure (Mpa)	0.05~0.1	0.05~0.1	0.05~0.1	0.05~0.1	0.05~0.1	0.05~0.1
Product weight (kg)	61.7	68.7	68.7	62.2	69.2	69.2

Extended Function - High temperature type

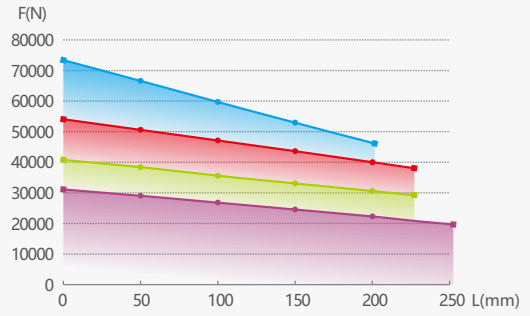
Product Model	LT-PG3-380A-HT	LT-PG3-380A-CFM-HT	LT-PG3-380A-OFM-HT	LT-PG3-380B-HT	LT-PG3-380B-CFM-HT	LT-PG3-380B-OFM-HT
Item No.	F13110014	F13110015	F13110016	F13110017	F13110018	F13110019
Suitable temperature (°C)	5~130	5~130	5~130	5~130	5~130	5~130
Product weight (kg)	58	65	65	58.5	65.5	65.5

Closing Force Diagram



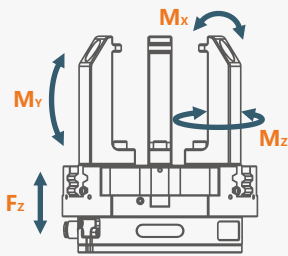
■ LT-PG3-380A ■ LT-PG3-380A-CFM
■ LT-PG3-380B ■ LT-PG3-380B-CFM

Opening Force Diagram



■ LT-PG3-380A ■ LT-PG3-380A-OFM
■ LT-PG3-380B ■ LT-PG3-380B-OFM

Dimensions and Maximum Loads



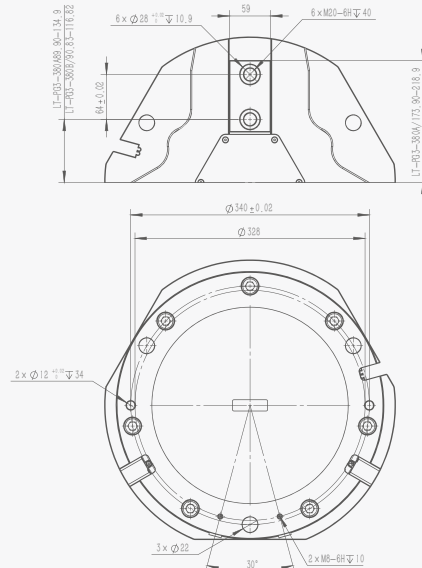
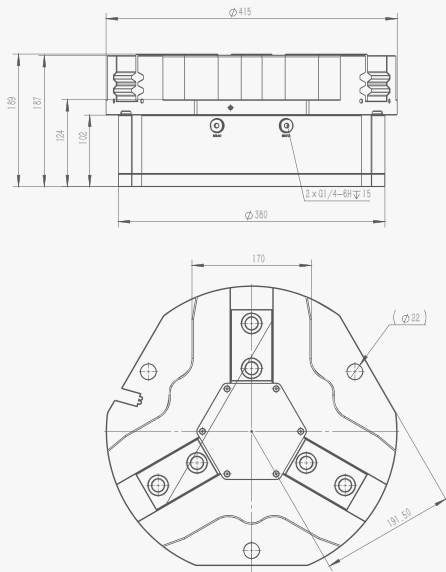
M_x max. 560N.m

M_y max. 560N.m

M_z max. 370N.m

F_z max. 10000N

Dimensions



HOW TO MAKE A QUICK SELECTION

Please follow below steps to make a selection of suitable grippers quickly, and welcome contact with us if you want to know more details.



Confirm the grippers type

Confirm the grippers type by workpiece shape and the grabbing method:
Two-fingers parallel mechanism grippers or Three-finger centering mechanism grippers.



Select grippers model

Select several model of grippers by workpiece weight (the needed clamping force to grab), choose the suitable friction coefficient and safety coefficient, etc.
Product parameters [recommended workpiece weight] are calculated under the premise of friction coefficient 0.1 and safety factor 2, without considering the acceleration of gravity of the robot.
The product parameters closing force and opening force are the arithmetical sum of the gripping forces of all fingers.



Confirm clamping position

Determine the appropriate clamping position and clamping method of the workpiece (inner support, outer clamp, etc.) according to the three-dimensional size and center of mass position of the workpiece.



Calculated finger length

Calculate the finger length required to clamp the workpiece based on the clamping position and working conditions of the workpiece



Verify diagram parameters

According to the length of the finger, check the [Finger Length Allowable Range Chart] to see if it is allowed to be used, and verify whether the clamp output force meets the requirements based on the [Closing Force/Opening Force Chart]



Confirm usage requirements

Determine whether the temperature range, protection level, maximum and minimum air pressure, repeatability, etc. meet the requirements...

SELECTION CONSIDERATIONS

Note1: Select grippers with suitable stroke and finger length

①Single workpiece clamping: When selecting the jaw stroke, friction locking does not need to be considered, but mechanical locking needs to be calculated.

②Multiple workpiece clamping: The stroke of the clamping jaws must be greater than half of the difference between the maximum and minimum dimensions of the workpiece in the same clamping position.

Choose the right finger length: If the fingers are too long, too large, or too heavy, the inertia force or bending moment during the opening and closing movement of the jaws will have an impact on the jaws and the workpiece, which may cause the jaws to perform poorly, the workpiece to be damaged, or the workpiece to fail to hold.

Note 2: Calculate the mass of the workpiece and the required clamping force

①Friction locking (for example)

Friction locking is the process of clamping the workpiece through the static friction force generated by the clamping force. The required clamping force is calculated according to the formula.

$$F_G = \frac{m \times (g+a)}{n \times \mu} \times S$$

F_G : Clamping force per jaw (N)

m : Workpiece weight (kg)

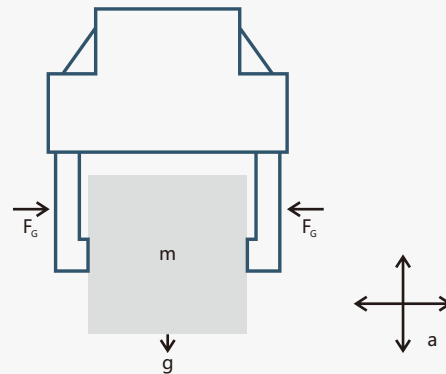
g : Gravitational acceleration

a : Acceleration during dynamic motion (m/s^2)

n : The quantity of fingers

μ : Friction factor between gripper fingers and workpiece

S : Safety factor



②Mechanical locking (for example)

$$F_G = m \times (g+a) \times S$$

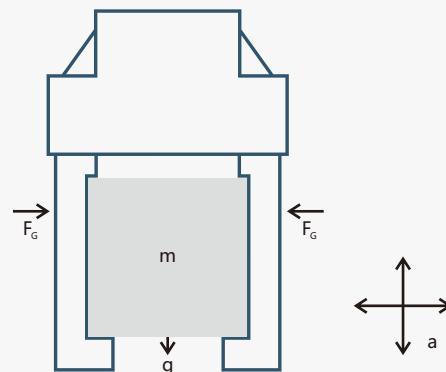
F_G : Clamping force per jaw (N)

m : Workpiece weight (kg)

g : Gravitational acceleration

a : Acceleration during dynamic motion (m/s^2)

S : Safety factor



Special Note:

1. The force holding type can be used as a single direction force enhanced grippers, but it cannot be used alone as force enhanced grippers.
2. If the force holding function is required when grasping the workpiece, in addition to relying on the force holding function of the gripper, a pressure holding valve and other equipment must also be configured.
3. For other unmentioned matters, please refer to the relevant product instruction manual.

JAW QUICK CHANGE DEVICE



Quick finger change design :

No tools required for instant finger change, improve operational flexibility and efficiency, and reduce downtime.



Wide compatibility and efficient operation :

Compact and optimized structure design, suitable for a variety of general purpose grippers, improve the overall production efficiency and compatibility.



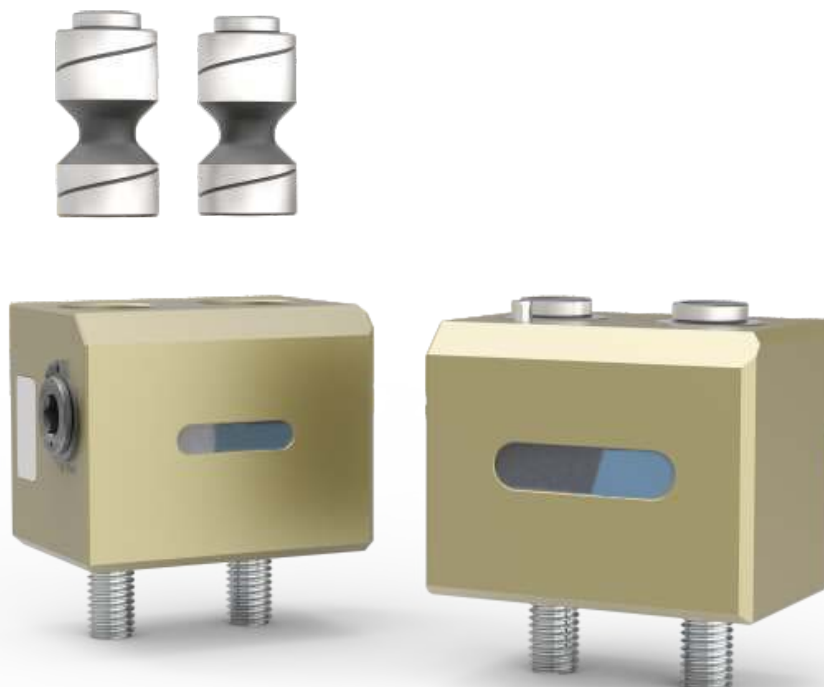
High precision clamping positioning :

The precision clamping mechanism ensures that each operation can achieve a highly accurate positioning and ensure the stability of the operation.



Super durable material construction :

Adaption of ultra-high strength steel and high-strength aluminum alloy material significantly improves durability and service life, reduces maintenance costs, and adapts to high-strength working environment.



Model: LT-JQC-50SKseries

Jaw quick-change device	LT-JQC-50SKB	LT-JQC-50SKB-P
Item No.	F23010036	F23010041
Locking methods	Wrench tightening	Manual pressing
Weight (kg) (excluding location pins)	0.025	0.03
Max. allowable torque load (N.m)	13	13
Maximum allowable force (Fx/N)	345	345
Min./Max. suitable temperature (°C)	5/130	5/130
Jaw location pin	LT-JQC-50SKA	
Item No.	F23010037	
Weight (kg) (2 per set)	0.005	
Material	42CrMo	
Min./Max. suitable temperature (°C)	5/130	

Note: The number of finger quick change devices depends on the type of gripper, and the number of finger location pins depends on the number of grippers' fingers.

Model: LT-JQC-64SKseries

Jaw quick-change device	LT-JQC-64SKB	LT-JQC-64SKB-P
Item No.	F23010043	F23010044
Locking methods	Wrench tightening	Manual pressing
Weight (kg) (excluding location pins)	0.04	0.045
Max. allowable torque load (N.m)	28	28
Maximum allowable force (Fx/N)	505	505
Min./Max. suitable temperature (°C)	5/130	5/130
Jaw location pin	LT-JQC-64SKA	
Item No.	F23010042	
Weight (kg) (2 per set)	0.011	
Material	42CrMo	
Min./Max. suitable temperature (°C)	5/130	

Note: The number of finger quick change devices depends on the type of gripper, and the number of finger location pins depends on the number of grippers' fingers.

Model: LT-JQC-80SKseries

Jaw quick-change device	LT-JQC-80SKB	LT-JQC-80SKB-P
Item No.	F23010035	F23010046
Locking methods	Wrench tightening	Manual pressing
Weight (kg) (excluding location pins)	0.08	0.07
Max. allowable torque load (N.m)	62	62
Maximum allowable force (Fx/N)	1070	1070
Min./Max. suitable temperature (°C)	5/130	5/130
Jaw location pin	LT-JQC-80SKA	
Item No.	F23010034	
Weight (kg) (2 per set)	0.022	
Material	42CrMo	
Min./Max. suitable temperature (°C)	5/130	

Note: The number of finger quick change devices depends on the type of gripper, and the number of finger location pins depends on the number of grippers' fingers.

Model: LT-JQC-100SKseries

Jaw quick-change device	LT-JQC-100SKB	LT-JQC-100SKB-P
Item No.	F23010031	F23010040
Locking methods	Wrench tightening	Manual pressing
Weight (kg) (excluding location pins)	0.13	0.13
Max. allowable torque load (N.m)	104	104
Maximum allowable force (Fx/N)	1950	1950
Min./Max. suitable temperature (°C)	5/130	5/130
Jaw location pin	LT-JQC-100SKA	
Item No.	F23010030	
Weight (kg) (2 per set)	0.05	
Material	42CrMo	
Min./Max. suitable temperature (°C)	5/130	

Note: The number of finger quick change devices depends on the type of gripper, and the number of finger location pins depends on the number of grippers' fingers.

Model: LT-JQC-125SKseries

Jaw quick-change device	LT-JQC-125SKB	LT-JQC-125SKB-P
Item No.	F23010033	F23010045
Locking methods	Wrench tightening	Manual pressing
Weight (kg) (excluding location pins)	0.22	0.21
Max. allowable torque load (N.m)	220	220
Maximum allowable force (Fx/N)	2810	2810
Min./Max. suitable temperature (°C)	5/130	5/130
Jaw location pin	LT-JQC-125SKA	
Item No.	F23010032	
Weight (kg) (2 per set)	0.1	
Material	42CrMo	
Min./Max. suitable temperature (°C)	5/130	

Note: The number of finger quick change devices depends on the type of gripper, and the number of finger location pins depends on the number of grippers' fingers.

Model: LT-JQC-160SKseries

Jaw quick-change device	LT-JQC-160SKB	LT-JQC-160SKB-P
Item No.	F23010038	F23010047
Locking methods	Wrench tightening	Manual pressing
Weight (kg) (excluding location pins)	0.44	0.43
Max. allowable torque load (N.m)	305	305
Maximum allowable force (Fx/N)	5350	5350
Min./Max. suitable temperature (°C)	5/130	5/130
Jaw location pin	LT-JQC-160SKA	
Item No.	F23010039	
Weight (kg) (2 per set)	0.15	
Material	42CrMo	
Min./Max. suitable temperature (°C)	5/130	

Note: The number of finger quick change devices depends on the type of gripper, and the number of finger location pins depends on the number of grippers' fingers.

Model: LT-JQC-200-P

Jaw quick-change device	LT-JQC-200B-P	Item No.: F23010018
Weight (kg) (excluding location pins)	0.77	
Max. allowable torque load (N.m)	510	
Maximum allowable force (Fx/N)	6110	
Min./Max. suitable temperature (°C)	5/130	
Jaw location pin	LT-JQC-200A-P	Item No.: F23010017
Weight (kg) (2 per set)	0.32	
Material	42CrMo	
Min./Max. suitable temperature (°C)	5/130	

Note: The number of finger quick change devices depends on the type of gripper, and the number of finger location pins depends on the number of grippers' fingers.

Model: LT-JQC-240-P

Jaw quick-change device	LT-JQC-240B-P	Item No.: F23010022
Weight (kg) (excluding location pins)	1.35	
Max. allowable torque load (N.m)	880	
Maximum allowable force (Fx/N)	9330	
Min./Max. suitable temperature (°C)	5/130	
Jaw location pin	LT-JQC-240A-P	Item No.: F23010021
Weight (kg) (2 per set)	0.62	
Material	42CrMo	
Min./Max. suitable temperature (°C)	5/130	

Note: The number of finger quick change devices depends on the type of gripper, and the number of finger location pins depends on the number of grippers' fingers.

Model: LT-JQC-300-P

Jaw quick-change device	LT-JQC-300B-P	Item No.: F23010020
Weight (kg) (excluding location pins)	1.8	
Max. allowable torque load (N.m)	1220	
Maximum allowable force (Fx/N)	12420	
Min./Max. suitable temperature (°C)	5/130	
Jaw location pin	LT-JQC-300A-P	Item No.: F23010019
Weight (kg) (2 per set)	0.79	
Material	42CrMo	
Min./Max. suitable temperature (°C)	5/130	

Note: The number of finger quick change devices depends on the type of gripper, and the number of finger location pins depends on the number of grippers' fingers.