

MAOB oval bellows suction cup for sheet metal

Size:60X30-110X55mm

Material:N45、N60、HT1



Sheet metal



Bar



Skid resistance



Greasy surface

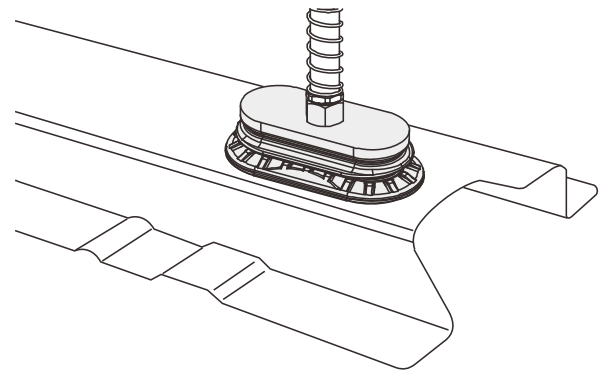


Introduction

- A 1.5-fold oval bellows structure
- A large-area internal support structure with patterns
- Complete sizes
- Applicable to gripping long bar-shaped workpieces with even surfaces or surfaces curved to a certain degree
- Can effectively increase the friction between the suction cup and the workpiece
- Applicable to workpieces of different sizes and in different shapes

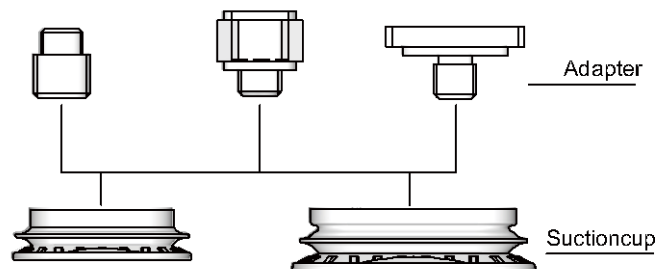
Application

- Quickly handles long thin metal pieces in a short cycle
- No deformation of handled metal sheets or aluminum plates
- Handles stamped metal automotive parts



Structure

- A 1.5-fold bellows structure designed
- The joint is designed to be integrated with the suction cup



波紋吸盤 MAOB 訂購指南

MAOB 60× 30 N45 G1/4-AG

① ② ③ ④

| ① Product series | ② Size specification | ③ Material and Shore hardness | ④ Joint specification |
|------------------|-----------------------------|----------------------------------------|-----------------------------------|
| MAOB | 60× 30 - (Lx W) 60× 30mm | N45 - nitrile rubber - 45° | G1/4-AG - G1/4 male thread |
| | 80× 40 - (Lx W) 80× 40mm | N60 - nitrile rubber - 60° | G1/4-IG - G1/4 female thread |
| | 110× 55 - (Lx W) 110× 55mm | HT1 - High temperature resistant - 60° | G3/8-IG - G3/8 female thread |
| | | | M10×1.5-AG - M10×1.5 male thread |
| | | | M14×1.5-AG - M14×1.5 male thread |
| | | | RA rectangular adapter |
| | | | Note:AG=MalethreadIG=Femalethread |

Model specifications

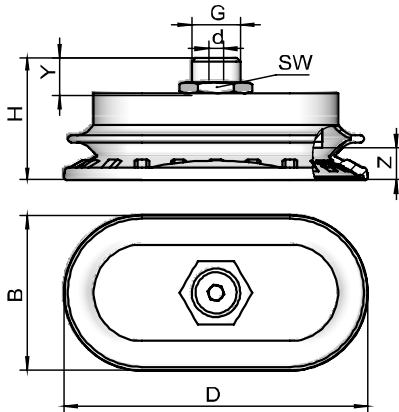
| Model specification | G1/4-AG | G1/4-IG | G3/8-IG | M10-AG | M14× 1.5-AG | RA rectangular adapter |
|---------------------|---------|---------|---------|--------|-------------|------------------------|
| MAOB 60× 30... | ● | ● | ● | ● | ● | ● |
| MAOB 80× 40... | ● | ● | ● | ● | ● | ● |
| MAOB 110× 55... | ● | ● | ● | ● | ● | ● |

Technical parameters

| Model | Suction force N | Detaching force N | Lateral force N | Lateral force applied to greasy surface N | Internal Volume cm ³ | Minimum radius of curvature of workpiece mm (convex) |
|----------------|--------------------|----------------------|--------------------|-------------------------------------------------|------------------------------------|------------------------------------------------------------|
| MAOB 60x30... | 38 | 55 | 57 | 52 | 9.6 | 30 |
| MAOB 80x40... | 65 | 100 | 100 | 95 | 20.6 | 40 |
| MAOB 110x55... | 110 | 185 | 180 | 161 | 50.8 | 50 |

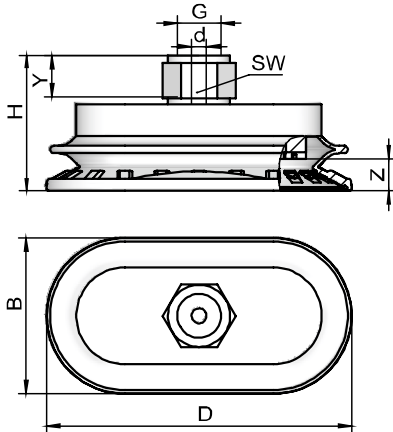
Design parameters

MAOB 60× 30 to 110× 55 □AG



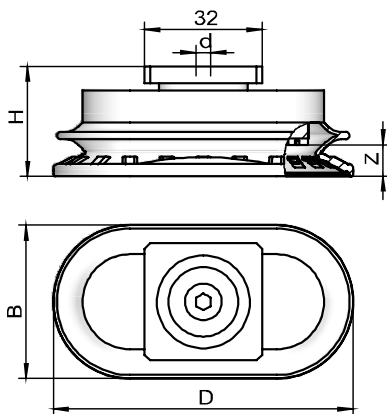
| Model | Size (mm) | | | | | | | | G |
|--------------------------|-----------|----|---|------|----|----|----|------------|---|
| | D | B | d | H | Y | Z | SW | | |
| MAOB 60x30 □ G1/4-AG | 62 | 32 | 5 | 29.5 | 8 | 7 | 17 | G1/4-AG | |
| MAOB 60x30 □ M10x1.5-AG | 62 | 32 | 4 | 31.5 | 10 | 7 | 16 | M10x1.5-AG | |
| MAOB 60x30 □ M14x1.5-AG | 62 | 32 | 5 | 33.5 | 10 | 7 | 22 | M14x1.5-AG | |
| MAOB 80x40 □ G1/4-AG | 82 | 43 | 5 | 34.0 | 8 | 9 | 17 | G1/4-AG | |
| MAOB 80x40 □ M10x1.5-AG | 82 | 43 | 4 | 36.0 | 10 | 9 | 16 | M10x1.5-AG | |
| MAOB 80x40 □ M14x1.5-AG | 82 | 43 | 5 | 38.0 | 10 | 9 | 22 | M14x1.5-AG | |
| MAOB 110x55 □ G1/4-AG | 114 | 59 | 6 | 38.5 | 8 | 13 | 17 | G1/4-AG | |
| MAOB 110x55 □ M10x1.5-AG | 114 | 59 | 4 | 40.5 | 10 | 13 | 16 | M10x1.5-AG | |
| MAOB 110x55 □ M14x1.5-AG | 114 | 59 | 6 | 42.5 | 10 | 13 | 22 | M14x1.5-AG | |

MAOB 60× 30 to 110× 55 □IG



| Model | Size (mm) | | | | | | | | G |
|-----------------------|-----------|----|---|------|---|----|----|---------|---|
| | D | B | d | H | Y | Z | SW | | |
| MAOB 60x30 □ G1/4-IG | 62 | 32 | 6 | 33.0 | 8 | 7 | 17 | G1/4-IG | |
| MAOB 60x30 □ G3/8-IG | 62 | 32 | 6 | 33.5 | 9 | 7 | 22 | G3/8-IG | |
| MAOB 80x40 □ G1/4-IG | 82 | 43 | 6 | 37.5 | 8 | 9 | 17 | G1/4-IG | |
| MAOB 80x40 □ G3/8-IG | 82 | 43 | 6 | 38.0 | 9 | 9 | 22 | G3/8-IG | |
| MAOB 110x55 □ G1/4-IG | 114 | 59 | 8 | 42.0 | 8 | 13 | 17 | G1/4-IG | |
| MAOB 110x55 □ G3/8-IG | 114 | 59 | 8 | 42.5 | 9 | 13 | 22 | G3/8-IG | |

MAOB 60× 30 to 110× 55 □RA (rectangular adapter)



| Model | Size (mm) | | | | |
|------------------|-----------|----|---|------|----|
| | D | B | d | H | Z |
| MAOB 60x30 □ RA | 62 | 32 | 4 | 26.7 | 7 |
| MAOB 80x40 □ RA | 82 | 43 | 4 | 31.2 | 9 |
| MAOB 110x55 □ RA | 114 | 59 | 4 | 35.7 | 13 |