



MD-CUP composite suction cup

Suction size:15、20、30、40、50mm

Maximum vacuum flow rate:140~650L/min



3C product



New energy



Air permeability

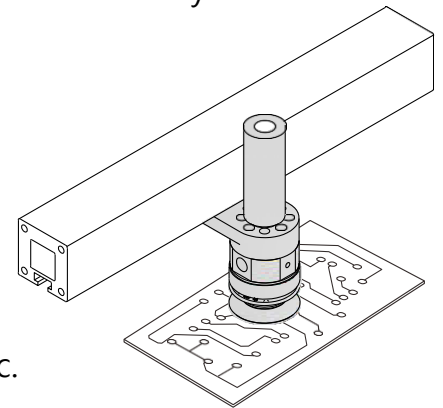


Introduction

- Extremely large vacuum flow
- Generator, suction cup and silencer integrated
- Vertical and horizontal mounting modes
- Static-proof rubber suction cup, gentle contact, strong suction force, workpiece surface protection
- Gentle contact without scratching the workpiece being gripped and handled
- Large vacuum flow appropriate to loose and porous workpieces
- Easy mounting with fittings and elements that can be selected according to the actual operating conditions
- Simple structure, integral design, compressed air connected directly without additional generator

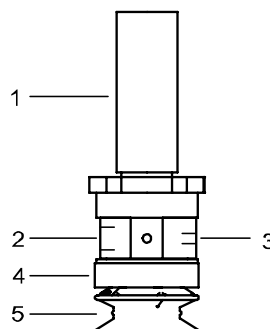
Application

- Applicable to handling breathable workpieces such as PCBs and PVC boards
- Applicable to the food industry, e.g. biscuits, bread, etc.
- Applicable to suctioning irregular profiled workpieces



Structure

- (1) Silencing tube
- (2) Compressed air inlet
- (3) Vacuum port
- (4) Connection fastener
- (5) Suction surface



purchase guide

MD AB10 20 CUP B-S30

① ② ③ ④ ⑤

① Product series	② Mounting mode and generator type	③ Size specification	④ Suction cup specification	⑤ Material and hardness
MD	AB10 - Vertical mounting (vacuum degree - 9Kpa)	15 - φ 15mm 20 - φ 20mm	CUP	B-S30 – 30° silicone H-S50 – 50° silicone
	AB20 - Vertical mounting (vacuum degree - 17Kpa)	30 - φ 30mm		B -GS30 - 30° static-proof silicone rubber (Anti-static index:10 ⁵ –10 ⁹)
	SB10 - Horizontal mounting (vacuum degree - 9Kpa)	40 - φ 40mm		H - GS50 - 50° static-proof silicone rubber (Anti-static index:10 ⁵ –10 ⁹)
	SB20 - Horizontal mounting (vacuum degree - 17Kpa)	50 - φ 50mm		

Model specifications

Model specification	AB10	AB20	SB10	SB20
MD□ 15...	●	●	●	●
MD□ 20...	●	●	●	●
MD□ 30...	●	●	●	●
MD□ 40...	●	●	●	●
MD□ 50...	●	●	●	●

Model specifications of spare fittings and elements

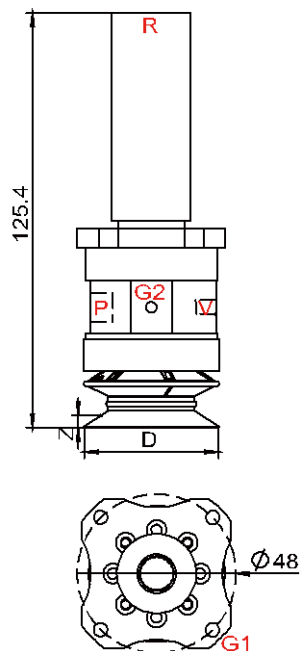
Model	Silencer	CUP B-S30	CUP H-S50	CUP B-GS30	CUP H-GS50
MD□ 15...	ZSA G3/8-AG	-	15 CUP H-S50	-	15 CUP H-GS50
MD□ 20...	ZSA G3/8-AG	20 CUP B-S30	20 CUP H-S50	20 CUP B-GS30	20 CUP H-GS50
MD□ 30...	ZSA G3/8-AG	30 CUP B-S30	30 CUP H-S50	30 CUP B-GS30	30 CUP H-GS50
MD□ 40...	ZSA G3/8-AG	40 CUP B-S30	40 CUP H-S50	40 CUP B-GS30	40 CUP H-GS50
MD□ 50...	ZSA G3/8-AG	50 CUP B-S30	50 CUP H-S50	50 CUP B-GS30	50 CUP H-GS50

Technical parameters

Model	Maximum vacuum degree kPa	Maximum vacuum flow rate l/min	Air consumption l/min	Air intake pressure KG	Weight g
MD AB10...	-9	140...350	40...140	1...5	109
MD AB20...	-17	270...650	60...220	1...5	109
MD SB10...	-9	140...350	40...140	1...5	132.7
MD SB20...	-17	270...650	60...220	1...5	132.7

Design parameters

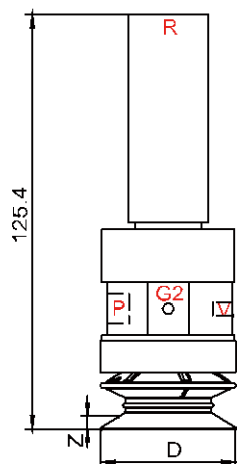
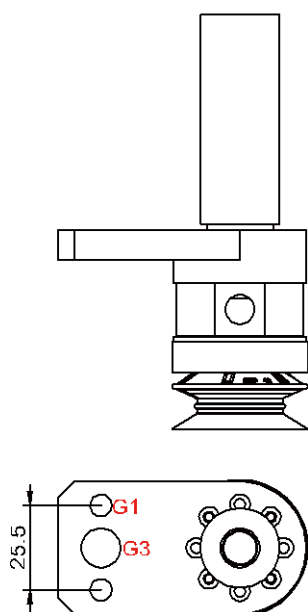
Vertical mounting MD AB...CUP



- P**: Compressed air inlet (G1/8)
- R**: Exhaust port
- V**: Vacuum port (M5)
- G1**: Mounting hole (4-M5)
- G2**: Mounting hole (2-M4)

Model	Size (mm)	
	Z	D
MD AB10 15 CUP	1.0	15
MD AB20 15 CUP	1.0	15
MD AB10 20 CUP	1.5	20
MD AB20 20 CUP	1.5	20
MD AB10 30 CUP	2.8	30
MD AB20 30 CUP	2.8	30
MD AB10 40 CUP	3.7	40
MD AB20 40 CUP	3.7	40
MD AB10 50 CUP	4.2	50
MD AB20 50 CUP	4.2	50

Horizontal mounting MD SB...CUP



- P**: Compressed air inlet (G1/8)
- R**: Exhaust port
- V**: Vacuum port (M5)
- G1**: Mounting hole (2-φ6.6)
- G2**: Mounting hole (2-M4)
- G3**: Mounting hole (G1/4)

Model	Size (mm)	
	Z	D
MD SB10 15 CUP	1.0	15
MD SB20 15 CUP	1.0	15
MD SB10 20 CUP	1.5	20
MD SB20 20 CUP	1.5	20
MD SB10 30 CUP	2.8	30
MD SB20 30 CUP	2.8	30
MD SB10 40 CUP	3.7	40
MD SB20 40 CUP	3.7	40
MD SB10 50 CUP	4.2	50
MD SB20 50 CUP	4.2	50