



## MD-PEEK Composite suction cup

Size:146X146、100X60mm

130X65、170X105mm

Maximum vacuum flow rate:140~650L/min



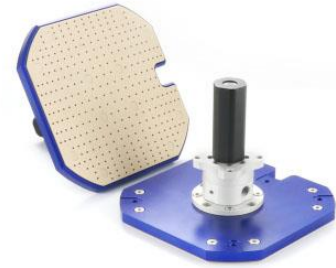
New energy



Composite material



Air permeability

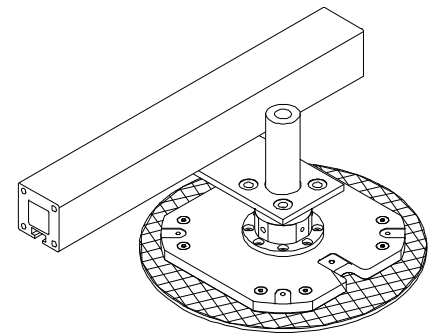


### Introduction

- Handling without any contamination or influence on the subsequent product process
- Vacuum generator, suction cup and silencer integrated
- Suction cup's contact side: PEEK material
- A detection sensor can be mounted to the main body

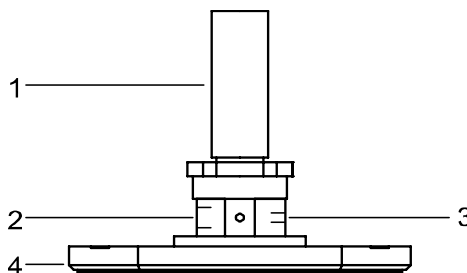
### Application

- Applicable to handling fragile products such as photovoltaic cells, solar cells, glass



### Structure

- (1) Silencing tube
- (2) Compressed air inlet
- (3) Vacuum port
- (4) Suction surface



## purchase guide

### MD AB10 146× 146 PEEK

①                      ②                      ③                      ④

① Product series	② Mounting mode and generator type	③ Size specification	④ Material
MD	AB10 - Vertical mounting (vacuum degree - 9Kpa) AB20 - Vertical mounting (vacuum degree - 17Kpa) SB10 - Horizontal mounting (vacuum degree - 9Kpa) SB20 - Horizontal mounting (vacuum degree - 17Kpa)	146× 146 100× 60 170× 105 130× 65  Can be non-standard customized	PEEK

## Model specifications

Model specification	AB10	AB20	SB10	SB20
MD □ 146× 146 PEEK	●	●	●	●
MD □ 100× 60 PEEK	●	●	●	●
MD □ 170× 105 PEEK	●	●	●	●
MD □ 130× 65 PEEK	●	●	●	●

## Model specifications of spare fittings and elements

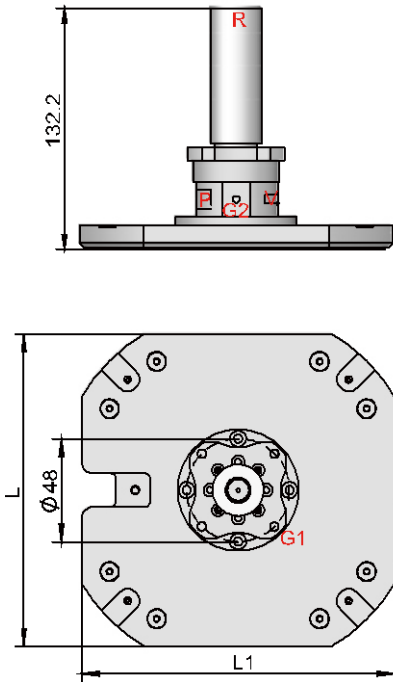
Model	Silencer
MD □ 146× 146 PEEK	ZSA G3/8-AG
MD □ 100× 60 PEEK	ZSA G3/8-AG
MD □ 170× 105 PEEK	ZSA G3/8-AG
MD □ 130× 65 PEEK	ZSA G3/8-AG

## Technical parameters

Model	Maximum vacuum degree kPa	Maximum vacuum flow rate l/min	Air consumption l/min	Air intake pressure KG	Weight g
MD AB10...	-9	140...350	40...140	1...5	121.1
MD AB20...	-17	270...650	60...220	1...5	121.1
MD SB10...	-9	140...350	40...140	1...5	144.8
MD SB20...	-17	270...650	60...220	1...5	144.8

## Design parameters

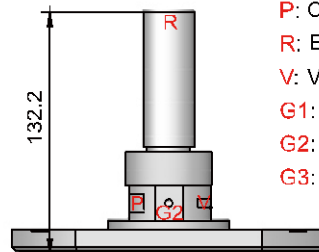
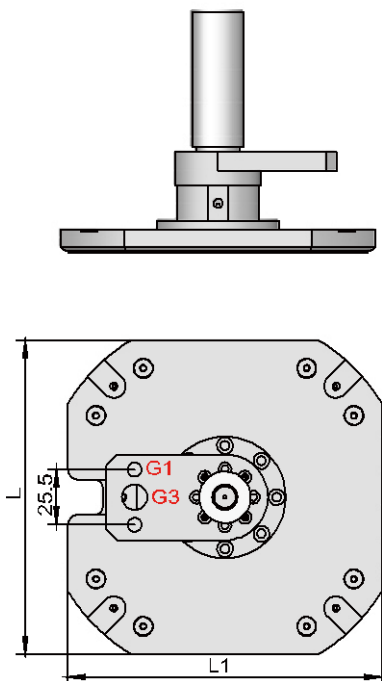
Vertical mounting MD AB...PEEK



Model	Size (mm)	
	L	L1
MD AB10 146X146 PEEK	146	146
MD AB20 146X146 PEEK	146	146
MD AB10 100X60 PEEK	60	100
MD AB20 100X60 PEEK	60	100
MD AB10 170X105 PEEK	105	170
MD AB20 170X105 PEEK	105	170
MD AB10 130X65 PEEK	65	130
MD AB20 130X65 PEEK	65	130

- P: Compressed air inlet (G1/8)
- R: Exhaust port
- V: Vacuum port (M5)
- G1: Mounting hole (4-M5)
- G2: Mounting hole (2-M4)

Horizontal mounting MD SB...PEEK



- P: Compressed air inlet (G1/8)
- R: Exhaust port
- V: Vacuum port (M5)
- G1: Mounting hole (2-φ6.6)
- G2: Mounting hole (2-M4)
- G3: Mounting hole (G1/4)

Model	Size (mm)	
	L	L1
MD SB10 146X146 PEEK	146	146
MD SB20 146X146 PEEK	146	146
MD SB10 100X60 PEEK	60	100
MD SB20 100X60 PEEK	60	100
MD SB10 170X105 PEEK	105	170
MD SB20 170X105 PEEK	105	170
MD SB10 130X65 PEEK	65	130
MD SB20 130X65 PEEK	65	130