



## MNG-M needle gripper



Composite material



Textile



Air permeability



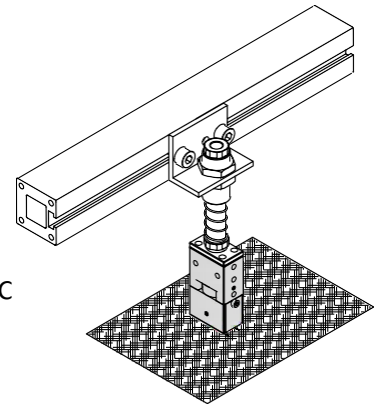
### Introduction

- The small needles are inserted shallowly and can be quickly released
- Handle air permeable thin workpiece
- Adjustable needles' stroke
- Double-row needles



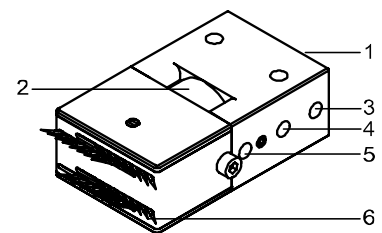
### Application

- Handling materials that are difficult to grip using vacuum, such as composite textiles, wool, filters, woven glass fibers or carbon fibers, woven aromatic polyamide fibers, foam materials, etc



### Structure

- (1) Main body
- (2) Stroke adjusting nut
- (3) Compressed air inlet control needle sticking out
- (4) Compressed air inlet control needle retracted
- (5) Compressed air back-blowing port
- (6) Steel needle



purchase guide

**MNG-M 20x35**

①

②

① Product series    ② Size

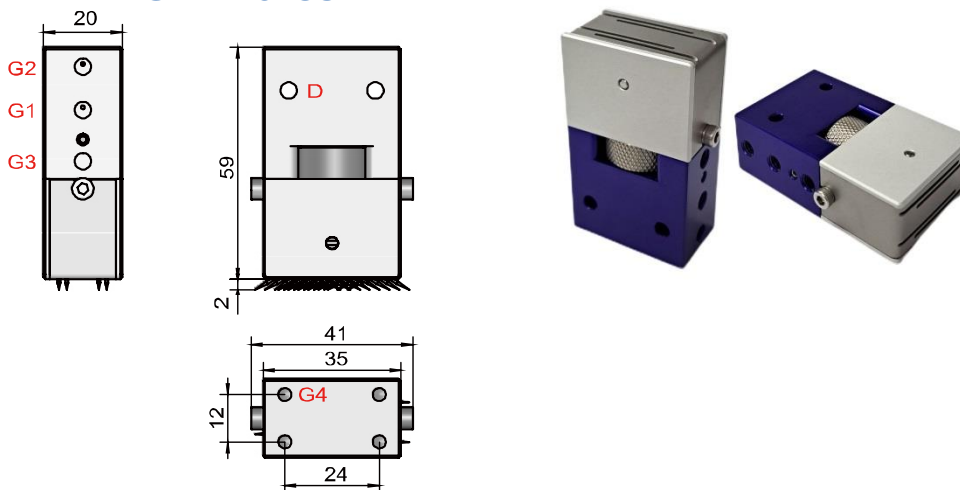
|       |       |        |
|-------|-------|--------|
| MNG-M | 20x35 | 30x45  |
|       | 20x45 | 30x70  |
|       | 20x70 | 30x120 |

Technical parameters

| Model        | Pressure range | Clamping force | Stoke   | Number of steel needles | Weight |
|--------------|----------------|----------------|---------|-------------------------|--------|
| MNG-M 20x35  | 0.5-0.8Mpa     | 18N            | 0.1-5mm | 32                      | 110    |
| MNG-M 20x45  |                | 18N            |         | 20                      | 160    |
| MNG-M 20x70  |                | 26N            |         | 36                      | 170    |
| MNG-M 30x45  |                | 29N            |         | 20                      | 190    |
| MNG-M 30x70  |                | 38N            |         | 36                      | 200    |
| MNG-M 30x120 |                | 50N            |         | 48                      | 240    |

Design parameters

■ MNG-M 20x35

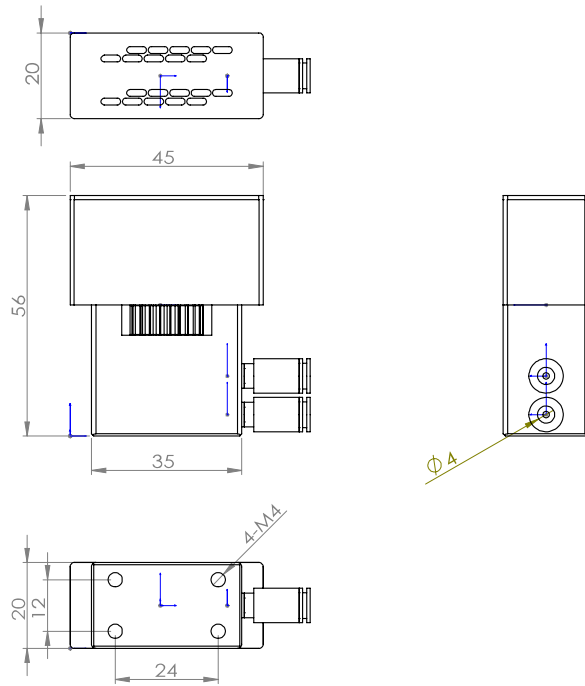


- G1: Compressed air inlet (M5)
- G2: Compressed air inlet (M5)
- G3: Blowing port (M5)
- G4: Mounting hole (M4)
- D: Mounting hole (φ4.2)

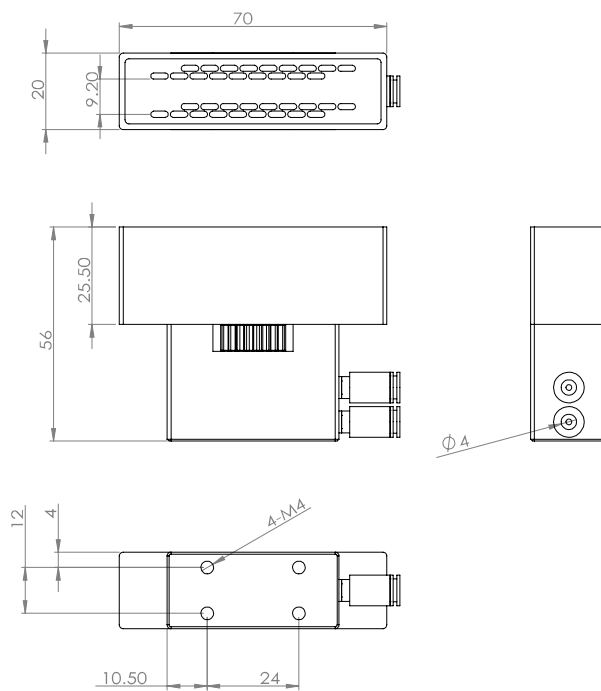
Needle Diameter: Ø0.7mm



## ■ MNG-M 20x45

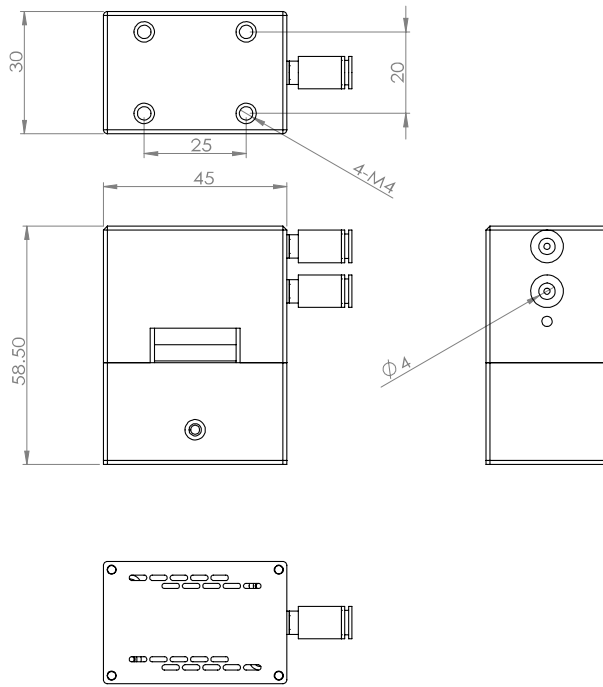


## ■ MNG-M 20x70

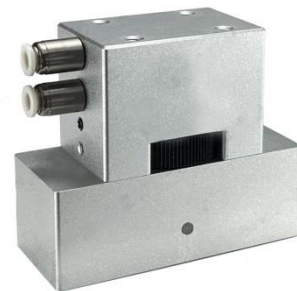
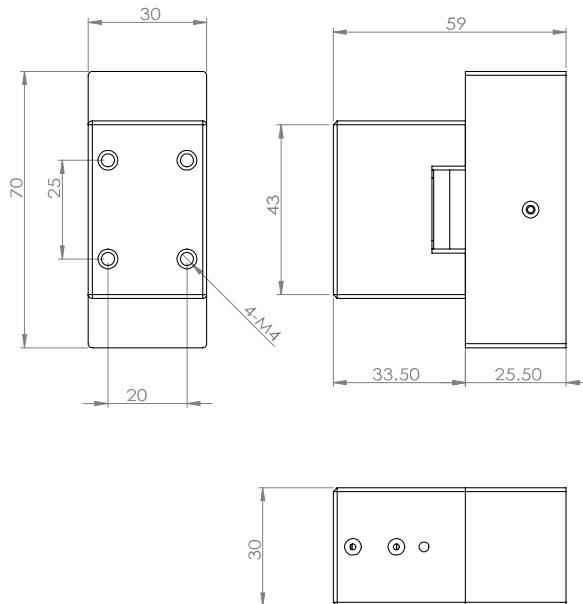




## ■ MNG-M 30x45

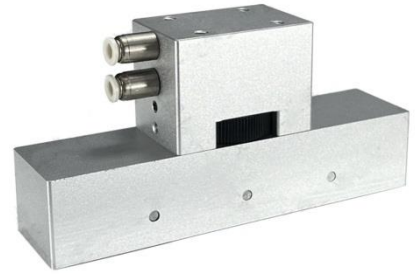
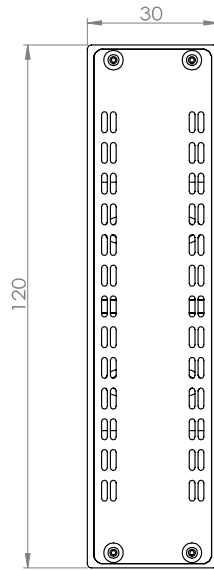
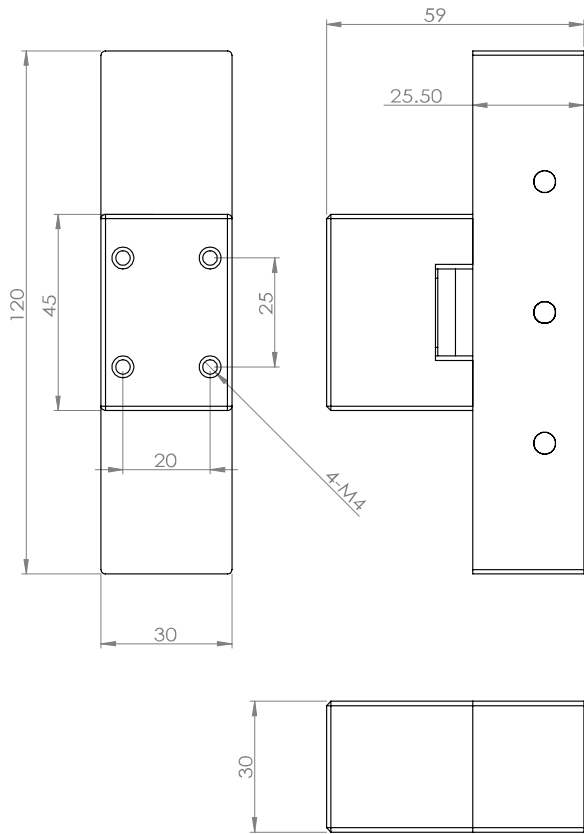


## ■ MNG-M 30x70

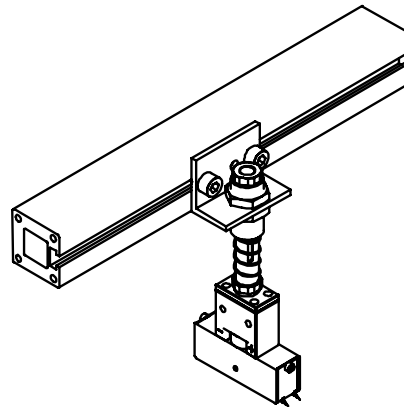
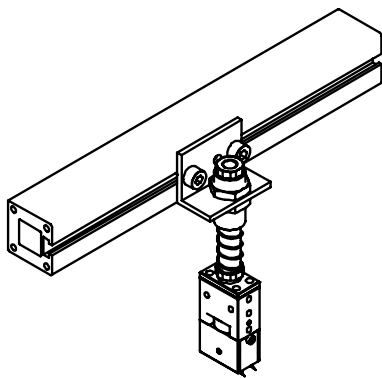




■ MNG-M 30x120



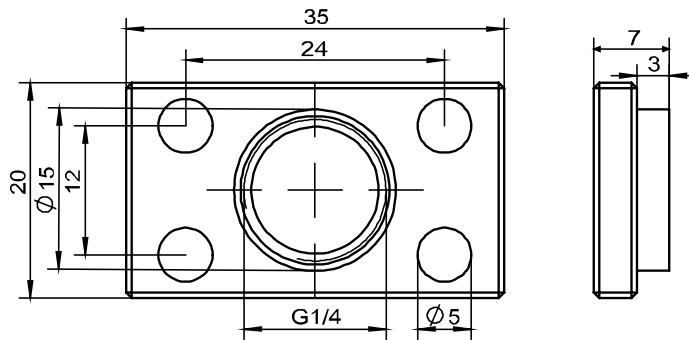
installation illustration





## Mounting plate design parameters

MNG-M FL



## Model specifications of fittings

| Name                          | Model    |
|-------------------------------|----------|
| Needle gripper mounting plate | MNG-M FL |

## Recommended buffer plunger specifications

| Name           | Model           |
|----------------|-----------------|
| Buffer plunger | MTE G1/4-AG□-VG |