

MP2-MB Vacuum suction cup -Traceless Static-proof

Size: 4–20mm

Material: N, S, GN, GS, GHN



3C product

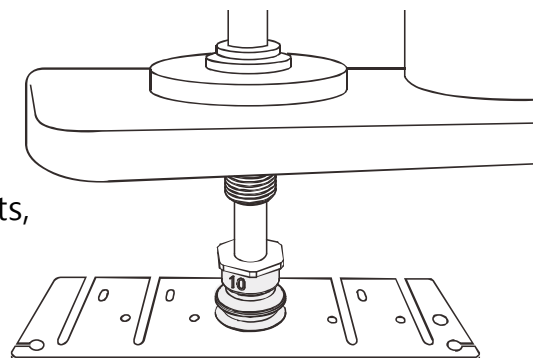


Introduction

- 1.5-fold bellows suction cup
- Soft and taper sealing part
- Complete sizes
- Workpiece height difference compensation, and good buffering during contact with the workpiece
- Good sealing during handling of workpieces with uneven surfaces
- Applicable to workpieces of different sizes and in different shapes

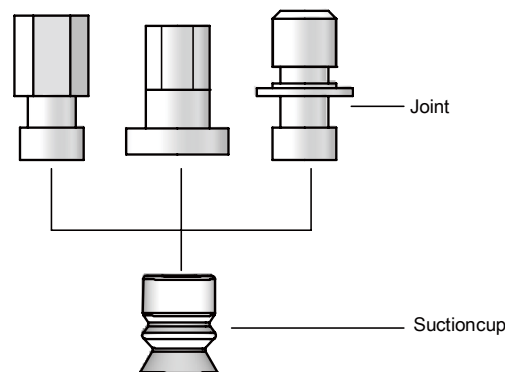
Application

- Handles fragile workpieces such as electronic components, injection-molded parts, electronic displays, etc.



Structure

- With a split structure design, vulnerable elements can be easily replaced



purchase guide

MP2 - B04 MB N - A3

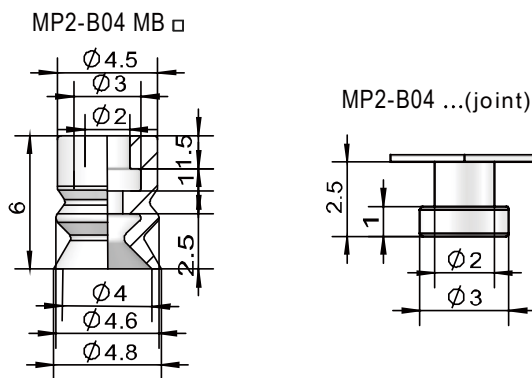
- ① ② ③ ④ ⑤

① Product series	② Size specification	③ Shape specification	④ Material of suction cup	⑤ Joint specification
MP2	B04 - φ4mm B06 - φ6mm B08 - φ8mm B10 - φ10mm B15 - φ15mm B20 - φ20mm	MB - Low double-layer	N-nitrilerubber S- siliconerubber F- fluorine rubber GN- static-proofnitrilerubber (Staticresistanceindex:10 ⁵ -10 ⁶) GS- static-proofsiliconerubber (Staticresistanceindex:10 ⁵ -10 ⁶) GHN- tracelessconductive nitrile rubber (Staticresistanceindex:10 ⁵ -10 ⁶)	Null - Bare suction cup A3 - M3×0.5 male thread A5 - M5×0.8 male thread B5 - M5×0.8 female thread

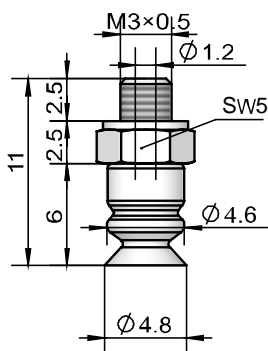
Model specifications

Model specification	Connection specification		
	A3 (M3×0.5 male thread)	A5 (M5×0.8 female thread)	B5 (M5×0.8 female thread)
φ04	●	-	-
φ06	-	●	●
φ08	-	●	●
φ10	-	●	-
φ15	-	●	-
φ20	-	●	-

Design parameters



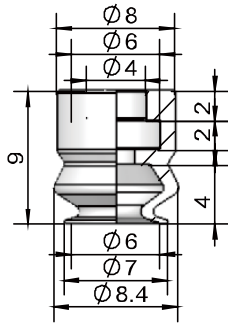
MP2-B04 MB□ -A3 (M3×0.5 male thread)



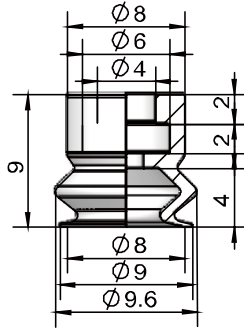
Model	Size (mm)	weight g	Applicable joint model
MP2-B04 MB□ -A3		0.29	MP2A-M01P



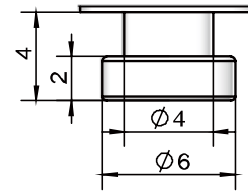
MP2-B06 MB□



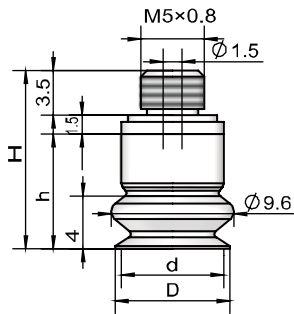
MP2-08 MB□



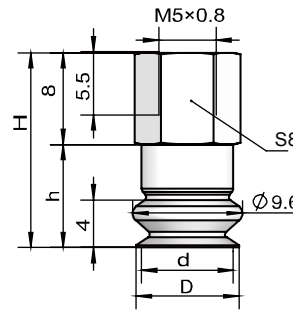
MP2-B06 to 08 ...(joint)



MP2-B06to08 MB□ -A5(M5×0.8 male thread)



MP2-B06to08 MB□ -B5(M5×0.8 female thread)



Model	(mm)				weight g	Applicable joint model
	D	d	H	h		
MP2-B06 MB □ -A5	7	6	14	9	0.77	MP2A-M02P
MP2-B08 MB □ -A5	9	8	14	9	1.17	MP2A-M02P

Model	(mm)				weight g	Applicable joint model
	D	d	H	h		
MP2-B06 MB □ -B5	7	6	17	9	1.58	MP2A-M04
MP2-B08 MB □ -B5	9	8	17	9	1.73	MP2A-M04