



# MP2-MT Vacuum suction cup -Traceless Static-proof

Size: 10–30mm

Material: N, S, GN, GS, GHN



3C product



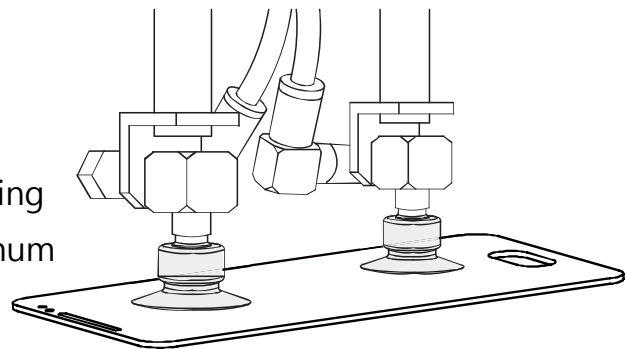
MT-Low grooved surface

## Introduction

- Thin edge, even suction cup surface, short stroke
- With support structure in the bottom
- Complete sizes
- Good sealing performance suitable for light and thin workpieces with even surfaces
- Can prevent paper and film suctioned from being wrinkled
- Applicable to workpieces of different sizes and in different shapes

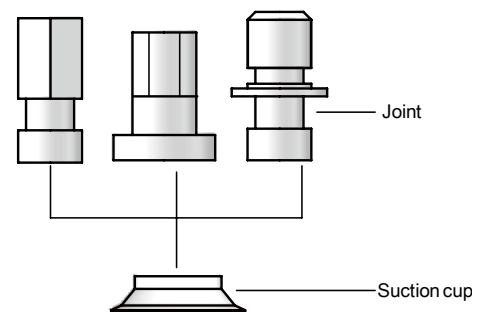
## Application

- Suitable for the application with stringent requirements for traces on the product being handled, such as paper, plastic film, aluminum foil, electronic display, etc.



## Structure

- With a split structure design, vulnerable elements can be easily replaced



purchase guide

**MP2 - B10 MT N -A5**

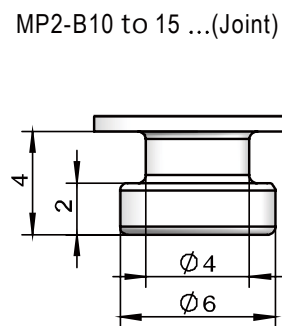
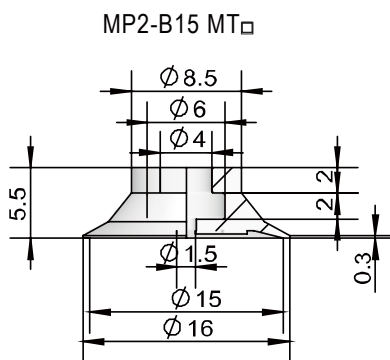
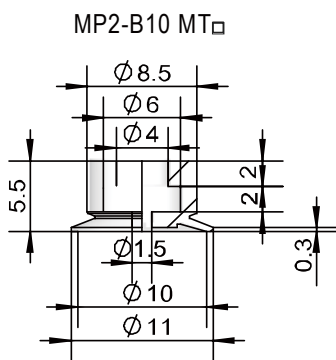
- ① ② ③ ④ ⑤

① Product series	② Size specification	③ Shape specification	④ Material of suction cup	⑤ Joint specification
MP2	B10 - $\phi$ 10mm B15 - $\phi$ 15mm B20 - $\phi$ 20mm B25 - $\phi$ 25mm B30 - $\phi$ 30mm	MT - Low grooved surface	N - nitrilerubber S - siliconerubber F - fluorine rubber GN - static-proofnitrilerubber (Staticresistanceindex:10 <sup>6</sup> -10 <sup>9</sup> ) GS - static-proofsiliconerubber (Staticresistanceindex:10 <sup>6</sup> -10 <sup>9</sup> ) GHN- tracelessconductive nitrilerubber (Staticresistanceindex:10 <sup>6</sup> -10 <sup>9</sup> )	Null - Bare suction cup A5 - M5×0.8 male thread B5 - M5×0.8 female thread

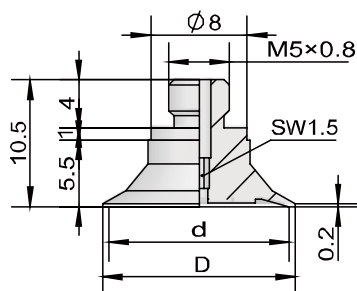
Model specifications

specification	Connection specification	
	A5 (M5×0.8 male thread)	B5 (M5×0.8 female thread)
$\phi$ 10	●	●
$\phi$ 15	●	●
$\phi$ 20	●	-
$\phi$ 25	●	-
$\phi$ 30	●	-

Design parameters

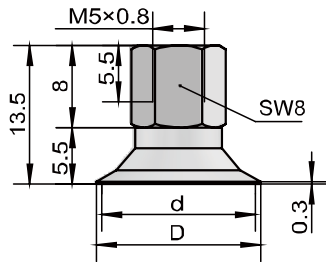


MP2-B10 to 15 MT □ -A5 (M5×0.8 male thread)



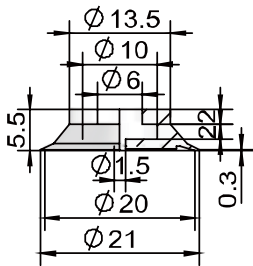
Model	Size[mm]		Weight g	Applicable joint model
	D	d		
MP2-B10 MT □ -A5	11	10	0.78	MP2A-M02P
MP2-B15 MT □ -A5	16	15	0.96	MP2A-M02P

MP2-B10 to 15 MT □ -B5 (M5×0.8 female thread)

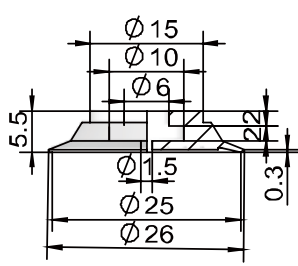


Model	Size[mm]		Weight g	Applicable joint model
	D	d		
MP2-B10 MT □ -B5	11	10	1.62	MP2A-M04
MP2-B15 MT □ -B5	16	15	1.80	MP2A-M04

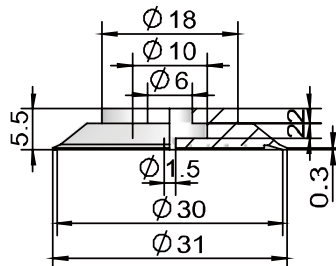
MP2-B20 MT □



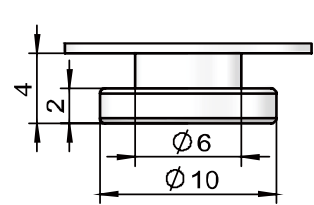
MP2-B25 MT □



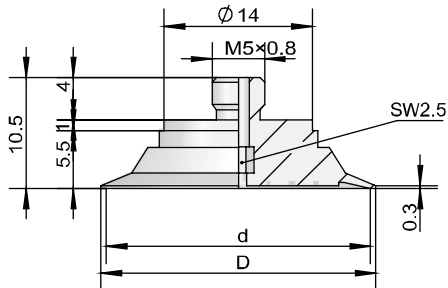
MP2-B30 MT □



MP2-B20 to 30...(joint)



MP2-B20 to 30 MT □ -A5 (M5×0.8 male thread)



Model	Size[mm]		Weight g	Applicable joint model
	D	d		
MP2-B20 MT □ -A5	21	20	2.13	MP2A-M03P
MP2-B25 MT □ -A5	26	25	2.60	MP2A-M03P
MP2-B30 MT □ -A5	31	30	3.62	MP2A-M03P