



MP2-W Vacuum suction cup

-Traceless Static-proof

Size: 3.5X7-8X30mm

Material: N, S, GN, GS, GHN



3C product



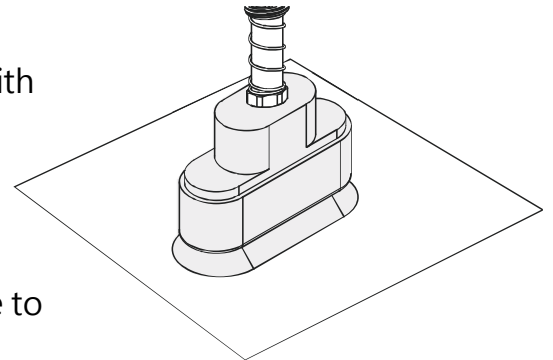
W - Oval flat type

Introduction

- Single-layer oblong suction cup design
- Special static-proof material
- Complete sizes
- Small size and large suction force suitable for handling of long thin workpieces
- Applicable to workpieces of different sizes and in different shapes

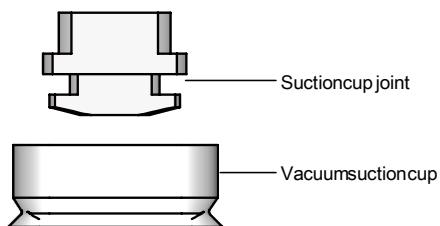
Application

- Suitable for handling long thin workpieces with even surfaces
- Suitable for handling various electronic elements
- The special static-proof material is applicable to the 3C product industry



Structure

- With a split structure design, vulnerable elements can be easily replaced



purchase guide

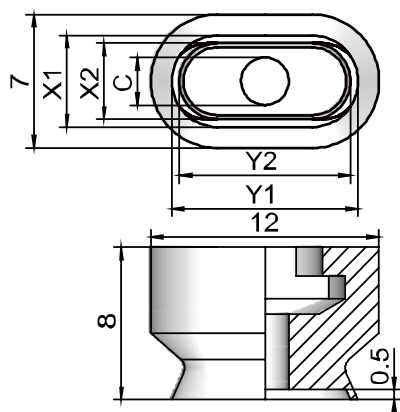
MP2 - 3507 W N - B5

① ② ③ ④ ⑤

① Product series	② Size specification	③ Shape specification	④ Material of suction cup	⑤ Joint specification
MP2	3507 - 3.5× 7mm 4010 - 4× 10mm 5010 - 5× 10mm 6010 - 6× 10mm 4020 - 4× 20mm 5020 - 5× 20mm 6020 - 6× 20mm 8020 - 8× 20mm 4030 - 4× 30mm 5030 - 5× 30mm 6030 - 6× 30mm 8030 - 8× 30mm	W - Oval flat type	N-nitrilerubber S- siliconerubber GN - static-proofnitrilerubber (Staticresistanceindex:10 ⁵ -10 ⁶) GS - static-proofsiliconerubber (Staticresistanceindex:10 ⁵ -10 ⁶) GHN - tracelessconductivenitrilerubber (Staticresistanceindex:10 ⁵ -10 ⁶)	Null - Bare suction cup B5 - M5×0.8 female thread

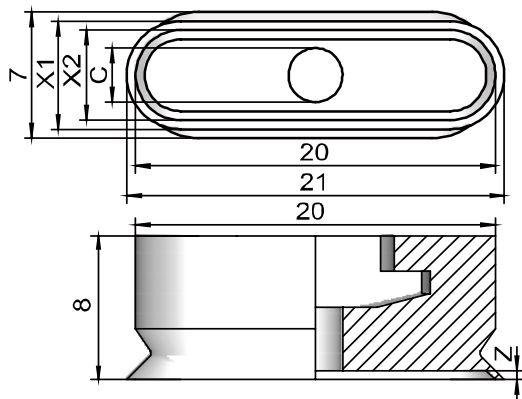
Design parameters

MP2-3507 to 6010 W...



Model	(mm)					weight g	Applicable joint model
	X1	X2	Y1	Y2	C		
MP2-3507W□	4.5	3.5	7	8	1.5	0.42	MP2A-001
MP2-4010W□	5	4	10	11	1.5	0.41	MP2A-001
MP2-5010W□	6	5	10	11	2.5	0.44	MP2A-001
MP2-6010W□	7	6	10	11	2.5	0.42	MP2A-001

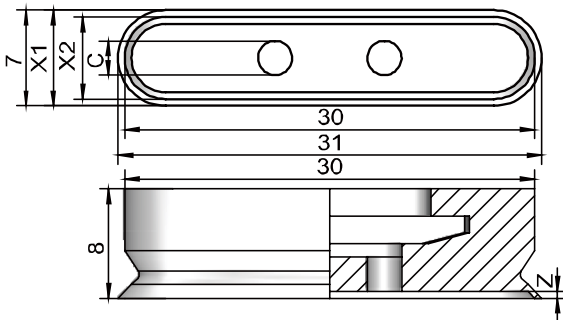
MP2-4020 to 8020 W...



Model	(mm)				weight g	Applicable joint model
	X1	X2	C	Z		
MP2-4020W□	5	4	1.8	0.5	0.76	MP2A-002
MP2-5020W□	6	5	2	0.5	0.81	MP2A-002
MP2-6020W□	7	6	2.5	0.5	0.80	MP2A-002
MP2-8020W□	9	8	3	0.8	0.80	MP2A-002

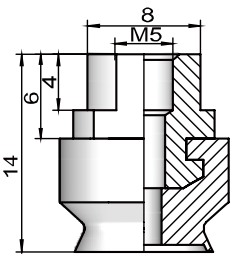
Design parameters

MP2-4030 to 8030 W...

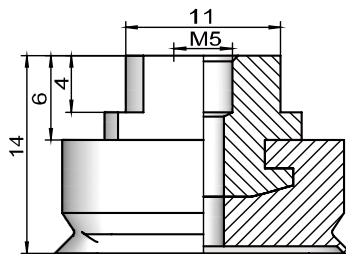


Model	(mm)				weight g	Applicable joint model
	X1	X2	C	Z		
MP2-4030W□	5	4	1.8	0.5	1.24	MP2A-003
MP2-5030W□	6	5	2.5	0.5	1.26	MP2A-003
MP2-6030W□	7	6	2.5	0.5	1.24	MP2A-003
MP2-8030W□	9	8	2.5	0.8	1.25	MP2A-003

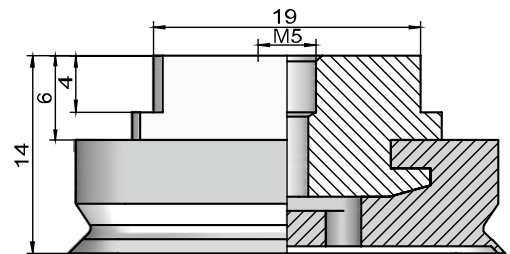
MP2-3507to 6010 W □ -B5
(M5×0.8 female thread)



MP2-4020to 8020 W □ -B5
(M5×0.8 female thread)

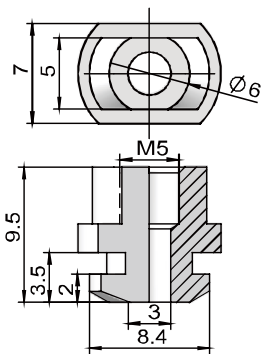


MP2-4030to 8030 W □ -B5
(M5×0.8 female thread)

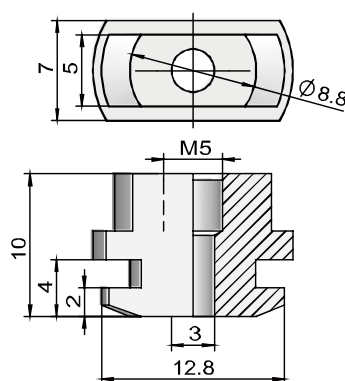


Design parameters of vacuum Joint

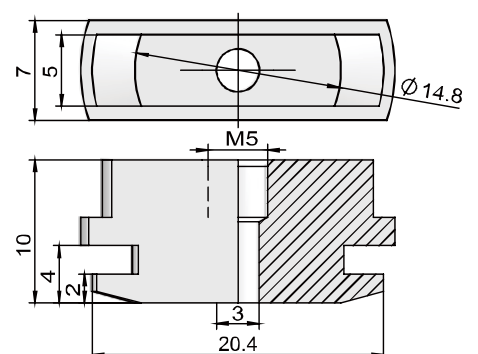
MP2A-001 Joint model
(Applicable MP2-3507 to 6010W)



MP2A-002 Joint model
(Applicable MP2-4020 to 8020W)



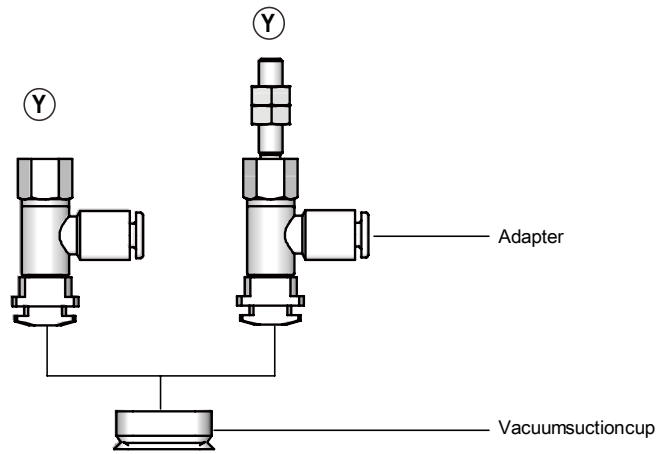
MP2A-003 Joint model
(Applicable MP2-4030 to 8030W)





Structure

- The product consists of a replaceable suction cup and a suction cup joint or an adapter
- The suction cup is equipped with a plug-in joint in the connecting position
- The vacuum port in vertical direction is installed through female thread
- The vacuum port in vertical direction is installed with a female threaded nut or a male threaded nut



purchase guide

MP2 - Y 3507 W N - 04 - A5

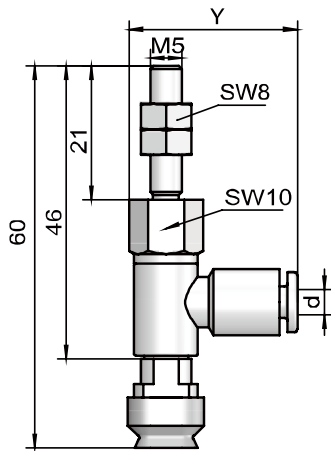
① ② ③ ④ ⑤ ⑥ ⑦

① Product series	② Vacuum port direction	③ Size specification	④ Shape specification
MP2	Y - Horizontal	3507 - 3.5× 7mm 6020 - 6× 20mm 4010 - 4× 10mm 8020 - 8× 20mm 5010 - 5× 10mm 4030 - 4× 30mm 6010 - 6× 10mm 5030 - 5× 30mm 4020 - 4× 20mm 6030 - 6× 30mm 5020 - 5× 20mm 8030 - 8× 30mm	W - Oval flat
⑤ Material of suction cup		⑥ Vacuum port	⑦ Adapter specification
N-nitrilerubber S- siliconerubber GN - static-proofnitrilerubber (Staticresistanceindex:10 ⁵ -10 ⁶) GS - static-proofsiliconerubber (Staticresistanceindex:10 ⁵ -10 ⁶) GHN- tracelessconductive nitrile rubber (Staticresistanceindex:10 ⁵ -10 ⁶)		04 - plug-in joint for φ4mm hose 06 - plug-in joint for φ6mm hose	A5 - M5×0.8 male thread B5 - M5×0.8 female thread



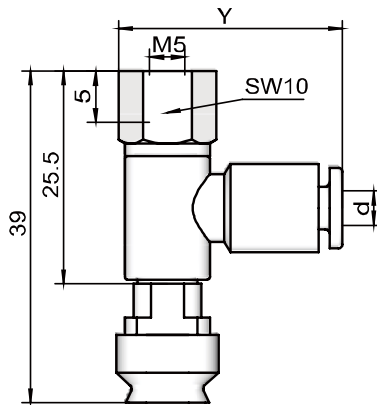
Design parameters

MP2-Y□ W...A5
Horizontally-mounted
fitted to M5×0.8 malethread



Model	(mm)			weight g	Applicable joint model
	Y	d			
MP2 Y□ W□ 04-A5	26.3	4		11.26	MPRS-04-A5
MP2 Y□ W□ 06-A5	27.3	6		12.30	MPRS-06-A5

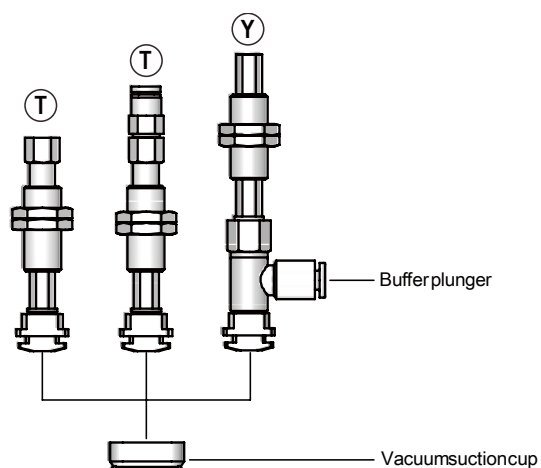
MP2-Y□ W...B5
Horizontally-mounted
fitted to M5×0.8 femalethread



Model	(mm)			weight g	Applicable joint model
	Y	d			
MP2 Y□ W□ 04-B5	26.3	4		7.30	MPRS-04-B5
MP2 Y□ W□ 06-B5	27.3	6		8.38	MPRS-06-B5

Structure

- The product consists of a replaceable suction cup and a buffer plunger
- The suction cup is equipped with a plug-in joint in the connecting position
- The vacuum port in vertical direction is installed with a male threaded nut
- The vacuum port in horizontal direction is installed with a male threaded nut



Guide to purchase

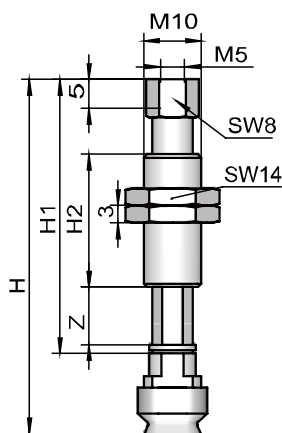
MP2 - T 3507 W N - K 10 - B5

① ② ③ ④ ⑤ ⑥ ⑦ ⑧

① Product series	② Vacuum port direction	③ Size specification		④ Shape specification
MP2	T - Vertical	3507 - 3.5× 7mm	6020 - 6× 20mm	W - Oblongflat
	Y - Horizontal	4010 - 4× 10mm	8020 - 8× 20mm	
		5010 - 5× 10mm	4030 - 4× 30mm	
		6010 - 6× 10mm	5030 - 5× 30mm	
		4020 - 4× 20mm	6030 - 6× 30mm	
		5020 - 5× 20mm	8030 - 8× 30mm	
<p>Note: When Y is selected, the B5 option of the Adapter specification item will be disabled</p>				
⑤ Material of suction cup		⑥ Slewing mode	⑦ Buffering stroke	⑧ Adapter specification
N- nitrile rubber		K - Non-slewing	10 - 10mm	B5 - M5×0.8 female thread
S- silicon rubber			20 - 20mm	04 - Plug-in joint for φ4mm hose
F - fluorine rubber			30 - 30mm	06 - Plug-in joint for φ6mm hose
GN - static-proof nitrile rubber (Static resistance index: 10 ⁵ -10 ⁹)			40 - 40mm	
GS - static-proof silicon rubber (Static resistance index: 10 ⁵ -10 ⁹)			50 - 50mm	
GHN - traceless conductive nitrile rubber (Static resistance index: 10 ⁵ -10 ⁹)				

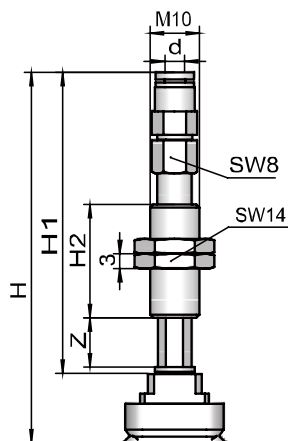
Design parameters

MP2 T□ W...-B5
Vertical and non-slewing



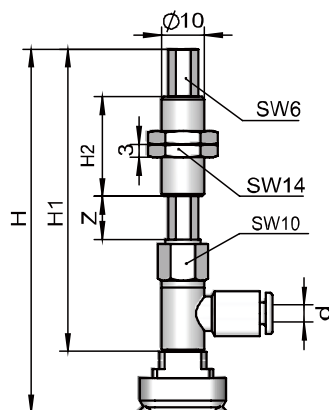
Model	Size(mm)					Travel	weight g	Applicable buffer plunger model
	H	H1	H2	Z				
MP2 T□ W□ K10-B5	61.5	47.5	23	11.5	10	11.4	MPB2K10-B5	
MP2 T□ W□ K20-B5	99.5	85.5	51	21.5	20	17.4	MPB2K20-B5	
MP2 T□ W□ K30-B5	109.5	95.5	51	31.5	30	18.1	MPB2K30-B5	
MP2 T□ W□ K40-B5	145.5	131.5	77	41.5	40	23.7	MPB2K40-B5	
MP2 T□ W□ K50-B5	155.5	141.5	77	51.5	50	24.4	MPB2K50-B5	

MP2 T□ W...-04(06)
Vertical and non-slewing



Model	Size(mm)					Travel	weight g	Applicable buffer plunger model
	H	H1	H2	Z	d			
MP2 T□ W□ K10-04	75.4	61.4	23	11.5	4	10	12.8	MPB2K10-04
MP2 T□ W□ K20-04	85.4	99.4	51	21.5	4	20	18.8	MPB2K20-04
MP2 T□ W□ K30-04	95.4	109.4	51	31.5	4	30	19.5	MPB2K30-04
MP2 T□ W□ K40-04	105.4	145.4	77	41.5	4	40	25.2	MPB2K40-04
MP2 T□ W□ K50-04	115.4	155.4	77	51.5	4	50	25.8	MPB2K50-04
MP2 T□ W□ K10-06	75.4	62.2	23	11.5	6	10	13.3	MPB2K10-06
MP2 T□ W□ K20-06	85.4	100.2	51	21.5	6	20	19.4	MPB2K20-06
MP2 T□ W□ K30-06	95.4	110.2	51	31.5	6	30	20.1	MPB2K30-06
MP2 T□ W□ K40-06	105.4	146.2	77	41.5	6	40	25.7	MPB2K40-06
MP2 T□ W□ K50-06	115.4	156.2	77	51.5	6	50	26.4	MPB2K50-06

MP2 Y□ W...-04(06)
Horizontal and non-slewing



Model	Size(mm)					Travel	weight g	Applicable buffer plunger model
	H	H1	H2	Z	d			
MP2 Y□ W□ K10-04	84	70	23	11.5	4	10	18.9	MPB2K-10
MP2 Y□ W□ K20-04	122	124.4	51	21.5	4	20	25.7	MPB2K-20
MP2 Y□ W□ K30-04	132	134.4	51	31.5	4	30	26.5	MPB2K-30
MP2 Y□ W□ K40-04	168	170.4	77	41.5	4	40	32.8	MPB2K-40
MP2 Y□ W□ K50-04	178	180.4	77	51.5	4	50	33.7	MPB2K-50
MP2 Y□ W□ K10-06	84	87.2	23	11.5	6	10	20.0	MPB2K-10
MP2 Y□ W□ K20-06	122	125.2	51	21.5	6	20	26.7	MPB2K-20
MP2 Y□ W□ K30-06	132	135.2	51	31.5	6	30	27.6	MPB2K-30
MP2 Y□ W□ K40-06	168	171.2	77	41.5	6	40	33.9	MPB2K-40
MP2 Y□ W□ K50-06	178	181.2	77	51.5	6	50	34.7	MPB2K-50