



MP3E Heavy-duty Vacuum suction cup

Size: 32–125mm

Material: N, S



General-purpose



Heavy-duty



UM- Grooved flat



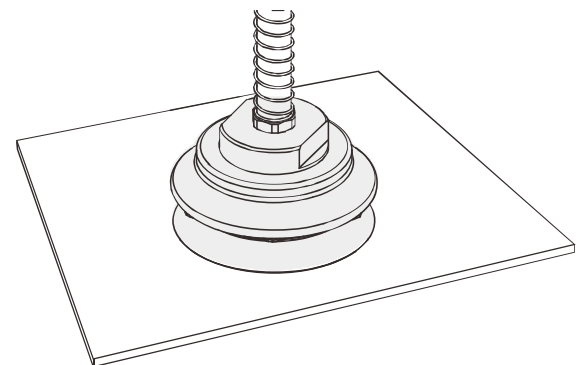
BM - Grooved bellows-type

Introduction

- The concave and convex suction surface design increases the
- workpiece contact area as well as the suction stability
- Applicable to handling heavy workpieces
- With a split structure design, fittings can be easily replaced, low use cost

Application

- Handle of large workpieces with even or slightly rough surfaces, such as wood boards, steel plates, heavy workpieces, etc.

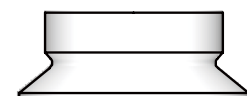


Structure

- With a split structure design, vulnerable elements can be easily replaced



Plate



Suction cup



purchase guide

MP3E - 32 UM N - P

- ①
- ②
- ③
- ④
- ⑤

① Product series	② Size specification	③ Shape specification	④ Material of suction cup	⑤ Plate
MP3E	32 - φ32mm 40 - φ40mm 50 - φ50mm 63 - φ63mm 80 - φ80mm 100 - φ100mm 125 - φ125mm	UM- Grooved flat BM- Grooved bellows-type	N - nitrilerubber S - siliconerubber	Null - No plate (bare suction cup) P - Plate-equipped

Theoretical Suction Force Chart

Theoretical Suction Force Chart (Theoretical Suction Force = P x S x 0.1)

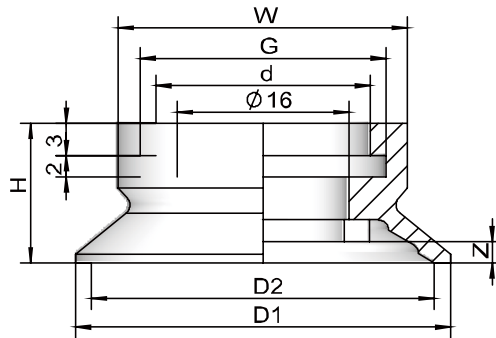
Units: N

Suction Cup Size (mm)		φ32	φ40	φ50	φ63	φ80	φ100	φ125
S: Suction Cup Area (cm ²)		8.04	12.56	19.63	31.16	50.24	78.50	122.66
Vacuum Pressure (kPa)	-85	68.3	107	167	265	427	667	1043
	-80	64.3	100	157	249	402	628	981
	-75	60.3	94.2	147	234	377	589	920
	-70	56.3	87.9	137	218	352	550	859
	-65	52.2	81.6	128	203	327	510	797
	-60	48.2	75.4	118	187	301	471	736
	-55	44.2	69.1	108	171	276	432	675
	-50	40.2	62.8	98.1	156	251	393	613
	-45	36.2	56.5	88.3	140	226	353	552
-40	32.2	50.2	78.5	125	201	314	491	

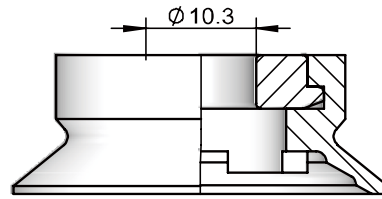


Design parameters

MP3E-32 to 50 UM □

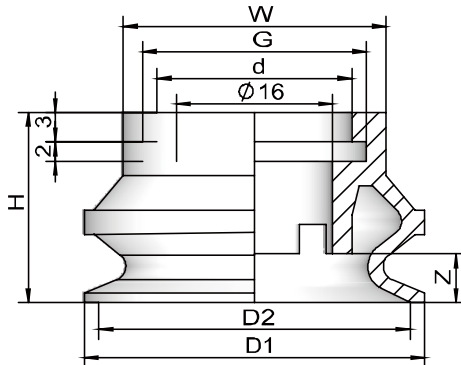


MP3E-32 to 50 UM □ -P

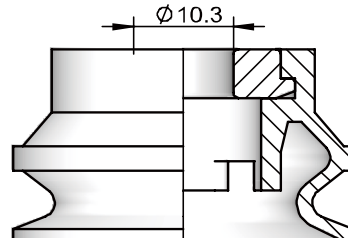


Model	Size(mm)						
	D1	D2	d	H	W	G	Z
MP3E-32UM □	35	32	20	13	27	23	2
MP3E-32UM □ -P	35	32	20	13	27	23	2
MP3E-40UM □	43	40	20	13	27	23	2.5
MP3E-40UM □ -P	43	40	20	13	27	23	2.5
MP3E-50UM □	53	50	27	13.5	36	31	3
MP3E-50UM □ -P	53	50	27	13.5	36	31	3

MP3E-32 to 50 BM □



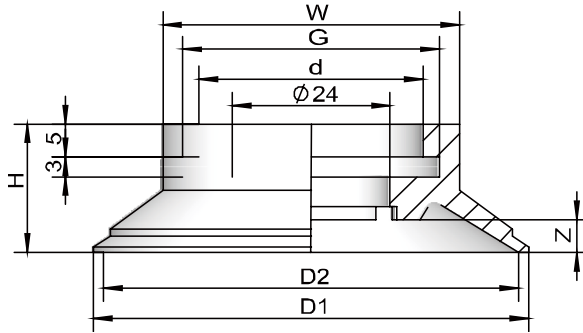
MP3E-32 to 50 BM □ -P



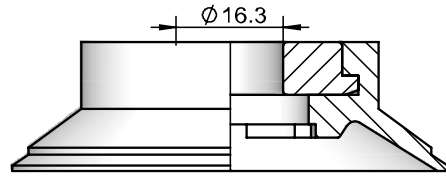
Model	Size(mm)						
	D1	D2	d	H	W	G	Z
MP3E-32BM □	35	32	20	19.5	27	23	5
MP3E-32BM □ -P	35	32	20	19.5	27	23	5
MP3E-40BM □	44	40	20	21.5	27	23	7
MP3E-40BM □ -P	44	40	20	21.5	27	23	7
MP3E-50BM □	54	50	27	25	36	31	10
MP3E-50BM □ -P	54	50	27	25	36	31	10



MP3E-63 to 125 UM □

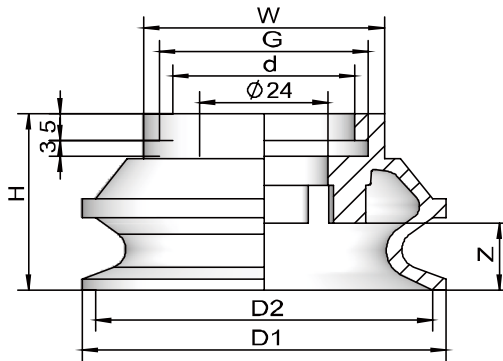


MP3E-63 to 125 UM □ -P

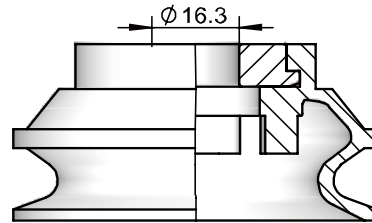


Model	Size(mm)							
	D1	D2	d	H	W	G	Z	
MP3E-63UM □	66	63	34	19.5	45	39	5	
MP3E-63UM □ -P	66	63	34	19.5	45	39	5	
MP3E-80UM □	83	80	34	19.5	45	39	5	
MP3E-80UM □ -P	83	80	34	19.5	45	39	5	
MP3E-100UM □	103	100	43	22	56	49.5	7	
MP3E-100UM □ -P	103	100	43	22	56	49.5	7	
MP3E-125UM □	128	125	58	22	73	65	7	
MP3E-125UM □ -P	128	125	58	22	73	65	7	

MP3E-63 to 125 BM □



MP3E-63 to 125 BM □ -P

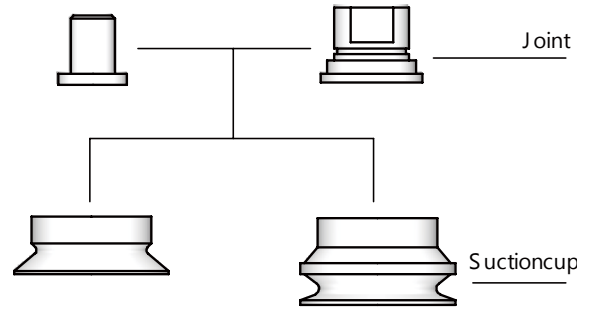


Model	Size(mm)							
	D1	D2	d	H	W	G	Z	
MP3E-63BM □	68	63	34	33	45	39	12.5	
MP3E-63BM □ -P	68	63	34	33	45	39	12.5	
MP3E-80BM □	85	80	43	41	56	49.5	18	
MP3E-80BM □ -P	85	80	43	41	56	49.5	18	
MP3E-100BM □	106	100	58	50.5	73	65	22	
MP3E-100BM □ -P	106	100	58	50.5	73	65	22	
MP3E-125BM □	133	125	71	60	88	80	25	
MP3E-125BM □ -P	133	125	71	60	88	80	25	



Structure

- With a split structure design, vulnerable elements can be easily replaced



purchase guide

MP3E - T 32 UM N - A10

① ② ③ ④ ⑤ ⑥

① Product series	② Vacuum port direction	③ Size specification	④ Shape specification	⑤ Material of suction cup	⑥ Joint specification
MP3E	T - Vertical	32 - ϕ 32mm	UM- Grooved flat	N - nitrile rubber	A10 - fitted to M10 \times 1 male thread
	Y - Horizontal	40 - ϕ 40mm	BM- Grooved bellows -type	S - siliconerubber	AG1 - Fitted to G1/8 male thread
		50 - ϕ 50mm			A16 - fitted to M16 \times 1.5 male thread
		63 - ϕ 63mm			B8 - fitted to M8 \times 1.25 female thread
		80 - ϕ 80mm			B10 - fitted to M10 \times 1.5 female thread
		100 - ϕ 100mm			B12 - fitted to M12 \times 1.75 female thread
		125 - ϕ 125mm			B18 - fitted to M18 \times 1.5 female thread

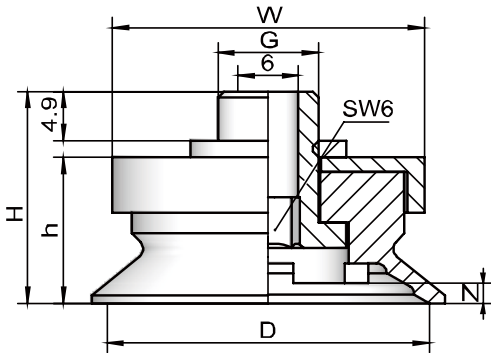
Model specifications

Model specification	Shape specification		Connection specification						
	UM	BM	A10 fitted to M10 \times 1 male thread	AG1 Fitted to G 1/8 male thread	A16 fitted to M16 \times 1.5 male thread	B8 fitted to M8 \times 1.25 female thread	B10 fitted to M10 \times 1.5 female thread	B12 fitted to M12 \times 1.75 female thread	B18 fitted to M18 \times 1.5 female thread
ϕ 32	●	●	●	●	-	●	●	-	-
ϕ 40	●	●	●	●	-	●	●	-	-
ϕ 50	●	●	●	●	-	●	●	-	-
ϕ 63	●	●	-	-	●	-	-	●	●
ϕ 80	●	●	-	-	●	-	-	●	●
ϕ 100	●	●	-	-	●	-	-	●	●
ϕ 125	●	●	-	-	●	-	-	●	●



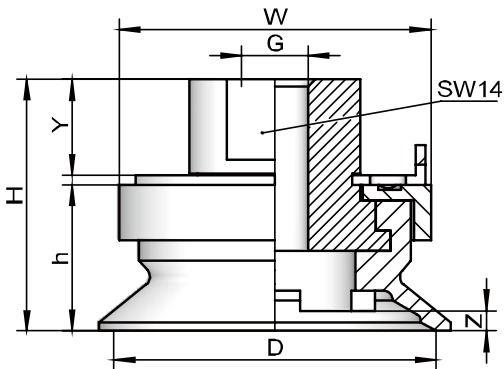
Design parameters

MP3E-T 32 to 50 UM ...



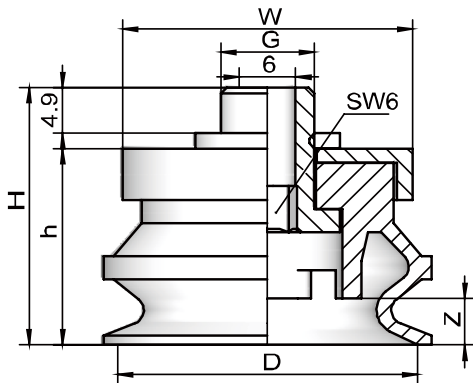
Model	Size (mm)					
	D	H	h	W	Z	G
MP3E-T32UM □ -A10	32	21	14.5	31	2	M10×1
MP3E-T32UM □ -AG1	32	21	14.5	31	2	G 1/8
MP3E-T40UM □ -A10	40	21	14.5	31	2.5	M10×1
MP3E-T40UM □ -AG1	40	21	14.5	31	2.5	G 1/8
MP3E-T50UM □ -A10	50	21.5	15	40	3	M10×1
MP3E-T50UM □ -AG1	50	21.5	15	40	3	G 1/8

MP3E-T 32 to 50 UM ...



Model	Size (mm)						
	D	H	h	Y	W	Z	G
MP3E-T32UM □ -B8	32	25	14.5	9.5	31	2	M8×1.25
MP3E-T32UM □ -B10	32	25	14.5	13	31	2	M10×1.5
MP3E-T40UM □ -B8	40	25	14.5	9.5	31	2.5	M8×1.25
MP3E-T40UM □ -B10	40	25	14.5	13	31	2.5	M10×1.5
MP3E-T50UM □ -B8	50	25.5	15	9.5	40	3	M8×1.25
MP3E-T50UM □ -B10	50	15.5	15	13	40	3	M10×1.5

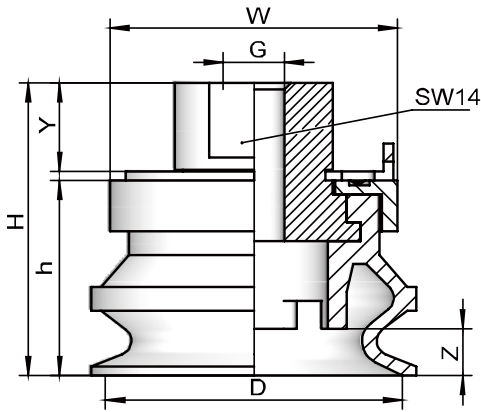
MP3E-T 32 to 50 BM ...



Model	Size (mm)					
	D	H	h	W	Z	G
MP3E-T32BM □ -A10	32	27.5	21	31	5	M10×1
MP3E-T32BM □ -AG1	32	27.5	21	31	5	G 1/8
MP3E-T40BM □ -A10	40	29.5	23	31	7	M10×1
MP3E-T40BM □ -AG1	40	29.5	23	31	7	G 1/8
MP3E-T50BM □ -A10	50	33	26.5	40	10	M10×1
MP3E-T50BM □ -AG1	50	33	26.5	40	10	G 1/8

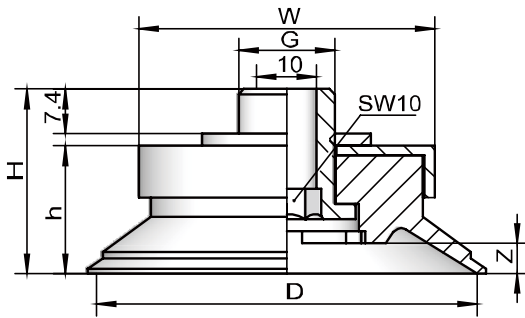


MP3E-T 32 to 50 BM ...



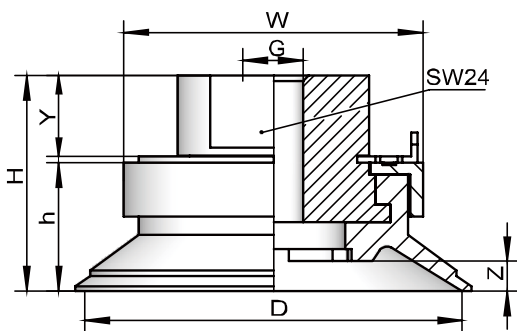
Model	Size (mm)						
	D	H	h	Y	W	Z	G
MP3E-T32BM □ -B8	32	31.5	21	9.5	31	5	M8×1.25
MP3E-T32BM □ -B10	32	31.5	21	13	31	5	M10×1.5
MP3E-T40BM □ -B8	40	33.5	23	9.5	31	7	M8×1.25
MP3E-T40BM □ -B10	40	33.5	23	13	31	7	M10×1.5
MP3E-T50BM □ -B8	50	37	26.5	9.5	40	10	M8×1.25
MP3E-T50BM □ -B10	50	37	26.5	13	40	10	M10×1.5

MP3E-T 63 to 125 UM □ -A16



Model	Size (mm)						
	D	H	h	W	Z	G	
MP3E-T63UM □ -A16	63	30.5	21	49	5	M16×1.5	
MP3E-T80UM □ -A16	80	30.5	21	49	5	M16×1.5	
MP3E-T100UM □ -A16	100	33	23.6	60	7	M16×1.5	
MP3E-T125UM □ -A16	125	33	23.6	77.8	7	M16×1.5	

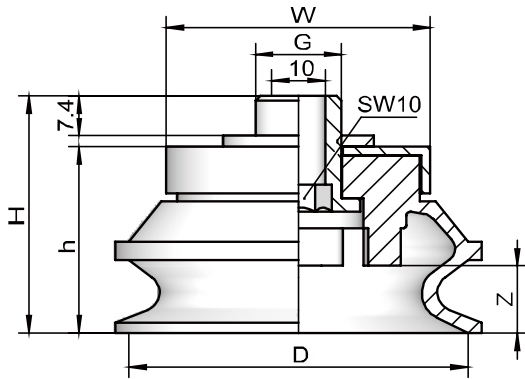
MP3E-T 63 to 125 UM ...



Model	Size (mm)						
	D	H	h	Y	W	Z	G
MP3E-T63UM □ -B12	63	36	21.5	12	50	5	M12×1.75
MP3E-T63UM □ -B18	63	36	21.5	12	50	5	M18×1.5
MP3E-T80UM □ -B12	80	36	21.5	12	50	5	M12×1.75
MP3E-T80UM □ -B18	80	36	21.5	12	50	5	M18×1.5
MP3E-T100UM □ -B12	100	38.5	24	18	61	7	M12×1.75
MP3E-T100UM □ -B18	100	38.5	24	18	61	7	M18×1.5
MP3E-T125UM □ -B12	125	38.5	24	18	78.6	7	M12×1.75
MP3E-T125UM □ -B18	125	38.5	24	18	78.6	7	M18×1.5

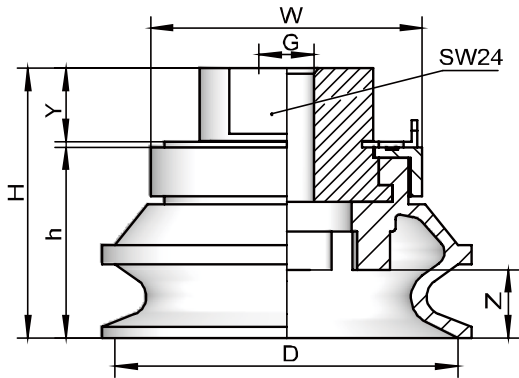


MP3E-T 63 to 125 BM □ -A16



Model	Size (mm)					
	D	H	h	W	Z	G
MP3E-T63BM□ -A16	63	44	34.6	49	12.5	M16×1.5
MP3E-T80BM□ -A16	80	52	42.6	60	18	M16×1.5
MP3E-T100BM□ -A16	100	61.5	52	77.8	22	M16×1.5
MP3E-T125BM□ -A16	125	71	61.6	93	25	M16×1.5

MP3E-T 63 to 125 BM ...

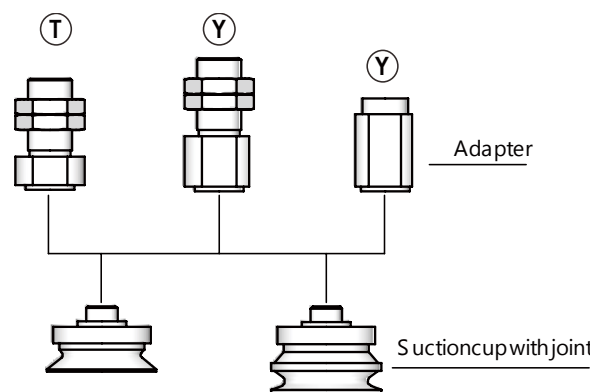


Model	Size (mm)						
	D	H	h	Y	W	Z	G
MP3E-T63BM□ -B12	63	49.5	35	12	50	12.5	M12×1.75
MP3E-T63BM□ -B18	63	49.5	35	18	50	12.5	M18×1.5
MP3E-T80BM□ -B12	80	57.5	43	12	61	18	M12×1.75
MP3E-T80BM□ -B18	80	57.5	43	18	61	18	M18×1.5
MP3E-T100BM□ -B12	100	67	52.5	12	78.6	22	M12×1.75
MP3E-T100BM□ -B18	100	67	52.5	18	78.6	22	M18×1.5
MP3E-T125BM□ -B12	125	76.5	62	12	93.8	25	M12×1.75
MP3E-T125BM□ -B18	125	76.5	62	18	93.8	25	M18×1.5



Structure

- The product consists of a suction cup and an adapter
- The vacuum port in vertical direction is installed with a male threaded nut
- The vacuum port in horizontal direction is installed with a female threaded nut or a male threaded nut



Guide to purchase

MP3E - T 32 UM N - AL14

① ② ③ ④ ⑤ ⑥

① Product series	② Vacuum port direction	③ Size specification	④ Shape specification	⑤ Material of suction cup	⑥ Adapter specification
MP3E	T - Vertical	32 - φ32mm	UM- Grooved flat	N - nitrile rubber	AL14 - M14 ×1 male thread
	Y - Horizontal	40 - φ40mm	BM- Grooved bellows -type	S - siliconerubber	AL16 - M16 ×1.5 male thread
		50 - φ50mm			B8 - M8 ×1.25 female thread
		63 - φ63mm			B12 - M12 ×1.75 female thread
		80 - φ80mm			
		100 - φ100mm			
125 - φ125mm					

Model specifications

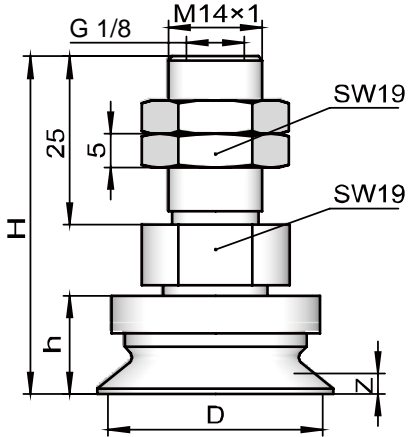
Model specification	Shape specification		T- Vertical		Y- Horizontal		B8 M8×1.25femalethread	B12 M12×1.75femalethread
	UM	BM	AL14	AL16	AL14	AL16		
			M14×1 male thread	M16×1.5 male thread	M14×1 male thread	M16×1.5 male thread		
φ32	●	●	●	-	●	-	●	-
φ40	●	●	●	-	●	-	●	-
φ50	●	●	●	-	●	-	●	-
φ63	●	●	-	●	-	●	-	●
φ80	●	●	-	●	-	●	-	●
φ100	●	●	-	●	-	●	-	●
φ125	●	●	-	●	-	●	-	●



System design

■ Type-UM suction cup (φ32-φ 50mm) -Vacuum port in vertical direction

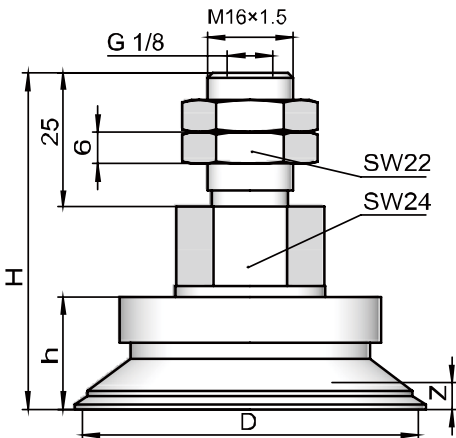
MP3E-T 32 to 50 UM□ -AL14
(M14×1 male thread)



Model	Size (mm)			
	D	H	h	Z
MP3E-T32UM□ -AL14	35	50	14.5	2
MP3E-T40UM□ -AL14	43	50	14.5	2.5
MP3E-T50UM□ -AL14	53	50.6	15	3

■ Type-UM suction cup (φ63-φ 125mm) —Vacuum port in vertical direction

MP3E-T 63 to 125 UM□ -AL16
(M16×1.5 male thread)

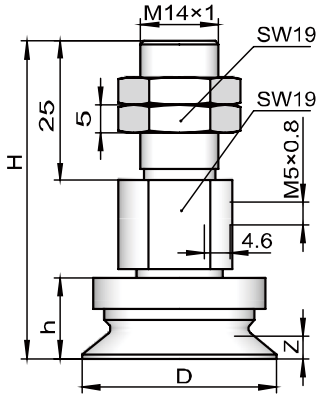


Model	Size (mm)			
	D	H	h	Z
MP3E-T63UM□ -AL16	66	63	21	5
MP3E-T80UM□ -AL16	83	63	21	5
MP3E-T100UM□ -AL16	103	65.5	23.6	7
MP3E-T125UM□ -AL16	128	65.5	23.6	7



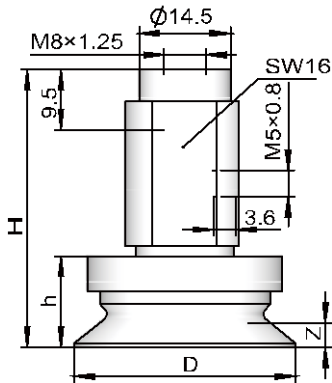
■ Type-UM suction cup (φ32–φ 50mm) —Vacuum port in horizontal direction

MP3E-Y 32 to 50 UM□ -AL14
(M14×1 male thread)



Model	Size (mm)			
	D	H	h	Z
MP3E-Y32UM□ -AL14	35	57	14.5	2
MP3E-Y40UM□ -AL14	43	57	14.5	2.5
MP3E-Y50UM□ -AL14	53	57.6	15	3

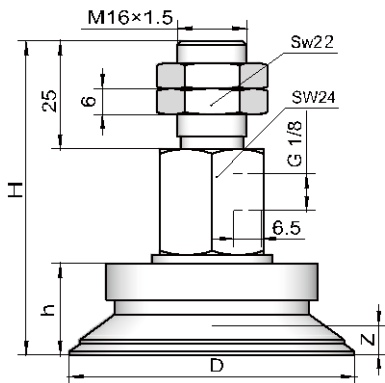
MP3E-Y 32 to 50 UM□ -B8
(M8×1.25 female thread)



Model	Size (mm)			
	D	H	h	Z
MP3E-Y32UM□ -B8	35	44	14.5	2
MP3E-Y40UM□ -B8	43	44	14.5	2.5
MP3E-Y50UM□ -B8	53	44.6	15	3

■ Type-UM suction cup (φ63–φ 125mm) —Vacuum port in horizontal direction

MP3E-Y 63 to 125 UM□ -AL16
(M16×1.5 male thread)

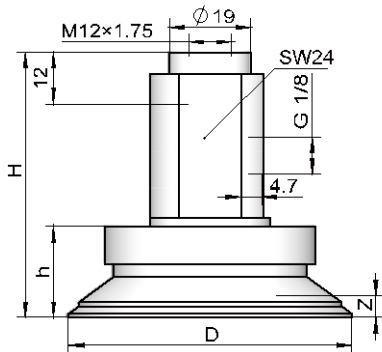


Model	Size (mm)			
	D	H	h	Z
MP3E-Y63UM□ -AL16	66	72.6	21	5
MP3E-Y80UM□ -AL16	83	72.6	21	5
MP3E-Y100UM□ -AL16	103	75	23.6	7
MP3E-Y125UM□ -AL16	128	75	23.6	7



■ Type-UM suction cup (φ63–φ 125mm) —Vacuum port in horizontal direction

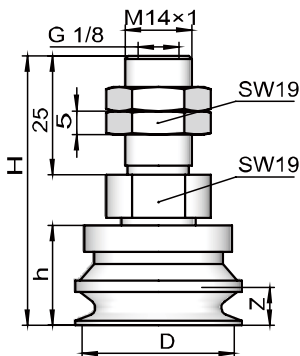
MP3E-Y 63 to 125 UM□ B12
(M12×1.75 female thread)



Model	Size (mm)			
	D	H	h	Z
MP3E-Y63UM□ -B12	66	61.6	21	5
MP3E-Y80UM□ -B12	83	61.6	21	5
MP3E-Y100UM□ -B12	103	64	23.6	7
MP3E-Y125UM□ -B12	128	64	23.6	7

■ Type-BM suction cup (φ32–φ 50mm) —Vacuum port in vertical direction

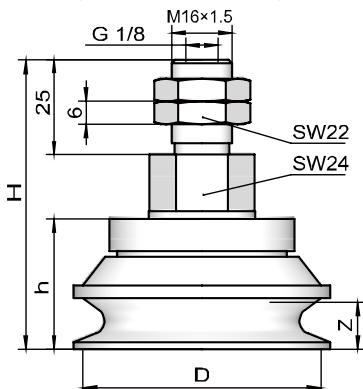
MP3E-T 32 to 50 BM□ AL14
(M14×1 male thread)



Model	Size (mm)			
	D	H	h	Z
MP3E-T32BM□ -AL14	35	56.6	21	5
MP3E-T40BM□ -AL14	44	58.6	23	7
MP3E-T50BM□ -AL14	54	62.1	26.5	10

■ Type-BM suction cup (φ63–φ 125mm) —Vacuum port in vertical direction

MP3E-T 63 to 125 BM□ AL16
(M16×1.5 male thread)

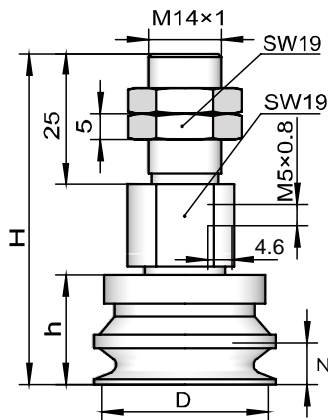


Model	Size (mm)			
	D	H	h	Z
MP3E-T63BM□ -AL16	68	76.6	34.6	12.5
MP3E-T80BM□ -AL16	85	84.6	42.6	18
MP3E-T100BM□ -AL16	106	94	52	22
MP3E-T125BM□ -AL16	133	103.6	61.6	25



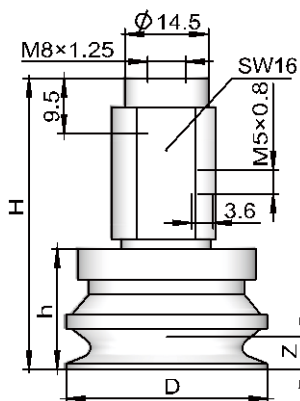
■ Type-BM suction cup (φ32–φ 50mm) —Vacuum port in horizontal direction

MP3E-Y 32 to 50 BM□ AL14
(M14×1 male thread)



Model	Size (mm)			
	D	H	h	Z
MP3E-Y32BM□ -AL14	35	63.6	21	5
MP3E-Y40BM□ -AL14	44	65.6	23	7
MP3E-Y50BM□ -AL14	54	69	26.5	10

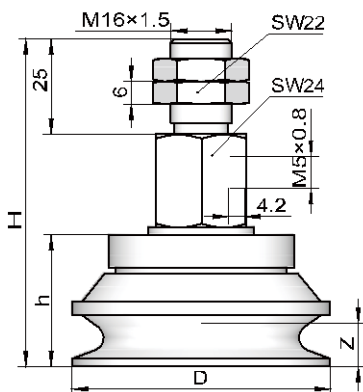
MP3E-Y 32 to 50 BM□ B8
(M8×1.25 female thread)



Model	Size (mm)			
	D	H	h	Z
MP3E-Y32BM□ -B8	35	50.6	21	5
MP3E-Y40BM□ -B8	44	52.6	23	7
MP3E-Y50BM□ -B8	54	56	26.5	10

■ Type-BM suction cup (φ63–φ 125mm) —Vacuum port in horizontal direction

MP3E-Y 63 to 125 BM□ AL16
(M16×1.5 male thread)

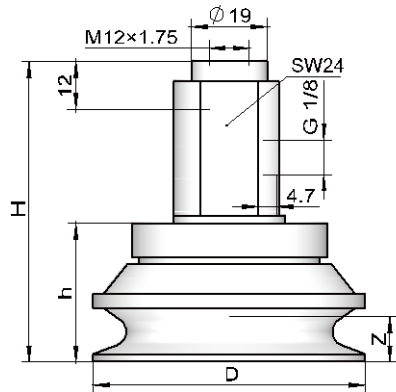


Model	Size (mm)			
	D	H	h	Z
MP3E-Y63BM□ -AL16	68	86	34.6	12.5
MP3E-Y80BM□ -AL16	85	94	42.6	18
MP3E-Y100BM□ -AL16	106	103.6	52	22
MP3E-Y125BM□ -AL16	133	113	61.6	25



- Type-BM suction cup (φ63–φ 125mm) —Vacuum port in horizontal direction

MP3E-Y 63 to 125 BM□ B12
(M12×1.75 female thread)

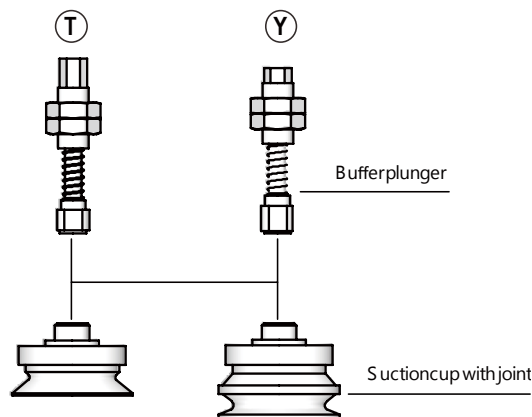


Model	Size (mm)			
	D	H	h	Z
MP3E-Y63BM□ -B12	68	75	34.6	12.5
MP3E-Y80BM□ -B12	85	83	42.6	18
MP3E-Y100BM□ -B12	106	92.6	52	22
MP3E-Y125BM□ -B12	133	102	61.6	25



Structure

- The product consists of a suction cup and a buffer plunger
- The vacuum port in vertical direction is installed with a male threaded nut
- The vacuum port in horizontal direction is installed with a male threaded nu



Guide to purchase

MP3E - T 32 UM N - JB 10

① ② ③ ④ ⑤ ⑥ ⑦

① Product series	② Vacuum port direction	③ Size specification	④ Shape specification
MP3E	T - Vertical Y - Horizontal	32 - φ32mm 40 - φ40mm 50 - φ50mm 63 - φ63mm 80 - φ80mm 100 - φ100mm 125 - φ125mm	UM-Groovedflat BM-Groovedbellows-type
⑤ Material of suction cup		⑥ Slewing mode	⑦ Buffering stroke
N - nitrile rubber S - siliconerubber		JB - Slewing,bushing-equipped	10 - 10mm 30 - 30mm 50 - 50mm

Model specifications

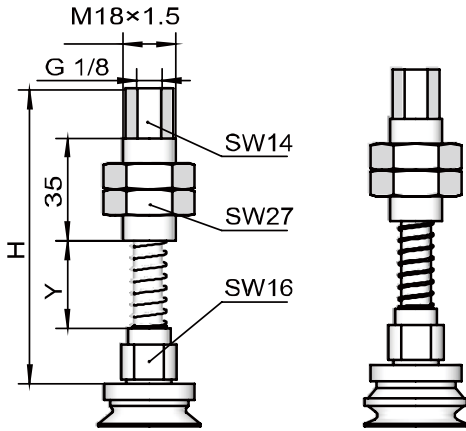
Model specification	Shape specification		Vacuum port direction		Buffering travel		
	UM	BM	T- Vertical	Y- Horizontal	10	30	50
φ32	●	●	●	●	●	●	●
φ40	●	●	●	●	●	●	●
φ50	●	●	●	●	●	●	●
φ63	●	●	●	●	●	●	●
φ80	●	●	●	●	●	●	●
φ100	●	●	●	●	●	●	●
φ125	●	●	●	●	●	●	●



Design parameters

MP3E-T 32 to 50 □ UM(BM)...

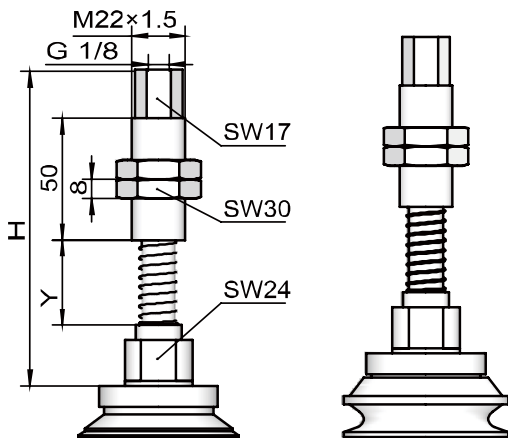
Vertically-slewing, bushing-equipped



Model	Size (mm)		Applicable suction cup
	H	Y	
MP3E-T □ UM(BM) □ -JB10	101.1	10	32.40.50
MP3E-T □ UM(BM) □ -JB30	126.1	30	32.40.50
MP3E-T □ UM(BM) □ -JB50	146.1	50	32.40.50

MP3E-T 63 to 125 □ UM(BM)...

Vertically-slewing, bushing-equipped

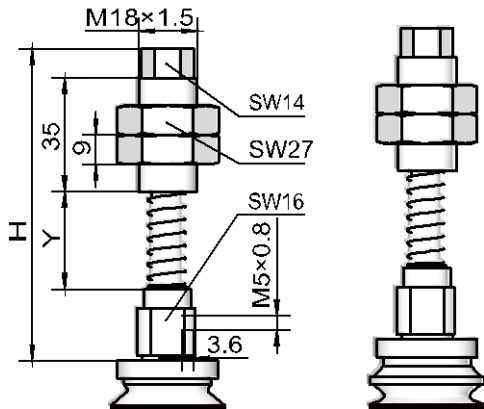


Model	Size (mm)		Applicable suction cup
	H	Y	
MP3E-T □ UM(BM) □ -JB10	130	10	63.80.100.125
MP3E-T □ UM(BM) □ -JB30	155	30	63.80.100.125
MP3E-T □ UM(BM) □ -JB50	175	50	63.80.100.125



MP3E-Y 32 to 50 □ UM(BM)...

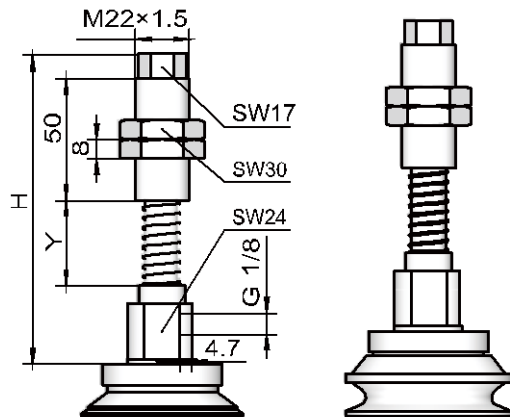
Horizontally-slewing, bushing-equipped



Model	Size (mm)		Applicable suction cup
	H	Y	
MP3E-Y □ UM(BM)□ -JB10	96.1	10	32.40.50
MP3E-Y □ UM(BM)□ -JB30	121.1	30	32.40.50
MP3E-Y □ UM(BM)□ -JB50	141.1	50	32.40.50

MP3E-Y 63 to 125 □ UM(BM)...

Horizontally-slewing, bushing-equipped

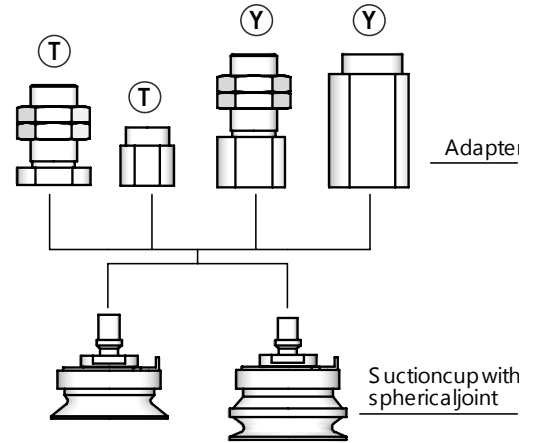


Model	Size (mm)		Applicable suction cup
	H	Y	
MP3E-Y □ UM(BM)□ -JB10	127	10	63.80.100.125
MP3E-Y □ UM(BM)□ -JB30	152	30	63.80.100.125
MP3E-Y □ UM(BM)□ -JB50	172	50	63.80.100.125



Structure

- The product consists of a suction cup and an adapter
- The vacuum port in vertical direction is installed with a female or male threaded nut
- The vacuum port in horizontal direction is installed with a female threaded nut or a male threaded nut



Purchase guide

MP3E - T F 32 UM N - AL14

① ② ③ ④ ⑤ ⑥ ⑦

① Product series	② Vacuum port direction	③ Joint type	④ Size specification
MP3E	T - Vertical Y - Horizontal	F - Swinging	32 - ϕ 32mm 80 - ϕ 80mm 40 - ϕ 40mm 100 - ϕ 100mm 50 - ϕ 50mm 125 - ϕ 125mm 63 - ϕ 63mm
⑤ Shapespecification	⑥ Material of suction cup	⑦ Adapter specification	
UM-Groovedflat BM-Groovedbellows-type	N - nitrile rubber S - siliconerubber	AL14 - M14 \times 1 male thread AL16 - M16 \times 1.5 male thread B8 - M8 \times 1.25 femalethread B12 - M12 \times 1.75 femalethread	

Model specifications

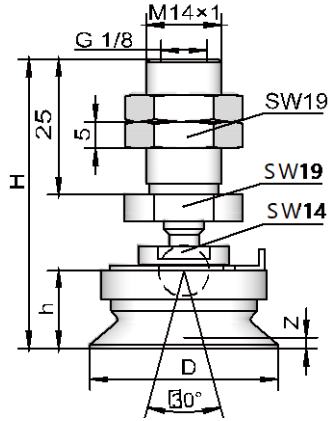
Model specification	Shape specification		Connection specification	T- Vertical				Y- Horizontal			
	UM	BM		AL14 M14 \times 1 male thread	AL16 M16 \times 1.5 male thread	B8 M8 \times 1.25 female thread	B12 M12 \times 1.75 female thread	AL14 M14 \times 1 male thread	AL16 M16 \times 1.5 male thread	B8 M8 \times 1.25 female thread	B12 M12 \times 1.75 female thread
ϕ 32	●	●		●	-	●	-	●	-	●	-
ϕ 40	●	●		●	-	●	-	●	-	●	-
ϕ 50	●	●		●	-	●	-	●	-	●	-
ϕ 63	●	●		-	●	-	●	-	●	-	●
ϕ 80	●	●		-	●	-	●	-	●	-	●
ϕ 100	●	●		-	●	-	●	-	●	-	●
ϕ 125	●	●		-	●	-	●	-	●	-	●



Design parameters

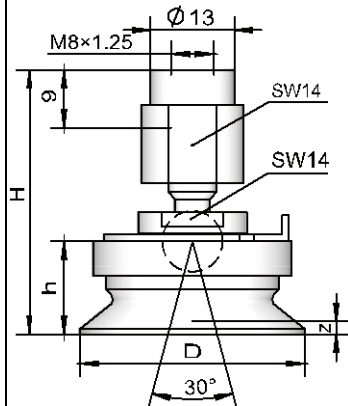
■ Type-UM suction cup (φ32-φ 50mm) —Vacuum port in vertical direction

MP3E-TF 32 to 50 UM□ -AL14
(M14×1 male thread)



Model	Size (mm)			
	D	H	h	z
MP3E-TF32UM □ -AL14	35	53.6	14.5	2
MP3E-TF40UM □ -AL14	43	53.6	14.5	2.5
MP3E-TF50UM □ -AL14	53	54	15	3

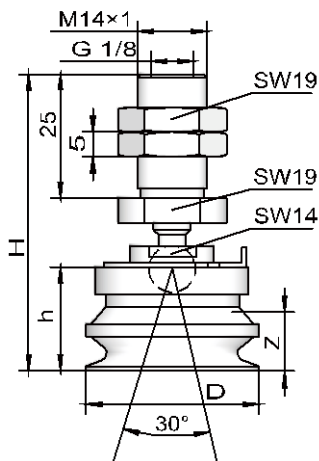
MP3E-TF 32 to 50 UM□ -B8
(M8×1.25 female thread)



Model	Size (mm)			
	D	H	h	z
MP3E-TF32UM □ -B8	35	41	14.5	2
MP3E-TF40UM □ -B8	43	41	14.5	2.5
MP3E-TF50UM □ -B8	53	41.6	15	3

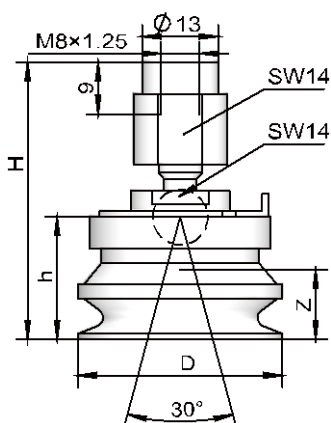
■ Type-BM suction cup (φ32–φ 50mm) —Vacuum port in vertical direction

MP3E-TF 32 to 50 BM □ -AL14
(M14×1 male thread)



Model	Size[mm]			
	D	H	h	z
MP3E-TF32BM □ -AL14	35	60	21	5
MP3E-TF40BM □ -AL14	44	62	23	7
MP3E-TF50BM □ -AL14	54	65.6	26.5	10

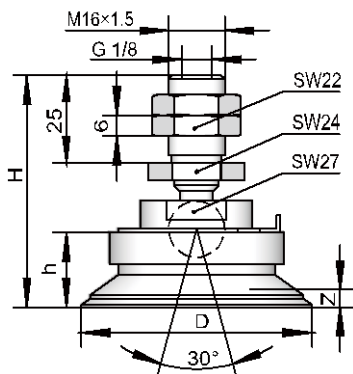
MP3E-TF 32 to 50 BM □ -B8
(M8×1.25 female thread)



Model	Size[mm]			
	D	H	h	z
MP3E-TF32BM □ -B8	35	47.6	21	5
MP3E-TF40BM □ -B8	44	49.6	23	7
MP3E-TF50BM □ -B8	54	53	26.5	10

■ Type-UM suction cup (φ63–φ 125mm) —Vacuum port in vertical direction

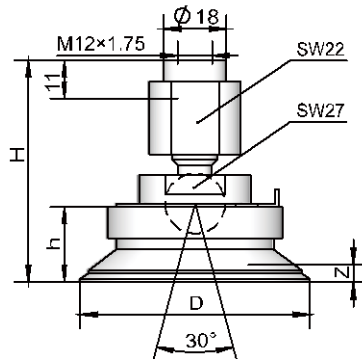
MP3E-TF 63 to 125 UM □ -AL16
(M16×1.5 male thread)



Model	Size[mm]			
	D	H	h	z
MP3E-TF63UM □ -AL16	66	66.5	21.5	5
MP3E-TF80UM □ -AL16	83	66.5	21.5	5
MP3E-TF100UM □ -AL16	103	69	24	7
MP3E-TF125UM □ -AL16	128	69	24	7

■ Type-UM suction cup (φ63–φ 125mm) —Vacuum port in vertical direction

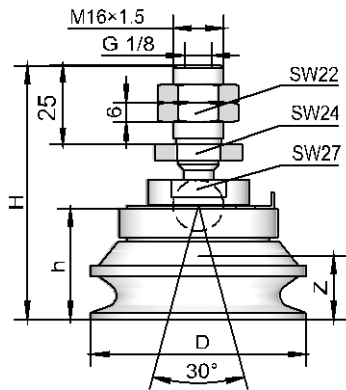
MP3E-TF 63 to 125 UM □-B12
(M12×1.75 female thread)



Model	Size[mm]			
	D	H	h	z
MP3E-TF63UM □-B12	66	63.5	21.5	5
MP3E-TF80UM □-B12	83	63.5	21.5	5
MP3E-TF100UM □-B12	103	66	24	7
MP3E-TF125UM □-B12	128	66	24	7

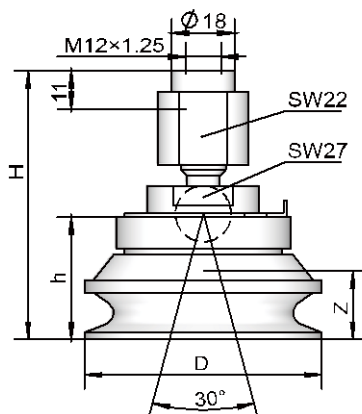
■ Type-BM suction cup (φ63–φ 125mm) —Vacuum port in vertical direction

MP3E-TF 63 to 125 BM □-AL16
(M16×1.5 male thread)



Model	Size[mm]			
	D	H	h	z
MP3E-TF63BM □-AL16	68	80	35	12.5
MP3E-TF80BM □-AL16	85	88	43	18
MP3E-TF100BM □-AL16	106	97.5	52.5	22
MP3E-TF125BM □-AL16	133	107	62	25

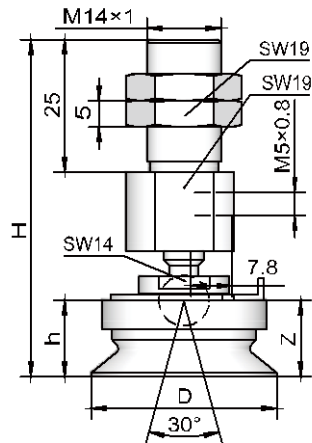
MP3E-TF 63 to 125 BM □-B12
(M12×1.75 female thread)



Model	Size[mm]			
	D	H	h	z
MP3E-TF63BM □-B12	68	77	35	12.5
MP3E-TF80BM □-B12	85	85	43	18
MP3E-TF100BM □-B12	106	94.5	52.5	22
MP3E-TF125BM □-B12	133	104	62	25

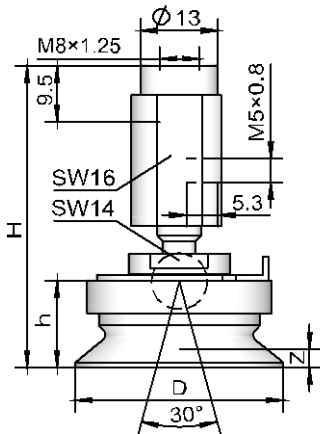
■ Type-UM suction cup (φ32–φ 50mm) —Vacuum port in horizontal direction

MP3E-YF 32 to 50 UM □ -AL14
(M14×1 male thread)



Model	Size [mm]			
	D	H	h	z
MP3E-YF32UM □ -AL14	35	63.6	14.5	2
MP3E-YF40UM □ -AL14	43	63.6	14.5	2.5
MP3E-YF50UM □ -AL14	53	64	15	3

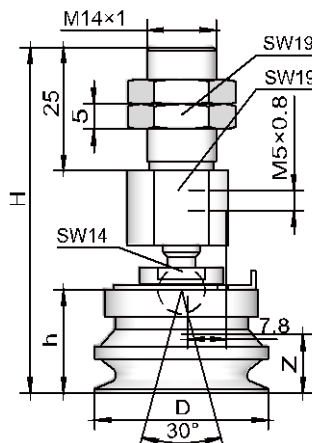
MP3E-YF 32 to 50 UM □ -B8
(M8×1.25 female thread)



Model	Size [mm]			
	D	H	h	z
MP3E-YF32UM □ -B8	35	50.6	14.5	2
MP3E-YF40UM □ -B8	43	50.6	14.5	2.5
MP3E-YF50UM □ -B8	53	51	15	3

■ Type-BM suction cup (φ32–φ 50mm) —Vacuum port in horizontal direction

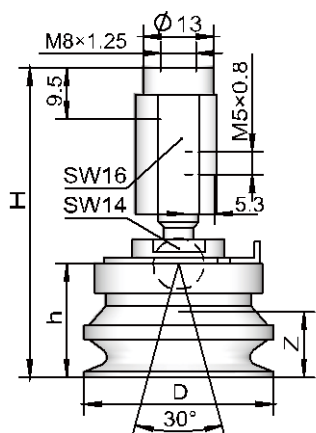
MP3E-YF 32 to 50 BM □ -AL14
(M14×1 male thread)



Model	Size [mm]			
	D	H	h	z
MP3E-YF32BM □ -AL14	35	70	21	5
MP3E-YF40BM □ -AL14	44	72	23	7
MP3E-YF50BM □ -AL14	54	75.6	26.5	10

■ Type-BM suction cup (φ32–φ 50mm) —Vacuum port in horizontal direct

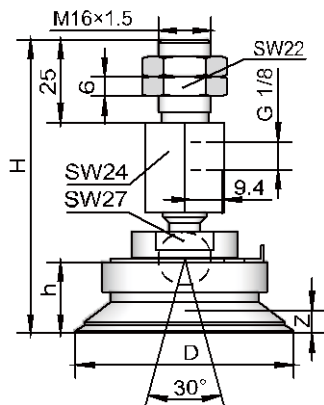
MP3E-YF 32 to 50 BM□-B8
(M8×1.25 female thread)



Model	Size [mm]			
	D	H	h	z
MP3E-YF32BM □-B8	35	57	21	5
MP3E-YF40BM □-B8	44	59	23	7
MP3E-YF50BM □-B8	54	62.6	26.5	10

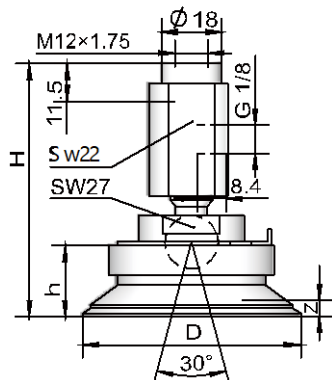
■ Type-UM suction cup (φ63–φ 125mm) —Vacuum port in horizontal direction

MP3E-YF 63 to 125 UM□-AL16
(M16×1.5 male thread)



Model	Size [mm]			
	D	H	h	z
MP3E-YF63UM □-AL16	66	88.5	21.5	5
MP3E-YF80UM □-AL16	83	88.5	21.5	5
MP3E-YF100UM □-AL16	103	91	24	7
MP3E-YF125UM □-AL16	128	91	24	7

MP3E-YF 63 to 125 UM□-B12
(M12×1.75 female thread)

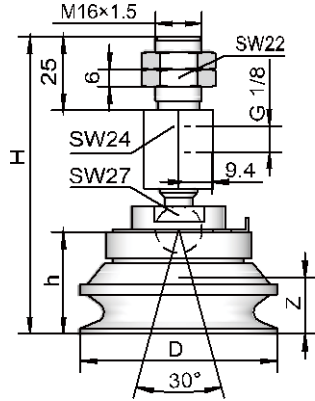


Model	Size [mm]			
	D	H	h	z
MP3E-YF63UM □-B12	66	76.5	21.5	5
MP3E-YF80UM □-B12	83	76.5	21.5	5
MP3E-YF100UM □-B12	103	79	24	7
MP3E-YF125UM □-B12	128	79	24	7



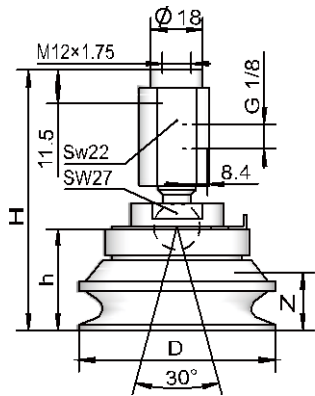
■ Type-BM suction cup (φ63–φ 125mm)—Vacuum port in horizontal direction

MP3E-YF 63 to 125 BM □-AL16
(M16×1.5 male thread)



Model	Size[mm]			
	D	H	h	z
MP3E-YF63BM □-AL16	68	102	35	12.5
MP3E-YF80BM □-AL16	85	110	43	18
MP3E-YF100BM □-AL16	106	119.5	52.5	22
MP3E-YF125BM □-AL16	133	129	62	25

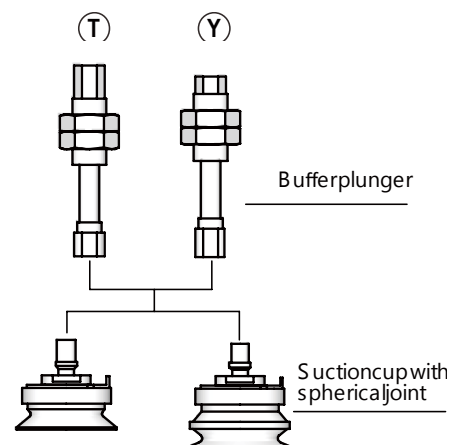
MP3E-YF 63 to 125 BM □-B12
(M12×1.75 female thread)



Model	Size[mm]			
	D	H	h	z
MP3E-YF63BM □-B12	68	90	35	12.5
MP3E-YF80BM □-B12	85	98	43	18
MP3E-YF100BM □-B12	106	107.5	52.5	22
MP3E-YF125BM □-B12	133	117	62	25

Structure

- The product consists of a suction cup and a buffer plunger
- The vacuum port in vertical direction is installed with a male threaded nut
- The vacuum port in horizontal direction is installed with a male threaded nut



Guide to purchase

MP3E - T F 32 UM N - JB 10

① ② ③ ④ ⑤ ⑥ ⑦ ⑧

① Product series	② Vacuum port direction	③ Joint type	④ Size specification
MP3E	T - Vertical Y - Horizontal	F - Swinging	32 - ϕ 32mm 80 - ϕ 80mm 40 - ϕ 40mm 100 - ϕ 100mm 50 - ϕ 50mm 125 - ϕ 125mm 63 - ϕ 63mm
⑤ Shape specification	⑥ Material of suction cup	⑦ Slewing mode	⑧ Buffering stroke
UM-Groovedflat BM-Groovedbellows-type	N - nitrile rubber S - siliconerubber	JB - Slewing, bushing-equipped	10 - 10mm 30 - 30mm 50 - 50mm

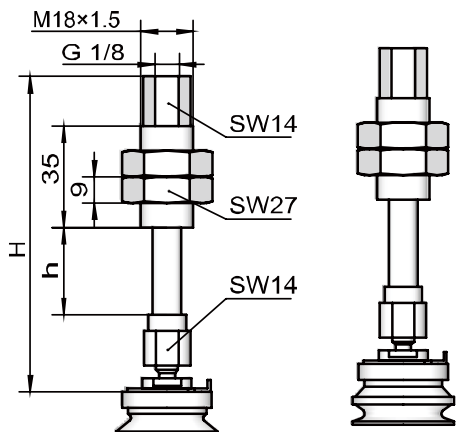
Model specifications

Model specification	Shape specification		Vacuum port direction		Buffering stroke mm		
	UM	BM	T- Vertical	Y- Horizontal	10	30	50
ϕ 32	●	●	●	●	●	●	●
ϕ 40	●	●	●	●	●	●	●
ϕ 50	●	●	●	●	●	●	●
ϕ 63	●	●	●	●	●	●	●
ϕ 80	●	●	●	●	●	●	●
ϕ 100	●	●	●	●	●	●	●
ϕ 125	●	●	●	●	●	●	●

Design parameters

MP3E-TF 32 to 50 □UM(BM)...

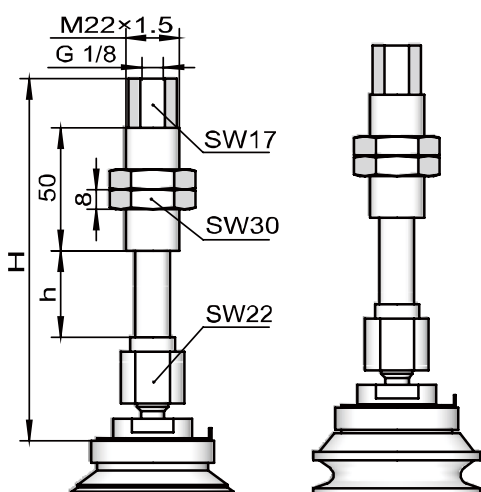
Vertically-slewing,
bushing-equipped



Model	Size [mm]		Applicable suction cup
	H	h	
MP3E-TF □UM(BM)□-JB10	108.5	10	32 40 50
MP3E-TF □UM(BM)□-JB30	133.5	30	32 40 50
MP3E-TF □UM(BM)□-JB50	153.5	50	32 40 50

MP3E-TF 63 to 125 □UM(BM)...

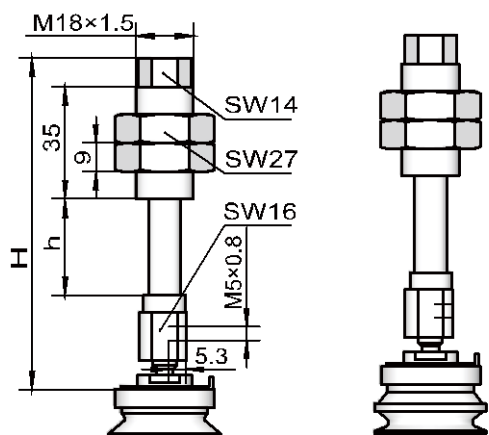
Vertically-slewing,
bushing-equipped



Model	Size [mm]		Applicable suction cup
	H	h	
MP3E-TF □UM(BM)□-JB10	147	10	63 80 100 125
MP3E-TF □UM(BM)□-JB30	172	30	63 80 100 125
MP3E-TF □UM(BM)□-JB50	192	50	63 80 100 125

MP3E-YF 32 to 50 □ UM(BM)...

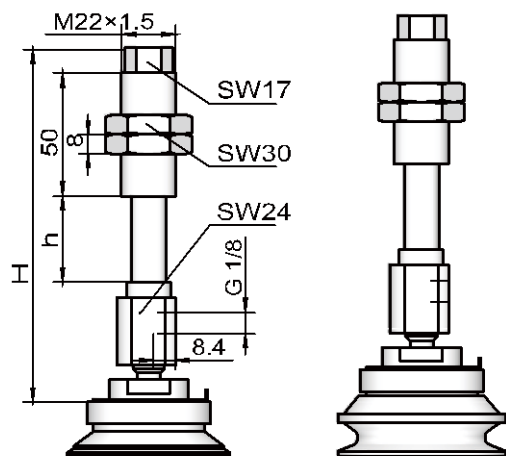
Vertically-slewing,
bushing-equipped



Model	Size [mm]		Applicable suction cup
	H	h	
MP3E-YF □ UM(BM) □ -JB10	103.5	10	32 40 50
MP3E-YF □ UM(BM) □ -JB30	128.5	30	32 40 50
MP3E-YF □ UM(BM) □ -JB50	148.5	50	32 40 50

MP3E-YF 63 to 125 □ UM(BM)...

Vertically-slewing,
bushing-equipped



Model	Size [mm]		Applicable suction cup
	H	h	
MP3E-YF □ UM(BM) □ -JB10	143.5	10	63 80 100 125
MP3E-YF □ UM(BM) □ -JB30	168.5	30	63 80 100 125
MP3E-YF □ UM(BM) □ -JB50	188.5	50	63 80 100 125