

MPK Flat suction cup for workpieces with rough surfaces

Size: 55–250mm

Material: EPDM



Sheetmetal



Glass



Wood

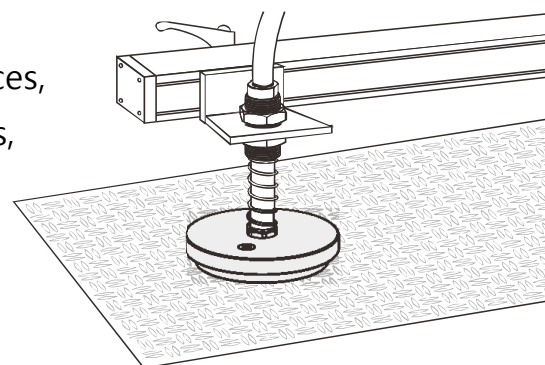


Introduction

- The sealing ring is made of soft rubber
- A large-area internal support structure
- Small internal volume
- With skid resistance to prevent permanent deformation of thin-walled workpieces
- Short operating cycle time
- Applicable to workpieces of different sizes and in different shapes

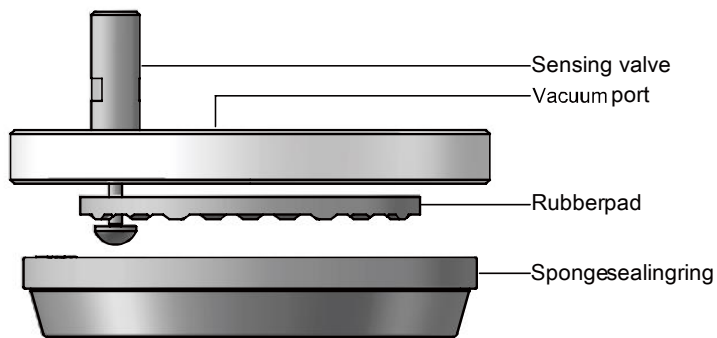
Application

- Handles various workpieces with uneven surfaces, such as embossed steel plates, decorative glass, rough slates, wood boards, etc.
- When detecting that the product is not in contact with the workpiece, the optional sensitive touch valve can turn off the vacuum chamber to prevent vacuum leakage



Structure

- Consists of an EPDM sealing ring and an aluminum holding plate
- The sealing ring is securely embedded in the holding plate
- Replaceable sealing ring
- The rubber pad under the holding plate protects the workpieces from being broken



purchase guide

MPK 110 G1/4-IG TV

- ① ② ③ ④

① Product series	② Size specification	③ Joint specification	④ Special specification
MPK	55 - φ55mm 80 - φ80mm 110 - φ110mm 160 - φ160mm 200 - φ200mm 250 - φ250mm Note: When 55 and 80 are selected, the touch valve option will be disabled.	G1/4-IG - G1/4 female thread G1/2-IG - G1/2 female thread Note: IG=Female thread	Null - Standard TV - Touch Sensing valve-equipped

Model specifications

Model	G1/4-IG	G1/2-IG
MPK 55...	●	-
MPK 80...	●	-
MPK 110...	-	●
MPK 160...	-	●
MPK 200...	-	●
MPK 250...	-	●

Model specifications of spare fittings and elements

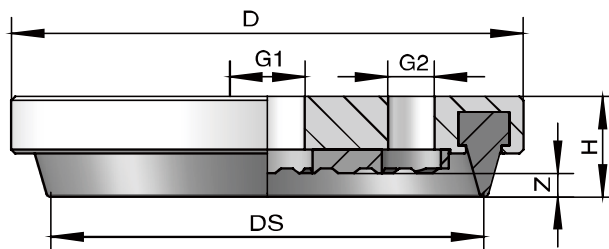
Model	Sealing Ring Model	Sensing valve model
MPK 55...	DR-MPK 55	-
MPK 80...	DR-MPK 80	-
MPK 110...	DR-MPK 110	MTV-G1/4-AG
MPK 160...	DR-MPK 160	MTV-G1/4-AG
MPK 200...	DR-MPK 200	MTV-G1/2-AG
MPK 250...	DR-MPK 250	MTV-G1/2-AG

Technical parameters

Model	Suction force Ds N	Internal Volume cm ³	Minimum radius of curvature of workpiece mm (convex)	Weight g
MPK 55 G1/4-IG(TV)	121	15	250	110
MPK 80 G1/4-IG(TV)	256	32	300	240
MPK 110 G1/2-IG(TV)	471	67	-	430
MPK 160 G1/2-IG(TV)	1060	128	-	975
MPK 200 G1/2-IG(TV)	1700	198	-	1675
MPK 250 G1/2-IG(TV)	2714	305	-	2330

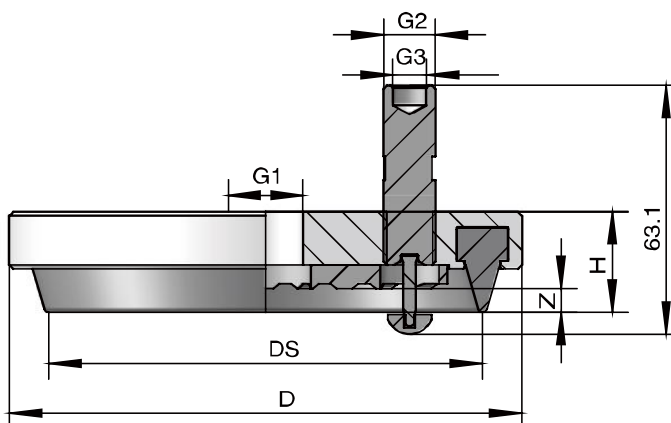
Design parameters

MPK 55 至 250...



Model	Size (mm)						
	D	DS	H	G1	G2	Z	
MPK 55 G1/4-IG	70	55	22	G1/4	-	4	
MPK 80 G1/4-IG	95.2	80	22	G1/4	-	4	
MPK 110 G1/2-IG	130	110	25.5	G1/2	G1/4	6	
MPK 160 G1/2-IG	179	159	25.5	G1/2	G1/4	6	
MPK 200 G1/2-IG	219	199	25.5	G1/2	G1/2	6	
MPK 250 G1/2-IG	269	249	25.5	G1/2	G1/2	6	

MPK 110 至 250...TV



Model	Size (mm)						
	D	DS	H	G1	G2	G3	Z
MPK 110 G1/2-IG TV	130	110	25.5	G1/2	G1/4	G1/8	6
MPK 160 G1/2-IG TV	179	159	25.5	G1/2	G1/4	G1/8	6
MPK 200 G1/2-IG TV	219	199	25.5	G1/2	G1/2	G3/8	6
MPK 250 G1/2-IG TV	269	249	25.5	G1/2	G1/2	G3/8	6