

MXD Flat suction cup for plastic film and paper

Size:15-40mm

Material:HT1、S



Paper



Plasticbag



Glass



Solar energy



Composite material



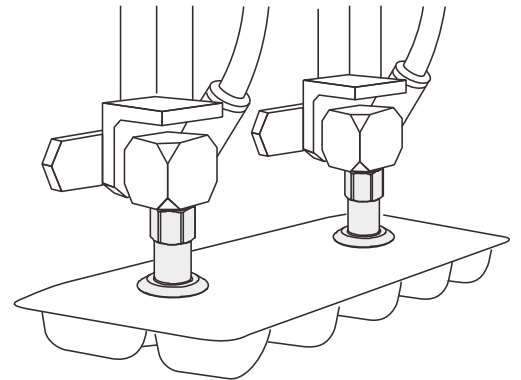
Anti-deformation

Introduction

- Ultra-thin lip seal
- Optional high-temperature traceless material
- Applicable to film, paper and solar panels
- Prevent workpiece suctioned into the suction cup
- Traceless suction, and even high-temperature traceless suction
- Can prevent paper and film suctioned from being wrinkled
- With resistance to high temperature, ozone and UV radiation, it is suitable for handling in the paper and printing industry

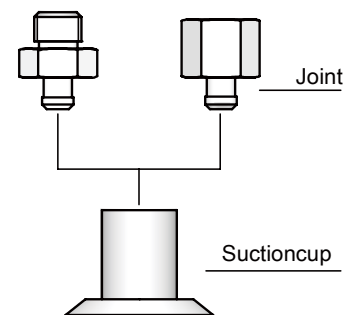
Application

- Handles various packaging materials, e.g. paper, plastic film, plastic bag opening, etc.
- Handles fragile workpieces such as wood sheets, solar silicon wafers and solar cells



Structure

The joint is designed to be detachable from the suction cup so that the vulnerable elements can be easily replaced



purchase guide

MXD 15 SI M5-AG

① ② ③ ④

① Product series	② Size specification	③ Material and Shore hardness	④ Joint specification
MXD	15 - φ15mm 20 - φ20mm 24 - φ24mm 30 - φ30mm 34 - φ34mm 40 - φ40mm	HT1 - High temperature resistant SI - Silicone rubber	Null —Bare suction cup M5-AG - M5 male thread G1/8-AG - G1/8 male thread G1/8-IG - G1/8 female thread G1/4-AG - G1/4 male thread G1/4-IG - G1/4 female thread Note:AG=MalethreadIG=Femalethread

Model specifications

Model specification	M5-AG	G1/8-AG	G1/8-IG	G1/4-AG	G1/4-IG
MXD 15...	●	●	●	-	-
MXD 20...	●	●	●	-	-
MXD 24...	●	●	●	-	-
MXD 30...	-	-	-	●	●
MXD 34...	-	-	-	●	●
MXD 40...	-	●	-	●	●

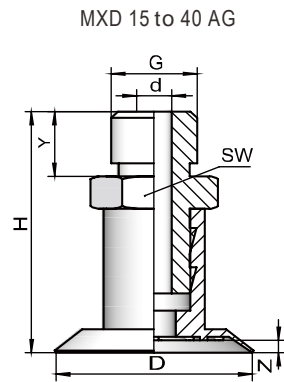
fitting model specifications

Fitting Name	Model Specification		
	AG-Male thread	IG-Female thread	
Suction cup joint	S016 M5-AG	S016 G1/8-IG	MXD 15、20、24
	S016 G1/8-AG	S016 G1/8-IG	MXD 15、20、24
	S033 G1/4-AG	S033 G1/4-IG	MXD 30、34
	S035 G1/8-AG		MXD 40
	S035 G1/4-AG	S035 G1/4-IG	MXD 40

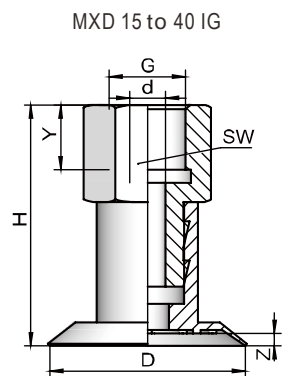
Technical parameters

Model	Suction force N	Internal Volume cm ³	Weight g
MXD 15...	5.5	0.12	0.6
MXD 20...	8.5	0.31	1.0
MXD 24...	11.0	0.70	1.1
MXD 30...	19.0	1.50	3.2
MXD 34...	25.0	2.10	3.3
MXD 40...	33.0	2.90	5.3

Design parameters

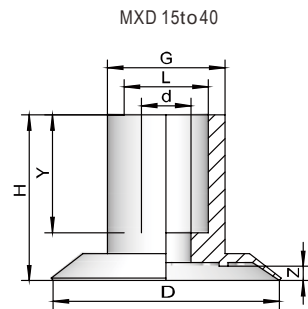


Model	Size (mm)							G
	D	d	H	Y	Z	SW		
MXD 15 M5-AG	14.5	2.5	20.0	5	0.9	7	M5-AG	
MXD 15 G1/8-AG	14.5	3.5	23.5	7.5	0.9	14	G1/8-AG	
MXD 20 M5-AG	20.9	2.5	20.4	5	1.5	7	M5-AG	
MXD 20 G1/8-AG	20.9	3.5	23.9	7.5	1.5	14	G1/8-AG	
MXD 24 M5-AG	24.4	2.5	20.8	5	1.7	7	M5-AG	
MXD 24 G1/8-AG	24.4	3.5	24.3	7.5	1.7	14	G1/8-AG	
MXD 30 G1/4-AG	30.6	5.5	37.2	10	2.0	17	G1/8-AG	
MXD 34 G1/4-AG	34.5	5.5	38.0	10	1.4	17	G1/8-AG	
MXD 40G1/8-AG	40.5	5.0	34.6	9	2.3	17	G1/8-AG	
MXD 40G1/4-AG	40.5	5.5	35.6	10	2.3	17	G1/4-AG	



Model	Size (mm)							G
	D	d	H	Y	Z	SW		
MXD 15 G1/8-IG	14.5	3.5	22.0	8	0.9	14	G1/8-IG	
MXD 20 G1/8-IG	20.9	3.5	22.4	8	1.5	14	G1/8-IG	
MXD 24 G1/8-IG	24.4	3.5	22.8	8	1.7	14	G1/8-IG	
MXD 30 G1/4-IG	30.6	5.5	37.2	12	2.0	17	G1/8-IG	
MXD 34 G1/4-IG	34.5	5.5	38.0	12	1.4	17	G1/8-IG	
MXD 40G1/4-IG	40.5	5.5	35.6	12	2.3	17	G1/4-IG	

pad design parameters



Model	Size (mm)							Z
	D	d	H	Y	L	G		
MXD 15	14.5	3.5	10	7.2	4.5	9	0.9	
MXD 20	20.9	3.5	10.4	7.1	4.5	10.5	1.5	
MXD 24	24.4	3.5	10.8	7.3	4.5	10	1.7	
MXD 30	30.6	6.6	22.2	15.7	11.2	15.6	2.0	
MXD 34	34.5	5.8	23	16.8	11.2	14.8	1.4	
MXD 40	40.5	5.0	20.6	14.5	8	16	2.3	