



## PFG round flat suction cup

Size:2-120mm

Material:F、HT1、N、GN、S、GS



Universa

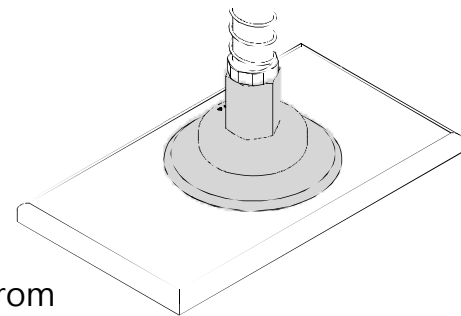


### Introduction

- Handles flat plates with smooth or slightly rough surfaces
- Handles high-temperature workpieces (HT1, S)
- Almost traceless and static-proof handling of workpieces sensitive to pressure (HT1, GN and GS series)

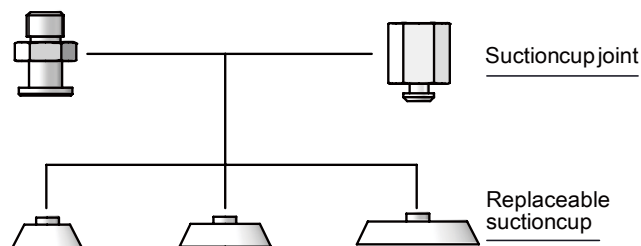
### Application

- Applicable to flat plates with smooth or slightly rough surfaces, such as smooth wood boards, smooth steel plates, plastic plates, plywood boards, etc.
- Applicable to handling electronic elements where the anti-static material can effectively prevent static from damaging electronic products



### Structure

- Diameter 50mm and below: joint plugged in on cups
- Diameter of 60mm or more: The mounting plate and the suction cup pad are bonded together by vulcanization. The joint screws in directly through thread



purchase guide

**PFG 2 N M3-AG**

- ① ② ③ ④

① Product series	② Size specification	③ Material	④ Joint specification	
PFG	2 - φ2mm 3.5 - φ3.5mm 5 - φ5mm 6 - φ6mm 8 - φ8mm 10 - φ10mm 15 - φ15mm 20 - φ20mm 25 - φ25mm	30 - φ30mm 35 - φ35mm 40 - φ40mm 50 - φ50mm 60 - φ60mm 80 - φ80mm 95 - φ95mm 120 - φ120mm	F - fluorine rubber HT1 - High temperature resistant traceless material N - nitrile rubber GN - static-proof nitrile rubber (Static resistance index: 10 <sup>5</sup> -10 <sup>9</sup> ) S - silicone rubber GS - static-proof silicone rubber (Static resistance index: 10 <sup>5</sup> -10 <sup>9</sup> )	Null—Bare suction cup M3-AG - M3 male thread M5-AG - M5 male thread M5-IG - M5 female thread G1/8-AG - G1/8 male thread G1/8-IG - G1/8 Female thread G1/4-AG - G1/4 male thread G1/4-IG - G1/4 Female thread G1/2-IG - G1/2 Female thread

Note: AG=Male thread IG=Female thread

joint model specifications

Model specification	M3-AG	M5-AG	M5-IG	G1/8-AG	G1/8-IG	G1/4-AG	G1/4-IG	G1/2-IG
PFG 2	●	-	-	-	-	-	-	-
PFG 3.5	●	-	-	-	-	-	-	-
PFG 5	-	●	●	-	-	-	-	-
PFG 6	-	●	●	-	-	-	-	-
PFG 8	-	●	●	-	-	-	-	-
PFG 10	-	●	●	●	●	-	-	-
PFG 15	-	-	-	●	●	-	-	-
PFG 20	-	-	-	●	●	-	-	-
PFG 25	-	-	-	●	●	-	-	-
PFG 30	-	-	-	●	●	-	-	-
PFG 35	-	-	-	●	●	-	-	-
PFG 40	-	-	-	●	●	-	-	-
PFG 50	-	-	-	●	●	-	-	-
PFG 60	-	-	-	-	-	●	●	-
PFG 80	-	-	-	-	-	●	●	-
PFG 95	-	-	-	-	-	●	●	-
PFG 120	-	-	-	-	-	-	-	●

fittings' model specifications

Fitting Name	Model Specification		Applicable Suction Cup
	AG - Male thread	IG - Female thread	
Suction cup joint	S003 M3-AG		PFG 2 PFG 3.5
	S004 M5-AG	S004 M5-IG	PFG 5 PFG 6 PFG 8 PFG 10
	S004 G1/8-AG	S004 G1/8-IG	PFG 10
	S005 G1/8-AG	S005 G1/8-IG	PFG 15
	S006 G1/8-AG	S006 G1/8-IG	PFG 20
	S007 G1/8-AG	S007 G1/8-IG	PFG 25 PFG 30 PFG 35 PFG 40
	S008 G1/8-AG	S008 G1/8-IG	PFG 50
	S009 G1/4-AG	S009 G1/4-IG	PFG 60 PFG 80 PFG 95
		S010 G1/2-IG	PFG 120

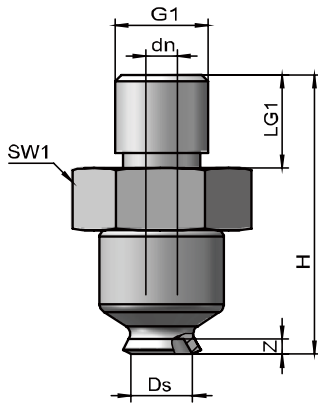


Technical parameters

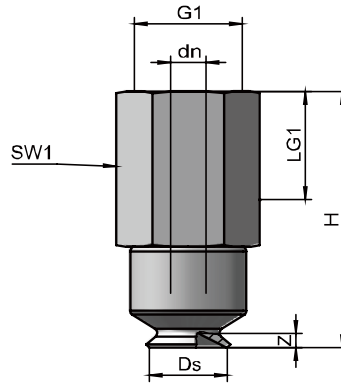
Model	Suction force N	Internal Volume cm <sup>3</sup>	Minimum radius of curvature of workpiece mm (convex)	Weight g
PFG 2	0.12	0.001	2	0.12
PFG 3.5	0.42	0.002	8	0.21
PFG 5	0.75	0.005	8	0.3
PFG 6	1.20	0.008	8	0.36
PFG 8	2.30	0.030	10	0.48
PFG 10	4.00	0.070	13	0.6
PFG 15	9.00	0.400	13	0.9
PFG 20	15.50	0.800	20	1.6
PFG 25	26.50	1.300	25	2.8
PFG 30	34.00	1.300	40	3.4
PFG 35	44.00	2.700	50	4.4
PFG 40	57.70	3.800	50	5.7
PFG 50	91.00	7.000	75	7.3
PFG 60	125.00	10.000	100	46.7
PFG 80	260.00	25.000	150	62
PFG 95	350.00	35.000	200	70
PFG 120	540.00	77.800	300	146.2

Design parameters

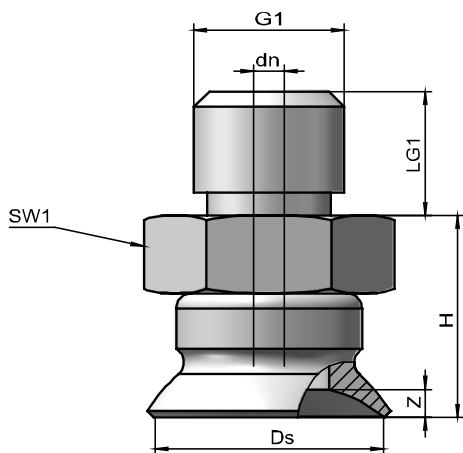
PFG 2 to 10 AG



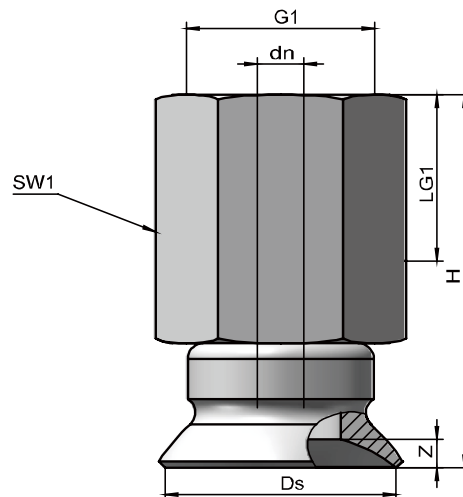
PFG 5 to 10 IG



PFG 15 to 50 AG

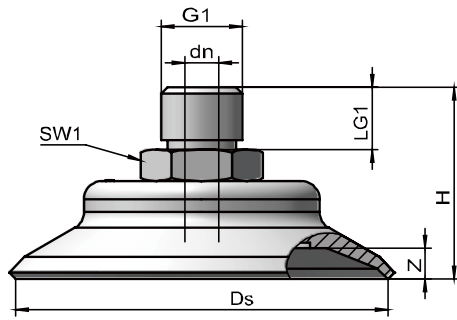


PFG 15 to 50 IG

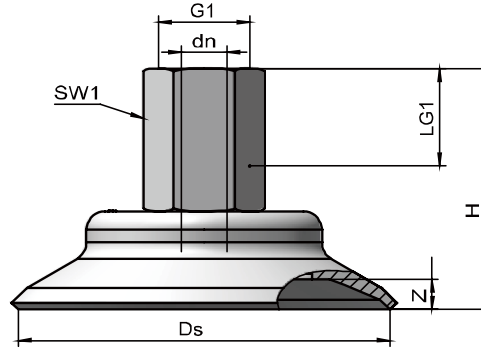




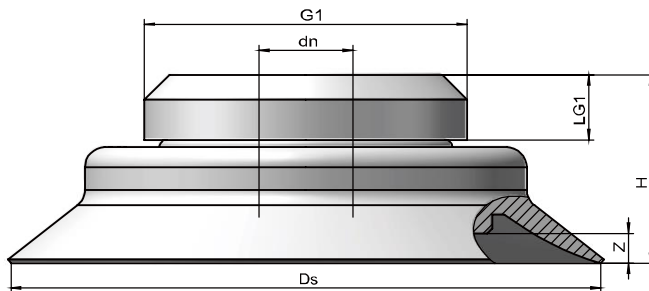
PFG 60 to 95 AG



PFG 60 to 95 IG



PFG 120 IG

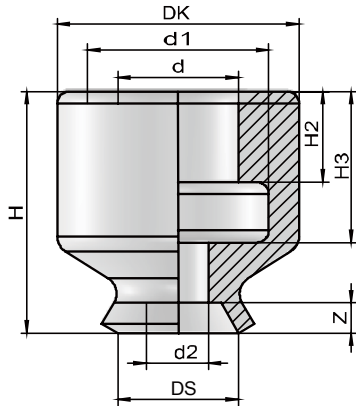


Model	Size (mm)							
	dn	Ds	G1	H	LG1	SW1	Z (stoke)	
PFG 2 M3-AG	1.0	2.0	M3-AG	6.0	3.0	5	0.5	
PFG 3.5 M3-AG	1.0	3.5	M3-AG	6.0	3.0	5	0.5	
PFG 5 M5-AG	2.0	5.0	M5-AG	11.5	4.5	8	0.9	
PFG 5 M5-IG	2.0	5.0	M5-IG	16.5	5.5	8	0.9	
PFG 6 M5-AG	2.0	6.0	M5-AG	11.5	4.5	8	1.0	
PFG 6 M5-IG	2.0	6.0	M5-IG	16.5	5.5	8	1.0	
PFG 8 M5-AG	2.0	8.0	M5-AG	12.0	4.5	8	1.4	
PFG 8 M5-IG	2.0	8.0	M5-IG	17.0	5.5	8	1.4	
PFG 10 M5-AG	2.0	10.0	M5-AG	12.5	4.5	8	1.3	
PFG 10 M5-IG	2.0	10.0	M5-IG	17.5	5.5	8	1.3	
PFG 10 G1/8-AG	2.0	10.0	G1/8"-AG	12.5	8.0	14	1.3	
PFG 10 G1/8-IG	2.0	10.0	G1/8"-IG	23.5	9.0	14	1.3	
PFG 15 G1/8-AG	2.0	15.0	G1/8"-AG	13.0	8.0	14	1.9	
PFG 15 G1/8-IG	2.0	15.0	G1/8"-IG	24.0	9.0	14	1.9	
PFG 20 G1/8-AG	2.0	20.0	G1/8"-AG	15.0	8.0	14	2.3	
PFG 20 G1/8-IG	2.0	20.0	G1/8"-IG	26.0	9.0	14	2.3	
PFG 25 G1/8-AG	2.4	25.0	G1/8"-AG	19.0	8.0	14	3.0	
PFG 25 G1/8-IG	2.4	25.0	G1/8"-IG	30.0	9.0	14	3.0	
PFG 30 G1/8-AG	2.4	28.8	G1/8"-AG	17.0	8.0	14	2.0	
PFG 30 G1/8-IG	2.4	28.8	G1/8"-IG	28.0	9.0	14	2.0	
PFG 35 G1/8-AG	2.4	35.0	G1/8"-AG	19.0	8.0	14	3.0	
PFG 35 G1/8-IG	2.4	35.0	G1/8"-IG	30.0	9.0	14	3.0	
PFG 40 G1/8-AG	2.4	40.0	G1/8"-AG	19.0	8.0	14	3.5	
PFG 40 G1/8-IG	2.4	40.0	G1/8"-IG	30.0	9.0	14	3.5	
PFG 50 G1/8-AG	2.4	50.0	G1/8"-AG	20.0	8.0	14	4.0	
PFG 50 G1/8-IG	2.4	50.0	G1/8"-IG	31.0	9.0	14	4.0	
PFG 60 G1/4-AG	5.5	60.0	G1/4"-AG	23.0	10.0	17	5.0	
PFG 60 G1/4-IG	5.5	60.0	G1/4"-IG	39.0	11.0	17	5.0	
PFG 80 G1/4-AG	5.5	80.0	G1/4"-AG	25.0	10.0	17	6.0	
PFG 80 G1/4-IG	5.5	80.0	G1/4"-IG	41.0	11.0	17	6.0	
PFG 95 G1/4-AG	5.5	95.0	G1/4"-AG	25.5	10.0	17	6.0	
PFG 95 G1/4-IG	5.5	95.0	G1/4"-IG	41.5	11.0	17	6.0	
PFG 120 G1/2-IG	13.5	120.0	G1/2"-IG	36.5	13.0	-	6.0	

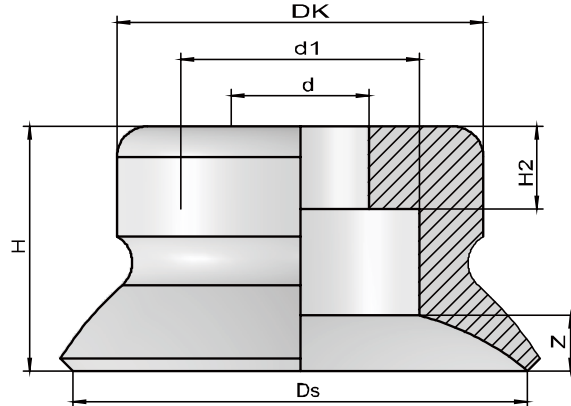


## Design parameters of parts

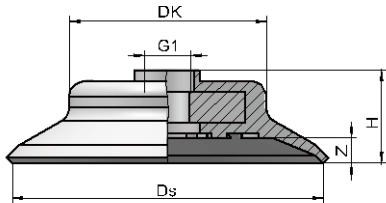
PFG 2 to 10



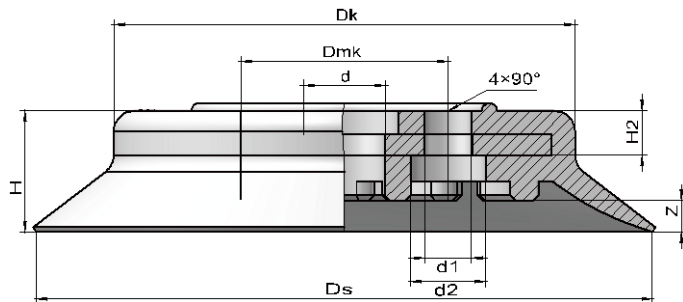
PFG 15 to 50



PFG 60 to 95



PFG 120



Model	Size (mm)											
	d	d1	d2	DK	Dmk	Ds	G1	H	H2	H3	Z (stoke)	
PFG 2	2.0	3.0	1.0	4.0	-	2.0	-	4.0	1.5	2.5	0.5	
PFG 3.5	2.0	3.0	1.0	4.0	-	3.5	-	4.0	1.5	2.5	0.5	
PFG 5	4.0	6.0	1.5	7.5	-	5.0	-	6.5	2.0	4.0	0.9	
PFG 6	4.0	6.0	2.0	7.5	-	6.0	-	6.5	2.0	4.0	1.0	
PFG 8	4.0	6.0	2.0	8.0	-	8.0	-	7.0	2.0	4.0	1.4	
PFG 10	4.0	6.0	2.0	8.5	-	10.0	-	7.5	2.6	4.0	1.3	
PFG 15	4.5	7.8	-	12.0	-	15.0	-	8.0	4.5	-	1.9	
PFG 20	4.5	11.0	-	15.0	-	20.0	-	10.0	7.0	-	2.3	
PFG 25	6.0	11.0	-	16.0	-	25.0	-	14.0	7.0	-	3.0	
PFG 30	6.0	11.0	-	14.5	-	28.8	-	12.0	7.0	-	2.0	
PFG 35	6.0	11.0	-	20.5	-	35.0	-	14.0	7.0	-	3.0	
PFG 40	6.0	11.0	-	24.0	-	40.0	-	14.0	7.2	-	3.5	
PFG 50	8.0	20.0	-	28.5	-	50.0	-	15.0	-	-	4.0	
PFG 60	-	-	-	38.5	-	60.0	M10x1.25-IG	18.0	-	-	5.0	
PFG 80	-	-	-	52.0	-	80.0	M10x1.25-IG	18.0	-	-	6.0	
PFG 95	-	-	-	68.0	-	95.0	M10x1.25-IG	19.0	-	-	6.0	
PFG 120	13.5	7.0	14.5	90.0	40	120.0	-	23.5	8.5	-	6.0	