

ZL112

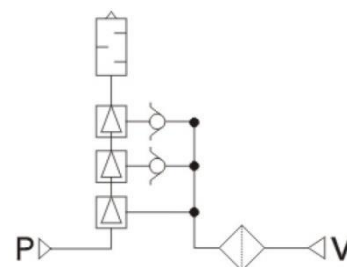
vacuum Pumps/Generator

Multistage



Features

- Utilizes a 3-stage booster, increasing vacuum flow by 250% and saving 20% on flow consumption.
- Can be equipped with a valve, vacuum pressure gauge, or pressure switch.
- Replaceable filter element.
- Built-in vacuum filter and silencer.
- Can be installed in three directions (top, bottom, side).



Specifications

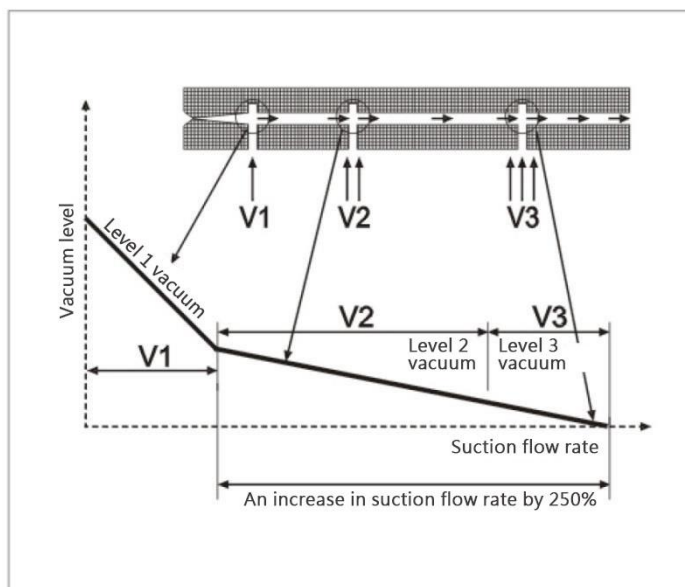
Nozzle Diameter	Ø1.2mm
Maximum Vacuum Flow Rate	100l/min
Air Consumption Rate	63l/min
Highest Vacuum Level	-84kPa
Maximum Operating Pressure	7bar
Supply Pressure Range	2~5bar
Standard Supply Pressure	4bar
Operating Temperature Range	5~50°C

Supply Valve / Relief Valve Specifications

Model	SYJ514- □ □ □
Functions	Internally Piloted Normally Closed (N.C.)
Operating Pressure Range	2~5bar
Environmental and Fluid Temperature	5~50°C
Response Time (at 0.5 MPa)	Less than 25 ms
Maximum Operating Frequency	5Hz
Manual Operation	Non-locking push-to-press, push-to-rotate locking screwdriver operation
Pilot exhaust method	Individual exhaust type · Centralized exhaust type
Oil lubrication	No oil required
Installation posture	Freedom
Shock-resistant/ Vibration-resistant	150/30m/s ²
Protective structure	Dustproof

Energy-saving

Level 3 booster tube design



Order Code

ZL1 12 □ K1 5 L Z □ - GN RL5
 ① ② ③ ④ ⑤ ⑥ ⑦ ⑧ ⑨

① Nozzle diamete 12 : Ø1.2mm

② Exhaust specifications

unstamped	built-in silencer
-----------	-------------------

③ Combination of supply valve and relief valve

K1	Includes supply valve and rupture valve
K2	with a supply valve

④ Rated voltage

DC		AC	
5	24V	1	100V
6	12V	2	200V
V	6V	3	110V
S	5V	4	220V
R	3V		

⑤ Wire lead-out method

G	direct output	Wire length 0.3m
L	plug-in type	Wire length 0.3m

⑥ Indicator light overvoltage protection circuit

Z	with indicator light and overvoltage protection circuit
---	---

⑦ Manual operation

D	Push-down, twist-lock screw operation
---	---------------------------------------

⑧ Vacuum pressure detection section

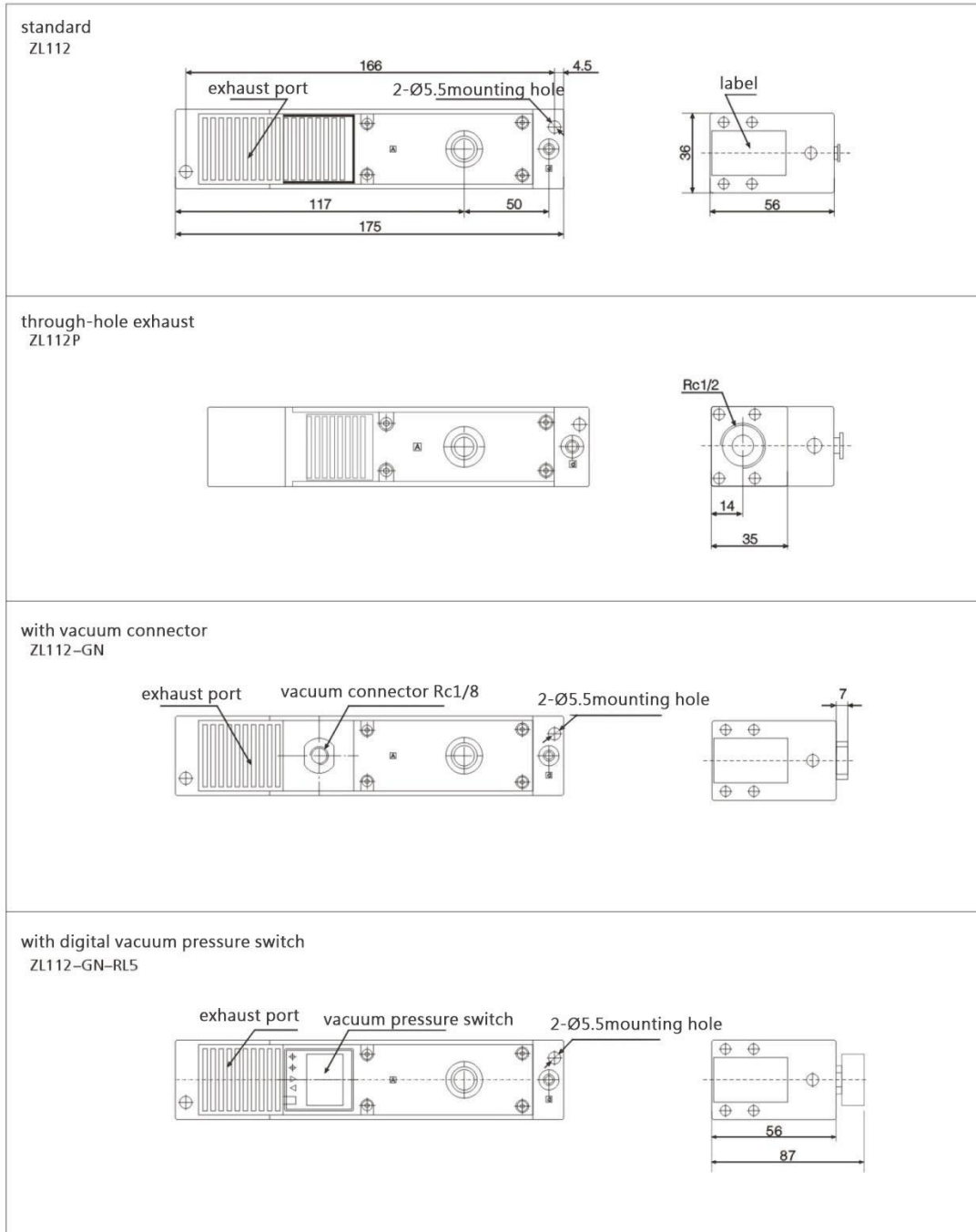
unstamped	none
GN	vacuum connector Rc1/8

⑨ Specifications for digital vacuum pressure switches for vacuum applications

RL5

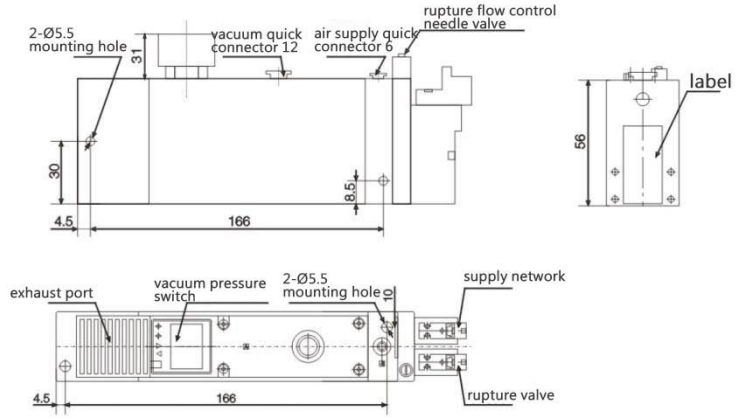
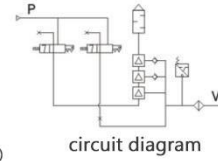
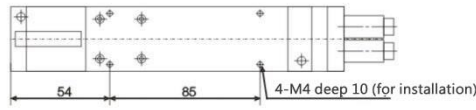
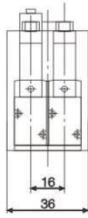
RL5C(-100~100kPa)		
RL5C-02	NPN output	Wire length 2m
RL5C-04	PNP output	
RL5V(0~100kPa)		
RL5V-02	NPN output	Wire length 2m
RL5V-04	PNP output	

Dimensions

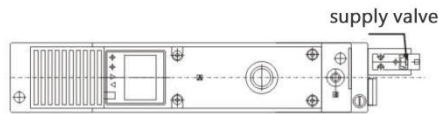
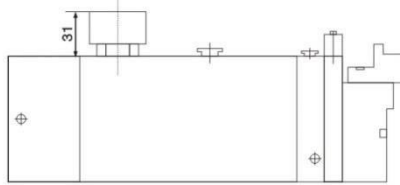
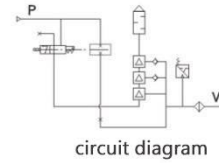
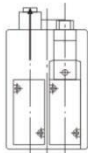




Includes supply valve and rupture valve
ZL112-K1□□□-GN-RL5



valve with supply
ZL112-K2□□□-GN-RL5



ZL112

■ Vacuum flow rates (l/min) at different vacuum levels (-kPa)

supply air pressure bar	air consumption l/min	Vacuum flow rates (l/min) at different vacuum levels (-kPa)										maximum vacuum level -kPa
		0	10	20	30	40	50	60	70	80		
4	63	100	65	26	20	18.5	13	8	5	2.8	84	

■ Evacuation time (s/l) at different vacuum levels (-kPa)

supply air pressure bar	air consumption l/min	Evacuation time (s/l) at different vacuum levels (-kPa)									maximum vacuum level -kPa
		10	20	30	40	50	60	70	80		
4	63	0.05	0.172	0.4	0.67	1.07	1.63	2.46	3.9	84	

